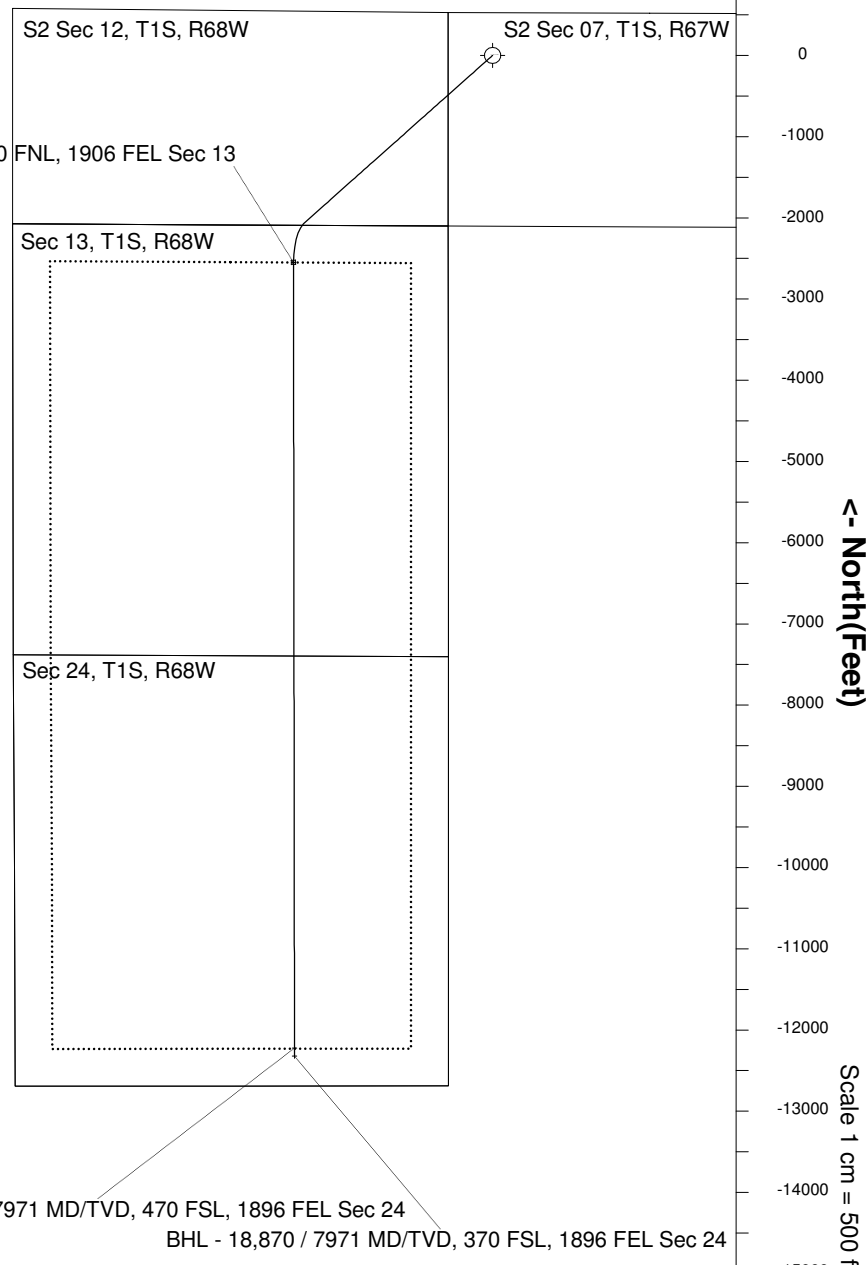
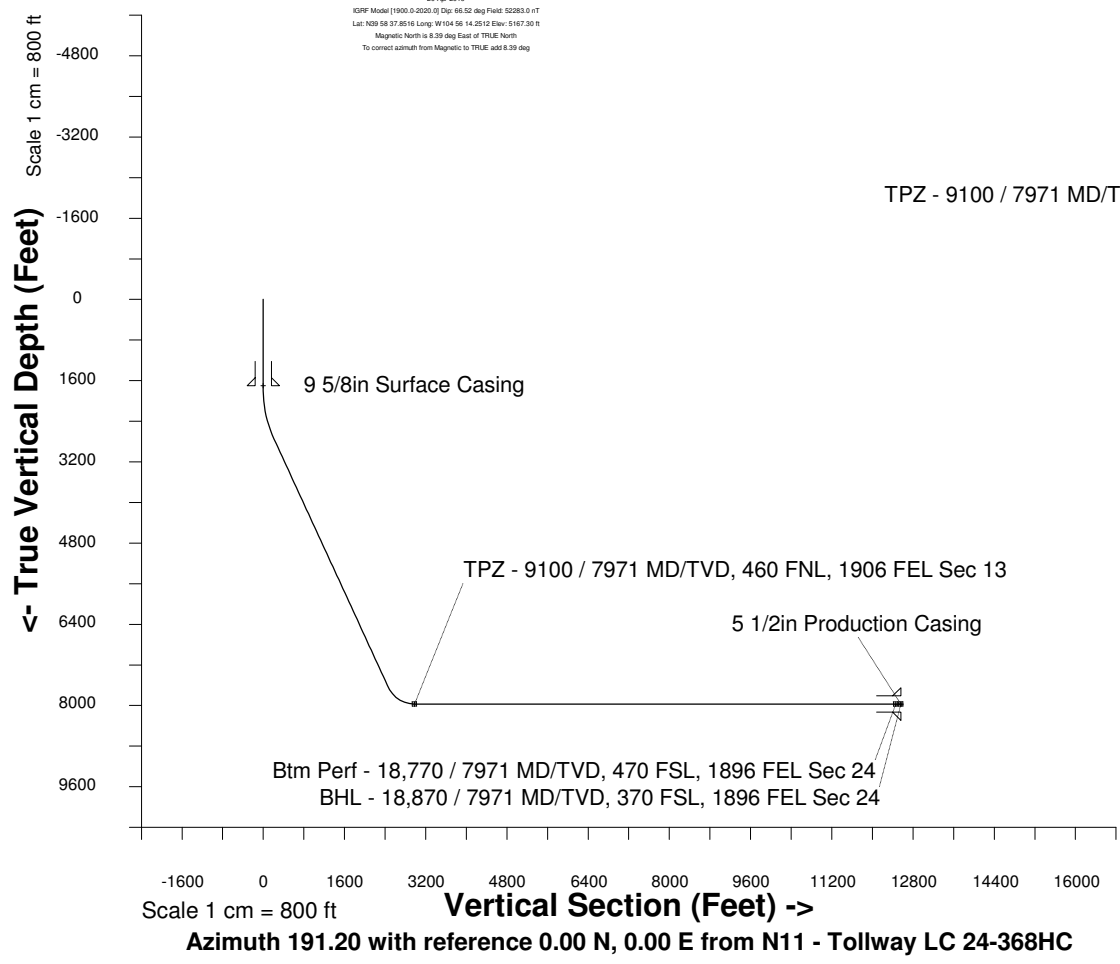
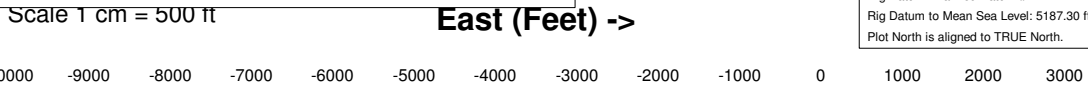
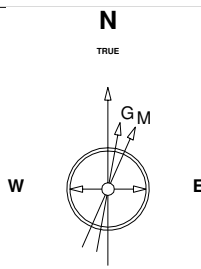


Great Western Operating Company, LLC

Location Colorado **Slot** N11 - Tollway LC 24-368HC
Field Wattenburg **Well** Tollway LC 24-368HC
Installation Tollway **Wellbore** Tollway LC 24-368HC (PWB)

Created by admin
 Date plotted 17-Jan-2018
 Plot reference is Tollway LC 24-368HC (PWB).
 Ref wellpath is Tollway LC 24-368HC (PWP#1).
 Coordinates are in Feet reference N11 - Tollway LC 24-368HC.
 True Vertical Depths are reference Rig Datum.
 Measured Depths are reference Rig Datum.
 Rig Datum: Planned Datum #1
 Rig Datum to Mean Sea Level: 5187.30 ft.
 Plot North is aligned to TRUE North.



WELL PROFILE DATA

Point	MD	Inc	Azi	TVD	North	East	deg/100ft	V. Sect
Tie on	0.00	0.00	0.00	0.00	S 0.00	W 0.00		-0.00
KOP	1775.00	0.00	228.34	1775.00	S 0.00	W 0.00	0.00	-0.00
End of Build	2775.04	30.00	228.34	2729.97	S 170.11	W 191.17	9.84	203.99
End of Hold	8458.05	30.00	228.34	7651.53	S 2059.09	W 2314.03	0.00	2469.28
Target TPZ - ...Sec 13	9100.00	90.00	179.93	7971.00	S 2550.61	W 2451.36	36.09	2978.10
Target Btm Pe...Sec 24	18769.95	90.00	179.93	7971.00	S 12220.55	W 2439.13	0.00	12461.57
End of Turn	18770.66	90.00	180.01	7971.00	S 12221.26	W 2439.13	36.09	12462.27
T.D. & Target BHL... 24	18870.13	90.00	180.01	7971.00	S 12320.72	W 2439.14	0.00	12559.84