

# Great Western Operating Company, LLC

**Location** Colorado  
**Field** Wattenburg  
**Installation** Tollway  
**Slot** N09 - Tollway LC 24-366HN  
**Well** Tollway LC 24-366HN  
**Wellbore** Tollway LC 24-366HN (PWB)

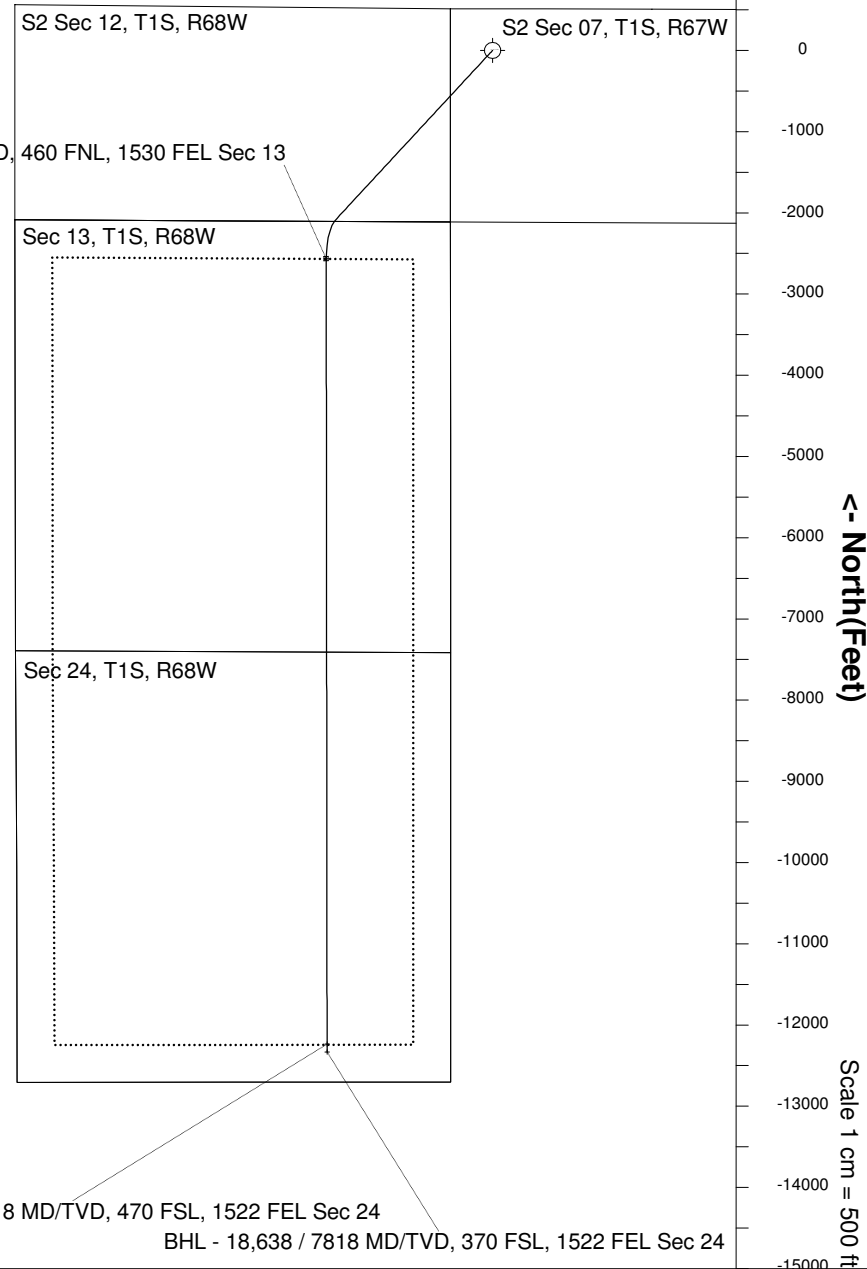
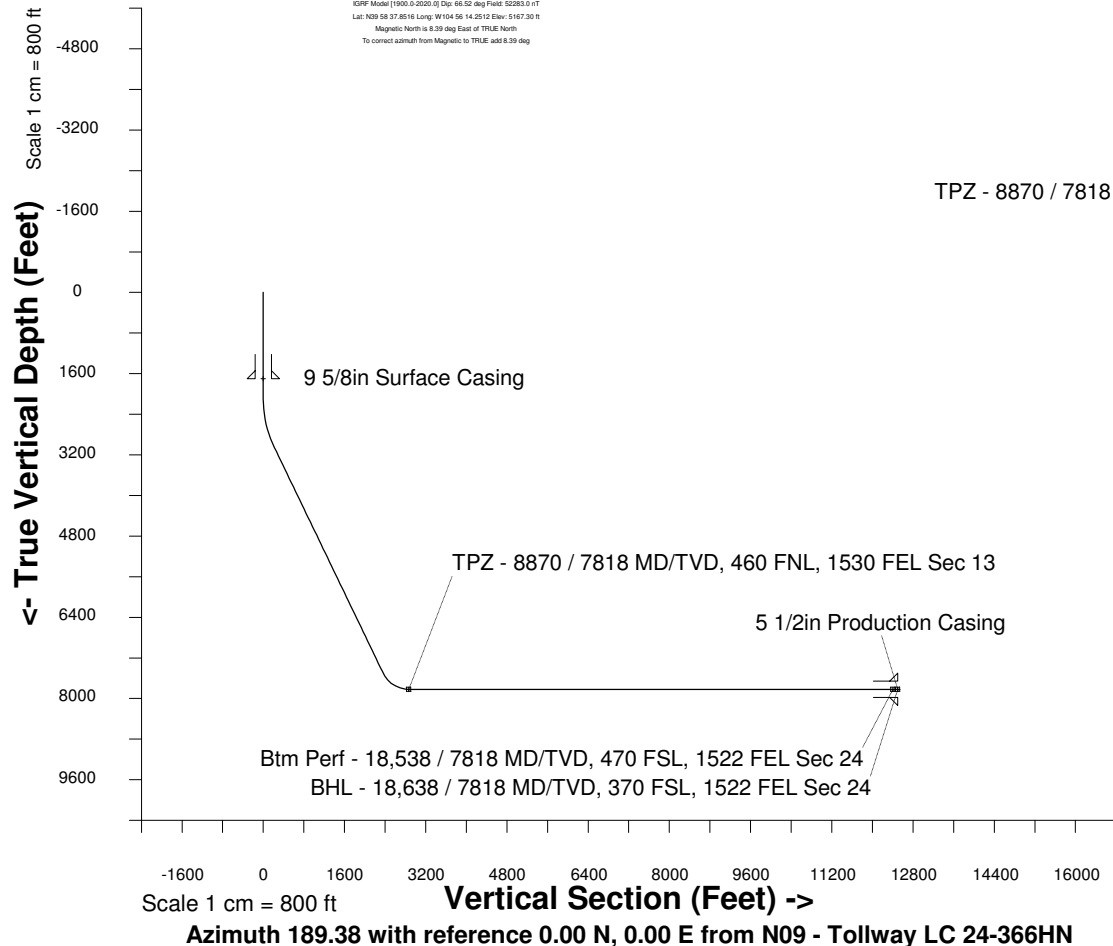
Created by admin  
Date plotted 17-Jan-2018  
Plot reference is Tollway LC 24-366HN (PWB).  
Ref wellpath is Tollway LC 24-366HN (PWP#1).  
Coordinates are in Feet reference N09 - Tollway LC 24-366HN.  
True Vertical Depths are reference Rig Datum.  
Measured Depths are reference Rig Datum.  
Rig Datum: Planned Datum #1  
Rig Datum to Mean Sea Level: 5187.30 ft.  
Plot North is aligned to TRUE North.

Scale 1 cm = 500 ft

East (Feet) ->

-10000 -9000 -8000 -7000 -6000 -5000 -4000 -3000 -2000 -1000 0 1000 2000 3000

20-Apr-2016  
KOPF Model [1900.0-2020.0] Dip: 66.52 deg Field: 52283.0 nT  
Lat: N09 58 37.8516 Long: W104 56 14.2512 Elev: 5167.30 ft  
Magnetic North is 6.39 deg East of TRUE North  
To correct azimuth from Magnetic to TRUE, add 6.39 deg



## WELL PROFILE DATA

Point	MD	Inc	Azi	TVD	North	East	deg/100ft	V. Sect
Tie on	0.00	0.00	0.00	0.00	S 0.00	W 0.00		-0.00
KOP	2086.00	0.00	222.82	2086.00	S 0.00	W 0.00	0.00	-0.00
End of Build	3086.07	30.00	222.82	3040.99	S 187.71	W 173.94	9.84	213.56
End of Hold	8247.53	30.00	222.82	7510.84	S 2080.81	W 1928.14	0.00	2367.34
Target TPZ - ...Sec 13	8870.30	90.00	179.94	7818.00	S 2565.58	W 2048.31	36.09	2865.21
Target Btm Pe...Sec 24	18538.06	90.00	179.94	7818.00	S 12233.33	W 2038.17	0.00	12401.95
End of Turn	18538.65	90.00	180.00	7818.00	S 12233.92	W 2038.17	36.09	12402.53
T.D. & Target BHL... 24	18638.24	90.00	180.00	7818.00	S 12333.51	W 2038.18	0.00	12500.79

Btm Perf - 18,538 / 7818 MD/TVD, 470 FSL, 1522 FEL Sec 24  
BHL - 18,638 / 7818 MD/TVD, 370 FSL, 1522 FEL Sec 24