

Great Western Operating Company, LLC

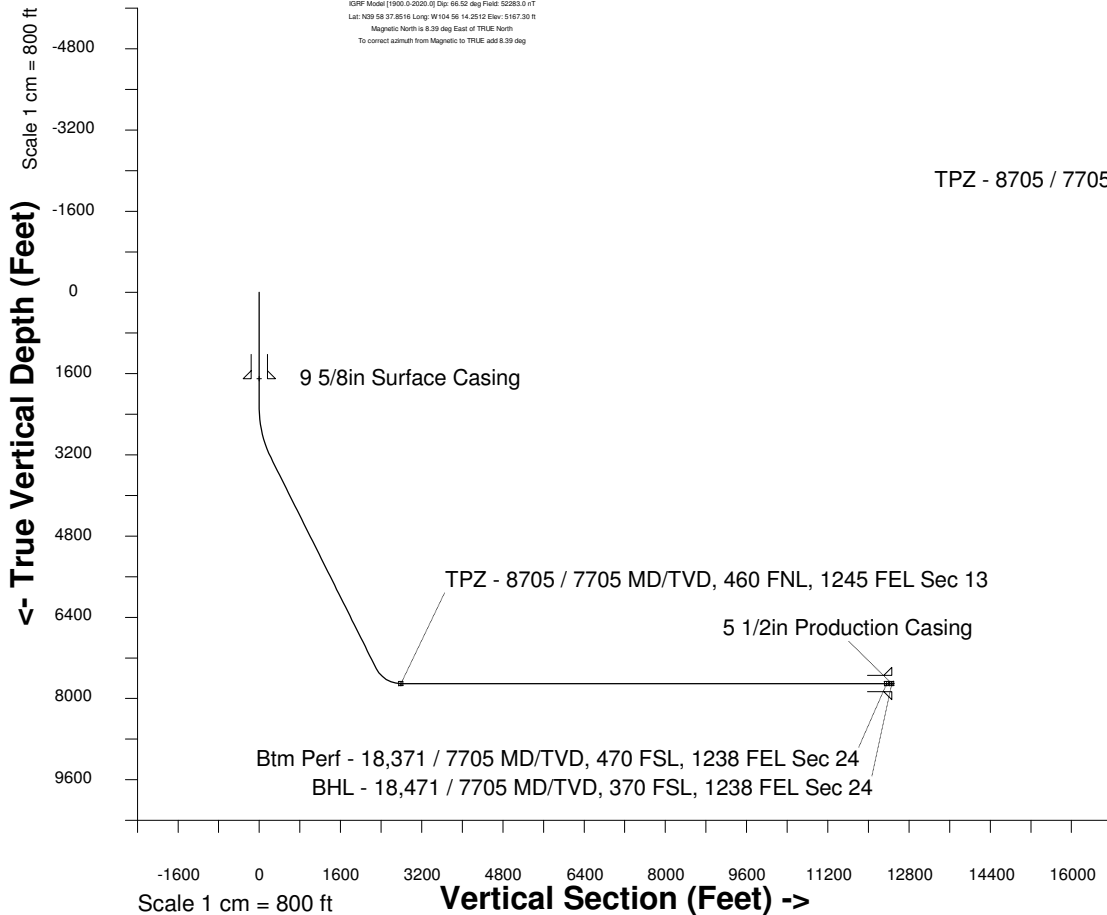
Location Colorado
Field Wattenburg
Installation Tollway
Slot N08 - Tollway LC 24-365HN
Well Tollway LC 24-365HN
Wellbore Tollway LC 24-365HN (PWB)

Created by admin
Date plotted 17-Jan-2018
Plot reference is Tollway LC 24-365HN (PWB).
Ref wellpath is Tollway LC 24-365HN (PWP#1).
Coordinates are in Feet reference N08 - Tollway LC 24-365HN.
True Vertical Depths are reference Rig Datum.
Measured Depths are reference Rig Datum.
Rig Datum: Planned Datum #1
Rig Datum to Mean Sea Level: 5187.30 ft.
Plot North is aligned to TRUE North.

Scale 1 cm = 500 ft East (Feet) ->

-10000 -9000 -8000 -7000 -6000 -5000 -4000 -3000 -2000 -1000 0 1000 2000 3000

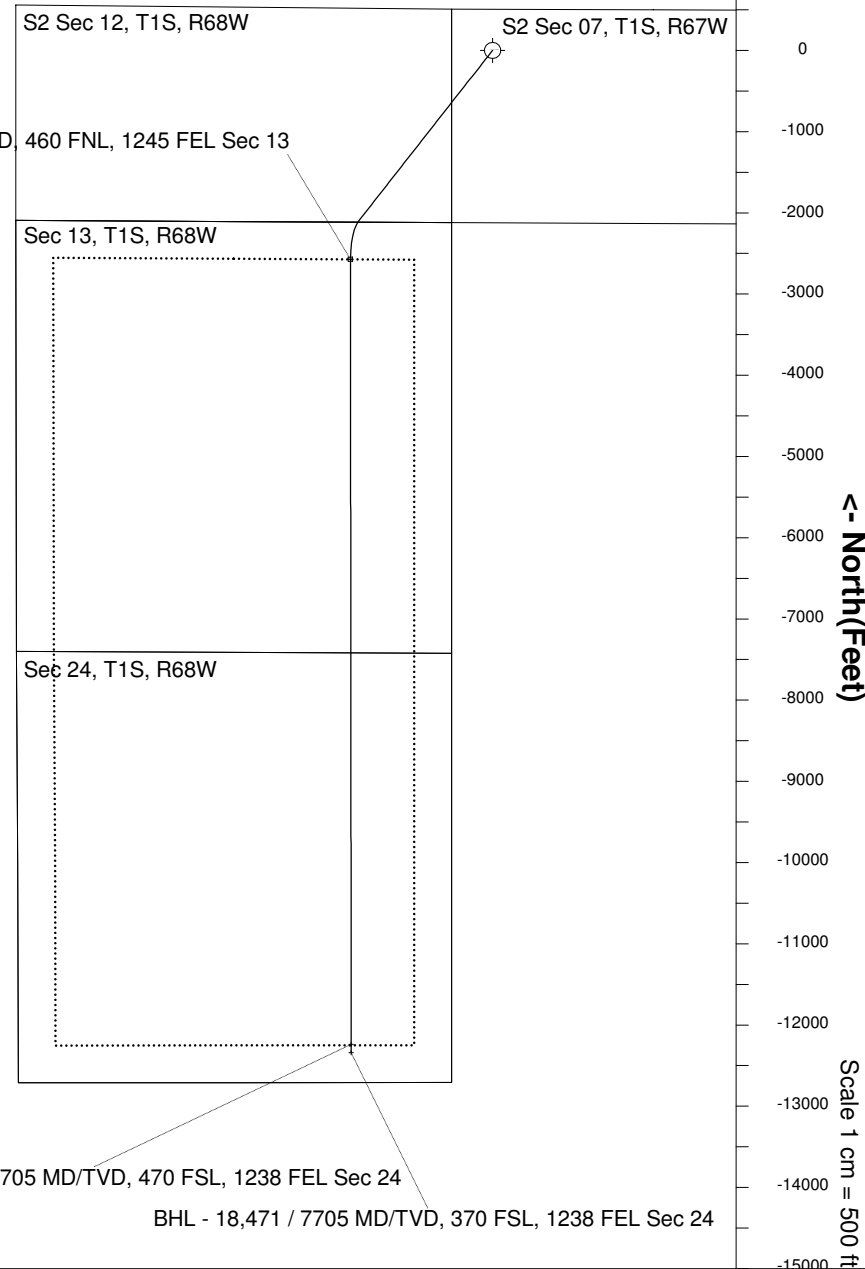
20-Apr-2016
KOPF Model [1900.0-2020.0] Dip: 66.52 deg Field: 52283.0 nT
Lat: N08 58 37.8516 Long: W104 56 14.2512 Elev: 5167.30 ft
Magnetic North is 8.39 deg East of TRUE North
To correct azimuth from Magnetic to TRUE, add 8.39 deg



Scale 1 cm = 800 ft
Vertical Section (Feet) ->
Azimuth 188.03 with reference 0.00 N, 0.00 E from N08 - Tollway LC 24-365HN

WELL PROFILE DATA

Point	MD	Inc	Azi	TVD	North	East	deg/100ft	V. Sect
Tie on	0.00	0.00	0.00	0.00	S 0.00	W 0.00		-0.00
KOP	2284.00	0.00	218.13	2284.00	S 0.00	W 0.00	0.00	-0.00
End of Build	3284.13	30.00	218.13	3239.05	S 201.32	W 158.04	9.84	221.42
End of Hold	8097.37	30.00	218.13	7407.26	S 2094.56	W 1644.25	0.00	2303.73
Target TPZ - ...Sec 13	8705.15	90.00	179.95	7705.00	S 2573.61	W 1750.09	36.09	2792.87
Target Btm Pe...Sec 24	18371.45	90.00	179.95	7705.00	S 12239.91	W 1740.96	0.00	12363.10
End of Turn	18371.98	90.00	180.00	7705.00	S 12240.44	W 1740.96	36.09	12363.62
T.D. & Target BHL... 24	18471.26	90.00	180.00	7705.00	S 12339.73	W 1740.96	0.00	12461.93



Btm Perf - 18,371 / 7705 MD/TVD, 470 FSL, 1238 FEL Sec 24
BHL - 18,471 / 7705 MD/TVD, 370 FSL, 1238 FEL Sec 24