

# Great Western Operating Company, LLC

**Location** Colorado  
**Field** Wattenburg  
**Installation** Tollway  
**Slot** N06 - Tollway LC 24-363HNX  
**Well** Tollway LC 24-363HNX  
**Wellbore** Tollway LC 24-363HNX (PWB)

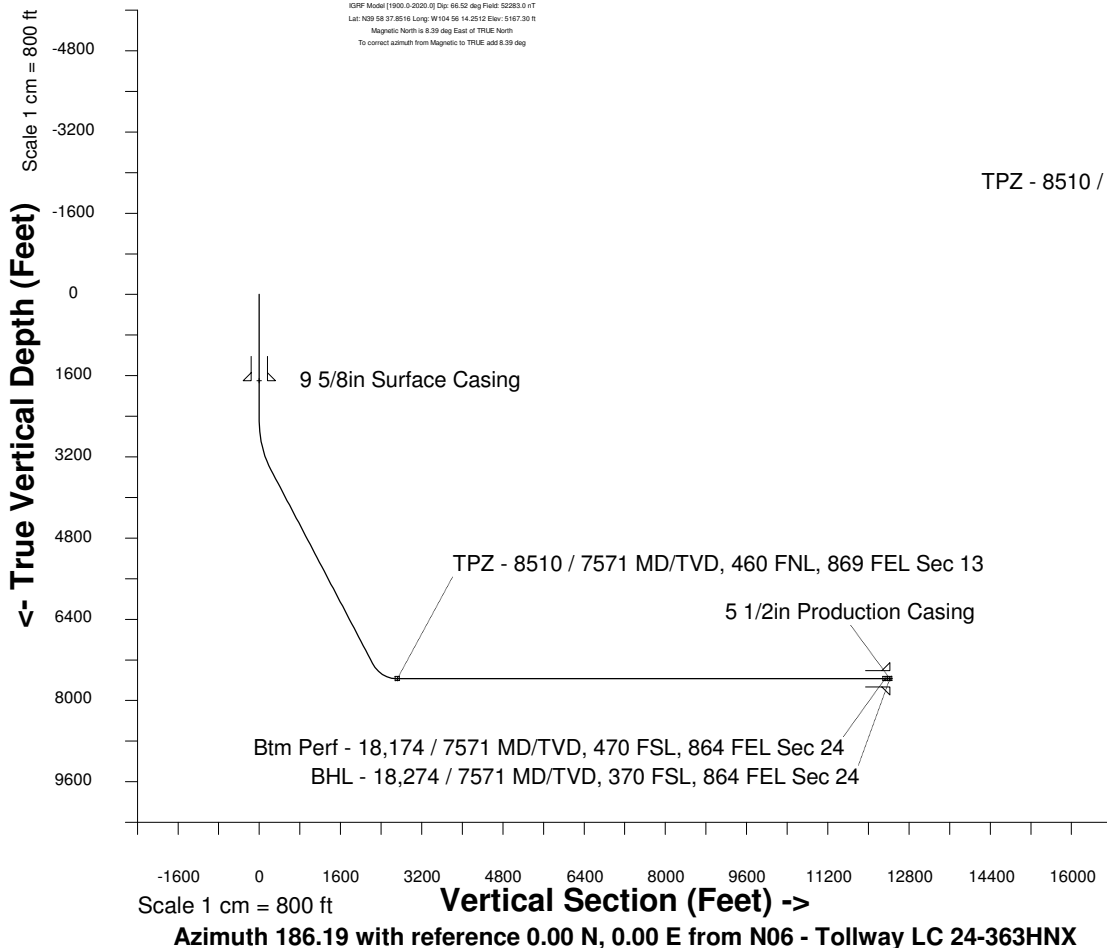
Created by admin  
Date plotted 17-Jan-2018  
Plot reference is Tollway LC 24-363HNX (PWB).  
Ref wellpath is Tollway LC 24-363HNX (PWP#1).  
Coordinates are in Feet reference N06 - Tollway LC 24-363HNX.  
True Vertical Depths are reference Rig Datum.  
Measured Depths are reference Rig Datum.  
Rig Datum: Planned Datum #1  
Rig Datum to Mean Sea Level: 5187.30 ft.  
Plot North is aligned to TRUE North.

Scale 1 cm = 500 ft

East (Feet) ->

-10000 -9000 -8000 -7000 -6000 -5000 -4000 -3000 -2000 -1000 0 1000 2000 3000

20-Apr-2016  
KOPF Model [1900.0-2020.0] Dip: 66.52 deg Field: 52283.0 rT  
Lat: N06 58 37.8516 Long: W104 56 14.2512 Elev: 5167.30 ft  
Magnetic North is 6.39 deg East of TRUE North  
To correct azimuth from Magnetic to TRUE, add 6.39 deg



## WELL PROFILE DATA

Point	MD	Inc	Azi	TVD	North	East	deg/100ft	V. Sect
Tie on	0.00	0.00	0.00	0.00	S 0.00	W 0.00		-0.00
KOP	2503.00	0.00	210.81	2503.00	S 0.00	W 0.00	0.00	-0.00
End of Build	3503.03	30.00	210.81	3457.95	S 219.78	W 131.05	9.84	232.63
End of Hold	7923.25	30.00	210.81	7285.95	S 2118.07	W 1263.00	0.00	2241.91
Target TPZ - ...Sec 13	8510.34	90.00	179.96	7571.00	S 2588.58	W 1347.04	36.09	2718.73
Target Btm Pe...Sec 24	18174.45	90.00	179.96	7571.00	S 12252.69	W 1339.72	0.00	12325.71
End of Turn	18174.88	90.00	180.00	7571.00	S 12253.11	W 1339.72	36.09	12326.13
T.D. & Target BHL... 24	18274.27	90.00	180.00	7571.00	S 12352.50	W 1339.72	0.00	12424.94

Btm Perf - 18,174 / 7571 MD/TVD, 470 FSL, 864 FEL Sec 24  
BHL - 18,274 / 7571 MD/TVD, 370 FSL, 864 FEL Sec 24

