

# Great Western Operating Company, LLC

**Location** Colorado  
**Field** Wattenburg  
**Installation** Tollway  
**Slot** N05 - Tollway LC 24-363HN  
**Well** Tollway LC 24-363HN  
**Wellbore** Tollway LC 24-363HN (PWB)

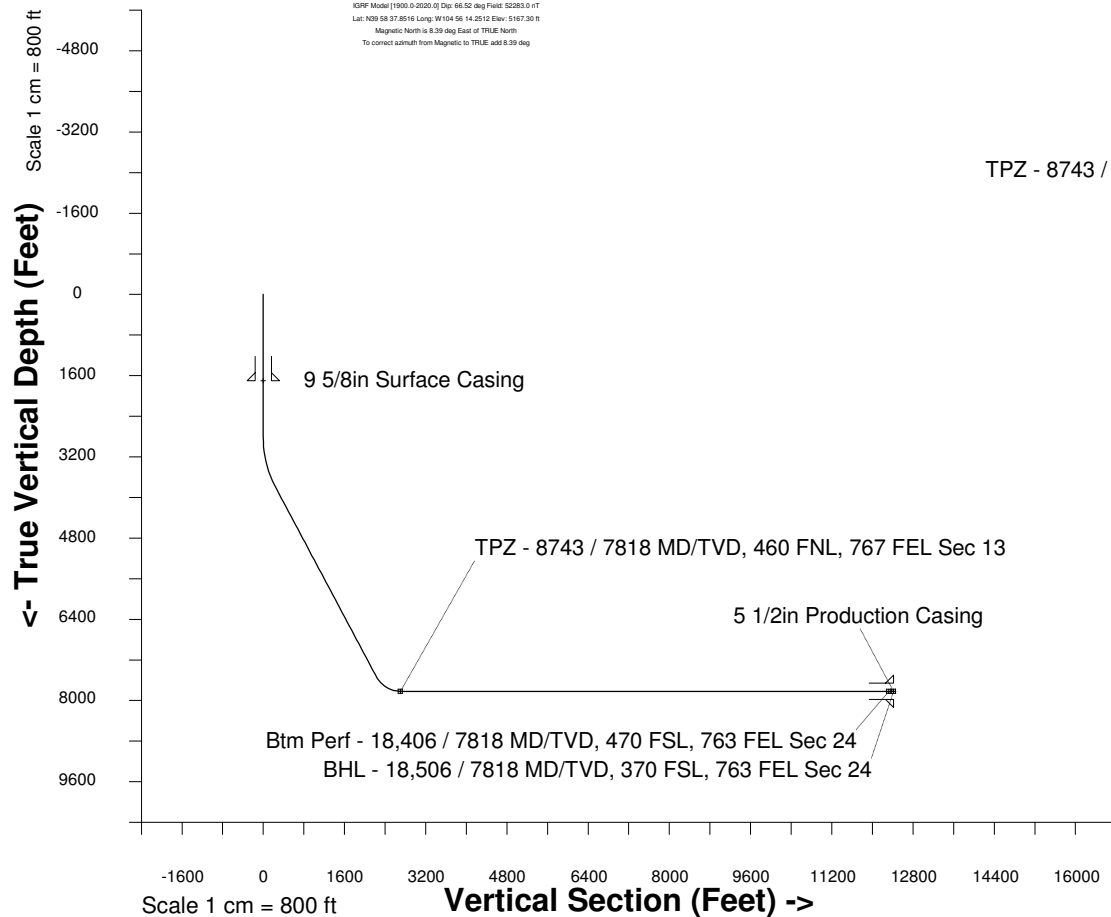
Created by admin  
Date plotted 17-Jan-2018

Plot reference is Tollway LC 24-363HN (PWB).  
Ref wellpath is Tollway LC 24-363HN (PWP#1).  
Coordinates are in Feet reference N05 - Tollway LC 24-363HN.  
True Vertical Depths are reference Rig Datum.  
Measured Depths are reference Rig Datum.  
Rig Datum: Planned Datum #1  
Rig Datum to Mean Sea Level: 5187.30 ft.  
Plot North is aligned to TRUE North.

Scale 1 cm = 500 ft  
East (Feet) ->

-10000 -9000 -8000 -7000 -6000 -5000 -4000 -3000 -2000 -1000 0 1000 2000 3000

20-Apr-2016  
KOPF Model [1900.0-2020.0] Dip: 66.52 deg Field: 52283.0 nT  
Lat: N05 58 37.8516 Long: W104 56 14.2512 Elev: 5167.30 ft  
Magnetic North is 6.39 deg East of TRUE North  
To correct azimuth from Magnetic to TRUE, add 6.39 deg



Scale 1 cm = 800 ft  
Vertical Section (Feet) ->  
Azimuth 185.66 with reference 0.00 N, 0.00 E from N05 - Tollway LC 24-363HN

## WELL PROFILE DATA

Point	MD	Inc	Azi	TVD	North	East	deg/100ft	V. Sect
Tie on	0.00	0.00	0.00	0.00	S 0.00	W 0.00		-0.00
KOP	2831.00	0.00	208.48	2831.00	S 0.00	W 0.00	0.00	-0.00
End of Build	3830.84	30.00	208.48	3785.79	S 224.84	W 121.97	9.84	235.78
End of Hold	8161.50	30.00	208.48	7536.43	S 2127.89	W 1154.28	0.00	2231.39
Target TPZ - ...Sec 13	8742.79	90.00	179.96	7818.00	S 2595.87	W 1231.57	36.09	2704.71
Target Btm Pe...Sec 24	18406.17	90.00	179.96	7818.00	S 12259.25	W 1225.32	0.00	12320.33
End of Turn	18406.54	90.00	180.00	7818.00	S 12259.61	W 1225.31	36.09	12320.69
T.D. & Target BHL... 24	18505.99	90.00	180.00	7818.00	S 12359.06	W 1225.32	0.00	12419.66

Btm Perf - 18,406 / 7818 MD/TVD, 470 FSL, 763 FEL Sec 24  
BHL - 18,506 / 7818 MD/TVD, 370 FSL, 763 FEL Sec 24

