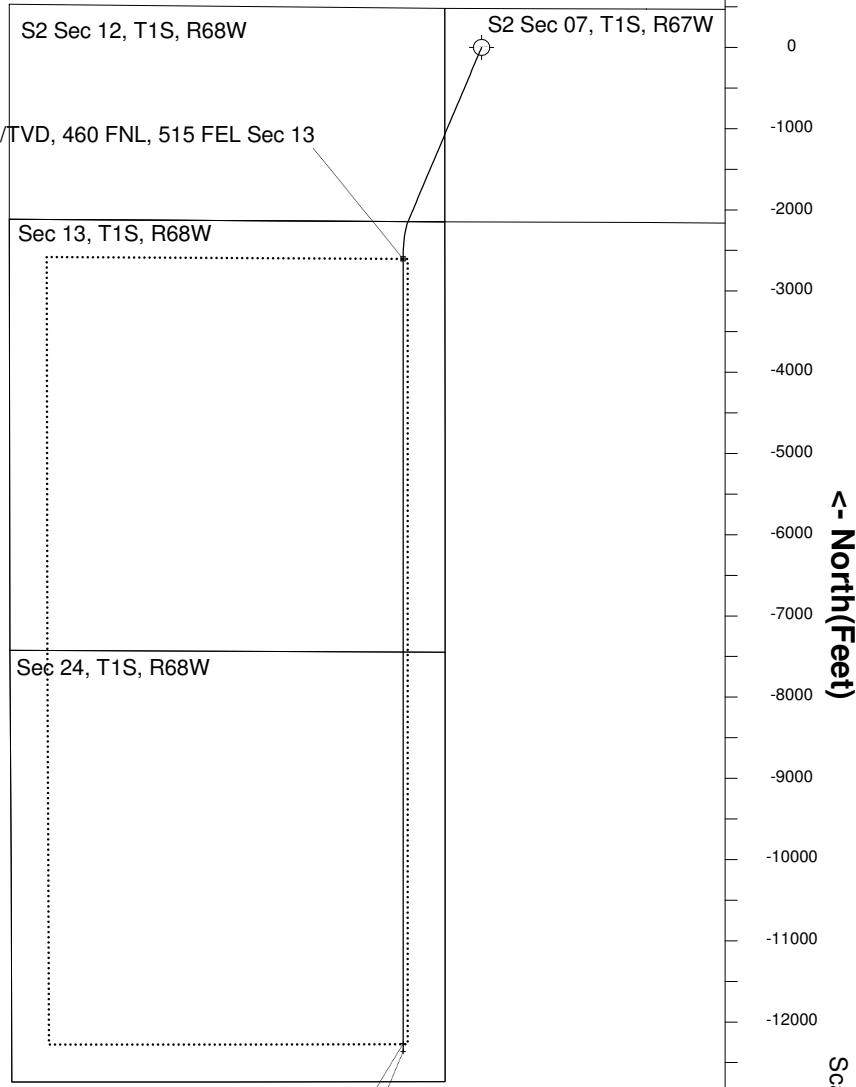
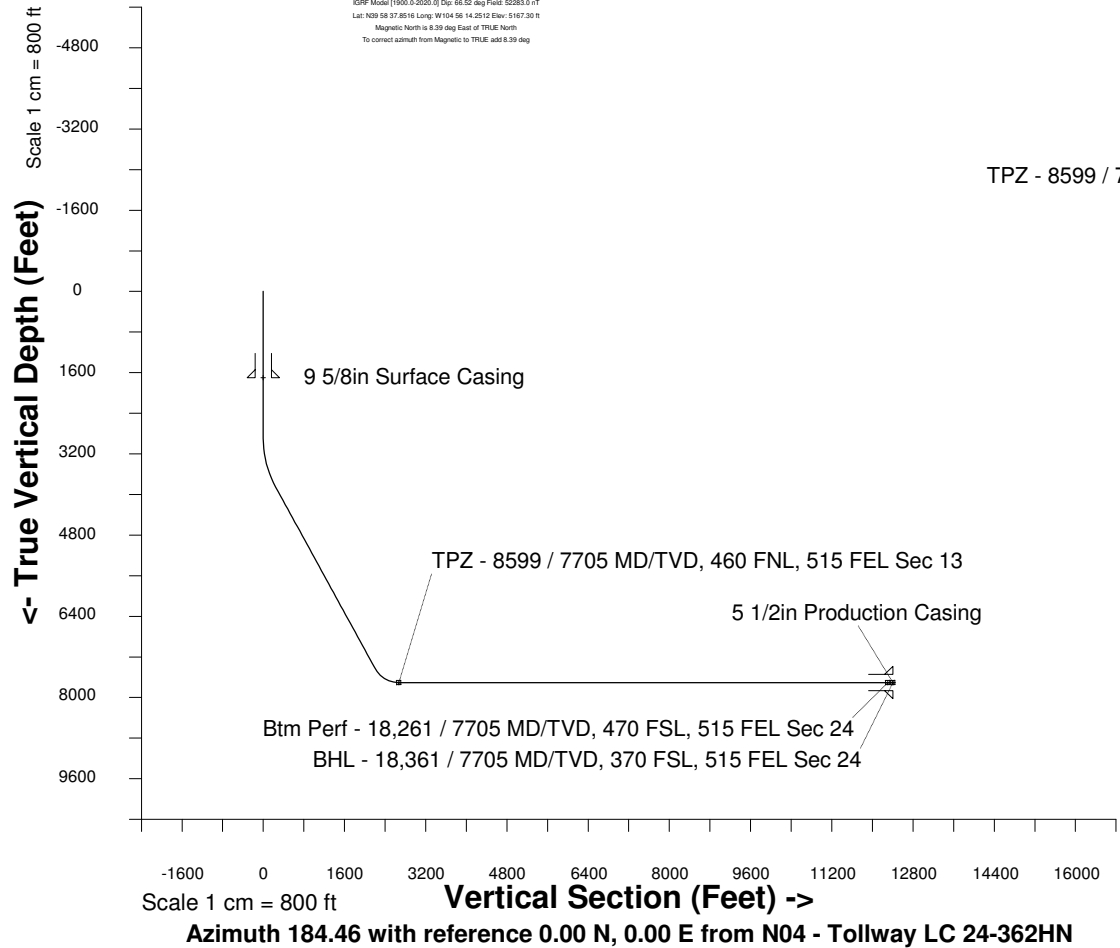
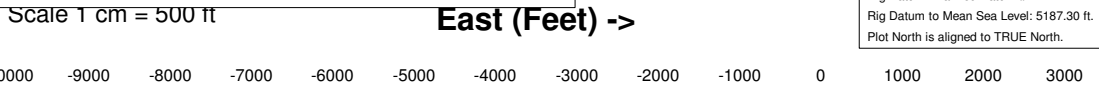
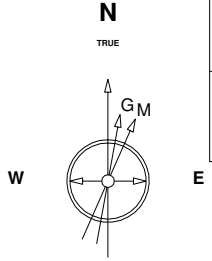


# Great Western Operating Company, LLC

Created by admin  
Date plotted 17-Jan-2018

**Location** Colorado      **Slot** N04 - Tollway LC 24-362HN  
**Field** Wattenburg      **Well** Tollway LC 24-362HN  
**Installation** Tollway      **Wellbore** Tollway LC 24-362HN (PWB)

Plot reference is Tollway LC 24-362HN (PWB).  
 Ref wellpath is Tollway LC 24-362HN (PWP#1).  
 Coordinates are in Feet reference N04 - Tollway LC 24-362HN.  
 True Vertical Depths are reference Rig Datum.  
 Measured Depths are reference Rig Datum.  
 Rig Datum: Planned Datum #1  
 Rig Datum to Mean Sea Level: 5187.30 ft.  
 Plot North is aligned to TRUE North.



Btm Perf - 18,261 / 7705 MD/TVD, 470 FSL, 515 FEL Sec 24  
 BHL - 18,361 / 7705 MD/TVD, 370 FSL, 515 FEL Sec 24

## WELL PROFILE DATA

Point	MD	Inc	Azi	TVD	North	East	deg/100ft	V. Sect
Tie on	0.00	0.00	0.00	0.00	S 0.00	W 0.00		-0.00
KOP	2894.00	0.00	202.91	2894.00	S 0.00	W 0.00	0.00	-0.00
End of Build	3894.07	30.00	202.91	3848.99	S 235.73	W 99.61	9.84	242.76
End of Hold	8030.15	30.00	202.91	7430.87	S 2140.81	W 904.60	0.00	2204.64
Target TPZ - ...Sec 13	8599.03	90.00	179.99	7705.00	S 2603.16	W 966.14	36.09	2670.38
Target Btm Pe...Sec 24	18260.96	90.00	179.99	7705.00	S 12265.09	W 963.99	0.00	12302.91
End of Turn	18261.10	90.00	180.00	7705.00	S 12265.23	W 963.99	36.09	12303.05
T.D. & Target BHL... 24	18361.14	90.00	180.00	7705.00	S 12365.27	W 963.99	0.00	12402.79

Scale 1 cm = 500 ft