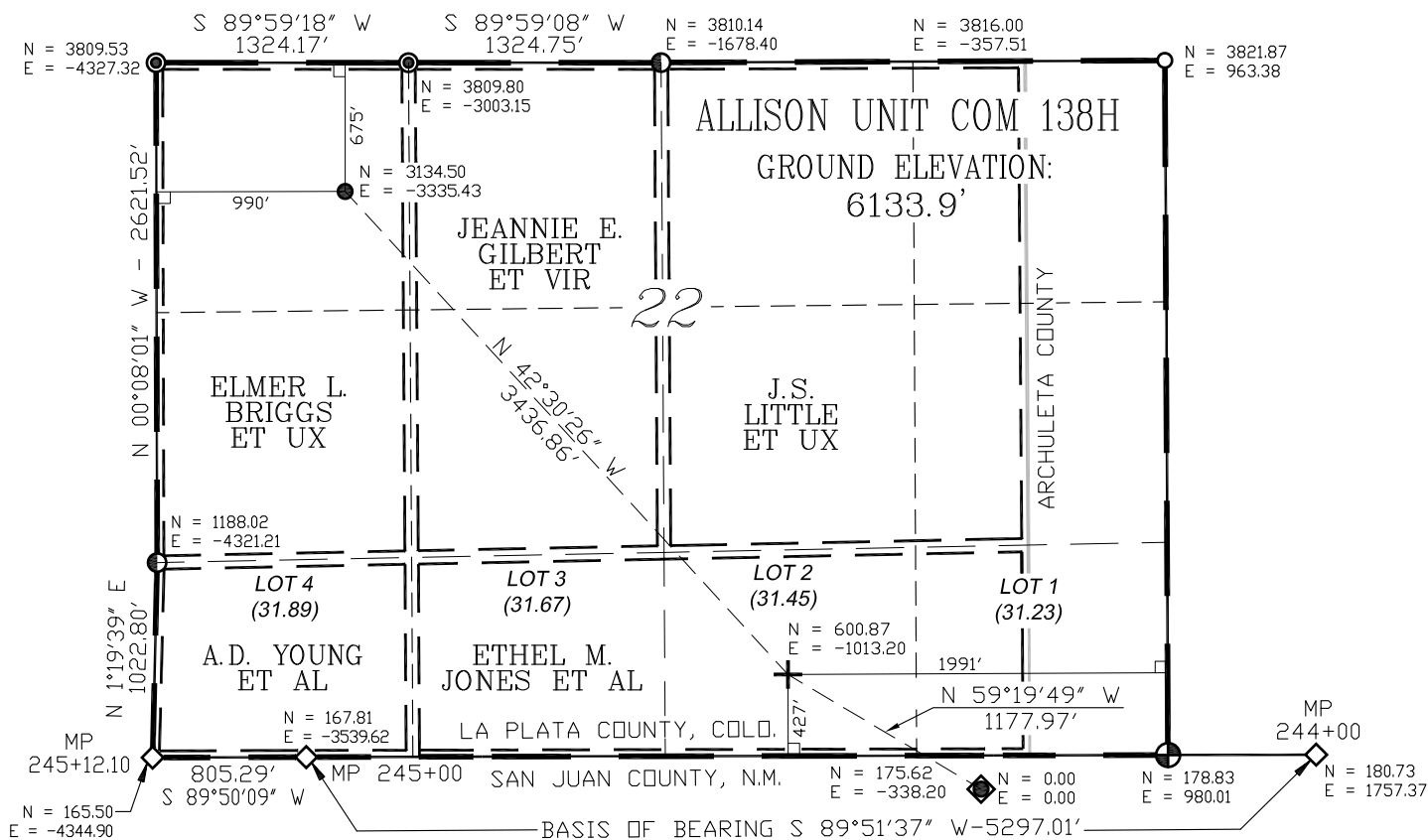


HILCORP ENERGY COMPANY

ALLISON UNIT COM 138H

176' FNL & 2615' FWL (SURFACE), SEC. 8, SAN JUAN COUNTY, N.M.
675' FNL & 990' FWL (BOTTOM HOLE) SEC. 22, LA PLATA COUNTY, COLO.
OF T-32-N, R-6-W, N.M.P.M.,
GROUND ELEVATION: 6133.9'



NOTES

1. SURFACE BEARINGS AND DISTANCES ARE SHOWN.
2. NORTHING & EASTING COORDINATES ARE REFERENCED TO LOCALIZED SYSTEM WITH THE SURFACE LOCATION DEFINED AS THE ORIGIN.
3. BEARINGS & DISTANCES SHOWN ARE BASED ON GPS OBSERVATIONS WITH A LOCALIZED TRANSVERSE MERCATOR PROJECTION, PROJECTED TO GROUND COORDINATES WITH THE ORIGIN AT THE WELL FLAG LOCATION.

LEGEND

- ◆ SURFACE LOCATION
- BOTTOM HOLE LOCATION
- ① 1965 B.L.M. BRASS CAP
- ② 1965 B.L.M. BRASS CAP (CC)
- ⊙ ALUMINUM CAP LS #17482
- ALUMINUM CAP LS #33648
- ◇ MILE POST (244+00, 245+00, 245+12.10)
- L DENOTES 90° TIE
- ✚ PILOT

GEO. SURFACE VALUES

LATITUDE (NAD 83)

NORTH 36.9996500°

LONGITUDE (NAD 83)

WEST 107.4819169°



SCALE: 1" = 1000'

BASIS OF BEARING

AS MEASURED BETWEEN MILE POSTS
244 & 245 ON THE NEW MEXICO / COLORADO STATE LINE.
BEARS: S 89°51'37" W - 5297.01'

HILCORP ENERGY COMPANY



P.O. BOX 3651
FARMINGTON, NM 87499
OFFICE: (505) 334-0408

SCALE: 1" = 1000'

JOB No. 10730

DATE: 05/12/14

DRILLER'S DIAGRAM FOR HILCORP ENERGY COMPANY ALLISON UNIT COM 138H

**SURFACE: 176' F/NL & 2615' F/WL, SEC. 8,
T. 32 N, R. 6 W, N.M.P.M. SAN JUAN COUNTY, N.M.**
**BOTTOM HOLE: 675' F/NL & 990' F/WL, SEC. 22,
T. 32 N, R. 6 W, N.M.P.M. LA PLATA COUNTY, COLO.**