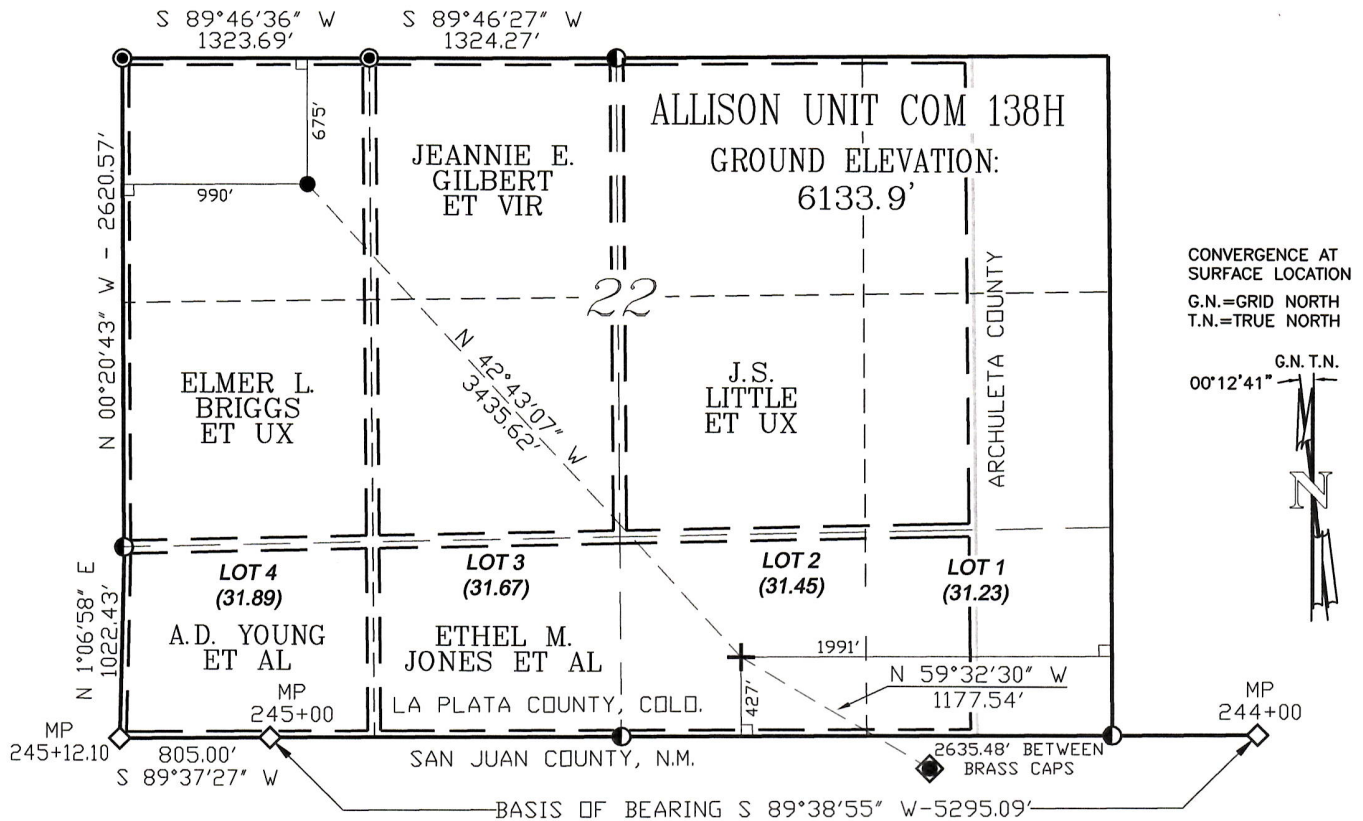


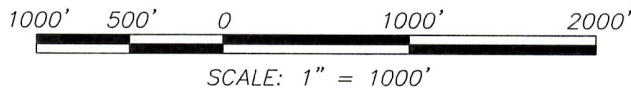
# T. 32 N., R. 6 W.



## BASIS OF BEARING/DATUM

NM SP WEST (1983) - NAVD 88 ELEV., GPS OBSERVATIONS:  
AS MEASURED BETWEEN MP 244 & MP 245 ON THE  
NEW MEXICO/COLORADO STATE LINE

BASIS OF ELEVATION: AS MEASURED AT OPUS ADJUSTED CONTROL POINT  
LOCATED IN THE SW/4 OF SECTION 9, ELEVATION: 6148.68';  
T-32-N, R-6-W, N.M.P.M., SAN JUAN COUNTY, NEW MEXICO



## GEO. BOTTOM HOLE VALUES

(CALCULATED BOTTOM HOLE VALUES  
DERIVED FROM HILCORP DESIGN FOOTAGES)

## GEO. SURFACE VALUES

LATITUDE (NAD 83)  
NORTH 36.9996500°  
LONGITUDE (NAD 83)  
WEST 107.4819169°

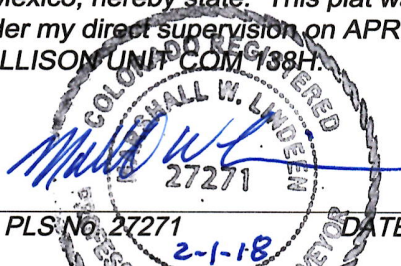
LATITUDE (NAD 27)  
NORTH 36°59.97870'  
LONGITUDE (NAD 27)  
WEST 107°28.87869'

LATITUDE (NAD 83)  
NORTH 37.0082561°  
LONGITUDE (NAD 83)  
WEST 107.4933364°

LATITUDE (NAD 27)  
NORTH 37°00.49507'  
LONGITUDE (NAD 27)  
WEST 107°29.56383'

## SURVEYOR'S STATEMENT:

I, Marshall W. Lindeen, of Farmington, New Mexico, hereby state: This plat was made from notes taken during an actual survey under my direct supervision on APRIL 07, 2014, and it correctly shows the location of ALLISON UNIT COM 138H.



## PILOT

(CALCULATED VALUES)  
LATITUDE (NAD 83)  
NORTH 37.0013000°  
LONGITUDE (NAD 83)  
WEST 107.4853856°

LATITUDE (NAD 27)  
NORTH 37°00.07770'  
LONGITUDE (NAD 27)  
WEST 107°29.08680'

## LEGEND

- ◆ SURFACE LOCATION
- BOTTOM HOLE LOCATION
- ✚ PILOT
- 1965 B.L.M. BRASS CAP
- ALUMINUM CAP LS #17482
- ◇ MILE POST (244+00, 245+00, 245+12.10)
- L DENOTES 90° TIE

## NOTE:

P.D.O.P. VALUE: N/A  
BOTTOM HOLE IS CALCULATED  
POSITION. SURFACE USE IS  
NOT APPLICABLE.

## HILCORP ENERGY COMPANY



P.O. BOX 3651  
FARMINGTON, NM 87499  
OFFICE: (505) 334-0408

## PLAT OF DRILLING LOCATION FOR HILCORP ENERGY COMPANY ALLISON UNIT COM 138H

SURFACE: 176' F/NL & 2615' F/WL, SEC. 8,  
T. 32 N, R. 6 W, N.M.P.M., SAN JUAN COUNTY, N.M.  
BOTTOM HOLE: 675' F/NL & 990' F/WL, SEC. 22,  
T. 32 N, R. 6 W, N.M.P.M., LA PLATA COUNTY, COLO.

SCALE: 1" = 1000' JOB No. 10730 DATE: 05/07/14