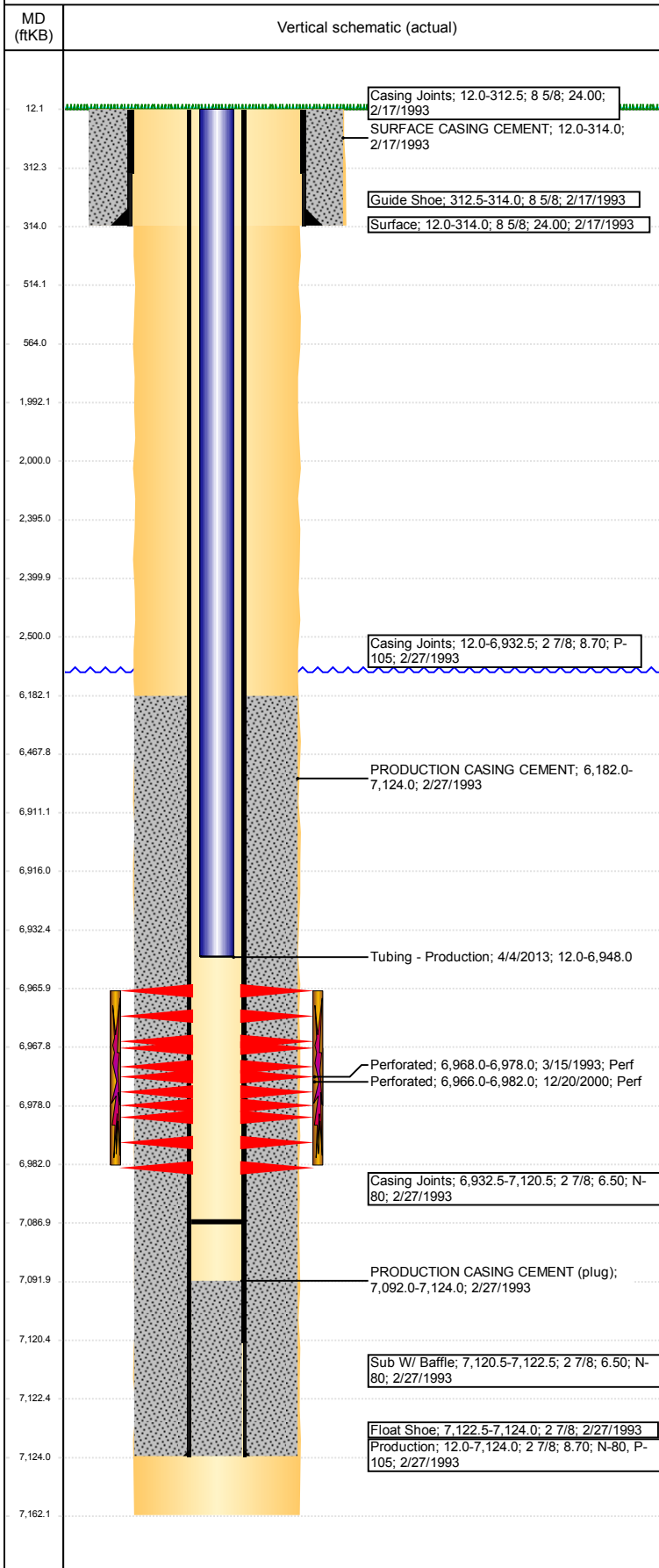


Well Name: SINGER E34-09

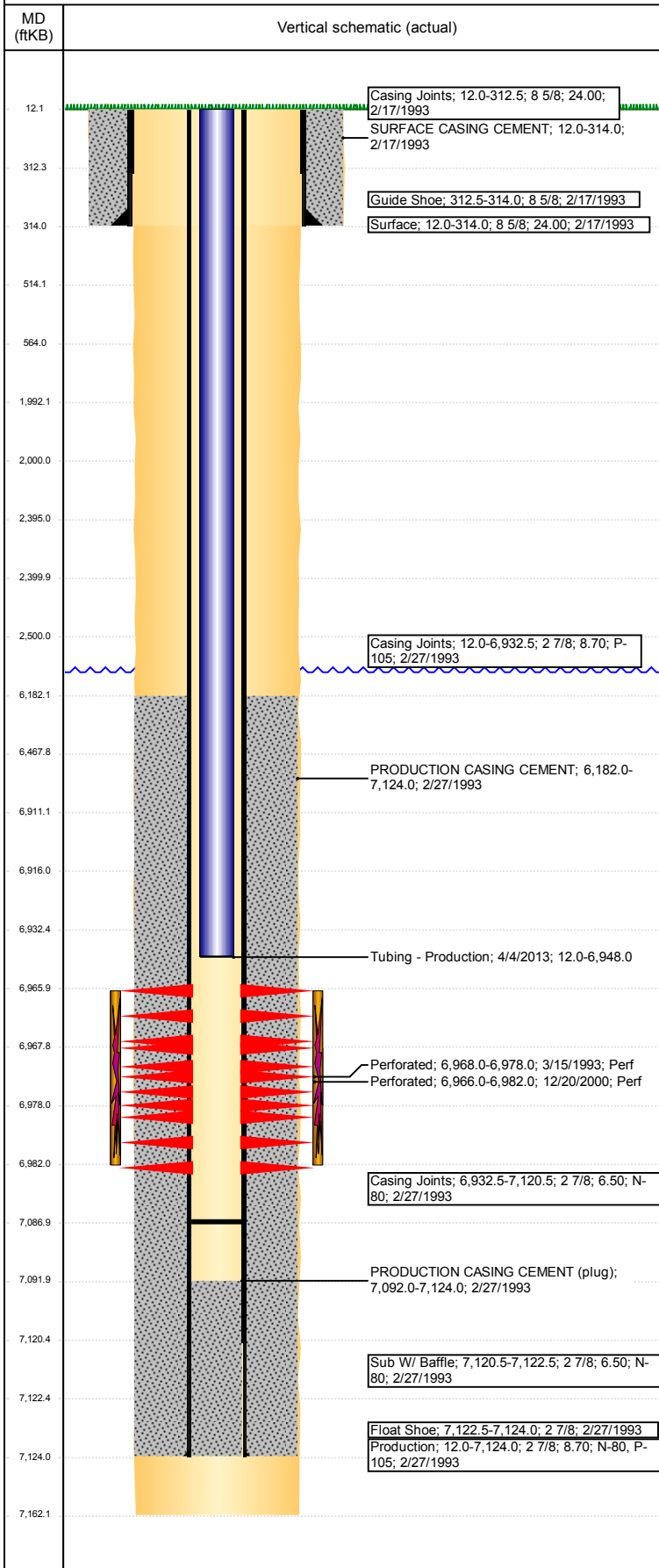
VERTICAL - ORIGINAL HOLE, 2/1/2018 10:47:51 AM



Well Header						
API 05-123-16702		Well Report Center 422119714		Well Configuration Type VERTICAL		
Original KB Elevation (ft) 4,678		KB - GL / MSL (ftKB) 12.00		Spud Date 2/16/1993		P & A Date
Production Route A2-06			Well Production Status SI			SoRT Ignore No
Directions To Well RD 45 & 62, N 4/10, W INTO.				Actual Latitude (°) 40.44018616		Actual Longitude (°) -104.64143991
Comment						
Congressional Location						
Quarter 3 NE	Quarter 4 SE	Section 34	Township 6	Twntshp N/S Dir N	Range 65	Range E/W Dir W
Rig Operator						
Rig Operator						
Plug Back Total Depths						
Date	Depth (ftKB)	Method		Com		
2/16/2013	7,087.0	TAG		C/O TO 7087' KB		
Wellbore Sections						
Section Des		Size (in)		Act Top, MD (ftKB)		Act Btm, MD (ftKB)
SURFACE		12 1/4		12		314
PRODUCTION		7 7/8		314		7,162
Zone Statuses						
Zone Name		Status Date			Status	
CODELL		9/22/2016			SI	
Casing Strings						
Surface, 314.0ftKB						
Casing Description	Run Date	OD (in)	Wt/Len (l...	Grade	Top, MD (ft...	MD (ftKB)
Surface	2/17/1993	8 5/8	24.00		12.0	314.0
Production, 7,124.0ftKB						
Casing Description	Run Date	OD (in)	Wt/Len (l...	Grade	Top, MD (ft...	MD (ftKB)
Production	2/27/1993	2 7/8	8.70	P-105	12.0	7,124.0
Cement						
Des		Start Date		Top (ftKB)		Btm (ftKB)
SURFACE CASING CEMENT		2/17/1993		12.0		314.0
PRODUCTION CASING CEMENT		2/27/1993		6,182.0		7,124.0
Proposed Cement						
Des				Top (ftKB)		Btm (ftKB)
Cement Plug				6,468.0		6,911.0
Cement Squeeze				2,000.0		2,500.0
Balance Plug				2,400.0		2,500.0
Cement Plug				1,992.0		2,395.0
Shoe Plug				514.0		564.0
Shoe Plug				12.0		514.0
Tubing Strings						
Tubing Description	Run Date	String...	ID (in)	Wt (lb/ft)	Grade	Len (ft)
Tubing - Production	4/4/2013	1.66	1.38		J-55	6,936.00
Set De...						
Tubing Components						
Item Des	OD (in)	Wt (lb/ft)	Grade	Jts	Len (ft)	Btm (ftKB)
Tubing	1.66		J-55	211	6,934.50	6,946.5
Notched Seat Nipple	1.66			1	1.50	6,948.0
Other In Hole						
Run Date	Des			OD (in)	Top (ftKB)	Btm (ftKB)
Proposed Other In Hole						
Des			OD (in)	Top (ftKB)		Btm (ftKB)
Cement Retainer			2.26	2,395.0		2,400.0
Cast Iron Bridge Plug			2.26	6,911.0		6,916.0
Logs						
Date	Type				Top, MD (ftKB)	Btm, MD (ftKB)
2/26/1993	COMPENSATED DENSITY				3,450.0	7,099.0
2/26/1993	INDUCTION				3,450.0	4,500.0
3/10/1993	CBL/CCL/GR				6,078.0	7,087.0

Well Name: SINGER E34-09

VERTICAL - ORIGINAL HOLE, 2/1/2018 10:47:51 AM



Perforation Data				
Linked Zone	Sum of Entered Shot Total	Top (ftKB)	Btm (ftKB)	Date
CODELL, ORIGINAL HOLE	64	6,966.00	6,982.00	12/20/2000
CODELL, ORIGINAL HOLE	40	6,968.00	6,978.00	3/15/1993
Total (Sum)	104			
Proposed Perforations				
Linked Zone	Sum of En...	Top Depth (ftKB)	Btm (ftKB)	Date
	0	2,500.00	2,500.00	1/31/2018
Total (Sum)	0			
Job Supply Amounts				
Supply Item Des	Type	Uni...	Job Category	Total... Total... Total...