

T4S, R65W, 6th P.M.

ConocoPhillips Company

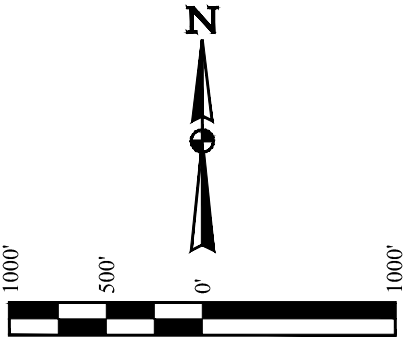
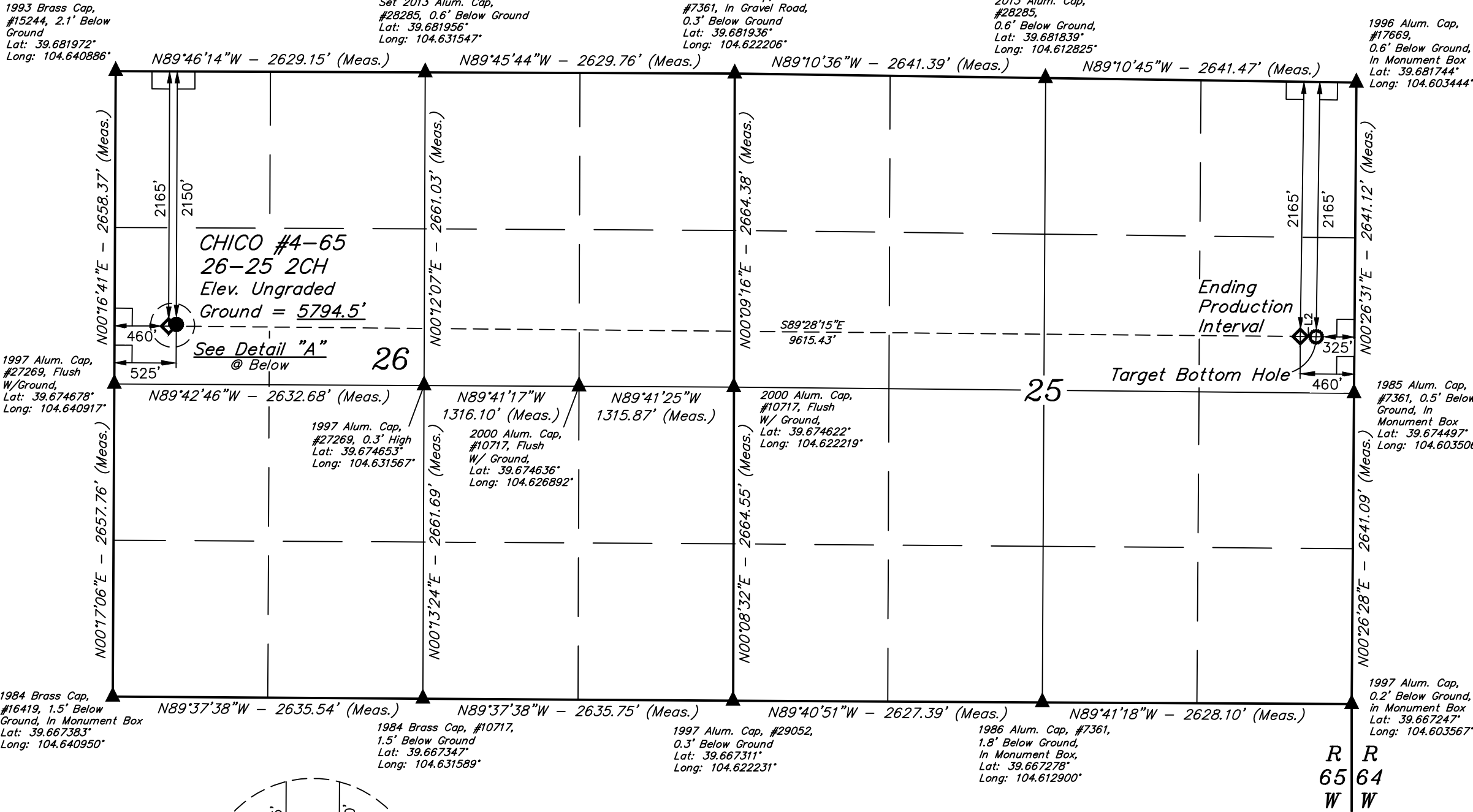
CHICO #4-65 26-25 2CH  
SW 1/4 NW 1/4, SECTION 26, T4S, R65W, 6th P.M.  
ARAPAHOE COUNTY, COLORADO

BASIS OF BEARINGS

BASIS OF BEARINGS IS A G.P.S. OBSERVATION

BASIS OF ELEVATION

BENCHMARK 374 LOCATED ON THE SECTION LINE BETWEEN  
SECTIONS 12 & 13, T5S, R64W, 6th. P.M., TAKEN FROM 1988  
PUBLISHED DATUM BY THE UNITED STATES DEPARTMENT OF  
THE INTERIOR, GEOLOGICAL SURVEY AS BEING 6054.61 FEET.



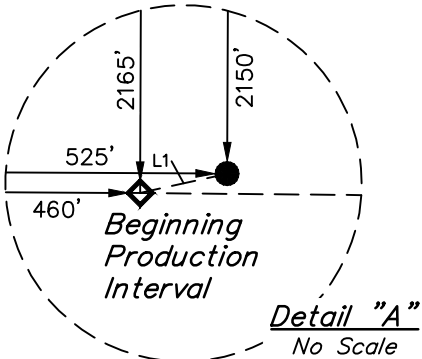
LINE TABLE		
LINE	DIRECTION	LENGTH
L1	S77°30'10"W	66.62'
L2	S89°10'45"E	135.00'

CERTIFICATE OF SURVEY  
THIS IS TO CERTIFY THAT THE ABOVE MAP WAS PREPARED FROM FIELD  
NOTES OF ACTUAL SURVEYS MADE BY ME OR UNDER MY SUPERVISION  
AND THAT THE SAME ARE TRUE AND CORRECT TO THE BEST OF MY  
KNOWLEDGE AND BELIEF.

REGISTERED LAND SURVEYOR  
REGISTRATION NO. 28285  
STATE OF COLORADO  
JULY 17, 2017

LEGEND:

- = 90° SYMBOL
- = PROPOSED WELLHEAD.
- ◇ = PRODUCTION INTERVAL.
- = TARGET BOTTOM HOLE.
- ▲ = SECTION CORNERS LOCATED.



PDOP = 1.2

NAD 83 (SURFACE LOCATION)	NAD 83 (BEG. PROD. INTERVAL)	NAD 83 (ENDING PROD. INTERVAL)	NAD 83 (TARGET BOTTOM HOLE)
LATITUDE = 39°40'33.84" (39.676068) LONGITUDE = 104°38'20.56" (104.639046)	LATITUDE = 39°40'33.70" (39.676028) LONGITUDE = 104°38'21.40" (104.639277)	LATITUDE = 39°40'32.95" (39.675820) LONGITUDE = 104°36'18.46" (104.605128)	LATITUDE = 39°40'32.93" (39.675815) LONGITUDE = 104°36'16.73" (104.604648)
NAD 27 (SURFACE LOCATION)	NAD 27 (BEG. PROD. INTERVAL)	NAD 27 (ENDING PROD. INTERVAL)	NAD 27 (TARGET BOTTOM HOLE)
LATITUDE = 39°40'33.89" (39.676081) LONGITUDE = 104°38'18.68" (104.638522)	LATITUDE = 39°40'33.75" (39.676041) LONGITUDE = 104°38'19.51" (104.638753)	LATITUDE = 39°40'33.00" (39.675833) LONGITUDE = 104°36'16.58" (104.604605)	LATITUDE = 39°40'32.98" (39.675828) LONGITUDE = 104°36'14.85" (104.604125)
STATE PLANE NAD 83 (CO. CEN.)	STATE PLANE NAD 83 (CO. CEN.)	STATE PLANE NAD 83 (CO. CEN.)	STATE PLANE NAD 83 (CO. CEN.)
N: 1672284.89 E: 3242336.45	N: 1672269.76 E: 3242271.59	N: 1672286.70 E: 3251884.16	N: 1672286.25 E: 3252019.12
STATE PLANE NAD 27 (CO. CEN.)	STATE PLANE NAD 27 (CO. CEN.)	STATE PLANE NAD 27 (CO. CEN.)	STATE PLANE NAD 27 (CO. CEN.)
N: 672277.48 E: 2242490.26	N: 672262.36 E: 2242425.40	N: 672279.46 E: 2252037.89	N: 672279.01 E: 2252172.85

REV: 1 11-20-17 J.J. (SL, BPI, EPI & TBH CHANGE)



UELS, LLC  
Corporate Office \* 85 South 200 East  
Vernal, UT 84078 \* (435) 789-1017

SURVEYED BY: CHAD MEIERS	DATE: 11-07-17
DRAWN BY: K.B.	DATE DRAWN: 07-15-15
SCALE: 1" = 1000'	
WELL LOCATION PLAT	