

HALLIBURTON

iCem[®] Service

TERRA ENERGY PARTNERS

For: Terra

Date: Wednesday, November 29, 2017

PA 543-26 Surface PJR

API# 05-045-23652-00

Sincerely,

Grand Junction Cement Engineering

2.0 Real-Time Job Summary

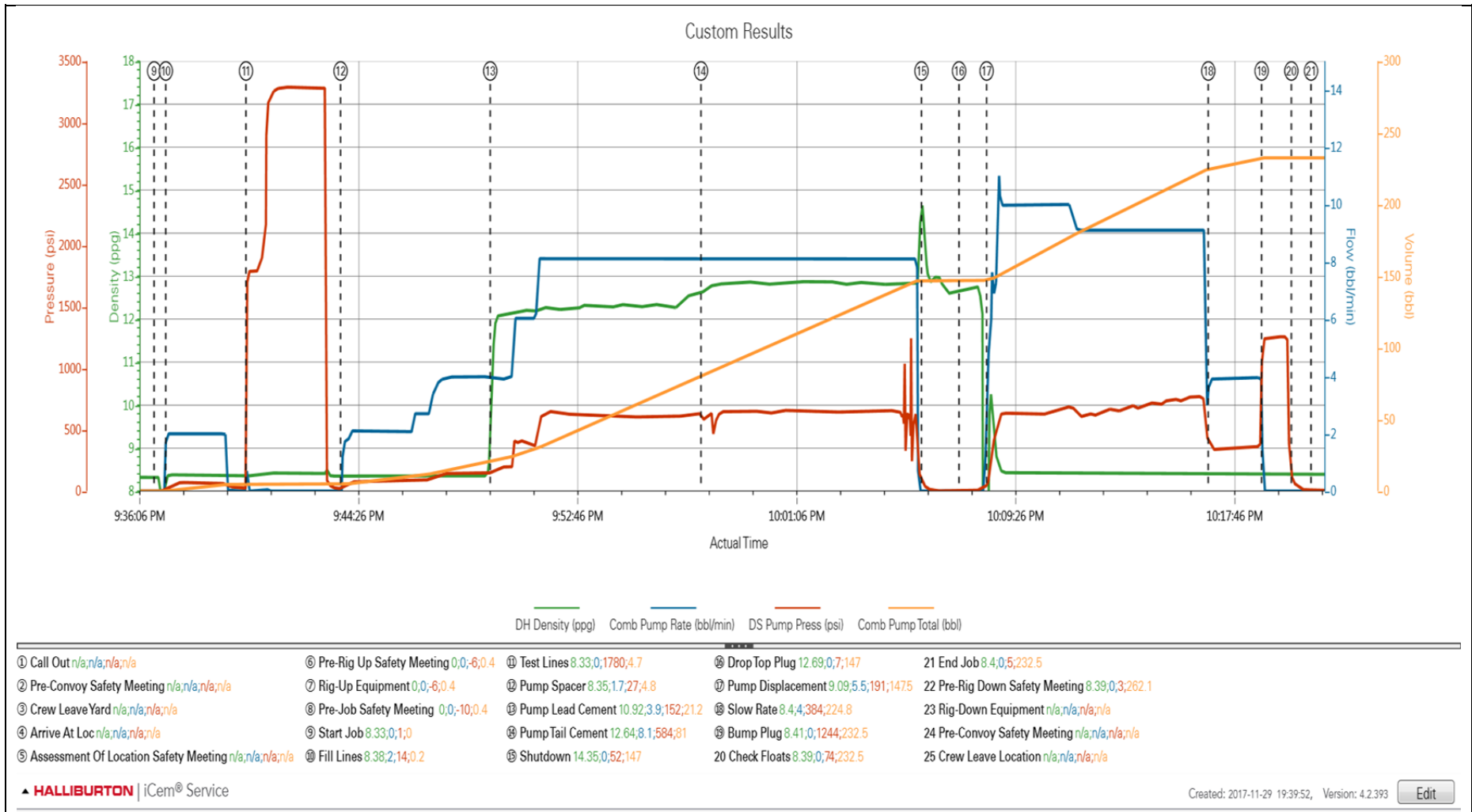
2.1 Job Event Log

Type	Seq. No.	Graph Label	Date	Time	Source	Downhole Density (ppg)	Combined Pump Rate (bbl/min)	Driv-Side Pump Pressure (psi)	Combined Pump Total (bbl)	Comments
Event	1	Call Out	11/29/2017	14:30:00						Requested on Location @ 18:30
Event	2	Pre-Convoy Safety Meeting	11/29/2017	16:20:00						
Event	3	Crew Leave Yard	11/29/2017	16:30:00						1 Elite, 1 660, 1 pickup
Event	4	Arrive At Loc	11/29/2017	18:30:00						Rig running casing
Event	5	Assessment Of Location Safety Meeting	11/29/2017	18:40:00						JSA completed - Customer offered/received SDS - water test pH 7.0, Cl <200, temp 48 degrees
Event	6	Pre-Rig Up Safety Meeting	11/29/2017	19:53:00						
Event	7	Rig-Up Equipment	11/29/2017	20:01:01						1 hardline to standpipe, water hoses to upright, bulk hoses to silo and 660.
Event	8	Pre-Job Safety Meeting	11/29/2017	21:15:12						All HES personnel, rig crew, and company rep
Event	9	Start Job	11/29/2017	21:36:44						TD 1145, TP 1135, SJ 38.66, CSG 9 5/8", OH 13 1/2", MUD 9.2
Event	10	Fill Lines	11/29/2017	21:37:10		8.33	2	72	5	Fresh Water
Event	11	Test Lines	11/29/2017	21:40:13				3230		Held For 2 Min. No Leaks
Event	12	Pump Spacer	11/29/2017	21:43:49		8.33	4	155	15	Fresh Water
Event	13	Pump Lead Cement	11/29/2017	21:49:31		12.3	8	640	53	125 sks, 12.3 ppg, 2.38 yield, 13.77 gal/sk
Event	14	Pump Tail Cement	11/29/2017	21:57:32		12.8	8	660	65.8	175 sks, 12.8 ppg, 2.11 yield, 11.78 gal/sk

Event	15	Shutdown	11/29/2017	22:05:56						
Event	16	Drop Top Plug	11/29/2017	22:07:22						
Event	17	Pump Displacement	11/29/2017	22:08:24	8.33	10	725			Fresh Water
Event	18	Slow Rate	11/29/2017	22:16:51	8.33	4	338	76		Slow Rate 10 bbls to calculated displacement
Event	19	Bump Plug	11/29/2017	22:18:52	8.33		1238	86.3		Plug Bumped at psi, Brought up to psi
Event	20	Check Floats	11/29/2017	22:20:00						Floats Held, ½ bbl Back To Truck
Event	21	End Job	11/29/2017	22:20:45						good returns throughout job, 16 bbls of cement to surface
Event	22	Pre-Rig Down Safety Meeting	11/29/2017	22:40:10						40 lbs sugar, No add hours
Event	23	Rig-Down Equipment	11/29/2017	22:52:29						
Event	24	Pre-Convoy Safety Meeting	11/29/2017	23:06:45						
Event	25	Crew Leave Location	11/29/2017	23:09:48						Thanks For Using Halliburton, Chris Martinez And Crew

3.0 Attachments

3.1 PA 543-26 -Custom Results.png



3.2 PA 543-26 -Custom Results (1).png

