

HALLIBURTON

iCem[®] Service

TERRA ENERGY PARTNERS

For: Terra

Date: Saturday, November 11, 2017

PA 343-26 Surface PJR

API #: 05-045-23662

Sincerely,

Grand Junction Engineering Team

2.0 Real-Time Job Summary

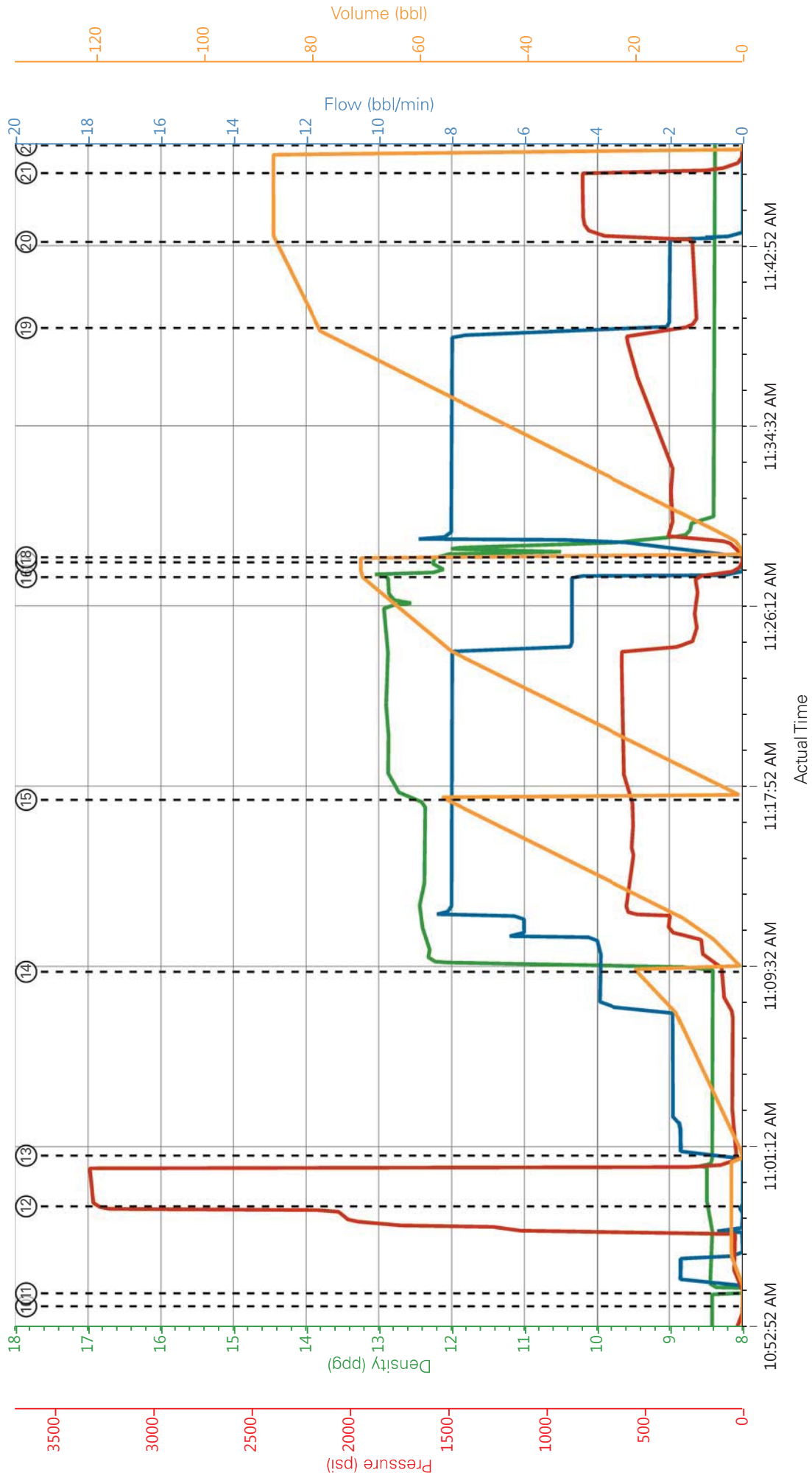
2.1 Job Event Log

Type	Seq. No.	Graph Label	Date	Time	Source	DH Density (ppg)	Comb Pump Rate (bbl/min)	PS Pump Press (psi)	Pump Sig Tot (bbl)	Comments
Event	1	Call Out	11/11/2017	03:00:00	USER					ON LOCATION REQUESTED 7:00. CREW WAITING IN FIELD
Event	2	Pre-Convoy Safety Meeting	11/11/2017	06:00:00	USER					ALL HES PRESENT
Event	3	Depart from Service Center or Other Site	11/11/2017	06:15:00	USER					
Event	4	Arrive at Location from Other Job or Site	11/11/2017	06:30:00	USER					RIG HAD NOT STARTED CASING
Event	5	Assessment Of Location Safety Meeting	11/11/2017	07:00:00	USER					MET WITH COMPANY REP DISCUSSED PROCEDURE, AND SDS OFFERED
Event	6	Pre-Rig Up Safety Meeting	11/11/2017	07:20:00	USER					ALL HES PRESENT
Event	7	Rig-Up Completed	11/11/2017	09:30:00	USER					1-ELITE,1-660 BULK TRAILER, 9.625" QL, 2" PUMP IRON, 4" SUCTION HOSE
Event	8	Pre-Job Safety Meeting	11/11/2017	10:00:00	USER					ALL HES AND RIG CREW PRESENT
Event	9	Other	11/11/2017	10:05:00	USER					WATER: TEMP-45, CL-500, PH-7. RIG CIRCULATED 40 550 GPM 250 PSI
Event	10	Start Job	11/11/2017	10:54:00	COM5	8.43	0.00	2.00	0.0	TD-1123', TP-1113.17', SJ-42.05', OH-13.5", MUD-9.5PPG, CSG-9.625" 32.3# H40

Event 11	Prime Pumps	11/11/2017	10:54:35	COM5	8:40	2:00	51.00	3.0	FRESH WATER
Event 12	Test Lines	11/11/2017	10:58:37	COM5	8:49	0:00	3305.00	3.1	ALL PRESSURE HELD
Event 13	Pump Spacer 1	11/11/2017	11:00:58	COM5	8:43	4:00	102.00	20.0	FRESH WATER
Event 14	Pump Lead Cement	11/11/2017	11:09:27	COM5	12:30	8:00	580.00	53.0	VARICEM LEAD 125SKS, 12.3PPG, 2.38CF/SK, 13.77GAL/SK
Event 15	Pump Tail Cement	11/11/2017	11:17:24	COM5	12:80	8:00	600.00	65.8	VARICEM TAIL 175SKS, 12.8PPG, 2.11CF/SK, 11.78GAL/SK
Event 16	Shutdown	11/11/2017	11:27:42	USER					END OF CEMENT
Event 17	Drop Top Plug	11/11/2017	11:28:23	COM5					PLUG AWAY VERIFIED BY TATTLE TAIL
Event 18	Pump Displacement	11/11/2017	11:28:38	COM5	8:37	8:00	580.00	84.3	FRESH WATER
Event 19	Slow Rate	11/11/2017	11:39:14	USER	8:37	2:00	252.00	74.0	SLOW RATE LAST 10 BBLs
Event 20	Bump Plug	11/11/2017	11:43:12	COM5	8:38	2:00	256.00	84.3	PLUG BUMPED 256 PSI
Event 21	Check Floats	11/11/2017	11:46:23	COM5	8:39	0:00	815.00	84.3	FLOATS HELD .5 BBL BACK
Event 22	End Job	11/11/2017	11:47:41	COM5	8:38	0:00	0.00	0.0	GOOD RETURNS THROUGH OUT JOB, 17 BBLs CEMENT TO SURFACE
Event 23	Post-Job Safety Meeting (Pre Rig-Down)	11/11/2017	11:53:00	USER					ALL HES PRESENT
Event 24	Rig-Down Completed	11/11/2017	12:40:00	USER					CLEANED PUMPS AND LINES TO PIT
Event 25	Pre-Convoy Safety	11/11/2017	13:00:00	USER					ALL HES PRESENT

Meeting		7
Event	26	Crew Leave Location
		11/11/201
		7
		13:15:00
		USER
		THANK YOU FOR CHOOSING HALLIBURTON, ANDREW BRENNECKE AND CREW

TEP - PA 343-26 - 9.625" SURFACE



DH Density (ppg) Comb Pump Rate (bbl/min) PS Pump Press (psi) Pump Stg Tot (bbl)

- ① Call Out
- ② Pre-Convoy Safety Meeting
- ③ Depart from Service Center or Other Site
- ④ Arrive at Location from Other Job or Site
- ⑤ Assessment Of Location Safety Meeting
- ⑥ Pre-Rig Up Safety Meeting
- ⑦ Rig-Up Completed
- ⑧ Pre-Job Safety Meeting
- ⑨ Other
- ⑩ Start Job
- ⑪ Prime Pumps
- ⑫ Test Lines
- ⑬ Pump Spacer 1
- ⑭ Pump Lead Cement
- ⑮ Pump Tail Cement
- ⑯ Shutdown
- ⑰ Drop Top Plug
- ⑱ Pump Displacement
- ⑲ Pump Lead Cement
- ⑳ Bump Plug
- ㉑ Check Floats
- ㉒ End Job
- ㉓ Post-Job Safety Meeting (Pre Rig-Down)
- ㉔ Rig-Down Completed
- ㉕ Pre-Convoy Safety Meeting

Edit

Created: 2017-11-11 08:03:12, Version: 4.2.393

HALLIBURTON | iCem® Service

Customer: TERRA ENERGY PARTNERS
 Representative: GARRETT WADE

Job Date: 11/11/2017 9:17:21 AM
 Sales Order #: 904428206

Well: TRI STATE TRUCKING PA 343-26
 ELITE#8: A.BRENNECKE/S.BLOSSOM

TEP - PA 343-26 - 9.625" SURFACE

