

# HALLIBURTON

iCem<sup>®</sup> Service

## **TERRA ENERGY PARTNERS-EBUS**

**For: Terra Energy Partners**

Date: Sunday, November 05, 2017

**TRI STATE TRUCKING PA 43-26**

API: 05-045-23640-00

Sincerely,

**Grand Junction Cement Engineering**

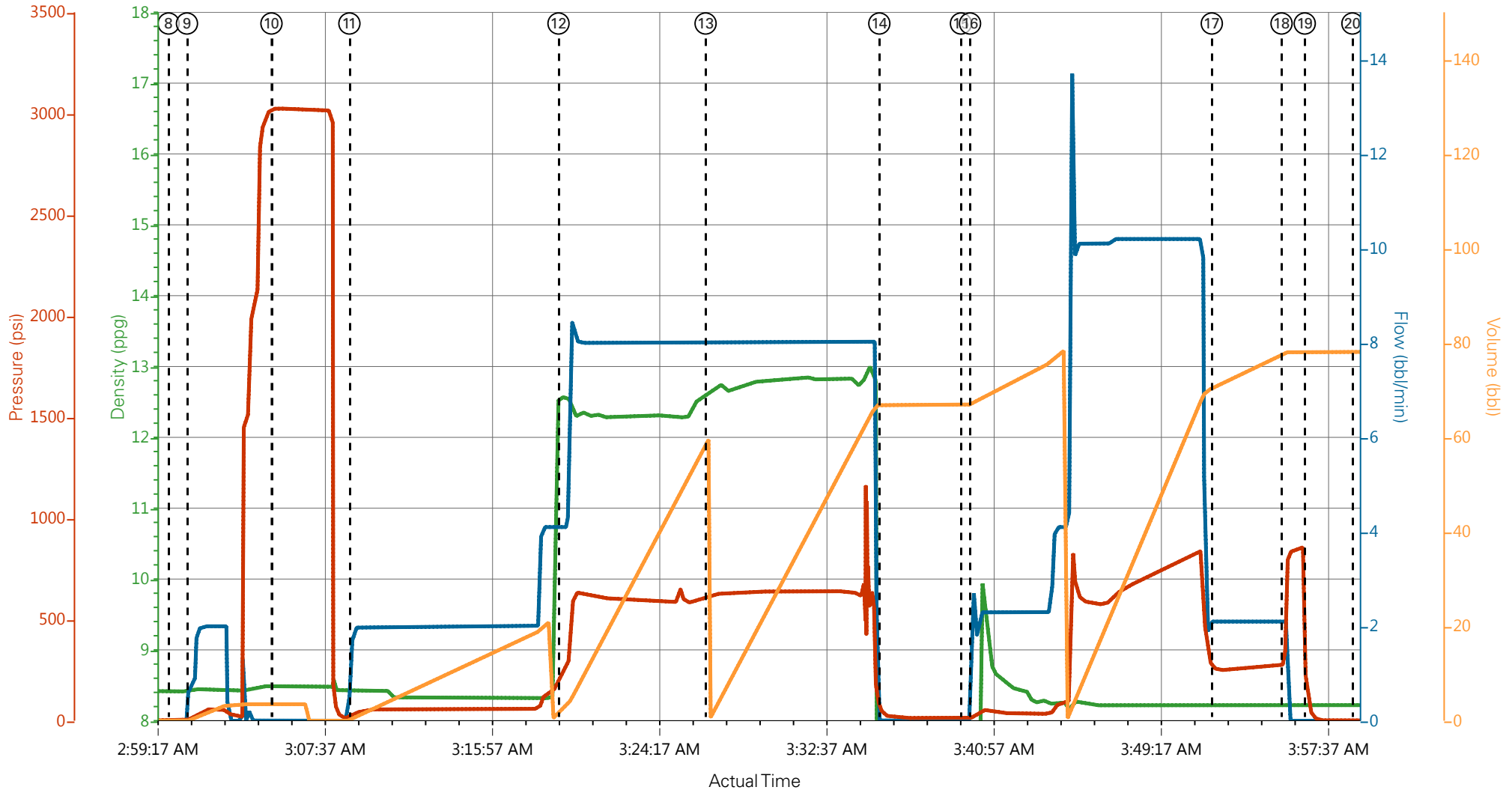
## 1.0 Real-Time Job Summary

### 1.1 Job Event Log

Type	Seq. No.	Graph Label	Date	Time	Source	DH Density <i>(ppg)</i>	Comb Pump Rate <i>(bbl/min)</i>	PS Pump Press <i>(psi)</i>	Pump Stg Tot <i>(bbl)</i>	Comments
Event	1	Call Out	11/4/2017	16:00:00	USER					
Event	2	Pre-Convoy Safety Meeting	11/4/2017	20:00:00	USER					WILL ALL HES PERSONNEL
Event	3	Crew Leave Yard	11/4/2017	20:10:00	USER					
Event	4	Arrive At Loc	11/4/2017	21:30:00	USER					RIG PULLING PIPE, CMT RIGGED UP LINES AND PRIMED UP PUMP
Event	5	Assessment Of Location Safety Meeting	11/4/2017	21:40:00	USER					WITH ALL HES PERSONNEL
Event	6	Pre-Rig Up Safety Meeting	11/4/2017	22:00:00	USER					WITH ALL HES PERSONNEL
Event	7	Pre-Job Safety Meeting	11/5/2017	02:30:00	USER					WITH ALL ON LOCATION PERSONNEL
Event	8	Start Job	11/5/2017	03:00:00	COM5					TP-1130, 32.3 #, TD-1140, S.J.-44.2, HOLE-13.5,
Event	9	Prime Pumps	11/5/2017	03:00:54	COM5					FRESH WATER
Event	10	Test Lines	11/5/2017	03:05:07	COM5	8.48	0.00	3025.00	3.5	3025 PSI
Event	11	Pump Spacer 1	11/5/2017	03:09:00	COM5	8.33	4.0	150	20	FRESH WATER
Event	12	Pump Lead Cement	11/5/2017	03:19:25	COM5	12.3	8.0	600	52.9	125 SKS, 12.3 PPG, 2.38 FT3/SK, 13.77 GAL/SK,
Event	13	Pump Tail Cement	11/5/2017	03:26:45	COM5	12.80	8.00	613.00	65.7	175 SKS, 12.8 PPG, 2.11 FT3/SK, 11.78 GAL/SK
Event	14	SHUTDOWN	11/5/2017	03:35:25	COM5					SHUTDOWN
Event	15	Drop Top Plug	11/5/2017	03:39:29	COM5					AWAY
Event	16	Pump Displacement	11/5/2017	03:39:56	COM5	8.33	10	840	85.4	FRESH WATER, 12 BBLS CMT TO SURFACE, GOOD CIRCULATION THROUGH OUT JOB. NO PIPE MOVEMENT

Event	17	SLOW RATE	11/5/2017	03:51:59	COM5	8.33	2.10	256.00	75	SLOW RATE TO BUMP PLUG
Event	18	Bump Plug	11/5/2017	03:55:28	COM5	8.33	2.10	270	85.4	PLUG BUMPED
Event	19	Check Floats	11/5/2017	03:56:37	USER			857		FLOATS HELD 0.5 BBLs BACK TO TRUCK
Event	20	End Job	11/5/2017	03:59:00	COM5					THANK YOU FOR USING HALLIBURTON CEMENT, JAMES LEIST AND CREW
Event	21	Post-Job Safety Meeting (Pre Rig-Down)	11/5/2017	04:10:00	USER					WITH ALL HES PERSONNEL
Event	22	Rig Down Lines	11/5/2017	04:20:00	USER					
Event	23	Pre-Convoy Safety Meeting	11/5/2017	05:00:00	USER					WITH ALL HES PERSONNEL
Event	24	Crew Leave Location	11/5/2017	05:30:00	USER					

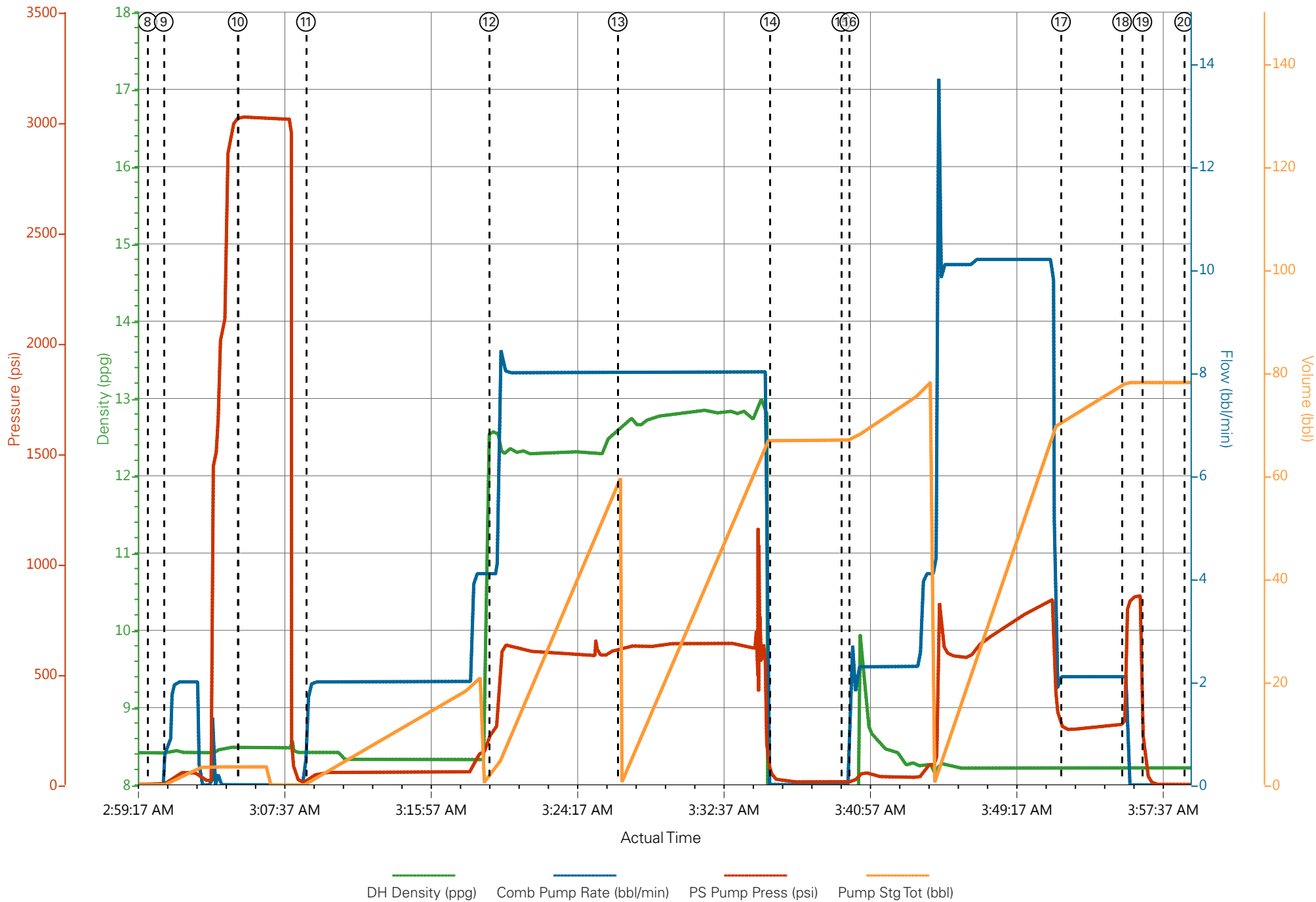
# TEP HP 271 PA 43-26 9 5/8 SURFACE CASING



— DH Density (ppg)    
 — Comb Pump Rate (bbl/min)    
 — PS Pump Press (psi)    
 — Pump Stg Tot (bbl)

- |   |                          |                     |  |
|---|--------------------------|---------------------|--|
| ① Call Out                              | ⑦ Pre-Job Safety Meeting | ⑬ Pump Tail Cement  | ⑰ Check Floats                           |
| ② Pre-Convoy Safety Meeting             | ⑧ Start Job              | ⑭ SHUTDOWN          | ⑳ End Job                                |
| ③ Crew Leave Yard                       | ⑨ Prime Pumps            | ⑮ Drop Top Plug     | ㉑ Post-Job Safety Meeting (Pre Rig-Down) |
| ④ Arrive At Loc                         | ⑩ Test Lines             | ⑯ Pump Displacement | ㉒ Rig Down Lines                         |
| ⑤ Assessment Of Location Safety Meeting | ⑪ Pump Spacer 1          | ⑰ SLOW RATE         | ㉓ Pre-Convoy Safety Meeting              |
| ⑥ Pre-Rig Up Safety Meeting             | ⑫ Pump Lead Cement       | ⑱ Bump Plug         | ㉔ Crew Leave Location                    |

TEP HP 271 PA 43-26 9 5/8 SURFACE CASING



DH Density (ppg) Comb Pump Rate (bbl/min) PS Pump Press (psi) Pump Stg Tot (bbl)