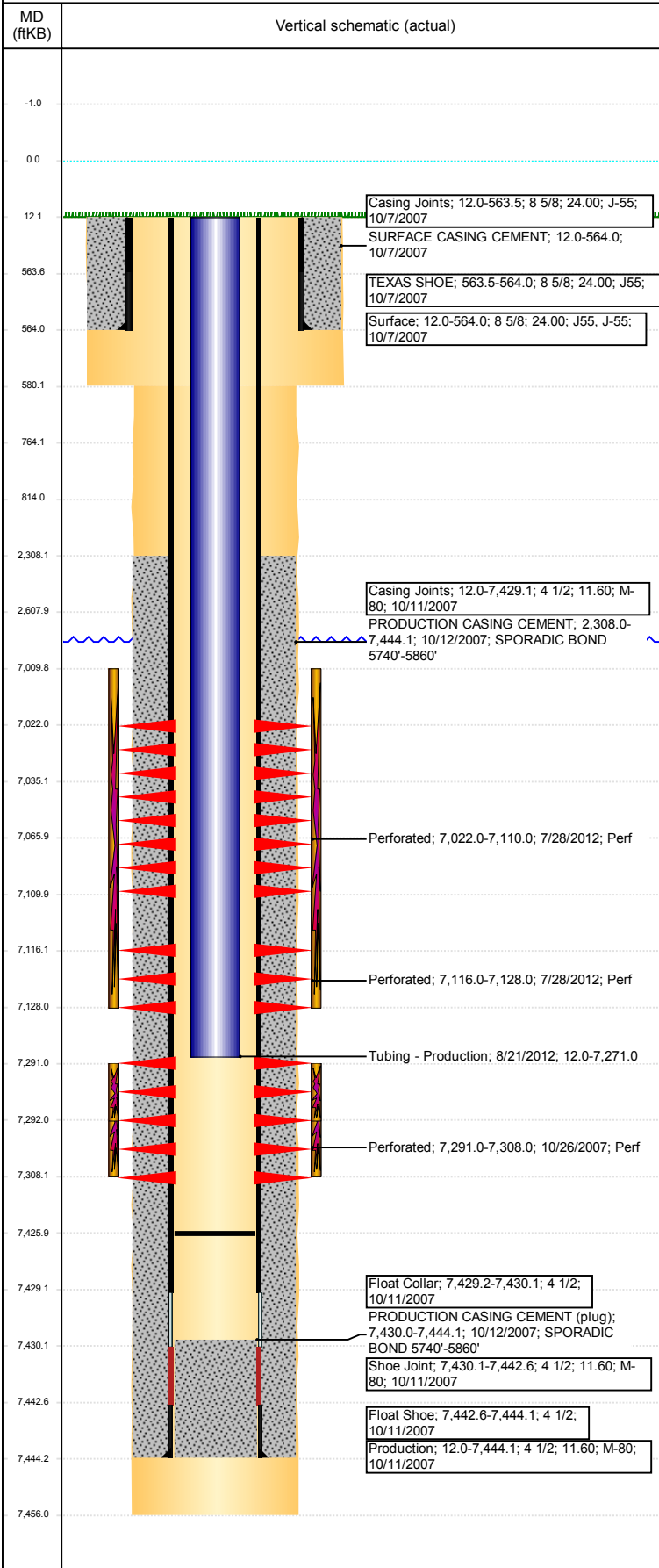


**Well Name: MONTERA I11-11**

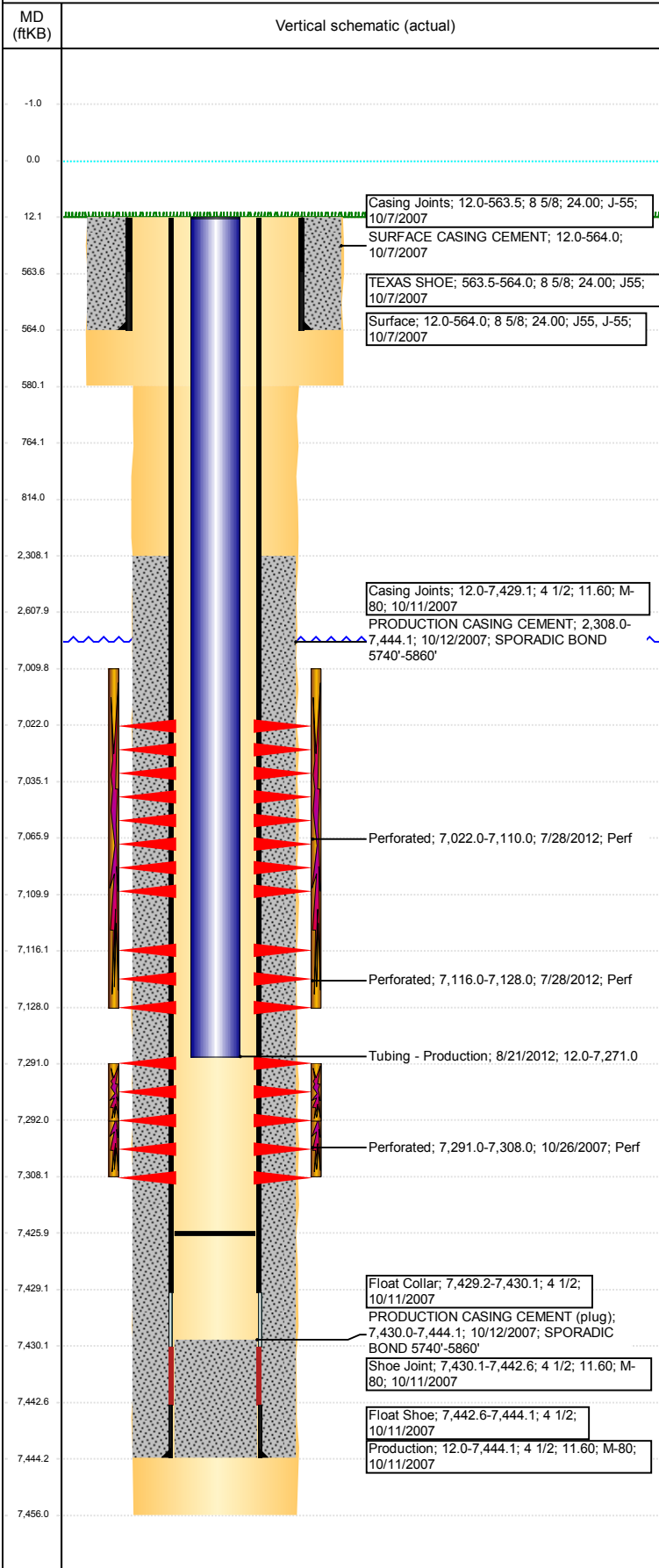
VERTICAL - ORIGINAL HOLE, 2/1/2018 10:27:21 AM



Well Header					
API	05-123-25973	Business Unit	DJ BASIN	District	15
Original KB Elevation (ft)	4,858	KB - GL / MSL (ftKB)	12.00	Spud Date	10/6/2007
Well Config	VERTICAL				
Comment	P & A Date				
Directions To Well					
CR 35 & CR 70 WEST .5 NORTH .4 INTO					
Congressional Location					
Quarter 3	Quarter 4	Section	Township	Twntshp N/S Dir	Range
NE	SW	11	6	N	66
Range E/W Dir	W				
Bottom Hole Location					
North-South Distance (ft)	From N or S Line	East-West Distance (ft)	From E or W Line		
Plug Back Total Depths					
Date	Depth (ftKB)	Method	Com		
10/11/2007	7,430.0	CASING TALLY	FLOAT COLLAR		
10/26/2007	7,413.0	CASED HOLE LOG	DEPTH LOGGER ON CBL		
8/21/2012	7,425.7	TAG			
Wellbore Sections					
Section Des	Size (in)	Act Top, MD (ftKB)	Act Btm, MD (ftKB)		
SURFACE	12 1/4	12	580		
PRODUCTION	7 7/8	580	7,456		
Zone Statuses					
Zone Name	Status Date	Status	Fluid Type	Job	Prod Method
NIOBRARA	7/31/2012	PR		RE-FRAC & R...	
CODELL	12/21/2007	PR		DRILLING/CO...	
CODELL	7/31/2012	PR		RE-FRAC & R...	
Casing Strings					
Surface, 564.0ftKB					
Casing Description	Run Date	OD (in)	Wt/Len (l...)	Grade	Top, MD (ft...)
Surface	10/7/2007	8 5/8	24.00	J-55	12.0
MD (ftKB)	564.0				
Production, 7,444.2ftKB					
Casing Description	Run Date	OD (in)	Wt/Len (l...)	Grade	Top, MD (ft...)
Production	10/11/2007	4 1/2	11.60	M-80	12.0
MD (ftKB)	7,444.2				
Cement					
Description	Top Depth (ftKB)	Bottom Depth (ftKB)			
SURFACE CASING CEMENT	12.0	564.0			
PRODUCTION CASING CEMENT	2,308.0	7,444.2			
Balance Plug	2,308.0	2,608.0			
Shoe Plug	764.0	814.0			
Shoe Plug	12.0	764.0			
Tubing Strings					
Tubing Description	Run Date	String...	ID (in)	Wt (lb/ft)	Grade
Tubing - Production	10/29/2007	7	2 3/8	4.70	J-55
Len (ft)	7,266.00				
Set De...	00				
Tubing Components					
Item Des	OD (in)	Wt (lb/ft)	Grade	Jts	Len (ft)
EUE 8rd Tubing	2 3/8	4.70	J-55	226	7,266.00
Btm (ftKB)	7,278.0				
Tubing Description	Run Date	String...	ID (in)	Wt (lb/ft)	Grade
Tubing - Production	8/21/2012	7	2 3/8	4.70	J-55
Len (ft)	7,259.04				
Set De...	04				
Tubing Components					
Item Des	OD (in)	Wt (lb/ft)	Grade	Jts	Len (ft)
Pup Joint	2 3/8	4.70	J-55	1	10.00
Tubing	2 3/8	4.70	J-55	235	7,247.44
Btm (ftKB)	7,269.4				
Pump Seating	2 3/8	1.10	J-55	1	1.20
Nipple					
Notched collar	2 3/8			1	0.40
Btm (ftKB)	7,271.0				
Other In Hole					
Run Date	Des	OD (in)	Top (ftKB)	Btm (ftKB)	
8/21/2012	Cast Iron Bridge Plug w/ 2 SX Cement	3.99	7,035.0	7,066.0	

Well Name: **MONTERA I11-11**

VERTICAL - ORIGINAL HOLE, 2/1/2018 10:27:22 AM



Logs				
Date	Type	Top, MD (ftKB)	Btm, MD (ftKB)	
10/11/2007	COMPENSATED DENSITY	564.0	7,449.0	
10/11/2007	INDUCTION	564.0	7,449.0	
10/26/2007	CBL/CCL/GR	564.0	7,449.0	
8/17/2017	GYRO	0.0	7,100.0	

Perforation Data					
Linked Zone	Bnch/St g	Sum of Entered Shot Total	Top (ftKB)	Btm (ftKB)	Date
NIORARA, ORIGINAL HOLE		24	7,022.00	7,110.00	7/28/2012
CODELL, ORIGINAL HOLE		24	7,116.00	7,128.00	7/28/2012
CODELL, ORIGINAL HOLE		68	7,291.00	7,308.00	10/26/2007
<b>Total (Sum)</b>		<b>116</b>			

Stimulation Intervals		
Start Date	Primary Job Type	
10/31/2007	DRILLING/COMPLETION - ORIGINAL	
Technical Result	Tech Result Details	Tech Result Note
Comment		

Start Date	Primary Job Type	
7/28/2012	RE-FRAC & RECOMPLETE	
Technical Result	Tech Result Details	Tech Result Note
Success	According to Plan	
Comment (CRF):X-LINK WAS 10 SEC FLUIDS LOOKED GOOD. TREATED GOOD. 5 MIN SIP 2402		

Start Date	Primary Job Type	
7/28/2012	RE-FRAC & RECOMPLETE	
Technical Result	Tech Result Details	Tech Result Note
Comment (CRF):X-LINK WAS 10 SEC FLUIDS LOOKED GOOD. TREATED GOOD. 5 MIN SIP 2402		

Start Date	Primary Job Type	
7/28/2012	RE-FRAC & RECOMPLETE	
Technical Result	Tech Result Details	Tech Result Note
Success	According to Plan	
Comment (NRC):LOST ALL DENSITY ON 4# SAND WENT TO FLUSH 50000 SHORT.JOB TREATED GOOD. 5 MIN SIP 3636		