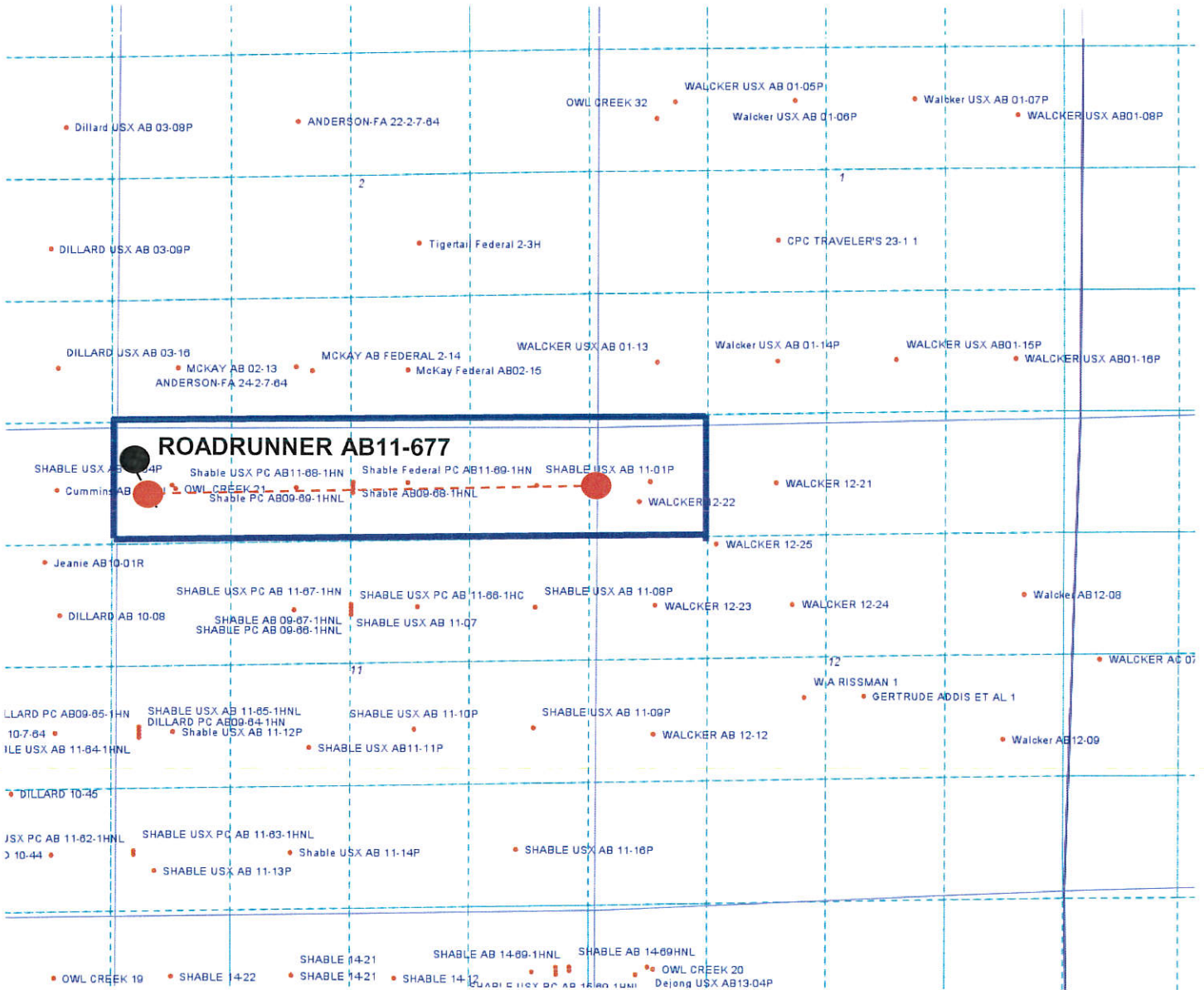


# Roadrunner AB11-677

## Proposed Spacing Unit – Noble Energy, Inc

N/2N/2 Section 11, Township 7 North, Range 64 West  
NW/4NW/4 Section 12, Township 7 North, Range 64 West



### Legend



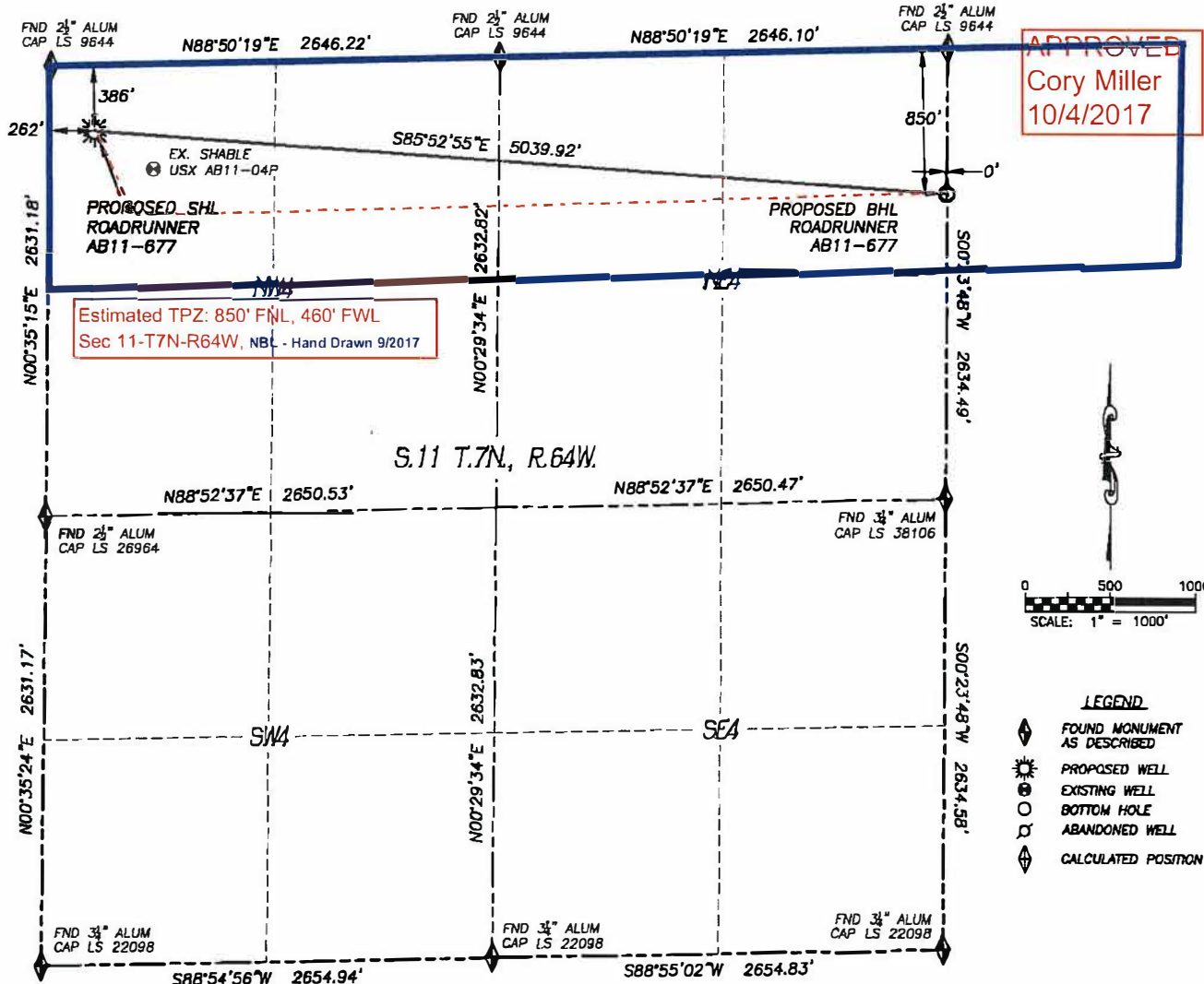
Proposed 200.00± acre spacing unit



Bottom Hole Location

DALEY LAND SURVEYING, INC. 970.302.4159  
**WELL LOCATION CERTIFICATE**  
**ROADRUNNER AB11-677**

SECTION: 11  
 TOWNSHIP: 7N  
 RANGE: 64W



IN ACCORDANCE WITH A REQUEST FROM CODY BALL OF NOBLE ENERGY INC., DALEY LAND SURVEYING, INC. HAS DETERMINED THE SURFACE LOCATION OF THE ROADRUNNER AB11-677 WELL TO BE 386' FNL, 262' FWL, AND THE BOTTOM HOLE LOCATION TO BE 850' FNL, 0' FEL, AS MEASURED AT NINETY (90) DEGREES FROM THE SECTION LINES OF SECTION 11, TOWNSHIP 7 NORTH, RANGE 64 WEST, OF THE 6TH PRINCIPAL MERIDIAN, WELD COUNTY, COLORADO.

I HEREBY STATE THAT THIS WELL LOCATION CERTIFICATE WAS PREPARED BY ME OR UNDER MY DIRECT SUPERVISION, THAT THE WORK WAS COMPLETED ON 11/10/2016 FOR AND ON BEHALF OF NOBLE ENERGY, INC., AND THAT THIS MAP DOES NOT REPRESENT A BOUNDARY SURVEY, IT IS NOT A LAND SURVEY PLAT OR AN IMPROVEMENT SURVEY PLAT AND IT IS NOT TO BE RELIED UPON FOR THE ESTABLISHMENT OF FENCE, BUILDING OR OTHER FUTURE IMPROVEMENT LINES.

**NOTES:**

- 1) BEARINGS FOR THIS MAP ARE ASSUMED AND BASED UPON GPS OBSERVATIONS MADE BETWEEN MONUMENTS LOCATED AT THE NORTHWEST CORNER AND WEST QUARTER CORNER OF SECTION 11, T.7N., R.64W.
- 2) HORIZONTAL DATUM IS NAD83.
- 3) VERTICAL DATUM IS NAVD88 AND ORIGINATES FROM THE LOCAL C.O.R.S. NETWORK, UTILIZING THE GEOID12A MODEL.
- 4) SEE LOCATION DRAWING FOR VISIBLE IMPROVEMENTS WITHIN 500' OF PROPOSED DISTURBED AREA.
- 5) SURFACE USE: AGRICULTURAL.
- 6) INST. OPERATOR: TREVOR DALEY
- 7) NEAREST WELL: 408'± SE. - SHABLE USX AB11-04P

**NEAREST CULTURAL ITEMS:**

BUILDING: 5280'+  
 BUILDING UNIT: 5280'+  
 HIGH OCC. BLD. UNIT: 5280'+  
 DES. OUTSIDE ACTIVITY AREA: 5280'+  
 PUBLIC ROAD: 5280'+  
 ABOVE GROUND UTILITY: 348'± NE  
 RAILROAD: 5280'+  
 PROPERTY LINE: 262'± W

**NAD 83 LATITUDE AND LONGITUDE**

SURFACE LOCATION:		BOTTOM HOLE:	
LATITUDE:	N40.59382°	LATITUDE:	N40.59267°
LONGITUDE:	W104.52483°	LONGITUDE:	W104.50675°
ELEV:	4851'		
PDOP:	1.6		
QTR/QTR:	NW4/NW4		



SHEET 1 OF 1

Drawing Date: 9/15/17