

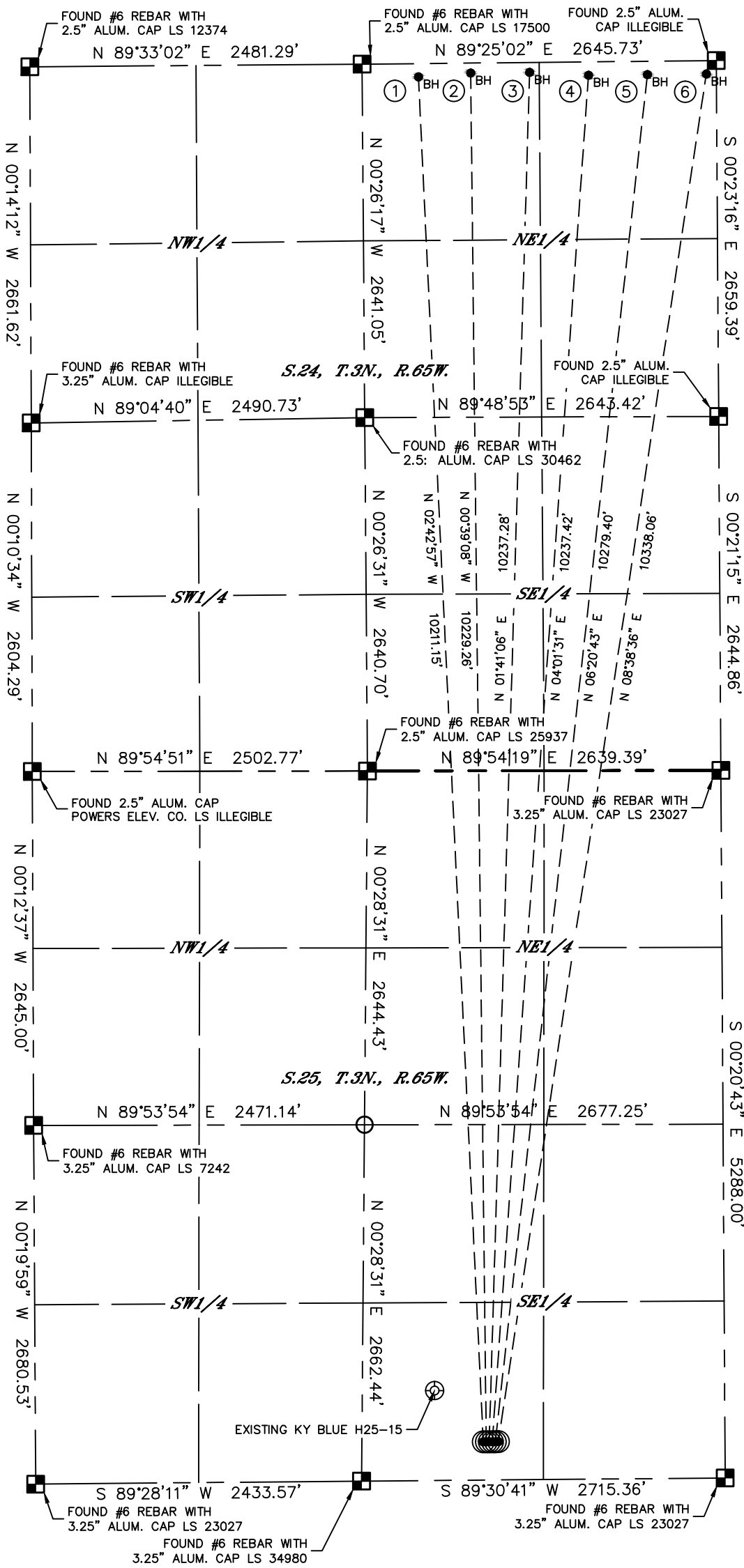


MULTI-WELL PLAN

H25-15 PAD

THIS MAP DOES NOT REPRESENT A BOUNDARY SURVEY

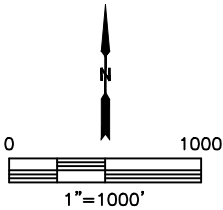
SECTION: 25  
TOWNSHIP: 3N  
RANGE: 65W  
6TH. P.M.  
WELD COUNTY, CO



LEGEND

- = ALIQUOT MONUMENT AS DESCRIBED
- = CALCULATED POSITION
- = SURFACE HOLE LOCATION (SHL)
- ▲ = ENTRY POINT LOCATION (EP)
- = BOTTOM HOLE LOCATION (BHL)
- ⊙ = EXISTING WELL
- ⊙ = ABANDONED WELL

#	WELL NAME	BHL FOOTAGE				BHL LAT °	BHL LONG °	BHL S-T-R
1	EMMY STATE H25-744	100	FNL	2225	FEL	40.21767	-104.61063	24-3-65
2	EMMY STATE H25-738	75	FNL	1835	FEL	40.21774	-104.60924	24-3-65
3	EMMY STATE H25-731	75	FNL	1395	FEL	40.21774	-104.60766	24-3-65
4	EMMY STATE H25-724	100	FNL	955	FEL	40.21767	-104.60609	24-3-65
5	EMMY STATE H25-718	100	FNL	515	FEL	40.21767	-104.60451	24-3-65
6	EMMY H25-711	100	FNL	75	FEL	40.21767	-104.60294	24-3-65





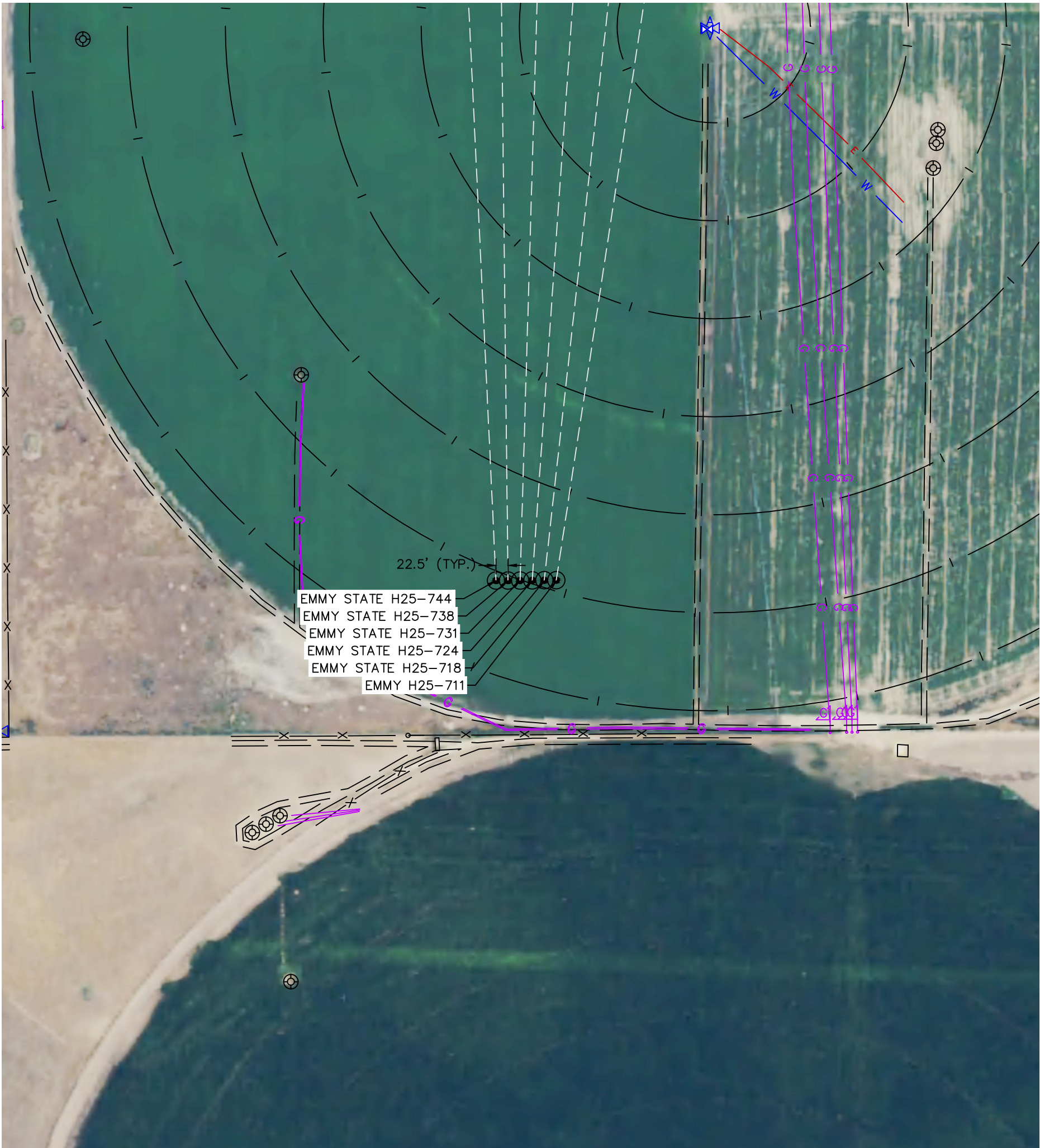
Lat40°, Inc. 6250 W. 10th Street, Unit 2, Greeley, CO 970-515-5294

MULTI-WELL PLAN

H25-15 PAD

THIS MAP DOES NOT REPRESENT A BOUNDARY SURVEY

SECTION: 25  
TOWNSHIP: 3N  
RANGE: 65W  
6TH. P.M.  
WELD COUNTY, CO



#	WELL NAME	SHL FOOTAGE				SHL LAT °	SHL LONG °	SHL PDOP	SHL ELEV (FT.)	SHL 1/4/1/4	SHL S-T-R
1	EMMY STATE H25-744	285	FSL	1805	FEL	40.18967	-104.60927	1.8	4805	SWSE	25-3-65
2	EMMY STATE H25-738	285	FSL	1782	FEL	40.18967	-104.60919	1.7	4805	SWSE	25-3-65
3	EMMY STATE H25-731	285	FSL	1760	FEL	40.18967	-104.60911	1.7	4804	SWSE	25-3-65
4	EMMY STATE H25-724	285	FSL	1737	FEL	40.18967	-104.60903	1.6	4805	SWSE	25-3-65
5	EMMY STATE H25-718	285	FSL	1715	FEL	40.18967	-104.60895	1.6	4805	SWSE	25-3-65
6	EMMY H25-711	285	FSL	1693	FEL	40.18967	-104.60887	1.7	4805	SWSE	25-3-65

