



SRC ENERGY

**Operator:** The Termo Company  
**Well Name:** Swanson 1  
**Legal:** SWNW, Section 28, Township 6N, Range 66W  
**Location:** Weld County, CO  
**API:** 05-123-10193

Deepest Water Well  
Within 1 Mile = 300'

### Wellbore History

Spud Date: 3/3/1981  
Surf Csg: 9.625", 36# @ 213' – 150 sx  
Prod Csg: 5.5", 15.5#/17# @ 7798' – 275 sx  
S.C. 1.1: 4580'-4898' – 150 sx  
TOC: 5973' (CALC) & 4580' (CBL)  
Perfs: JSND: 7556'-7562' (AB after frac)  
NBRR: 6902'-7039' (AB after frac)  
SNSD: 4702'-4722'





### Previous P&A Procedure

Set CIBP @ 4650' and dump bail 1 sx on top  
Cut 5-1/2" casing @ 4100'  
Set 40 sx @ 225' (~109' plug)  
Set 5 sx @ 32' (~13' plug)

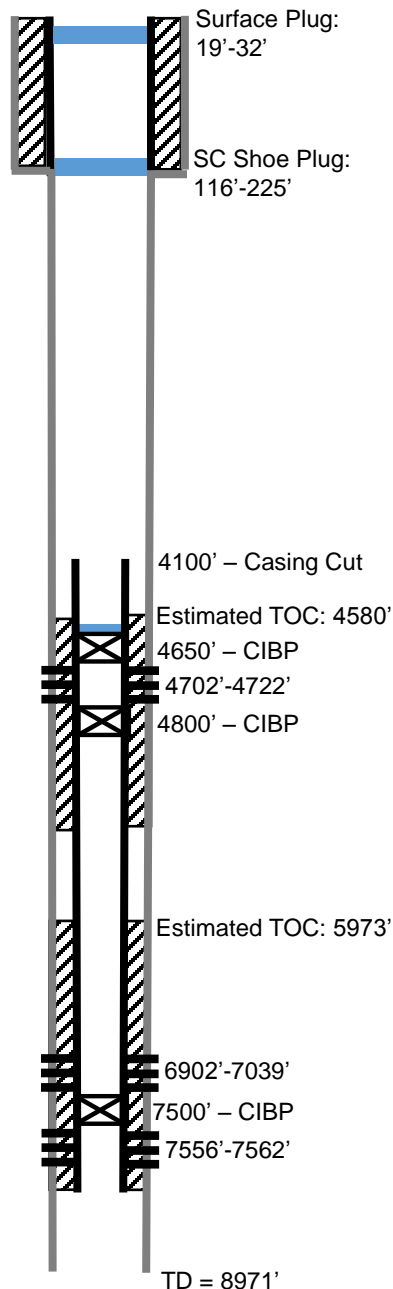
### Proposed P&A Procedure

Mill cmt in surf csg (btm of cmt ~ 225')  
Set 184 sx @ 4150' (500' plug)  
WOC 4 hours and tag plug  
Set 184 sx @ 2500' (250' plug)  
WOC 4 hours and tag plug  
Set 237 sx @ 613' to surface

### Key

-  Existing Cement Coverage
-  CICR
-  Cement Pumped
-  CIBP

### Current



### Proposed

