

# PDC Energy Inc. DJ Basin

Well Name: **Wiedeman Federal 22H-332**

Surface Location: Wiedeman Federal 4N66W22G PAD Sec.22-T4N-R66W  
North American Datum 1983 , US State Plane 1983, Colorado Northern Zone

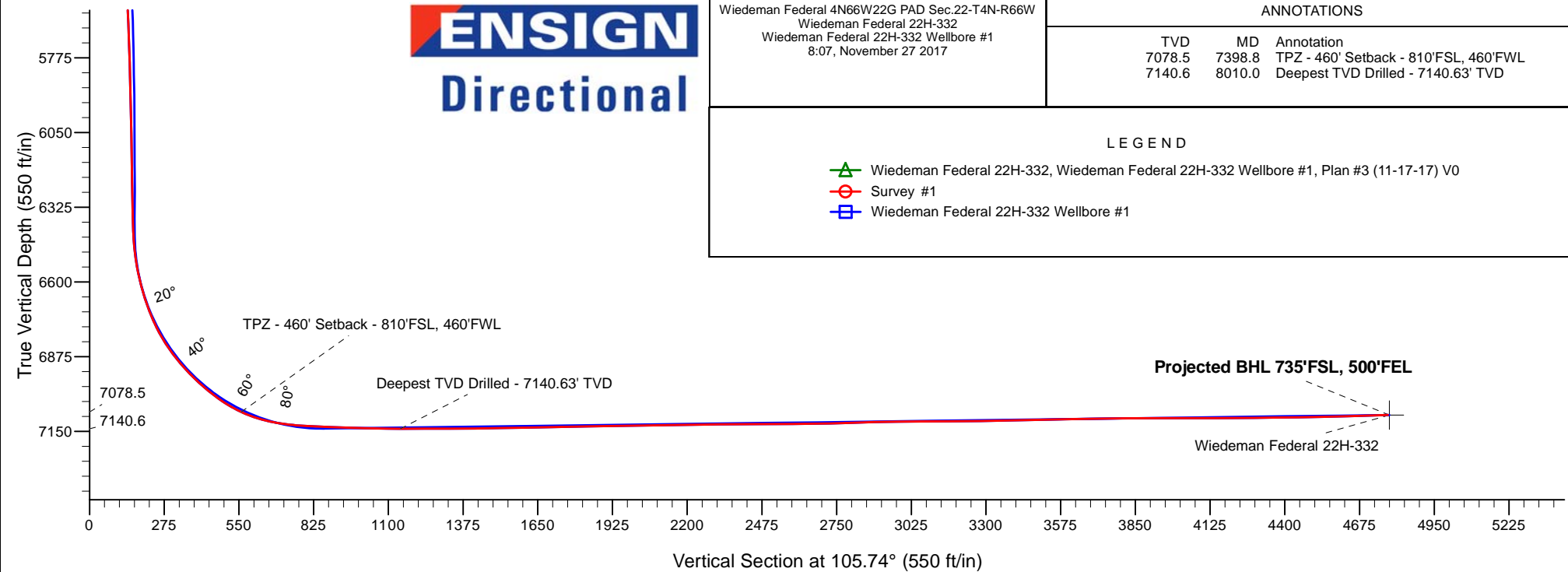
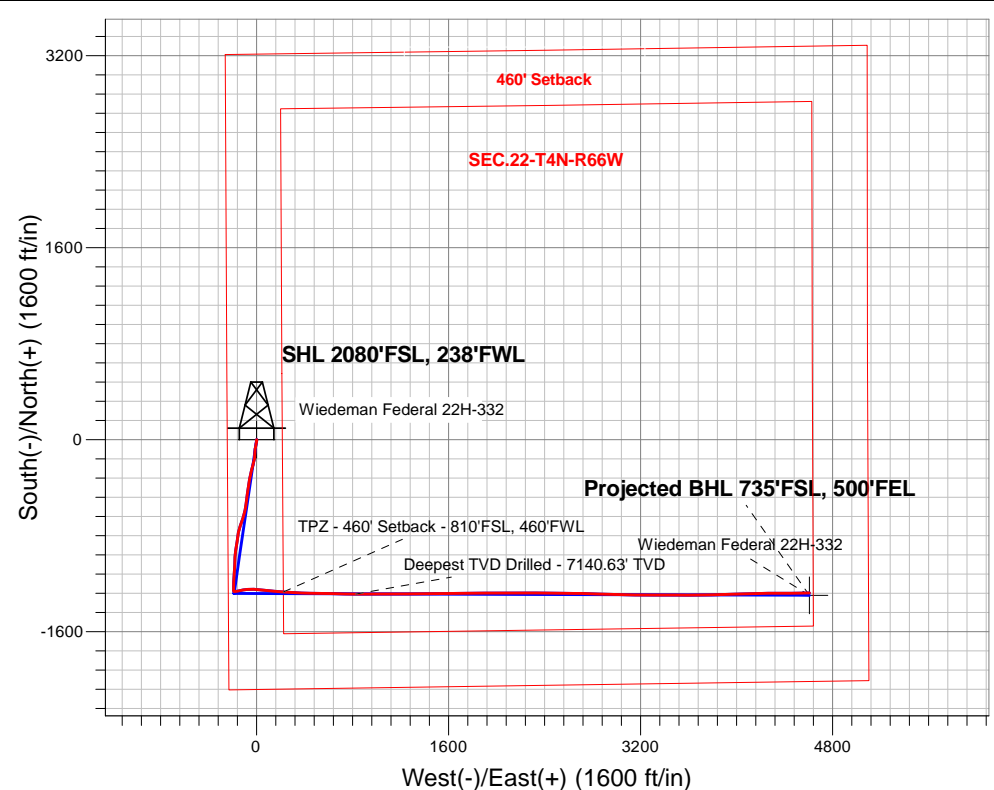
Ground Elevation: 4738.0

+N/-S+E/-W Northing Easting Latitude Longitude Slot  
0.0 0.0 1351365.573202996.84 40.295612 -104.772246

Ensign Rig #152 - RKB - 23'WELL @ 4761.0ft (Ensign Rig #152 - RKB - 23')

## FINAL SURVEY

**Projected Bottom Hole Location**  
**11,791'MD 7090'TVD 1278'S & 4606'E of SHL**  
**91.8 degree Incl @ 88.9 degree AZM**



Wiedeman Federal 4N66W22G PAD Sec.22-T4N-R66W  
Wiedeman Federal 22H-332  
Wiedeman Federal 22H-332 Wellbore #1  
8:07, November 27 2017

### ANNOTATIONS

TVD	MD	Annotation
7078.5	7398.8	TPZ - 460' Setback - 810'FSL, 460'FWL
7140.6	8010.0	Deepest TVD Drilled - 7140.63' TVD

### LEGEND

- Wiedeman Federal 22H-332, Wiedeman Federal 22H-332 Wellbore #1, Plan #3 (11-17-17) V0
- Survey #1
- Wiedeman Federal 22H-332 Wellbore #1



## **PDC Energy Inc. DJ Basin**

**SEC.22-T4N-R66W**

**Wiedeman Federal 4N66W22G PAD Sec.22-T4N-R66W**

**Wiedeman Federal 22H-332**

**Wiedeman Federal 22H-332 Wellbore #1**

**Survey: Survey #1**

## **Standard Survey Report**

**27 November, 2017**

<b>Company:</b>	PDC Energy Inc. DJ Basin	<b>Local Co-ordinate Reference:</b>	Well Wiedeman Federal 22H-332
<b>Project:</b>	SEC.22-T4N-R66W	<b>TVD Reference:</b>	WELL @ 4761.0ft (Ensign Rig #152 - RKB - 23')
<b>Site:</b>	Wiedeman Federal 4N66W22G PAD Sec.22-T4N-R66W	<b>MD Reference:</b>	WELL @ 4761.0ft (Ensign Rig #152 - RKB - 23')
<b>Well:</b>	Wiedeman Federal 22H-332	<b>North Reference:</b>	True
<b>Wellbore:</b>	Wiedeman Federal 22H-332 Wellbore #1	<b>Survey Calculation Method:</b>	Minimum Curvature
<b>Design:</b>	Wiedeman Federal 22H-332 Wellbore #1	<b>Database:</b>	US_EDM

<b>Project</b>	SEC.22-T4N-R66W, Weld County, Colorado		
<b>Map System:</b>	US State Plane 1983	<b>System Datum:</b>	Mean Sea Level
<b>Geo Datum:</b>	North American Datum 1983		Using Well Reference Point
<b>Map Zone:</b>	Colorado Northern Zone		Using geodetic scale factor

Site	Wiedeman Federal 4N66W22G PAD Sec.22-T4N-R66W				
Site Position:		Northing:	1,351,350.65 usft	Latitude:	40.295571
From:	Lat/Long	Easting:	3,202,996.97 usft	Longitude:	-104.772246
Position Uncertainty:	0.0 ft	Slot Radius:	13-3/16 "	Grid Convergence:	0.47 °

Well	Wiedeman Federal 22H-332					
Well Position	+N/-S	0.0 ft	Northing:	1,351,365.57 usft	Latitude:	40.295612
	+E/-W	0.0 ft	Easting:	3,202,996.84 usft	Longitude:	-104.772246
Position Uncertainty		0.0 ft	Wellhead Elevation:	0.0 ft	Ground Level:	4,738.0 ft

<b>Wellbore</b>	Wiedeman Federal 22H-332 Wellbore #1				
<b>Magnetics</b>	<b>Model Name</b>	<b>Sample Date</b>	<b>Declination (°)</b>	<b>Dip Angle (°)</b>	<b>Field Strength (nT)</b>
	IGRF2010	10/3/2017	8.01	66.74	52,413

<b>Design</b>	Wiedeman Federal 22H-332 Wellbore #1				
<b>Audit Notes:</b>					
<b>Version:</b>	1.0	<b>Phase:</b>	ACTUAL	<b>Tie On Depth:</b>	0.0
<b>Vertical Section:</b>	<b>Depth From (TVD) (ft)</b>	<b>+N/-S (ft)</b>	<b>+E/-W (ft)</b>	<b>Direction (°)</b>	
	0.0	0.0	0.0	105.74	

<b>Survey Program</b>	<b>Date</b>	11/27/2017			
<b>From (ft)</b>	<b>To (ft)</b>	<b>Survey (Wellbore)</b>	<b>Tool Name</b>	<b>Description</b>	
154.0	11,791.0	Survey #1 (Wiedeman Federal 22H-332 W	MWD	MWD - Standard	

<b>Survey</b>										
<b>Measured Depth (ft)</b>	<b>Inclination (°)</b>	<b>Azimuth (°)</b>	<b>Vertical Depth (ft)</b>	<b>+N/-S (ft)</b>	<b>+E/-W (ft)</b>	<b>Vertical Section (ft)</b>	<b>Dogleg Rate (°/100usft)</b>	<b>Build Rate (°/100usft)</b>	<b>Turn Rate (°/100usft)</b>	
0.0	0.00	0.00	0.0	0.0	0.0	0.0	0.00	0.00	0.00	
1.0	0.00	130.00	1.0	0.0	0.0	0.0	0.00	0.00	0.00	
<b>SHL 2080'FSL, 238'FWL</b>										
154.0	0.20	130.00	154.0	-0.2	0.2	0.2	0.13	0.13	0.00	
250.0	0.40	126.80	250.0	-0.5	0.6	0.7	0.21	0.21	-3.33	
345.0	0.30	96.40	345.0	-0.7	1.1	1.3	0.22	-0.11	-32.00	
441.0	0.00	199.60	441.0	-0.7	1.4	1.5	0.31	-0.31	0.00	
537.0	0.70	213.50	537.0	-1.2	1.0	1.3	0.73	0.73	0.00	
633.0	1.40	180.30	633.0	-2.9	0.7	1.5	0.94	0.73	-34.58	
729.0	3.20	189.00	728.9	-6.7	0.3	2.1	1.90	1.88	9.06	

<b>Company:</b>	PDC Energy Inc. DJ Basin	<b>Local Co-ordinate Reference:</b>	Well Wiedeman Federal 22H-332
<b>Project:</b>	SEC.22-T4N-R66W	<b>TVD Reference:</b>	WELL @ 4761.0ft (Ensign Rig #152 - RKB - 23')
<b>Site:</b>	Wiedeman Federal 4N66W22G PAD Sec.22-T4N-R66W	<b>MD Reference:</b>	WELL @ 4761.0ft (Ensign Rig #152 - RKB - 23')
<b>Well:</b>	Wiedeman Federal 22H-332	<b>North Reference:</b>	True
<b>Wellbore:</b>	Wiedeman Federal 22H-332 Wellbore #1	<b>Survey Calculation Method:</b>	Minimum Curvature
<b>Design:</b>	Wiedeman Federal 22H-332 Wellbore #1	<b>Database:</b>	US_EDM

Survey										
Measured Depth (ft)	Inclination (°)	Azimuth (°)	Vertical Depth (ft)	+N/-S (ft)	+E/-W (ft)	Vertical Section (ft)	Dogleg Rate (°/100usft)	Build Rate (°/100usft)	Turn Rate (°/100usft)	
824.0	4.30	181.30	823.7	-12.9	-0.2	3.3	1.27	1.16	-8.11	
920.0	5.80	191.30	919.3	-21.2	-1.2	4.6	1.81	1.56	10.42	
1,016.0	6.90	191.00	1,014.7	-31.7	-3.3	5.4	1.15	1.15	-0.31	
1,111.0	8.60	189.40	1,108.9	-44.3	-5.5	6.7	1.80	1.79	-1.68	
1,207.0	9.20	192.20	1,203.7	-58.9	-8.3	7.9	0.77	0.63	2.92	
1,303.0	10.70	188.30	1,298.3	-75.2	-11.2	9.6	1.71	1.56	-4.06	
1,399.0	11.30	185.90	1,392.5	-93.3	-13.5	12.3	0.79	0.63	-2.50	
1,494.0	10.90	183.40	1,485.7	-111.6	-15.0	15.8	0.66	-0.42	-2.63	
1,585.0	9.80	184.00	1,575.2	-127.9	-16.0	19.2	1.21	-1.21	0.66	
1,686.0	8.90	183.60	1,674.9	-144.3	-17.1	22.6	0.89	-0.89	-0.40	
1,781.0	10.80	188.40	1,768.5	-160.4	-18.9	25.3	2.18	2.00	5.05	
1,876.0	13.10	193.50	1,861.4	-179.7	-22.7	26.9	2.66	2.42	5.37	
1,971.0	14.30	194.00	1,953.7	-201.5	-28.1	27.6	1.27	1.26	0.53	
2,067.0	16.90	195.00	2,046.2	-226.5	-34.5	28.2	2.72	2.71	1.04	
2,162.0	15.70	193.80	2,137.4	-252.3	-41.2	28.8	1.31	-1.26	-1.26	
2,258.0	17.80	194.00	2,229.3	-279.2	-47.8	29.7	2.19	2.19	0.21	
2,354.0	16.80	191.70	2,320.9	-307.0	-54.2	31.1	1.26	-1.04	-2.40	
2,449.0	14.90	191.90	2,412.3	-332.4	-59.5	32.9	2.00	-2.00	0.21	
2,561.0	18.60	188.40	2,519.6	-364.2	-65.1	36.1	3.42	3.30	-3.13	
2,657.0	18.50	188.00	2,610.6	-394.4	-69.4	40.1	0.17	-0.10	-0.42	
2,752.0	18.60	187.70	2,700.6	-424.4	-73.6	44.3	0.15	0.11	-0.32	
2,848.0	18.50	187.80	2,791.6	-454.6	-77.7	48.5	0.11	-0.10	0.10	
2,943.0	16.60	187.50	2,882.2	-483.0	-81.5	52.5	2.00	-2.00	-0.32	
3,039.0	17.70	188.40	2,973.9	-511.0	-85.4	56.4	1.18	1.15	0.94	
3,134.0	16.40	187.30	3,064.8	-538.6	-89.2	60.2	1.41	-1.37	-1.16	
3,229.0	14.20	186.60	3,156.4	-563.5	-92.3	64.0	2.32	-2.32	-0.74	
3,325.0	15.60	193.30	3,249.2	-587.8	-96.6	66.4	2.31	1.46	6.98	
3,516.0	16.40	196.80	3,432.8	-638.6	-110.3	67.0	0.66	0.42	1.83	
3,612.0	14.50	196.60	3,525.3	-663.1	-117.6	66.6	1.98	-1.98	-0.21	
3,708.0	15.90	198.20	3,617.9	-687.1	-125.2	65.8	1.52	1.46	1.67	
3,803.0	15.90	197.30	3,709.3	-711.9	-133.1	64.9	0.26	0.00	-0.95	
3,899.0	15.70	197.50	3,801.7	-736.8	-140.9	64.2	0.22	-0.21	0.21	
3,995.0	15.50	197.50	3,894.1	-761.4	-148.7	63.4	0.21	-0.21	0.00	
4,091.0	18.40	188.70	3,986.0	-788.7	-154.9	64.8	4.03	3.02	-9.17	
4,187.0	18.00	187.50	4,077.2	-818.3	-159.1	68.8	0.57	-0.42	-1.25	
4,282.0	15.80	188.40	4,168.1	-845.7	-162.9	72.6	2.33	-2.32	0.95	
4,378.0	16.60	188.50	4,260.3	-872.2	-166.8	76.0	0.83	0.83	0.10	
4,474.0	16.30	188.20	4,352.3	-899.1	-170.8	79.4	0.32	-0.31	-0.31	
4,569.0	15.70	188.40	4,443.6	-925.0	-174.6	82.8	0.63	-0.63	0.21	
4,665.0	16.60	185.90	4,535.9	-951.5	-177.9	86.8	1.18	0.94	-2.60	
4,760.0	16.90	184.80	4,626.8	-978.7	-180.4	91.8	0.46	0.32	-1.16	
4,856.0	15.60	182.70	4,719.0	-1,005.5	-182.2	97.3	1.49	-1.35	-2.19	

<b>Company:</b>	PDC Energy Inc. DJ Basin	<b>Local Co-ordinate Reference:</b>	Well Wiedeman Federal 22H-332
<b>Project:</b>	SEC.22-T4N-R66W	<b>TVD Reference:</b>	WELL @ 4761.0ft (Ensign Rig #152 - RKB - 23')
<b>Site:</b>	Wiedeman Federal 4N66W22G PAD Sec.22-T4N-R66W	<b>MD Reference:</b>	WELL @ 4761.0ft (Ensign Rig #152 - RKB - 23')
<b>Well:</b>	Wiedeman Federal 22H-332	<b>North Reference:</b>	True
<b>Wellbore:</b>	Wiedeman Federal 22H-332 Wellbore #1	<b>Survey Calculation Method:</b>	Minimum Curvature
<b>Design:</b>	Wiedeman Federal 22H-332 Wellbore #1	<b>Database:</b>	US_EDM

Survey									
Measured Depth (ft)	Inclination (°)	Azimuth (°)	Vertical Depth (ft)	+N/-S (ft)	+E/-W (ft)	Vertical Section (ft)	Dogleg Rate (°/100usft)	Build Rate (°/100usft)	Turn Rate (°/100usft)
4,951.0	16.30	182.70	4,810.3	-1,031.6	-183.4	103.2	0.74	0.74	0.00
5,047.0	15.40	181.50	4,902.7	-1,057.8	-184.4	109.4	1.00	-0.94	-1.25
5,142.0	14.10	180.80	4,994.5	-1,082.0	-184.9	115.5	1.38	-1.37	-0.74
5,237.0	13.10	181.30	5,086.9	-1,104.3	-185.3	121.1	1.06	-1.05	0.53
5,333.0	13.20	185.50	5,180.4	-1,126.1	-186.6	125.8	1.00	0.10	4.38
5,428.0	12.00	185.50	5,273.1	-1,146.7	-188.6	129.5	1.26	-1.26	0.00
5,524.0	10.40	184.70	5,367.2	-1,165.3	-190.2	132.9	1.67	-1.67	-0.83
5,619.0	9.20	183.60	5,460.9	-1,181.4	-191.4	136.2	1.28	-1.26	-1.16
5,714.0	8.20	181.20	5,554.8	-1,195.8	-192.0	139.5	1.12	-1.05	-2.53
5,810.0	7.30	179.60	5,649.9	-1,208.7	-192.1	142.9	0.96	-0.94	-1.67
5,906.0	6.70	181.00	5,745.2	-1,220.4	-192.2	146.0	0.65	-0.63	1.46
6,001.0	5.50	177.50	5,839.6	-1,230.5	-192.1	148.8	1.32	-1.26	-3.68
6,097.0	4.80	181.70	5,935.2	-1,239.1	-192.0	151.2	0.83	-0.73	4.38
6,193.0	4.10	180.60	6,031.0	-1,246.6	-192.2	153.1	0.73	-0.73	-1.15
6,289.0	3.90	182.70	6,126.7	-1,253.3	-192.3	154.7	0.26	-0.21	2.19
6,385.0	3.00	175.20	6,222.5	-1,259.0	-192.3	156.4	1.05	-0.94	-7.81
6,480.0	2.60	175.00	6,317.4	-1,263.7	-191.9	158.0	0.42	-0.42	-0.21
6,576.0	2.30	106.80	6,413.4	-1,266.4	-189.9	160.7	2.87	-0.31	-71.04
6,672.0	8.40	82.50	6,508.9	-1,266.0	-181.1	169.1	6.64	6.35	-25.31
6,768.0	15.70	78.30	6,602.7	-1,262.5	-161.4	187.1	7.65	7.60	-4.38
6,863.0	22.40	78.10	6,692.5	-1,256.1	-131.0	214.5	7.05	7.05	-0.21
6,959.0	28.80	84.30	6,779.0	-1,250.1	-90.1	252.3	7.22	6.67	6.46
7,054.0	37.40	89.90	6,858.6	-1,247.7	-38.3	301.5	9.60	9.05	5.89
7,150.0	44.10	95.40	6,931.3	-1,250.8	24.2	362.5	7.91	6.98	5.73
7,246.0	50.10	97.00	6,996.6	-1,258.5	94.0	431.8	6.37	6.25	1.67
7,341.0	59.00	94.10	7,051.6	-1,265.8	171.0	507.9	9.69	9.37	-3.05
7,398.8	65.50	94.10	7,078.5	-1,269.5	222.0	557.9	11.25	11.25	0.00
TPZ - 460' Setback - 810'FSL, 460'FWL									
7,437.0	69.80	94.10	7,093.1	-1,272.0	257.2	592.5	11.25	11.25	0.00
7,533.0	80.20	92.70	7,117.9	-1,277.5	349.6	683.0	10.92	10.83	-1.46
7,628.0	86.50	90.60	7,128.9	-1,280.2	443.9	774.5	6.99	6.63	-2.21
7,720.3	87.85	91.18	7,133.4	-1,281.6	536.1	863.5	1.59	1.46	0.63
LPL 795'FSL, 774'FWL									
7,724.0	87.90	91.20	7,133.6	-1,281.7	539.8	867.1	1.59	1.46	0.62
7,820.0	88.30	91.20	7,136.7	-1,283.7	635.7	960.0	0.42	0.42	0.00
7,915.0	88.50	91.00	7,139.4	-1,285.5	730.7	1,051.9	0.30	0.21	-0.21
8,010.0	90.00	90.30	7,140.6	-1,286.6	825.6	1,143.6	1.74	1.58	-0.74
Deepest TVD Drilled - 7140.63' TVD									
8,105.0	90.10	89.40	7,140.5	-1,286.3	920.6	1,235.0	0.95	0.11	-0.95
8,201.0	90.20	89.00	7,140.3	-1,285.0	1,016.6	1,327.0	0.43	0.10	-0.42
8,296.0	90.80	90.80	7,139.5	-1,284.8	1,111.6	1,418.4	2.00	0.63	1.89
8,391.0	91.00	90.10	7,138.0	-1,285.6	1,206.6	1,510.0	0.77	0.21	-0.74
8,487.0	90.90	89.90	7,136.4	-1,285.6	1,302.6	1,602.4	0.23	-0.10	-0.21

<b>Company:</b>	PDC Energy Inc. DJ Basin	<b>Local Co-ordinate Reference:</b>	Well Wiedeman Federal 22H-332
<b>Project:</b>	SEC.22-T4N-R66W	<b>TVD Reference:</b>	WELL @ 4761.0ft (Ensign Rig #152 - RKB - 23')
<b>Site:</b>	Wiedeman Federal 4N66W22G PAD Sec.22-T4N-R66W	<b>MD Reference:</b>	WELL @ 4761.0ft (Ensign Rig #152 - RKB - 23')
<b>Well:</b>	Wiedeman Federal 22H-332	<b>North Reference:</b>	True
<b>Wellbore:</b>	Wiedeman Federal 22H-332 Wellbore #1	<b>Survey Calculation Method:</b>	Minimum Curvature
<b>Design:</b>	Wiedeman Federal 22H-332 Wellbore #1	<b>Database:</b>	US_EDM

Survey									
Measured Depth (ft)	Inclination (°)	Azimuth (°)	Vertical Depth (ft)	+N/-S (ft)	+E/-W (ft)	Vertical Section (ft)	Dogleg Rate (°/100usft)	Build Rate (°/100usft)	Turn Rate (°/100usft)
8,582.0	90.80	89.60	7,135.0	-1,285.2	1,397.6	1,693.7	0.33	-0.11	-0.32
8,678.0	91.10	89.00	7,133.4	-1,284.0	1,493.6	1,785.8	0.70	0.31	-0.63
8,773.0	91.50	88.90	7,131.2	-1,282.3	1,588.5	1,876.7	0.43	0.42	-0.11
8,869.0	90.70	89.70	7,129.4	-1,281.1	1,684.5	1,968.8	1.18	-0.83	0.83
8,964.0	90.70	89.00	7,128.2	-1,280.0	1,779.5	2,059.9	0.74	0.00	-0.74
9,059.0	90.90	88.30	7,126.9	-1,277.8	1,874.4	2,150.7	0.77	0.21	-0.74
9,155.0	90.60	91.00	7,125.6	-1,277.2	1,970.4	2,242.9	2.83	-0.31	2.81
9,250.0	90.70	90.60	7,124.6	-1,278.5	2,065.4	2,334.7	0.43	0.11	-0.42
9,345.0	90.50	90.10	7,123.6	-1,279.1	2,160.4	2,426.3	0.57	-0.21	-0.53
9,441.0	90.20	89.00	7,123.0	-1,278.3	2,256.4	2,518.5	1.19	-0.31	-1.15
9,536.0	90.40	90.80	7,122.5	-1,278.2	2,351.4	2,609.9	1.91	0.21	1.89
9,632.0	91.00	91.20	7,121.3	-1,279.8	2,447.4	2,702.7	0.75	0.63	0.42
9,727.0	91.50	90.50	7,119.2	-1,281.3	2,542.3	2,794.5	0.91	0.53	-0.74
9,823.0	92.20	89.90	7,116.1	-1,281.6	2,638.3	2,887.0	0.96	0.73	-0.63
9,918.0	90.10	92.00	7,114.2	-1,283.2	2,733.2	2,978.8	3.13	-2.21	2.21
10,014.0	90.40	91.90	7,113.8	-1,286.4	2,829.2	3,072.0	0.33	0.31	-0.10
10,109.0	90.30	91.70	7,113.2	-1,289.4	2,924.1	3,164.2	0.24	-0.11	-0.21
10,205.0	90.70	91.20	7,112.4	-1,291.8	3,020.1	3,257.3	0.67	0.42	-0.52
10,301.0	91.10	90.80	7,110.9	-1,293.5	3,116.1	3,350.1	0.59	0.42	-0.42
10,397.0	91.20	90.50	7,109.0	-1,294.6	3,212.0	3,442.8	0.33	0.10	-0.31
10,492.0	91.40	90.30	7,106.8	-1,295.3	3,307.0	3,534.4	0.30	0.21	-0.21
10,588.0	90.90	90.10	7,104.9	-1,295.6	3,403.0	3,626.8	0.56	-0.52	-0.21
10,684.0	90.70	89.70	7,103.5	-1,295.4	3,499.0	3,719.2	0.47	-0.21	-0.42
10,779.0	90.60	89.90	7,102.5	-1,295.1	3,594.0	3,810.5	0.24	-0.11	0.21
10,875.0	90.10	89.60	7,101.9	-1,294.7	3,690.0	3,902.8	0.61	-0.52	-0.31
10,970.0	90.00	89.20	7,101.8	-1,293.7	3,785.0	3,994.0	0.43	-0.11	-0.42
11,065.0	90.10	88.70	7,101.7	-1,292.0	3,880.0	4,084.9	0.54	0.11	-0.53
11,161.0	90.50	87.50	7,101.2	-1,288.8	3,975.9	4,176.4	1.32	0.42	-1.25
11,256.0	90.30	88.20	7,100.5	-1,285.2	4,070.8	4,266.8	0.77	-0.21	0.74
11,352.0	90.70	88.30	7,099.7	-1,282.3	4,166.8	4,358.4	0.43	0.42	0.10
11,447.0	90.80	89.90	7,098.5	-1,280.8	4,261.8	4,449.4	1.69	0.11	1.68
11,543.0	91.10	89.90	7,096.9	-1,280.6	4,357.7	4,541.7	0.31	0.31	0.00
11,639.0	91.70	89.40	7,094.5	-1,280.0	4,453.7	4,633.9	0.81	0.63	-0.52
11,734.0	91.80	88.90	7,091.6	-1,278.6	4,548.7	4,725.0	0.54	0.11	-0.53
11,790.4	91.80	88.90	7,089.9	-1,277.5	4,605.1	4,779.0	0.00	0.00	0.00
<b>BHL 715'FSL, 500'FEL</b>									
11,791.0	91.80	88.90	7,089.8	-1,277.5	4,605.6	4,779.5	0.00	0.00	0.00

<b>Company:</b>	PDC Energy Inc. DJ Basin	<b>Local Co-ordinate Reference:</b>	Well Wiedeman Federal 22H-332
<b>Project:</b>	SEC.22-T4N-R66W	<b>TVD Reference:</b>	WELL @ 4761.0ft (Ensign Rig #152 - RKB - 23')
<b>Site:</b>	Wiedeman Federal 4N66W22G PAD Sec.22-T4N-R66W	<b>MD Reference:</b>	WELL @ 4761.0ft (Ensign Rig #152 - RKB - 23')
<b>Well:</b>	Wiedeman Federal 22H-332	<b>North Reference:</b>	True
<b>Wellbore:</b>	Wiedeman Federal 22H-332 Wellbore #1	<b>Survey Calculation Method:</b>	Minimum Curvature
<b>Design:</b>	Wiedeman Federal 22H-332 Wellbore #1	<b>Database:</b>	US_EDM

Design Targets									
Target Name - hit/miss target - Shape	Dip Angle (°)	Dip Dir. (°)	TVD (ft)	+N/-S (ft)	+E/-W (ft)	Northing (usft)	Easting (usft)	Latitude	Longitude
SHL 2080'FSL, 238'FWL - survey hits target center - Point	0.00	0.00	1.0	0.0	0.0	1,351,365.58	3,202,996.84	40.295612	-104.772246
BHL 715'FSL, 500'FEL - survey misses target center by 20.0ft at 11790.4ft MD (7089.9 TVD, -1277.5 N, 4605.1 E) - Point	0.00	0.00	7,090.0	-1,297.6	4,605.5	1,350,105.89	3,207,612.59	40.292049	-104.755737

Survey Annotations				
Measured Depth (ft)	Vertical Depth (ft)	Local Coordinates		Comment
		+N/-S (ft)	+E/-W (ft)	
7,398.8	7,078.5	-1,269.5	222.0	TPZ - 460' Setback - 810'FSL, 460'FWL
8,010.0	7,140.6	-1,286.6	825.6	Deepest TVD Drilled - 7140.63' TVD

Checked By: _____	Approved By: _____	Date: _____
-------------------	--------------------	-------------