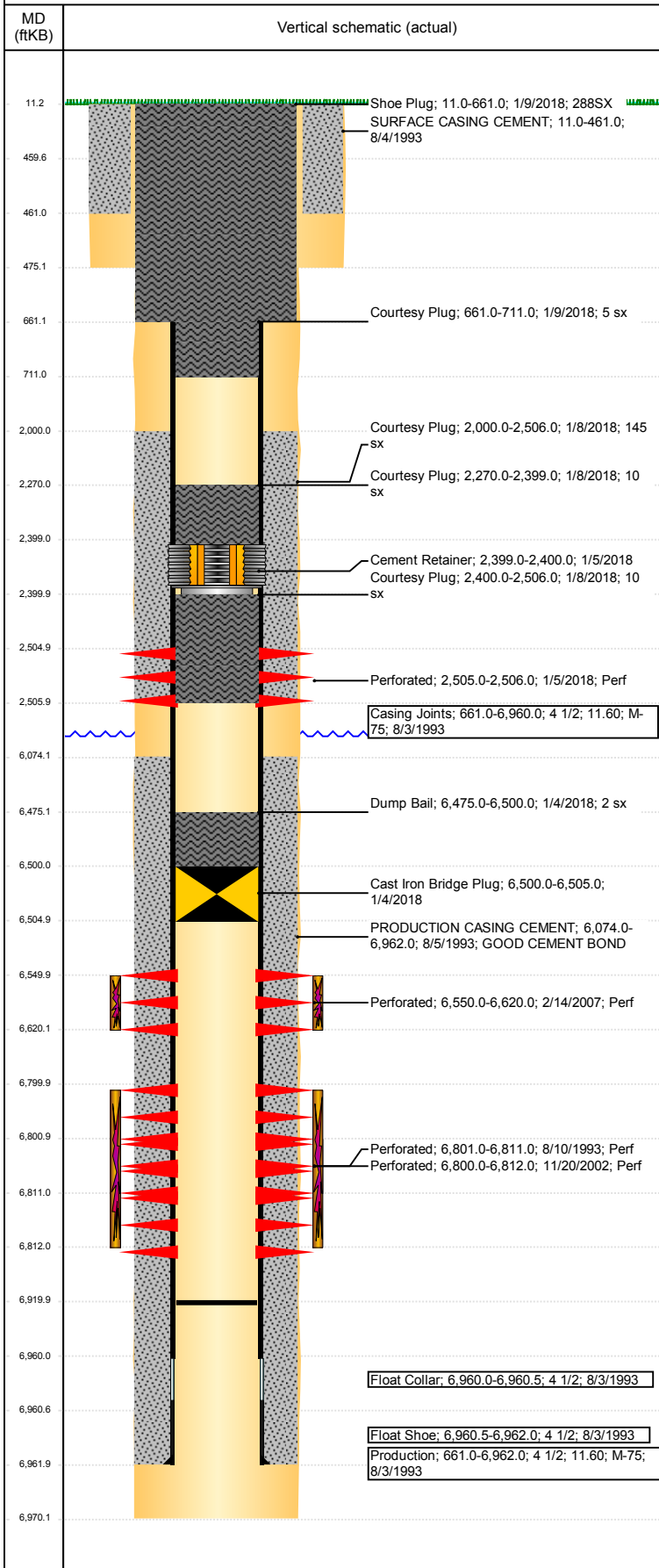


Well Name: RICHARDSON 10-12

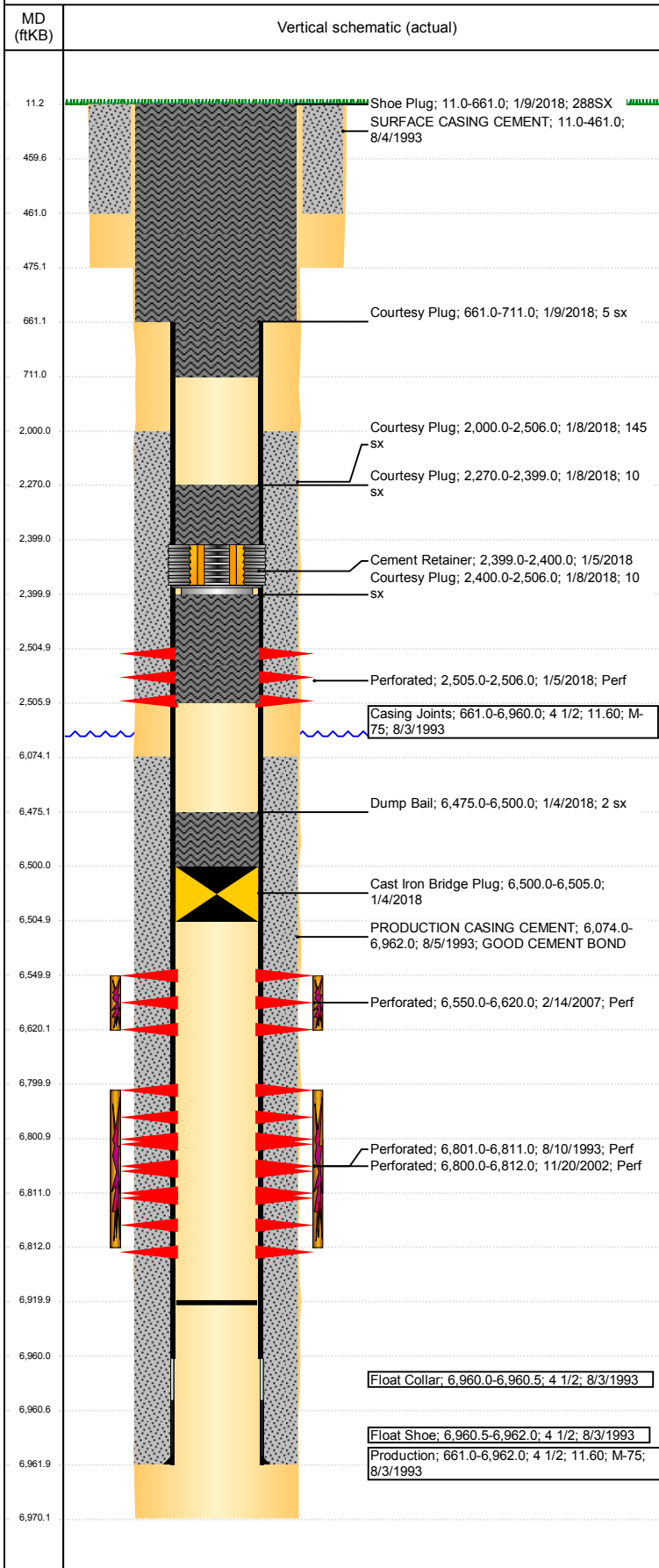
VERTICAL - ORIGINAL HOLE, 1/30/2018 2:14:25 PM



Well Header								
API 05-123-17191	Business Unit DJ BASIN		District 15		Well Config VERTICAL			
Original KB Elevation (ft) 4,674	KB - GL / MSL (ftKB) 11.00		Spud Date 7/29/1993		P & A Date			
Comment ACOUSTIC CEMENT BOND LOG END AT 5900								
Directions To Well CR 46 AND 55 NORTH .25 EAST CROSS CATTLE GUARD .1 NORTH .1 INTO								
Congressional Location								
Quarter 3 NW	Quarter 4 SW	Section 10	Township 4	Twnshp N/S Dir N	Range 64	Range E/W Dir W		
Bottom Hole Location								
North-South Distance (ft)		From N or S Line		East-West Distance (ft)		From E or W Line		
Plug Back Total Depths								
Date	Depth (ftKB)	Method			Com			
8/4/1993	6,920.0	CASING TALLY						
Wellbore Sections								
Section Des		Size (in)		Act Top, MD (ftKB)		Act Btm, MD (ftKB)		
SURFACE		12 1/4		11		475		
PRODUCTION		7 7/8		475		6,970		
Zone Statuses								
Zone Name	Status Date	Status	Fluid Type	Job	Prod Method			
CODELL	8/12/1993	PR		DRILLING/CO...				
CODELL	12/6/2002	PR		RE-FRAC, 11/2...				
CODELL	2/27/2007	PR		RECOMPLETI...				
CODELL	3/1/2016	SI						
NIOBRARA	2/27/2007	PR		RECOMPLETI...				
NIOBRARA	3/1/2016	SI						
NIOBRARA-C...	2/27/2007	SI		PLUG AND AB...				
Casing Strings								
Surface, 461.0ftKB								
Casing Description Surface		Run Date 7/29/1993	OD (in) 8 5/8	Wt/Len (l...) 23.00	Grade M-50	Top, MD (ft...) 11.0	MD (ftKB) 461.0	
Production, 6,962.0ftKB								
Casing Description Production		Run Date 8/3/1993	OD (in) 4 1/2	Wt/Len (l...) 11.60	Grade M-75	Top, MD (ft...) 11.0	MD (ftKB) 6,962.0	
Cement								
Description SURFACE CASING CEMENT				Top Depth (ftKB) 11.0		Bottom Depth (ftKB) 461.0		
Description PRODUCTION CASING CEMENT				Top Depth (ftKB) 6,074.0		Bottom Depth (ftKB) 6,962.0		
Description Dump Bail				Top Depth (ftKB) 6,475.0		Bottom Depth (ftKB) 6,500.0		
Description Courtesy Plug				Top Depth (ftKB) 2,000.0		Bottom Depth (ftKB) 2,506.0		
Description Courtesy Plug				Top Depth (ftKB) 2,270.0		Bottom Depth (ftKB) 2,399.0		
Description Courtesy Plug				Top Depth (ftKB) 2,400.0		Bottom Depth (ftKB) 2,506.0		
Description Courtesy Plug				Top Depth (ftKB) 661.0		Bottom Depth (ftKB) 711.0		
Description Shoe Plug				Top Depth (ftKB) 11.0		Bottom Depth (ftKB) 661.0		
Tubing Strings								
Tubing Description Tubing		Run Date 3/2/2007	String... 2 3/8	ID (in) 2.00	Wt (lb/ft) 4.70	Grade J-55	Len (ft) 6,767.00	Set De...
Tubing Components								
Item Des		OD (in)	Wt (lb/ft)	Grade	Jts	Len (ft)	Btm (ftKB)	Btm (TVD) (ftKB)
Tubing		2 3/8	4.70	J-55	221	6,765.35	6,776.4	
Seating Nipple		2 3/8	1.10			0.50	6,776.9	
Notched collar		2 3/8				1.15	6,778.0	
Other In Hole								
Run Date		Des			OD (in)	Top (ftKB)	Btm (ftKB)	
1/4/2018		Cast Iron Bridge Plug			4	6,500.0	6,505.0	
1/5/2018		Cement Retainer			4	2,399.0	2,400.0	

Well Name: RICHARDSON 10-12

VERTICAL - ORIGINAL HOLE, 1/30/2018 2:14:25 PM



Logs			
Date	Type	Top, MD (ftKB)	Btm, MD (ftKB)
8/2/1993	INDUCTION	500.0	6,970.0
8/6/1993	CEMENT BOND	5,900.0	6,970.0
1/4/2018	GYRO	12.0	6,700.0
1/5/2018	RADIAL CEMENT	12.0	6,480.0

Perforation Data					
Linked Zone	Bnch/St g	Sum of Entered Shot Total	Top (ftKB)	Btm (ftKB)	Date
NIOBRARA, ORIGINAL HOLE		6	2,505.00	2,506.00	1/5/2018
CODELL, ORIGINAL HOLE		204	6,550.00	6,620.00	2/14/2007
CODELL, ORIGINAL HOLE		48	6,800.00	6,812.00	11/20/2002
CODELL, ORIGINAL HOLE		20	6,801.00	6,811.00	8/10/1993
Total (Sum)		278			

Stimulation Intervals		
Start Date	Primary Job Type	
8/10/1993	DRILLING/COMPLETION - ORIGINAL	
Technical Result	Tech Result Details	Tech Result Note
Comment		
Start Date	Primary Job Type	
11/21/2002	RE-FRAC	
Technical Result	Tech Result Details	Tech Result Note
Comment		
Start Date	Primary Job Type	
2/14/2007	RECOMPLETION	
Technical Result	Tech Result Details	Tech Result Note
Comment		