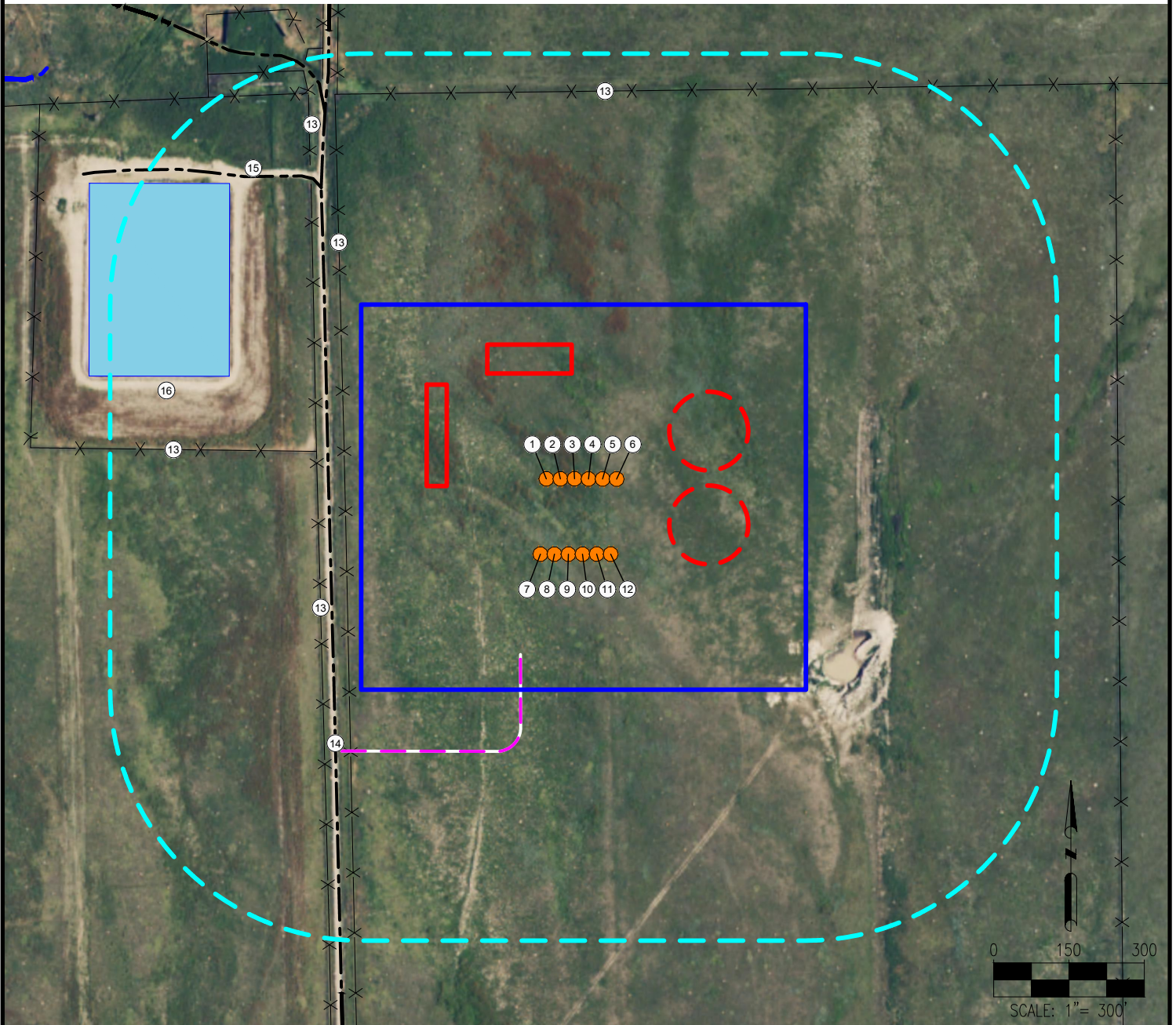


CURRIE (FED) 12-A PAD LOCATION DRAWING



1. CURRIE (FED) 1N-20-2C
2. CURRIE (FED) 1N-20-5C
3. CURRIE (FED) 1N-20-1N
4. CURRIE (FED) 1N-20-3N
5. CURRIE (FED) 1N-20-4N
6. CURRIE (FED) 1N-20-6N
7. CURRIE (FED) 12S-20-2C
8. CURRIE (FED) 12S-20-5C
9. CURRIE (FED) 12S-20-1N
10. CURRIE (FED) 12S-20-3N
11. CURRIE (FED) 12S-20-4N
12. CURRIE (FED) 12S-20-6N
13. FENCES ARE $\pm 485'$ W, $\pm 540'$ W, $\pm 545'$ W, $\pm 772'$ N, $\pm 836'$ NW, $\pm 916'$ NW, $\pm 950'$ NW, $\pm 957'$ NW
14. WELD COUNTY ROAD 107 IS $\pm 506'$ W
15. PRIVATE ROADS ARE $\pm 788'$ NW, $\pm 900'$ NW
16. POND IS $\pm 744'$ W

LEGEND:

- = PROPOSED WELL
- = PROPOSED ACCESS ROAD
- = EXISTING ROAD
- = STREAM
- X X X = FENCE
- = DISTURBANCE AREA
- = 500' RADIUS
- = POND
- = PROPOSED FACILITY
- = PROPOSED MLVT

MEASURED FROM NEAREST WELL OR FACILITY:

- BUILDING $\pm 1368'$ SW
- BUILDING UNIT $\pm 1368'$ SW
- PUBLIC ROAD (WELD COUNTY ROAD 107) $\pm 167'$ W
- PROPERTY LINE (HAWKINS JOSEPH) $\pm 179'$ W
- UTILITY (POWERLINE) $\pm 1333'$ SW
- RAILROAD $\pm 5280'$ N

MEASURED FROM NEAREST EDGE OF DISTURBANCE:

- SURFACE WATER (POND) $\pm 263'$ W
- MEASURED FROM NEAREST EDGE OF DISTURBANCE:
- WATER WELL $\pm 1072'$ SW SWL = 71'
- PERMIT: 278469 RECEIPT: 3662759

REFERENCE LOCATION

****CURRIE (FED) 1N-20-3N****

LAT: 40.770539° N
LONG: 104.048177° W
ELEVATION: 5087'
768' FNL & 514' FWL
PDOP: 1.4
GPS OPERATOR: AARON RIVERA

DISCLAIMER:
THIS PLOT DOES NOT REPRESENT A MONUMENTED LAND SURVEY AND SHOULD NOT BE RELIED UPON TO DETERMINE BOUNDARY LINES, PROPERTY OWNERSHIP OR OTHER PROPERTY INTERESTS. PARCEL LINES, IF DEPICTED HAVE NOT BEEN FIELD VERIFIED AND MAY BE BASED UPON PUBLICLY AVAILABLE DATA THAT ALSO HAS NOT BEEN INDEPENDENTLY VERIFIED.

DATA SOURCE:
AERIAL IMAGERY: NAIP 2015
WATER WELLS: COLORADO DWR
NHD: USGS

PUBLICLY AVAILABLE DATA SOURCES HAVE NOT BEEN INDEPENDENTLY VERIFIED BY ASCENT.

DISTURBANCE ACREAGE:

15.6 ACRES DRILLING OPERATIONS
5.9 ACRES INTERIM RECLAIM

CURRENT SURFACE USE: RANGELAND
FUTURE SURFACE USE: RANGELAND

PREPARED FOR:



7535 Hilltop Circle
Denver, CO 80221
(303) 928-7128
www.ascentgeomatics.com

FIELD DATE:

01-18-18

DRAWING DATE:

01-19-18

BY:

HED

CHECKED:

IJM

SITE NAME:

CURRIE (FED) 12-A PAD

SURFACE LOCATION:

NW 1/4 NW 1/4 SEC. 12, T9N, R60W, 6TH P.M.

WELD COUNTY, COLORADO

8NORTH