



Bonanza Creek

Production Post Job Report

Mustang B11-23-24XRLNB

S:22 T:4N R:63W Weld CO

Quote #:

I Execution #:



Newpek

Joel Dill | (303) 893-2503 | JDill@bonanzacrk.com

Bonanza Creek Energy | 730 17th Street, Suite 610 | Denver, CO 80202

Dear Mr. Joel Dill,

Thank you for the opportunity to provide cementing services on this well. BJ Services strives to achieve complete customer satisfaction. If you have any questions regarding the services or data provided, please contact BJ Services at any time.

Sincerely,
Jacob Ojeda
Field Engineer I | (763) 516-3012 | jacob.ojeda@bjservices.com

Field Office 1716 East Allison Rd., Cheyenne WY, 82007
Phone: (307) 638-5585

Sales Office 999 18th St. Suite 1200 Denver, CO 80202
Phone: (281) 408-2361

Cementing Treatment



Start Date	10/13/2017	Well	Mustang B11-23-24XRLNB
End Date	12/30/2017	County	Weld
Client	BONANZA CREEK ENERGY	State/Province	CO
District	Cheyenne, WY	API	05-123-45803
		Type of Job	Long String

WELL GEOMETRY

Type	ID (in)	OD (in)	Wt. (lb/ft)	MD (ft)	TVD (ft)	Excess(%)
Open Hole	8.50			16,575.00	6,403.00	10.00
Casing	4.89	5.50	17.00	16,560.00	6,403.00	
Previous Casing	8.92	9.63	36.00	1,730.00	1,730.00	

Shoe Length (ft): 42

HARDWARE

Bottom Plug Used?	No	Top Connection Thread	LTC
Top Plug Used?	No	Top Connection Size	5.5
Top Plug Provided By	Tool Hand		
Top Plug Size	5.5		
Centralizers Used	No		
Landing Collar Depth (ft)	16,518		

Cementing Treatment



CIRCULATION PRIOR TO JOB

Well Circulated By	Rig	Solids Present at End of Circulation	No
Circulation Prior to Job	No	10 sec SGS	7
Lost Circulation Prior to Cement Job	No	10 min SGS	8
Mud Density In (ppg)	10	30 min SGS	13
Mud Density Out (ppg)	10	Flare Prior to/during the Cement Job	No
PV Mud In	16	Gas Present	No
PV Mud Out	16		
YP Mud In	12		
YP Mud Out	12		

TEMPERATURE

Ambient Temperature (°F)	40	Slurry Cement Temperature (°F)	65
Mix Water Temperature (°F)	60		

Cementing Treatment



BJ FLUID DETAILS

Fluid Type	Fluid Name	Density (ppg)	Yield (Cu Ft/sk)	H2O Req. (gals/sk)	Vol (sk)	Vol (Cu Ft)	Vol (bbls)
Spacer / Pre Flush / Flush	CD Spacer	11.5000					40.0000
Lead Slurry	P100-X2 (Lead)	12.5000	2.0759	11.84	621	1,289.0000	229.6000
Tail Slurry	P50-X1 (Tail)	13.5000	1.4774	7.45	1,972	2,913.0000	518.7000
Displacement 1	GW-86 Pill	8.3300				0.0000	10.0000
Displacement 2	Retarded Water	8.3337				0.0000	80.0000
Displacement Final	Displacement Final (Water)	8.3308				0.0000	293.5000

Fluid Type	Fluid Name	Component	Concentration	UOM
Spacer / Pre Flush / Flush	CD Spacer	SAND, S-8, Silica Flour, 200 Mesh	208.53	PPB
Spacer / Pre Flush / Flush	CD Spacer	EXTENDER, BENTONITE	5.00	PPB
Spacer / Pre Flush / Flush	CD Spacer	SURFACTANT, SS-267, (BJS ONLY)	0.50	GPB
Spacer / Pre Flush / Flush	CD Spacer	GELLANT WATER, GW-86	0.90	PPB
Spacer / Pre Flush / Flush	CD Spacer	RETARDER, HIGH TEMP, R-31 (BJS Only)	0.51	PPB
Spacer / Pre Flush / Flush	CD Spacer	Spacer Surfactant, SS-247, (BJS Only)	0.50	GPB
Lead Slurry	P100-X2 (Lead)	FLUID LOSS, FL-24, (BJS Only)	0.30	BWOB
Lead Slurry	P100-X2 (Lead)	SPECIAL ADDITIVE, MPA-300	0.10	BWOB
Lead Slurry	P100-X2 (Lead)	CEMENT, ASTM TYPE III	100.00	PCT
Lead Slurry	P100-X2 (Lead)	IntegraSeal CELLO	0.13	LBS/SK
Lead Slurry	P100-X2 (Lead)	BONDING AGENT, BA-60	0.40	BWOB
Lead Slurry	P100-X2 (Lead)	FP-25, Dry Foam Preventer (BJS Only)	0.30	BWOB
Lead Slurry	P100-X2 (Lead)	RETARDER, HIGH TEMP, R-31 (BJS Only)	0.18	BWOB

Cementing Treatment



Tail Slurry	P50-X1 (Tail)	EXTENDER, BENTONITE	2.00	BWOB
Tail Slurry	P50-X1 (Tail)	FP-25, Dry Foam Preventer (BJS Only)	0.30	BWOB
Tail Slurry	P50-X1 (Tail)	CEMENT, CLASS G	50.00	PCT
Tail Slurry	P50-X1 (Tail)	FLUID LOSS, FL-66	0.20	BWOB
Tail Slurry	P50-X1 (Tail)	Flyash (Rockies)	50.00	PCT
Tail Slurry	P50-X1 (Tail)	GELLANT WATER, GW-86	0.10	BWOB
Tail Slurry	P50-X1 (Tail)	AR-20	0.10	BWOB
Displacement 1	GW-86 Pill	GELLANT WATER, GW-86	2.50	PPB
Displacement 1	GW-86 Pill	RETARDER, R-8L	0.50	PPB
Displacement 2	Retarded Water	RETARDER, R-8L	0.50	GPB

TREATMENT SUMMARY

Fluid	Rate (bpm)	Fluid Vol. (bbls)
CD Spacer	5.00	40.00
P100-X2 (Lead)	6.00	229.60
P50-X1 (Tail)	6.00	518.70
GW-86 Pill	0.00	10.00
Retarded Water	5.00	80.00
Displacement Final (Water)	8.00	293.50

Cementing Treatment



DISPLACEMENT AND END OF JOB SUMMARY

Displaced By	BJ	Amount of Cement Returned/Reversed	55
Calculated Displacement Volume (bbls)	383	Amount of Spacer to Surface	40
Did Float Hold?	Yes	Total Volume Pumped (bbls)	1169
Bump Plug	No	Top Out Cement Spotted	No
Were Returned Planned at Surface	No	Lost Circulation During Cement Job	No

CEMENT PLUG

Bottom of Cement Plug?	No	Wiper Balls Used?	No
		Plug Catcher	No

Customer Name Bonanza Creek
 Well Name Mustang
 Job Type Long String

District Cheyenne
 Supervisor Andrew Hyde
 Engineer _____



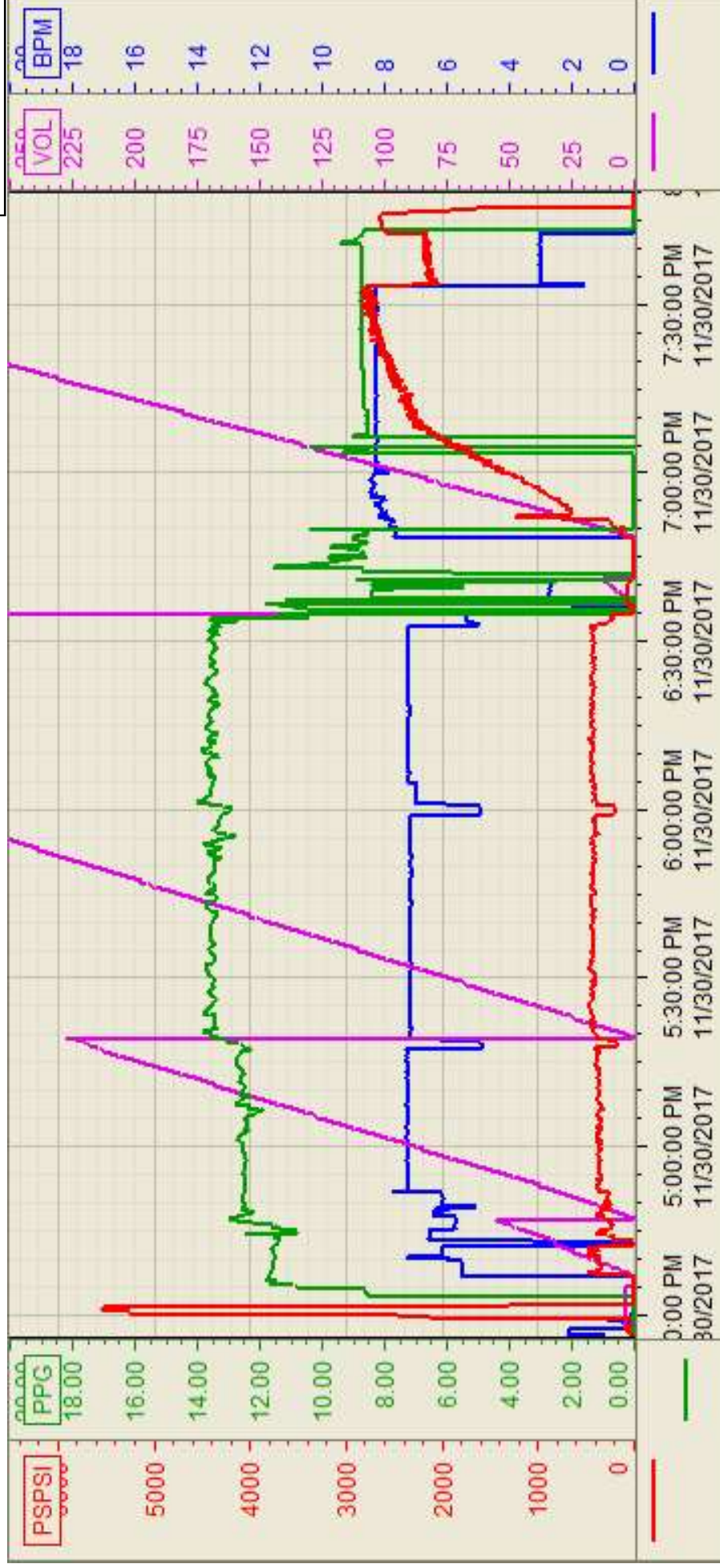
Seq No.	Start Date/Time	Category	Event	Equipment	Event ID	Density (lb/gal)	Pump Rate (bpm)	Pump Vol (bbls)	Pipe Pressure (psi)	Comments
1	11/30/2017 6:00	Mobilization	Call Out							BJ crew gets called out and requested on location at 12:30
2	11/30/2017 8:00	Mobilization	Safety Meeting							BJ crew talks about the hazards of driving to location
3	11/30/2017 8:30	Mobilization	Depart Yard							Depart yard
4	11/30/2017 11:00	Mobilization	Arrive On Location		48					Arrive on location
5	11/30/2017 11:15	Operational	Safety Meeting							BJ crew talks about the hazards of spotting in equipment and rigging up
6	11/30/2017 11:30	Operational	Rig Up		50					Rig up
7	11/30/2017 13:00	Operational	Waiting							Wait for casing crew to finish running casing
8	11/30/2017 15:45	Operational	Safety Meeting							BJ and rig crew talk about the hazards of pumping the job
9	11/30/2017 16:34	Operational	Fill Lines			8.33	2	3	80	Pump 3 bbls of water to fill lines
10	11/30/2017 16:37	Operational	Pressure Test							Pressure test pumps and lines to 5500 psi
11	11/30/2017 16:45	Operational	Pump Spacer		56	11.5	6	40	300	Pump 40 bbls of spacer at 11.5 ppg, with 20 gals of ASF-20, 20 gals of ASF-80
12	11/30/2017 16:55	Operational	Pump Lead Cement			12.5	7	229	400	Mix up and pump 621 sks of P100-X2 lead cement at 12.5 ppg, yield 2.07, 11.81 gal/sk, 229 bbls
13	11/30/2017 17:28	Operational	Pump Tail Cement			13.5	7	517	512	Mix up and pump 1972 sks of P50-X1 tail cement at 13.5 ppg, yield 1.47, 7.43 gal/sk, 517 bbls
14	11/30/2017 18:43	Operational	Shutdown							Shutdown to line out manifold to wash pumps and lines to the pit
15	11/30/2017 18:45	Operational	Wash Lines							Wash pumps and lines
16	11/30/2017 18:55	Operational	Drop Top Plug		63					Customer witness plug leave manifold
17	11/30/2017 18:56	Operational	Pump Pill Plug			8.6	6	10	200	Pump 10 bbl pill, with 22.5 lbs of AVS-10, 5 gals of R8-L
18	11/30/2017 18:58	Operational	Pump Displacement			8.33	8	353	2400	Pump 373 bbls of water displacement with 4 gals biocide, 20 gals of ASF-50, first 80 bbls will have 40 gals of R8-L
19	11/30/2017 19:42	Operational	Slow Rate			8.33	3	20	2000	Slow rate the last 20 bbls to 3 bpm
20	11/30/2017 19:51	Operational	Bump Plug							Bump plug at 2100 psi, took it up to 2600 psi
21	11/30/2017 19:54	Operational	Check Floats							Got bbls back to the truck
22	11/30/2017 20:00	Operational	Safety Meeting							BJ crew talks about the hazards of rigging down
23	11/30/2017 20:15	Operational	Rig Down		73					Rig down
24	11/30/2017 21:30	Operational	Depart Location							Depart location
25	11/31/17 21:31	Operational	Other							Estimated top of tail at 3889 ft, got 55 bbls of cement to surface



Customer: Bonanza Creek
Well Number: BH-23
Lease Info: Mustang

Print Date/Time

11/30/2017 8:18:56 PM



Name	Y value	X value/time stamp	Tag name Y
1 DS - Press (PSI)	0.0 i.	11/30/2017 7:50:00 PM i.	CementedDS_DISCHARGE_PRESS_DIAL
2 Recirc - Density (PPG)	0.01	11/30/2017 7:50:03 PM	CementedDENSITY_ACTUAL_RATE
3 Down Hole Total (BBLs)	395.7	11/30/2017 7:50:03 PM	CementedDOWNHOLE_FLOW_TOTAL
4 Combined rate (BPM)		11/30/2017 7:50:00 PM i.	CementedFlow_Combined
5			

Source: Control1 8:18:51 PM