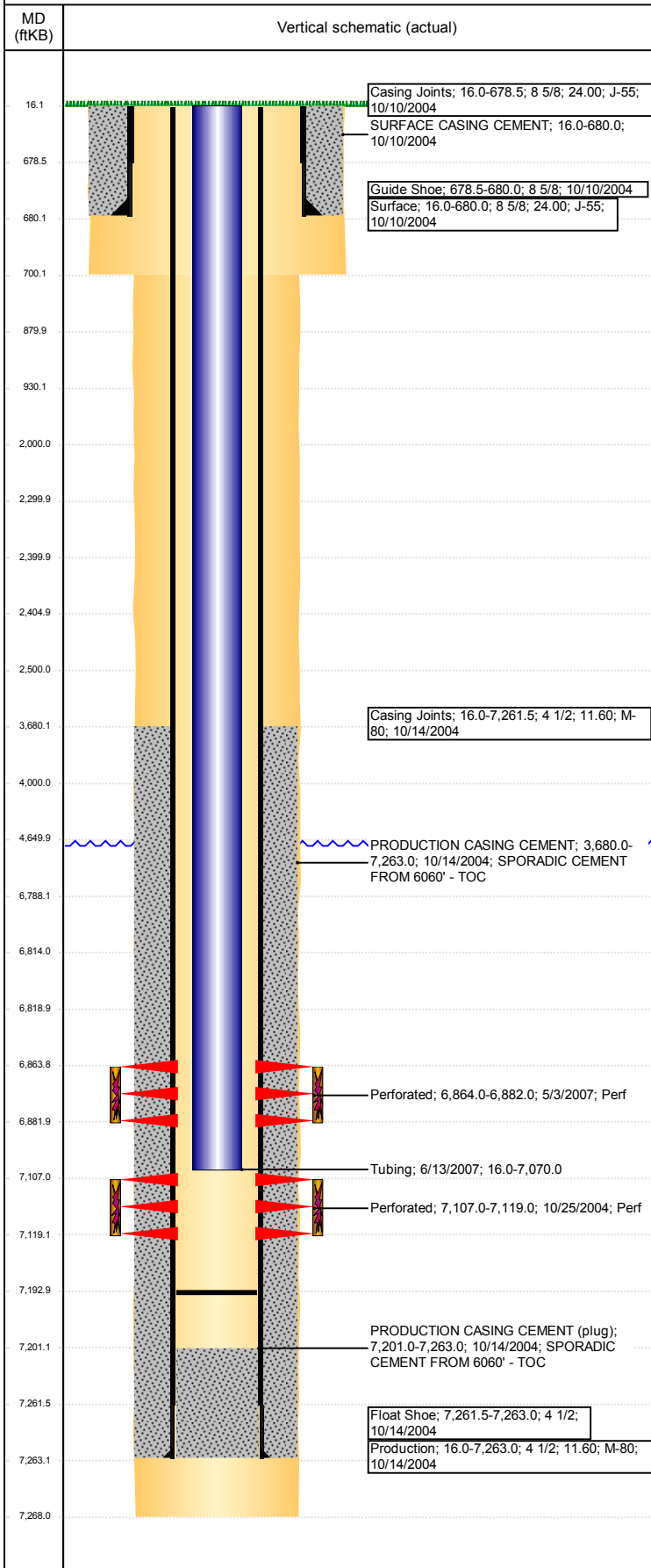


Wellbore Schematic Input Report

Well Name: MOSER H26-12

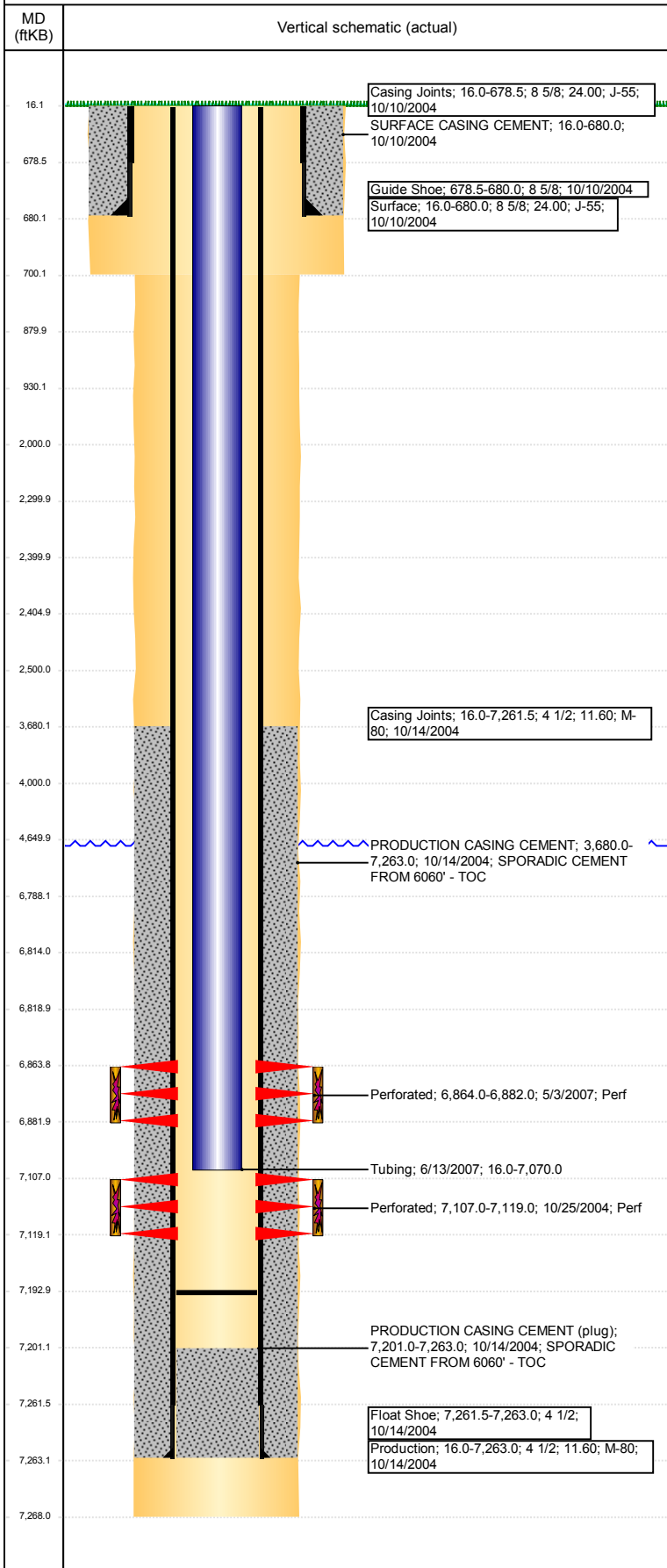
VERTICAL - ORIGINAL HOLE, 1/29/2018 1:15:37 PM



Well Header									
API 05-123-22419		Business Unit DJ BASIN		District 15		Well Config VERTICAL			
Original KB Elevation (ft) 4,836		KB - GL / MSL (ftKB) 16.00		Spud Date 10/9/2004		P & A Date			
Comment									
Directions To Well									
Congressional Location									
Quarter 3 NW		Quarter 4 SW		Section 26	Township 3	Twnshp N/S Dir N	Range 65		Range E/W Dir W
Bottom Hole Location									
North-South Distance (ft)			From N or S Line		East-West Distance (ft)			From E or W Line	
Plug Back Total Depths									
Date		Depth (ftKB)	Method			Com			
10/14/2004		7,218.0	CASING TALLY			FLOAT SHOE W/ LATCH DOWN BAFFLE			
10/25/2004		7,201.0	CASED HOLE LOG			DEPTH LOGGER ON CBL			
5/1/2007		6,932.0	TAG			CIPF			
6/12/2007		7,193.0				CHASED PLUG DID NOT TAG			
Wellbore Sections									
Section Des			Size (in)		Act Top, MD (ftKB)		Act Btm, MD (ftKB)		
SURFACE			12 1/4		16		700		
PRODUCTION			7 7/8		700		7,268		
Zone Statuses									
Zone Name		Status Date	Status	Fluid Type	Job	Prod Method			
NIOBRARA		6/5/2007	PR		RECOMPLETI...				
CODELL		11/12/2004	PR		DRILLING/CO...				
Casing Strings									
Surface, 680.0ftKB									
Casing Description Surface			Run Date 10/10/2004	OD (in) 8 5/8	Wt/Len (l... 24.00	Grade J-55	Top, MD (ft... 16.0	MD (ftKB) 680.0	
Production, 7,263.0ftKB									
Casing Description Production			Run Date 10/14/2004	OD (in) 4 1/2	Wt/Len (l... 11.60	Grade M-80	Top, MD (ft... 16.0	MD (ftKB) 7,263.0	
Cement									
Description SURFACE CASING CEMENT					Top Depth (ftKB) 16.0		Bottom Depth (ftKB) 680.0		
Description PRODUCTION CASING CEMENT					Top Depth (ftKB) 3,680.0		Bottom Depth (ftKB) 7,263.0		
Description Dump Bail					Top Depth (ftKB) 6,788.0		Bottom Depth (ftKB) 6,814.0		
Description Balance Plug					Top Depth (ftKB) 4,000.0		Bottom Depth (ftKB) 4,650.0		
Description Balance Plug					Top Depth (ftKB) 2,405.0		Bottom Depth (ftKB) 2,500.0		
Description Balance Plug					Top Depth (ftKB) 2,300.0		Bottom Depth (ftKB) 2,400.0		
Description Cement Squeeze					Top Depth (ftKB) 2,000.0		Bottom Depth (ftKB) 2,500.0		
Description Balance Plug					Top Depth (ftKB) 880.0		Bottom Depth (ftKB) 930.0		
Description Balance Plug					Top Depth (ftKB) 680.0		Bottom Depth (ftKB) 880.0		
Description Balance Plug					Top Depth (ftKB) 16.0		Bottom Depth (ftKB) 680.0		
Tubing Strings									
Tubing Description Tubing			Run Date 6/13/2007	String... 2 3/8	ID (in) 2.00	Wt (lb/ft) 4.70	Grade J-55	Len (ft) 7,054.00	Set De...
Tubing Components									
Item Des			OD (in)	Wt (lb/ft)	Grade	Jts	Len (ft)	Btm (ftKB)	Btm (TVD) (ftKB)
Tubing			2 3/8	4.70	J-55	218	7,052.00	7,068.0	
Seal Nipple			2 3/8				1.00	7,069.0	
Notched collar			2 3/8				1.00	7,070.0	
Other In Hole									
Run Date		Des				OD (in)	Top (ftKB)	Btm (ftKB)	
1/22/2018		Cement Retainer				4	2,400.0	2,405.0	
1/22/2018		Cast Iron Bridge Plug				4	6,814.0	6,819.0	

Well Name: MOSER H26-12

VERTICAL - ORIGINAL HOLE, 1/29/2018 1:15:38 PM



Logs				
Date	Type	Top, MD (ftKB)	Btm, MD (ftKB)	
10/13/2004	COMPENSATED DENSITY	4,200.0	7,251.0	
10/13/2004	INDUCTION	680.0	7,271.0	
10/25/2004	CEMENT BOND	3,480.0	7,198.0	
11/23/2013	GYRO	16.0	7,000.0	
11/23/2013	GYRO	16.0	7,000.0	

Perforation Data					
Linked Zone	Bnch/St g	Sum of Entered Shot Total	Top (ftKB)	Btm (ftKB)	Date
CODELL, ORIGINAL HOLE		0	2,500.00	2,500.00	1/22/2018
NIOBRARA, ORIGINAL HOLE		72	6,864.00	6,882.00	5/3/2007
CODELL, ORIGINAL HOLE		48	7,107.00	7,119.00	10/25/2004
Total (Sum)		120			

Stimulation Intervals		
Start Date	Primary Job Type	
11/10/2004	DRILLING/COMPLETION - ORIGINAL	
Technical Result	Tech Result Details	Tech Result Note
Comment		
Start Date	Primary Job Type	
6/4/2007	RECOMPLETION	
Technical Result	Tech Result Details	Tech Result Note
Comment		