

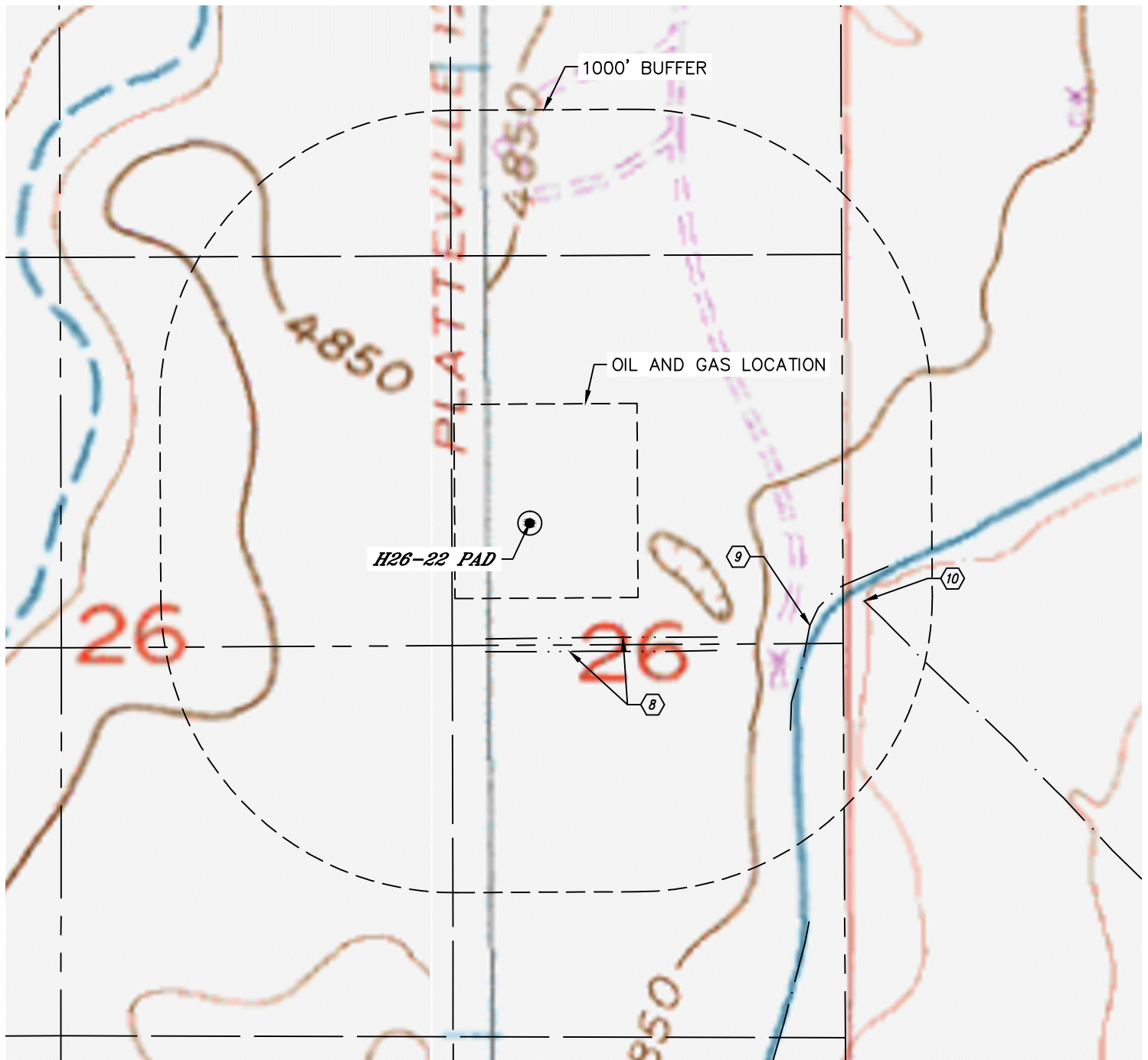


Lat40°, Inc. 6250 W. 10th Street, Unit 2, Greeley, CO 970-515-5294

HYDROLOGY MAP

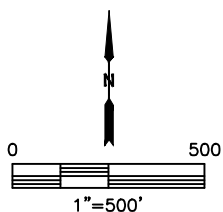
H26-22 PAD

SECTION: 26
TOWNSHIP: 3N
RANGE: 65W
6TH. P.M.
WELD COUNTY, CO



DISTANCES MEASURED FROM THE EDGE OF THE OIL AND GAS LOCATION.

- ⑧ BORROW DITCH 135' & 182' S
- ⑨ EAST NERES CANAL 591' SE
- ⑩ DITCH 769' E



DATE: 8/30/2017
PROJECT#: 2017022