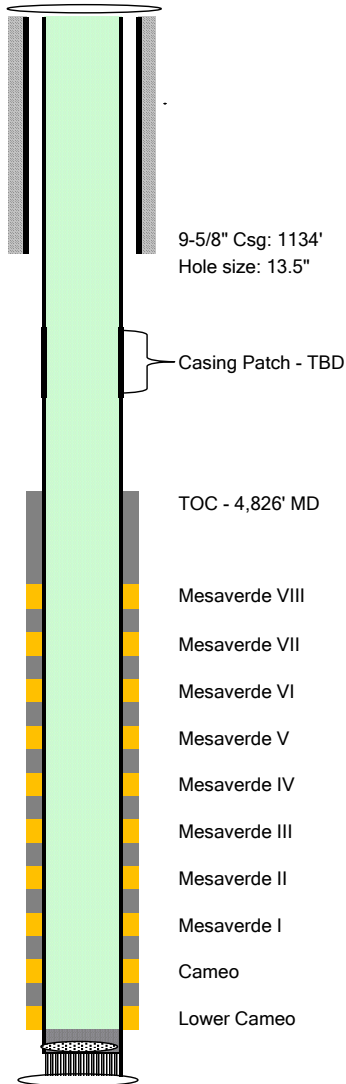


Exploration and Production



Well Name **SR 413-12**
 Location **Lat: 39.451101; Long: -107.836668**
 Field **Rulison**
 County **Garfield, CO**
 API **05-045-23443**
 KB **24**
 Elev **7479**

Spud

Conductor **80'**
 Casing **1,118'** **9-5/8" 32.3#**
 Cement **300 sx** **Class G**
 Casing **9,586'** **4-1/2" 11.6# P-110**
 Cement **1075 sx** **Class G**

Tubing **N/A**

Formation Tops

Mesaverde **6,077**
 Cameo **8,944**

TOC - 4,826' MD