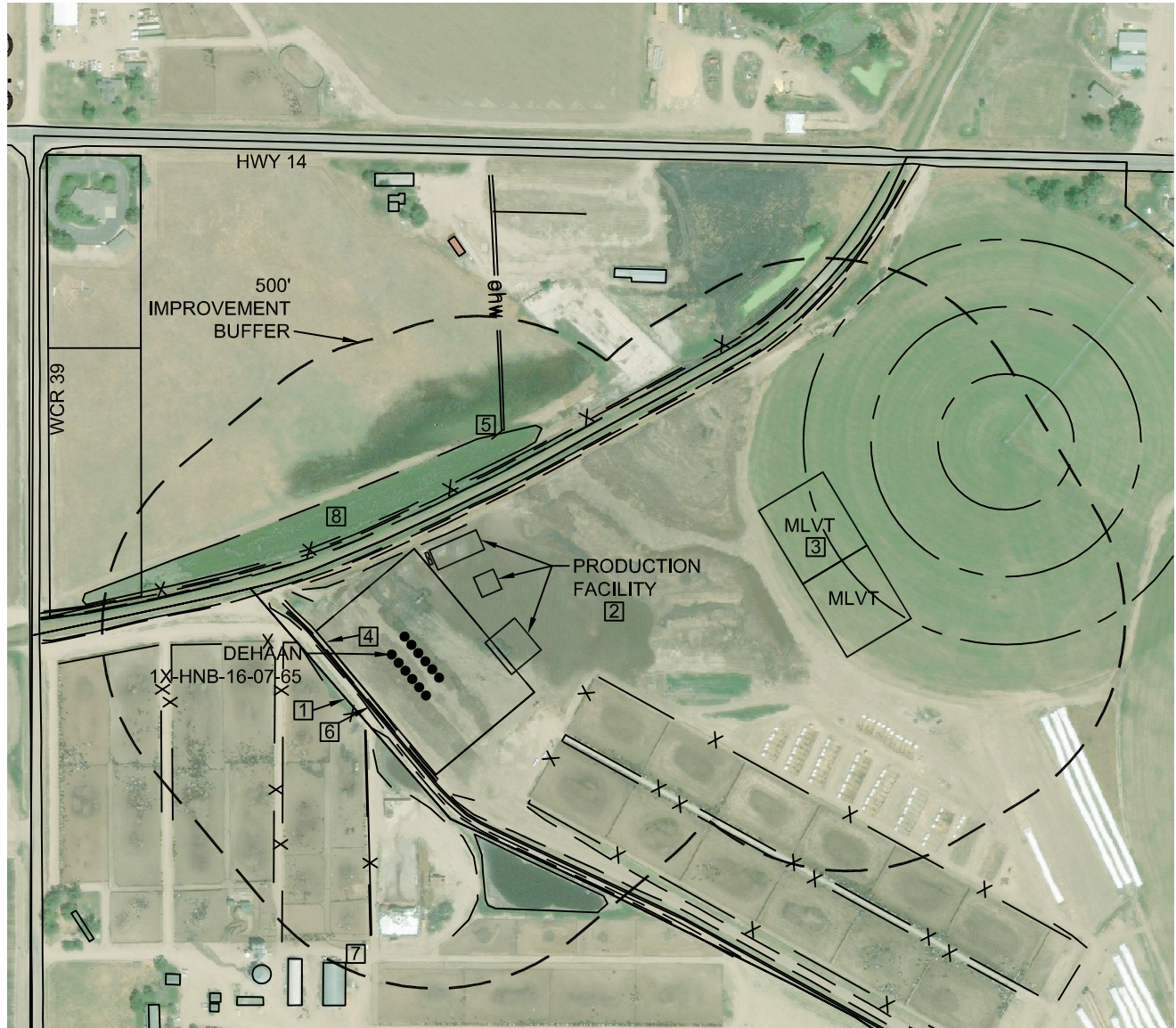


LOCATION DRAWING DEHAAN 7N65W16 NORTH PAD

SECTION: 17
TOWNSHIP: 7N
RANGE: 65W
6TH P.M.
WELD COUNTY, CO



IMPROVEMENTS (MEASUREMENTS ARE FROM THE PROPOSED DEHAAN 1X-HNB-16-07-65 WELL LOCATION)

- [1] PROPERTY LINE: 148' SW & 253' NW
- [2] PROPOSED PRODUCTION FACILITIES: 220' E, 250' NE & 225' NE
- [3] TEMPORARY MLVT PADS: 922' E
- [4] ACCESS: 102' SW, 225' NW & 278' NW
- [5] ABOVE GROUND UTILITY: 553' NE
- [6] DITCH: 113' SW (CONCRETE) & 238' NW (LARIMER & WELD IRR DITCH)
- [7] BUILDING: 729' SW
- [8] RETENTION AREA: 300' NW & 462' SE

LEGEND:

ohw OVERHEAD UTILITY LINE
- - - - - EDGE OF ROAD/ACCESS
- - - - - PROPERTY LINE
- - - - - DITCH
X FENCE LINE



Scale 1" = 400'
0 100 200 400