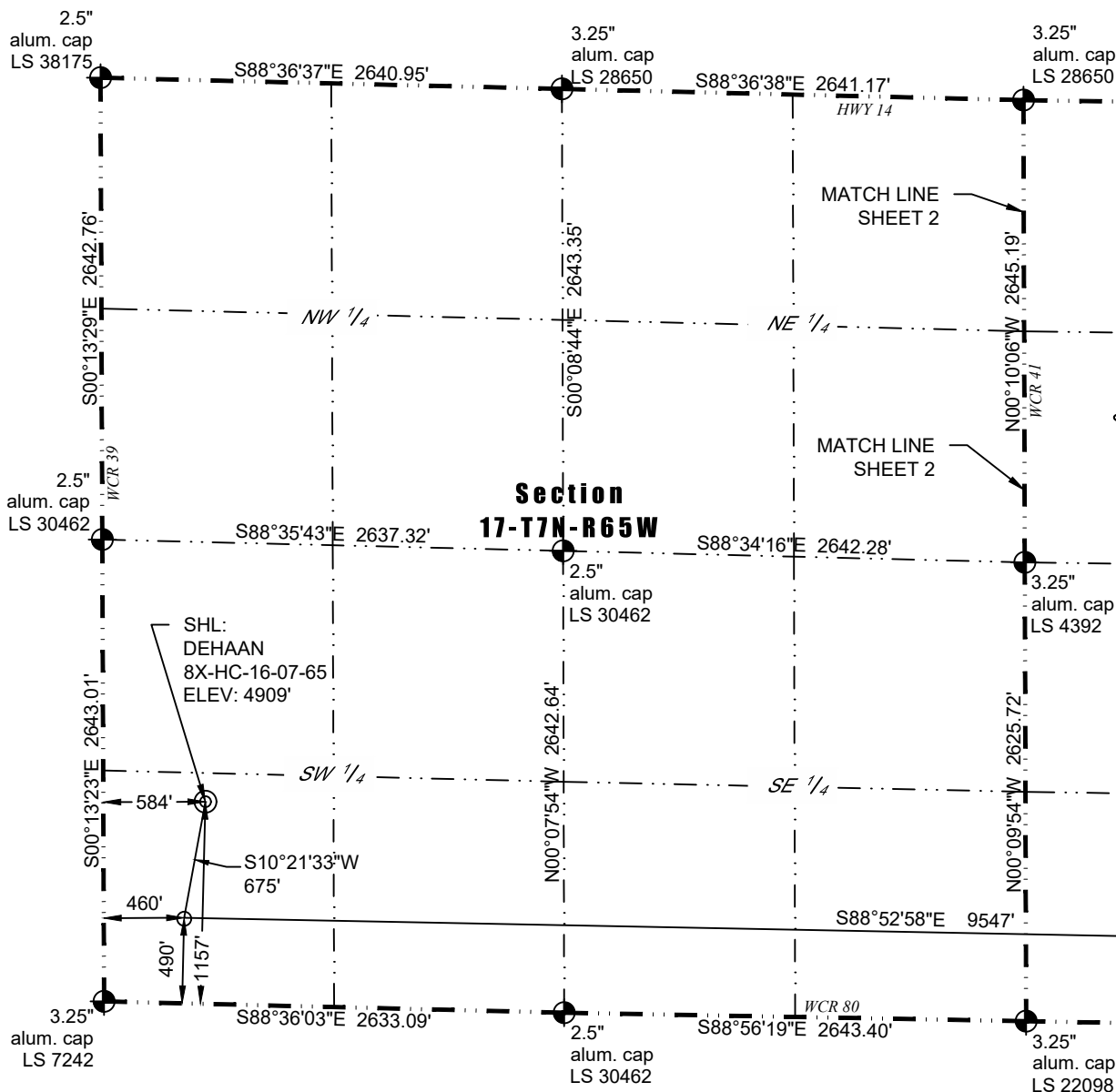


# WELL LOCATION CERTIFICATE

THIS MAP DOES NOT REPRESENT A BOUNDARY SURVEY



In accordance with a request from Kit Tincher of Nickel Road Operating LLC, Washburn Land Surveying, LLC has determined the location of the **DEHAAN 8X-HC-16-07-65** well site to be SHL: 1157' FSL and 584' FWL, (LPL: 490' FSL and 460' FWL, BHL: 491' FSL and 460' FEL), as measured at ninety (90) degrees from the section lines of Section 16 and 17, Township 7 North, Range 65 West of the 6th Principal Meridian, Weld County Colorado.

Proposed Surface Hole Data:  
 Latitude: N 40.570912°  
 Longitude: W 104.694383°  
 PDOP: 1.4

Proposed Landing Point Data:  
 Latitude: N 40.569092°  
 Longitude: W 104.694842°

Proposed Bottom Hole Data:  
 Latitude: N 40.568338°  
 Longitude: W 104.660491°

## LEGEND

- - Found Survey Monument
- - Calculated Location
- ⊙ - Surface Hole Location (SHL)
- - Landing Point Location (LPL)
- × - Bottom Hole Location (BHL)

I hereby certify that this Well Location Certificate was prepared by me or under my direct supervision on 11/15/2018 for and on behalf of Nickel Road Operating LLC. This is not a Land Survey Plat or an Improvement Survey Plat and it is not to be relied upon for establishment of fences, buildings, or other future improvement.

11-15-2018  
 John Robert McGehee LS#3219  
 Well: DEHAAN 8X-HC-16-07-65

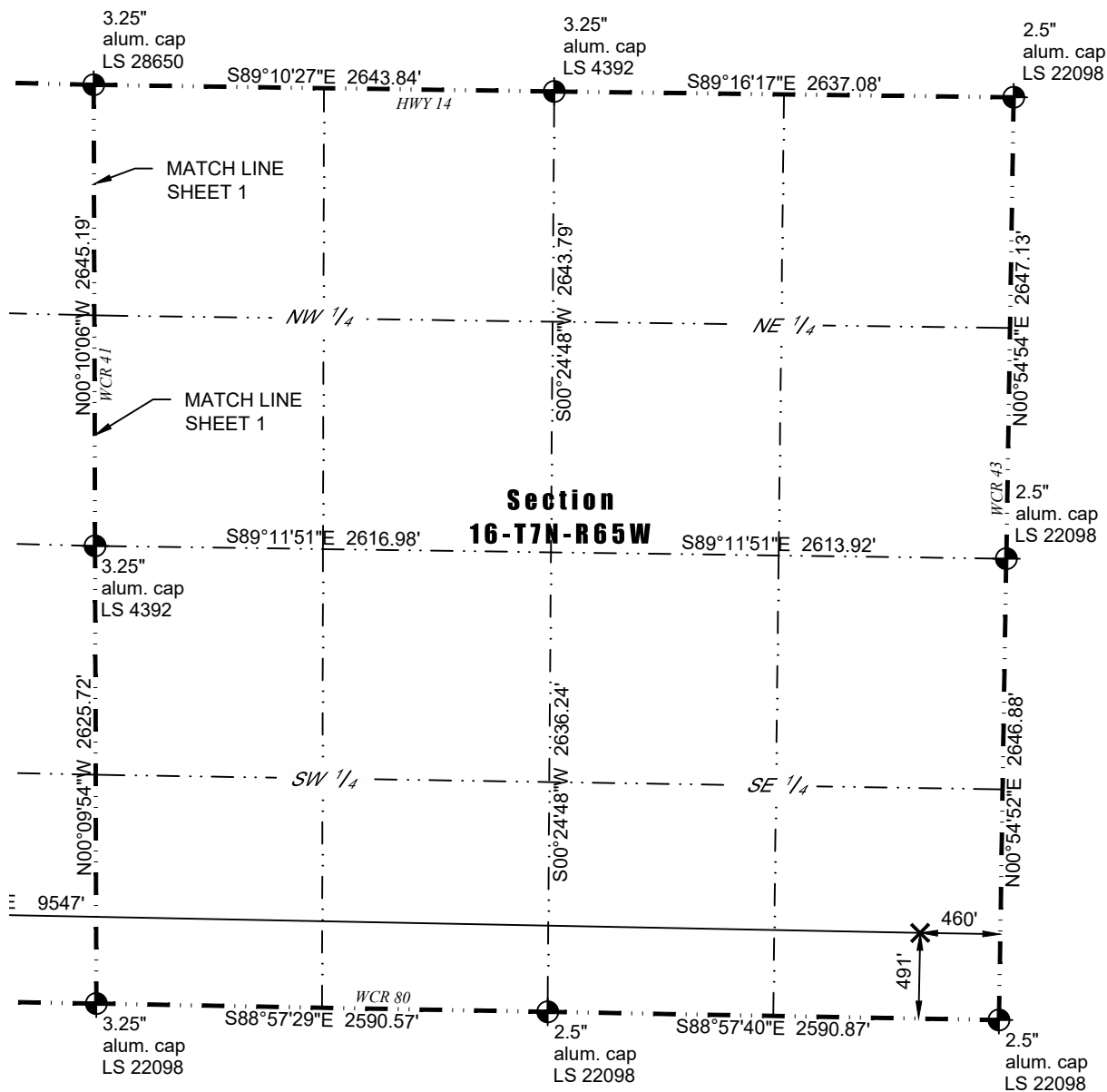
## Notes:

- 1) Bearings and distances based on NAD 83 Colorado North State Plane Coordinate.
- 2) using RTK GPS observations taken 12/07/2017 by operator Jason Dahlman.
- 3) Conversion factor to ground (1.0002574497).
- 4) Elevations based on NAVD 88 GPS heights and Geoid 2009 corrections.
- 5) See Location Drawing for visible improvements within 500 feet of Pad Site.
- 6) The surface use is a cultivated field.

**NOTICE:** According to Colorado law you must commence any legal action based upon any defect in this W.L.C. within three years after you first discover such defect. In no event may any action based upon any defect in this W.L.C. be commenced more than ten years from this said date of the certification shown hereon.

# WELL LOCATION CERTIFICATE

THIS MAP DOES NOT REPRESENT A BOUNDARY SURVEY



## LEGEND

- - Found Survey Monument
- - Calculated Location
- ⊙ - Surface Hole Location (SHL)
- - Landing Point Location (LPL)
- ✕ - Bottom Hole Location (BHL)

NOTICE: According to Colorado law you must commence any legal action based upon any defect in this W.L.C. within three years after you first discover such defect. In no event may any action based upon any defect in this W.L.C. be commenced more than ten years from this said date of the certification shown hereon.