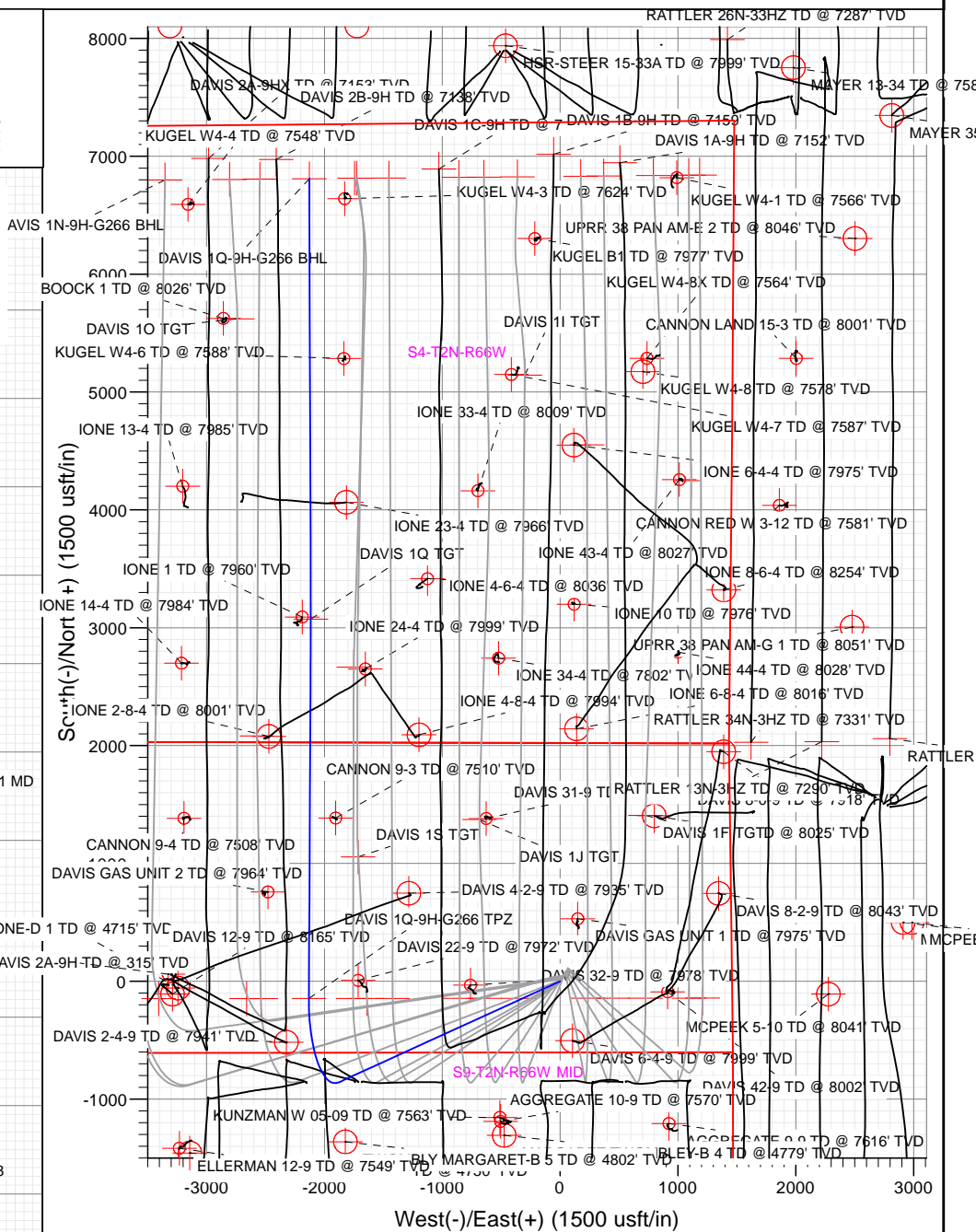
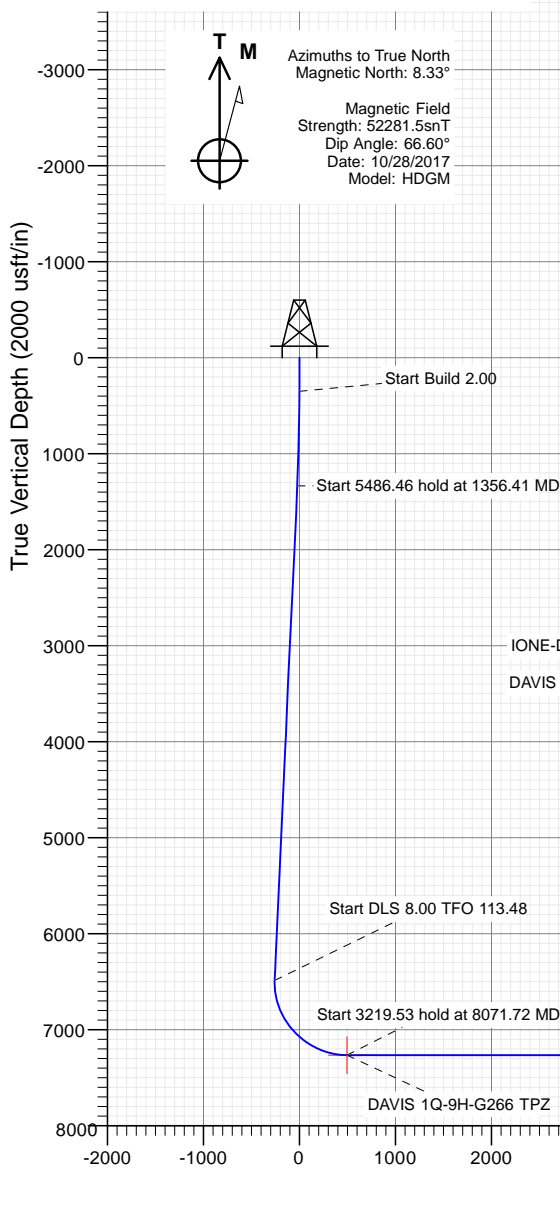




Sec	MD	Inc	Azi	TVD	+N/-S	+E/-W	Dleg	TFace	VSect	Target
1	0.00	0.00	0.00	0.00	0.00	0.00	0.00	0.00	0.00	
2	350.00	0.00	0.00	350.00	0.00	0.00	0.00	0.00	0.00	
3	1356.41	20.13	245.47	1335.84	-72.65	-159.17	2.00	245.47	-21.84	
4	6842.87	20.13	245.47	6487.21	-856.56	-1876.75	0.00	0.00	-257.53	
5	8071.72	90.00	0.30	7265.00	-146.55	-2131.79	8.00	113.48	496.24	DAVIS 1Q-9H-G266 TPZ
6	11291.26	90.00	0.30	7265.00	3072.94	-2115.11	0.00	0.00	3564.08	DAVIS 1Q TGT
7	11316.76	90.00	359.79	7265.00	3098.45	-2115.09	2.00	-90.00	3588.42	
8	15027.87	90.00	359.79	7265.00	6809.53	-2128.91	0.00	0.00	7134.56	DAVIS 1Q-9H-G266 BHL

PLAN #3							
DAVIS 10-QH-G266							
23 KB @ 4940.00							
Ground Level @ 4917.00							
North American Datum 1983							
Well DAVIS 10-QH-G266 - Slot DAVIS 10-QH, True North							
Type	Target	Asmstr	Original	N/S	E/W	From TVD	
TD	No Target (Freehand)	342.64	Sht	0.00	0.00		
Name	TVD	Altitude	E-W	Latitude	Longitude		
DAVIS 10 QT	7265.00	3027.94	-2115.11	40.162709	-104.765568		
DAVIS 10-QH-G266 BHL	7265.00	6800.53	-2128.91	40.162796	-104.765636		
DAVIS 10-QH-G266	7265.00	148.55	-2115.11	40.153871	-104.765612		

Project: DJ BASIN
Site: S4-T2N-R66W
Well: DAVIS 1Q-9H-G266
Wellbore: OH
Design: PLAN #3



Start DLS 2.00 TFO -90.00

TD at 15027.87

DAVIS 1Q TGT

DAVIS 1Q-9H-G26

Vertical Section at 342.64° (2000 usft/in)

WELL DETAILS: DAVIS 1Q-9H-G266

4917.00					
+N/-S	+E/-W	Northing	Easting	Latitude	Longitude
0.00	0.00	1299866.55	3201806.28	40.154273	-104.778017
DAVIS 1Q-9H					



Crestone Peak Resources

DJ BASIN

S4-T2N-R66W

DAVIS 1Q-9H-G266 - Slot DAVIS 1Q-9H

OH

Plan: PLAN #3

Standard Planning Report

11 January, 2018

Cathedral Energy Services

Planning Report

Database:	USA EDM 5000 Multi Users DB	Local Co-ordinate Reference:	Well DAVIS 1Q-9H-G266 - Slot DAVIS 1Q-9H
Company:	Crestone Peak Resources	TVD Reference:	23' KB @ 4940.00usft
Project:	DJ BASIN	MD Reference:	23' KB @ 4940.00usft
Site:	S4-T2N-R66W	North Reference:	True
Well:	DAVIS 1Q-9H-G266	Survey Calculation Method:	Minimum Curvature
Wellbore:	OH		
Design:	PLAN #3		

Project	DJ BASIN		
Map System:	US State Plane 1983	System Datum:	Mean Sea Level
Geo Datum:	North American Datum 1983		
Map Zone:	Colorado Northern Zone		

Site		S4-T2N-R66W			
Site Position:		Northing:	1,300,048.95 usft	Latitude:	40.154783
From:	Map	Easting:	3,201,389.75 usft	Longitude:	-104.779502
Position Uncertainty:	0.00 usft	Slot Radius:	13-3/16 "	Grid Convergence:	0.47 °

Well	DAVIS 1Q-9H-G266 - Slot DAVIS 1Q-9H					
Well Position	+N/-S	-185.77 usft	Northing:	1,299,866.55 usft	Latitude:	40.154273
	+E/-W	415.04 usft	Easting:	3,201,806.28 usft	Longitude:	-104.778017
Position Uncertainty		0.00 usft	Wellhead Elevation:		Ground Level:	4,917.00 usft

Wellbore	OH				
Magnetics	Model Name	Sample Date	Declination (°)	Dip Angle (°)	Field Strength (nT)
	HDGM	10/28/2017	8.33	66.60	52,281.50000000

Design	PLAN #3			
Audit Notes:				
Version:	Phase:	PLAN	Tie On Depth:	0.00
Vertical Section:	Depth From (TVD) (usft)	+N/-S (usft)	+E/-W (usft)	Direction (°)
	0.00	0.00	0.00	342.64

Plan Sections										
Measured Depth (usft)	Inclination (°)	Azimuth (°)	Vertical Depth (usft)	+N/-S (usft)	+E/-W (usft)	Dogleg Rate (°/100usft)	Build Rate (°/100usft)	Turn Rate (°/100usft)	TFO (°)	Target
0.00	0.00	0.00	0.00	0.00	0.00	0.00	0.00	0.00	0.00	
350.00	0.00	0.00	350.00	0.00	0.00	0.00	0.00	0.00	0.00	
1,356.41	20.13	245.47	1,335.84	-72.65	-159.17	2.00	2.00	0.00	245.47	
6,842.87	20.13	245.47	6,487.21	-856.56	-1,876.75	0.00	0.00	0.00	0.00	
8,071.72	90.00	0.30	7,265.00	-146.55	-2,131.79	8.00	5.69	9.34	113.48	DAVIS 1Q-9H-G266 T
11,291.26	90.00	0.30	7,265.00	3,072.94	-2,115.11	0.00	0.00	0.00	0.00	DAVIS 1Q TGT
11,316.76	90.00	359.79	7,265.00	3,098.45	-2,115.09	2.00	0.00	-2.00	-90.00	
15,027.87	90.00	359.79	7,265.00	6,809.53	-2,128.91	0.00	0.00	0.00	0.00	DAVIS 1Q-9H-G266 E

Cathedral Energy Services

Planning Report

Database:	USA EDM 5000 Multi Users DB	Local Co-ordinate Reference:	Well DAVIS 1Q-9H-G266 - Slot DAVIS 1Q-9H
Company:	Crestone Peak Resources	TVD Reference:	23' KB @ 4940.00usft
Project:	DJ BASIN	MD Reference:	23' KB @ 4940.00usft
Site:	S4-T2N-R66W	North Reference:	True
Well:	DAVIS 1Q-9H-G266	Survey Calculation Method:	Minimum Curvature
Wellbore:	OH		
Design:	PLAN #3		

Planned Survey									
Measured Depth (usft)	Inclination (°)	Azimuth (°)	Vertical Depth (usft)	+N/-S (usft)	+E/-W (usft)	Vertical Section (usft)	Dogleg Rate (°/100usft)	Build Rate (°/100usft)	Turn Rate (°/100usft)
0.00	0.00	0.00	0.00	0.00	0.00	0.00	0.00	0.00	0.00
100.00	0.00	0.00	100.00	0.00	0.00	0.00	0.00	0.00	0.00
200.00	0.00	0.00	200.00	0.00	0.00	0.00	0.00	0.00	0.00
300.00	0.00	0.00	300.00	0.00	0.00	0.00	0.00	0.00	0.00
350.00	0.00	0.00	350.00	0.00	0.00	0.00	0.00	0.00	0.00
400.00	1.00	245.47	400.00	-0.18	-0.40	-0.05	2.00	2.00	0.00
500.00	3.00	245.47	499.93	-1.63	-3.57	-0.49	2.00	2.00	0.00
600.00	5.00	245.47	599.68	-4.53	-9.92	-1.36	2.00	2.00	0.00
700.00	7.00	245.47	699.13	-8.87	-19.43	-2.67	2.00	2.00	0.00
800.00	9.00	245.47	798.15	-14.64	-32.09	-4.40	2.00	2.00	0.00
900.00	11.00	245.47	896.63	-21.85	-47.88	-6.57	2.00	2.00	0.00
1,000.00	13.00	245.47	994.44	-30.49	-66.80	-9.17	2.00	2.00	0.00
1,100.00	15.00	245.47	1,091.46	-40.53	-88.80	-12.19	2.00	2.00	0.00
1,200.00	17.00	245.47	1,187.58	-51.97	-113.88	-15.63	2.00	2.00	0.00
1,300.00	19.00	245.47	1,282.68	-64.80	-141.99	-19.48	2.00	2.00	0.00
1,356.41	20.13	245.47	1,335.84	-72.65	-159.17	-21.84	2.00	2.00	0.00
1,400.00	20.13	245.47	1,376.76	-78.88	-172.82	-23.71	0.00	0.00	0.00
1,500.00	20.13	245.47	1,470.66	-93.16	-204.12	-28.01	0.00	0.00	0.00
1,600.00	20.13	245.47	1,564.55	-107.45	-235.43	-32.31	0.00	0.00	0.00
1,700.00	20.13	245.47	1,658.44	-121.74	-266.74	-36.60	0.00	0.00	0.00
1,800.00	20.13	245.47	1,752.33	-136.03	-298.04	-40.90	0.00	0.00	0.00
1,900.00	20.13	245.47	1,846.23	-150.32	-329.35	-45.19	0.00	0.00	0.00
2,000.00	20.13	245.47	1,940.12	-164.60	-360.65	-49.49	0.00	0.00	0.00
2,100.00	20.13	245.47	2,034.01	-178.89	-391.96	-53.78	0.00	0.00	0.00
2,200.00	20.13	245.47	2,127.90	-193.18	-423.26	-58.08	0.00	0.00	0.00
2,300.00	20.13	245.47	2,221.80	-207.47	-454.57	-62.38	0.00	0.00	0.00
2,400.00	20.13	245.47	2,315.69	-221.76	-485.88	-66.67	0.00	0.00	0.00
2,500.00	20.13	245.47	2,409.58	-236.05	-517.18	-70.97	0.00	0.00	0.00
2,600.00	20.13	245.47	2,503.47	-250.33	-548.49	-75.26	0.00	0.00	0.00
2,700.00	20.13	245.47	2,597.37	-264.62	-579.79	-79.56	0.00	0.00	0.00
2,800.00	20.13	245.47	2,691.26	-278.91	-611.10	-83.85	0.00	0.00	0.00
2,900.00	20.13	245.47	2,785.15	-293.20	-642.40	-88.15	0.00	0.00	0.00
3,000.00	20.13	245.47	2,879.04	-307.49	-673.71	-92.45	0.00	0.00	0.00
3,100.00	20.13	245.47	2,972.94	-321.77	-705.01	-96.74	0.00	0.00	0.00
3,200.00	20.13	245.47	3,066.83	-336.06	-736.32	-101.04	0.00	0.00	0.00
3,300.00	20.13	245.47	3,160.72	-350.35	-767.63	-105.33	0.00	0.00	0.00
3,400.00	20.13	245.47	3,254.61	-364.64	-798.93	-109.63	0.00	0.00	0.00
3,500.00	20.13	245.47	3,348.51	-378.93	-830.24	-113.93	0.00	0.00	0.00
3,600.00	20.13	245.47	3,442.40	-393.21	-861.54	-118.22	0.00	0.00	0.00
3,700.00	20.13	245.47	3,536.29	-407.50	-892.85	-122.52	0.00	0.00	0.00
3,800.00	20.13	245.47	3,630.18	-421.79	-924.15	-126.81	0.00	0.00	0.00
3,900.00	20.13	245.47	3,724.08	-436.08	-955.46	-131.11	0.00	0.00	0.00
4,000.00	20.13	245.47	3,817.97	-450.37	-986.77	-135.40	0.00	0.00	0.00
4,100.00	20.13	245.47	3,911.86	-464.66	-1,018.07	-139.70	0.00	0.00	0.00
4,200.00	20.13	245.47	4,005.75	-478.94	-1,049.38	-144.00	0.00	0.00	0.00
4,300.00	20.13	245.47	4,099.65	-493.23	-1,080.68	-148.29	0.00	0.00	0.00
4,400.00	20.13	245.47	4,193.54	-507.52	-1,111.99	-152.59	0.00	0.00	0.00
4,500.00	20.13	245.47	4,287.43	-521.81	-1,143.29	-156.88	0.00	0.00	0.00
4,600.00	20.13	245.47	4,381.32	-536.10	-1,174.60	-161.18	0.00	0.00	0.00
4,700.00	20.13	245.47	4,475.22	-550.38	-1,205.91	-165.47	0.00	0.00	0.00
4,800.00	20.13	245.47	4,569.11	-564.67	-1,237.21	-169.77	0.00	0.00	0.00
4,900.00	20.13	245.47	4,663.00	-578.96	-1,268.52	-174.07	0.00	0.00	0.00
5,000.00	20.13	245.47	4,756.89	-593.25	-1,299.82	-178.36	0.00	0.00	0.00
5,100.00	20.13	245.47	4,850.79	-607.54	-1,331.13	-182.66	0.00	0.00	0.00

Cathedral Energy Services

Planning Report

Database:	USA EDM 5000 Multi Users DB	Local Co-ordinate Reference:	Well DAVIS 1Q-9H-G266 - Slot DAVIS 1Q-9H
Company:	Crestone Peak Resources	TVD Reference:	23' KB @ 4940.00usft
Project:	DJ BASIN	MD Reference:	23' KB @ 4940.00usft
Site:	S4-T2N-R66W	North Reference:	True
Well:	DAVIS 1Q-9H-G266	Survey Calculation Method:	Minimum Curvature
Wellbore:	OH		
Design:	PLAN #3		

Planned Survey									
Measured Depth (usft)	Inclination (°)	Azimuth (°)	Vertical Depth (usft)	+N/-S (usft)	+E/-W (usft)	Vertical Section (usft)	Dogleg Rate (°/100usft)	Build Rate (°/100usft)	Turn Rate (°/100usft)
5,200.00	20.13	245.47	4,944.68	-621.82	-1,362.43	-186.95	0.00	0.00	0.00
5,300.00	20.13	245.47	5,038.57	-636.11	-1,393.74	-191.25	0.00	0.00	0.00
5,400.00	20.13	245.47	5,132.46	-650.40	-1,425.05	-195.54	0.00	0.00	0.00
5,500.00	20.13	245.47	5,226.36	-664.69	-1,456.35	-199.84	0.00	0.00	0.00
5,600.00	20.13	245.47	5,320.25	-678.98	-1,487.66	-204.14	0.00	0.00	0.00
5,700.00	20.13	245.47	5,414.14	-693.27	-1,518.96	-208.43	0.00	0.00	0.00
5,800.00	20.13	245.47	5,508.03	-707.55	-1,550.27	-212.73	0.00	0.00	0.00
5,900.00	20.13	245.47	5,601.93	-721.84	-1,581.57	-217.02	0.00	0.00	0.00
6,000.00	20.13	245.47	5,695.82	-736.13	-1,612.88	-221.32	0.00	0.00	0.00
6,100.00	20.13	245.47	5,789.71	-750.42	-1,644.19	-225.62	0.00	0.00	0.00
6,200.00	20.13	245.47	5,883.61	-764.71	-1,675.49	-229.91	0.00	0.00	0.00
6,300.00	20.13	245.47	5,977.50	-778.99	-1,706.80	-234.21	0.00	0.00	0.00
6,400.00	20.13	245.47	6,071.39	-793.28	-1,738.10	-238.50	0.00	0.00	0.00
6,500.00	20.13	245.47	6,165.28	-807.57	-1,769.41	-242.80	0.00	0.00	0.00
6,600.00	20.13	245.47	6,259.18	-821.86	-1,800.71	-247.09	0.00	0.00	0.00
6,700.00	20.13	245.47	6,353.07	-836.15	-1,832.02	-251.39	0.00	0.00	0.00
6,800.00	20.13	245.47	6,446.96	-850.43	-1,863.32	-255.69	0.00	0.00	0.00
6,842.87	20.13	245.47	6,487.21	-856.56	-1,876.75	-257.53	0.00	0.00	0.00
6,900.00	18.76	258.60	6,541.11	-862.46	-1,894.70	-257.80	8.00	-2.39	22.99
7,000.00	18.87	283.58	6,635.92	-861.84	-1,926.24	-247.80	8.00	0.11	24.98
7,100.00	21.99	304.85	6,729.75	-847.32	-1,957.37	-224.65	8.00	3.12	21.27
7,200.00	27.11	319.77	6,820.76	-819.18	-1,987.50	-188.80	8.00	5.11	14.92
7,300.00	33.30	329.88	6,907.20	-777.98	-2,016.04	-140.96	8.00	6.20	10.11
7,400.00	40.08	337.02	6,987.37	-724.50	-2,042.43	-82.05	8.00	6.78	7.14
7,500.00	47.19	342.35	7,059.72	-659.80	-2,066.16	-13.21	8.00	7.11	5.34
7,600.00	54.50	346.57	7,122.84	-585.14	-2,086.77	64.20	8.00	7.30	4.22
7,700.00	61.92	350.08	7,175.50	-501.96	-2,103.86	148.69	8.00	7.43	3.51
7,800.00	69.43	353.12	7,216.67	-411.88	-2,117.08	238.61	8.00	7.50	3.05
7,900.00	76.98	355.88	7,245.56	-316.66	-2,126.20	332.21	8.00	7.55	2.76
8,000.00	84.56	358.48	7,261.60	-218.16	-2,131.02	427.67	8.00	7.58	2.60
8,071.72	90.00	0.30	7,265.00	-146.55	-2,131.79	496.24	8.00	7.59	2.53
DAVIS 1Q-9H-G266 TPZ									
8,100.00	90.00	0.30	7,265.00	-118.27	-2,131.64	523.18	0.00	0.00	0.00
8,200.00	90.00	0.30	7,265.00	-18.27	-2,131.12	618.47	0.00	0.00	0.00
8,300.00	90.00	0.30	7,265.00	81.72	-2,130.60	713.76	0.00	0.00	0.00
8,400.00	90.00	0.30	7,265.00	181.72	-2,130.09	809.05	0.00	0.00	0.00
8,500.00	90.00	0.30	7,265.00	281.72	-2,129.57	904.34	0.00	0.00	0.00
8,600.00	90.00	0.30	7,265.00	381.72	-2,129.05	999.63	0.00	0.00	0.00
8,700.00	90.00	0.30	7,265.00	481.72	-2,128.53	1,094.91	0.00	0.00	0.00
8,800.00	90.00	0.30	7,265.00	581.72	-2,128.01	1,190.20	0.00	0.00	0.00
8,900.00	90.00	0.30	7,265.00	681.72	-2,127.50	1,285.49	0.00	0.00	0.00
9,000.00	90.00	0.30	7,265.00	781.71	-2,126.98	1,380.78	0.00	0.00	0.00
9,100.00	90.00	0.30	7,265.00	881.71	-2,126.46	1,476.07	0.00	0.00	0.00
9,200.00	90.00	0.30	7,265.00	981.71	-2,125.94	1,571.36	0.00	0.00	0.00
9,300.00	90.00	0.30	7,265.00	1,081.71	-2,125.42	1,666.65	0.00	0.00	0.00
9,400.00	90.00	0.30	7,265.00	1,181.71	-2,124.91	1,761.93	0.00	0.00	0.00
9,500.00	90.00	0.30	7,265.00	1,281.71	-2,124.39	1,857.22	0.00	0.00	0.00
9,600.00	90.00	0.30	7,265.00	1,381.71	-2,123.87	1,952.51	0.00	0.00	0.00
9,700.00	90.00	0.30	7,265.00	1,481.71	-2,123.35	2,047.80	0.00	0.00	0.00
9,800.00	90.00	0.30	7,265.00	1,581.70	-2,122.84	2,143.09	0.00	0.00	0.00
9,900.00	90.00	0.30	7,265.00	1,681.70	-2,122.32	2,238.38	0.00	0.00	0.00
10,000.00	90.00	0.30	7,265.00	1,781.70	-2,121.80	2,333.66	0.00	0.00	0.00
10,100.00	90.00	0.30	7,265.00	1,881.70	-2,121.28	2,428.95	0.00	0.00	0.00

Cathedral Energy Services

Planning Report

Database:	USA EDM 5000 Multi Users DB	Local Co-ordinate Reference:	Well DAVIS 1Q-9H-G266 - Slot DAVIS 1Q-9H
Company:	Crestone Peak Resources	TVD Reference:	23' KB @ 4940.00usft
Project:	DJ BASIN	MD Reference:	23' KB @ 4940.00usft
Site:	S4-T2N-R66W	North Reference:	True
Well:	DAVIS 1Q-9H-G266	Survey Calculation Method:	Minimum Curvature
Wellbore:	OH		
Design:	PLAN #3		

Planned Survey									
Measured Depth (usft)	Inclination (°)	Azimuth (°)	Vertical Depth (usft)	+N/-S (usft)	+E/-W (usft)	Vertical Section (usft)	Dogleg Rate (°/100usft)	Build Rate (°/100usft)	Turn Rate (°/100usft)
10,200.00	90.00	0.30	7,265.00	1,981.70	-2,120.76	2,524.24	0.00	0.00	0.00
10,300.00	90.00	0.30	7,265.00	2,081.70	-2,120.25	2,619.53	0.00	0.00	0.00
10,400.00	90.00	0.30	7,265.00	2,181.70	-2,119.73	2,714.82	0.00	0.00	0.00
10,500.00	90.00	0.30	7,265.00	2,281.69	-2,119.21	2,810.11	0.00	0.00	0.00
10,600.00	90.00	0.30	7,265.00	2,381.69	-2,118.69	2,905.40	0.00	0.00	0.00
10,700.00	90.00	0.30	7,265.00	2,481.69	-2,118.17	3,000.68	0.00	0.00	0.00
10,800.00	90.00	0.30	7,265.00	2,581.69	-2,117.66	3,095.97	0.00	0.00	0.00
10,900.00	90.00	0.30	7,265.00	2,681.69	-2,117.14	3,191.26	0.00	0.00	0.00
11,000.00	90.00	0.30	7,265.00	2,781.69	-2,116.62	3,286.55	0.00	0.00	0.00
11,100.00	90.00	0.30	7,265.00	2,881.69	-2,116.10	3,381.84	0.00	0.00	0.00
11,200.00	90.00	0.30	7,265.00	2,981.68	-2,115.58	3,477.13	0.00	0.00	0.00
11,291.26	90.00	0.30	7,265.00	3,072.94	-2,115.11	3,564.08	0.00	0.00	0.00
DAVIS 1Q TGT									
11,300.00	90.00	0.12	7,265.00	3,081.68	-2,115.08	3,572.42	2.00	0.00	-2.00
11,316.76	90.00	359.79	7,265.00	3,098.45	-2,115.09	3,588.42	2.00	0.00	-2.00
11,400.00	90.00	359.79	7,265.00	3,181.68	-2,115.40	3,667.96	0.00	0.00	0.00
11,500.00	90.00	359.79	7,265.00	3,281.68	-2,115.78	3,763.51	0.00	0.00	0.00
11,600.00	90.00	359.79	7,265.00	3,381.68	-2,116.15	3,859.07	0.00	0.00	0.00
11,700.00	90.00	359.79	7,265.00	3,481.68	-2,116.52	3,954.62	0.00	0.00	0.00
11,800.00	90.00	359.79	7,265.00	3,581.68	-2,116.89	4,050.18	0.00	0.00	0.00
11,900.00	90.00	359.79	7,265.00	3,681.68	-2,117.27	4,145.73	0.00	0.00	0.00
12,000.00	90.00	359.79	7,265.00	3,781.68	-2,117.64	4,241.29	0.00	0.00	0.00
12,100.00	90.00	359.79	7,265.00	3,881.68	-2,118.01	4,336.84	0.00	0.00	0.00
12,200.00	90.00	359.79	7,265.00	3,981.68	-2,118.38	4,432.40	0.00	0.00	0.00
12,300.00	90.00	359.79	7,265.00	4,081.68	-2,118.75	4,527.95	0.00	0.00	0.00
12,400.00	90.00	359.79	7,265.00	4,181.68	-2,119.13	4,623.51	0.00	0.00	0.00
12,500.00	90.00	359.79	7,265.00	4,281.68	-2,119.50	4,719.06	0.00	0.00	0.00
12,600.00	90.00	359.79	7,265.00	4,381.67	-2,119.87	4,814.62	0.00	0.00	0.00
12,700.00	90.00	359.79	7,265.00	4,481.67	-2,120.24	4,910.17	0.00	0.00	0.00
12,800.00	90.00	359.79	7,265.00	4,581.67	-2,120.62	5,005.72	0.00	0.00	0.00
12,900.00	90.00	359.79	7,265.00	4,681.67	-2,120.99	5,101.28	0.00	0.00	0.00
13,000.00	90.00	359.79	7,265.00	4,781.67	-2,121.36	5,196.83	0.00	0.00	0.00
13,100.00	90.00	359.79	7,265.00	4,881.67	-2,121.73	5,292.39	0.00	0.00	0.00
13,200.00	90.00	359.79	7,265.00	4,981.67	-2,122.11	5,387.94	0.00	0.00	0.00
13,300.00	90.00	359.79	7,265.00	5,081.67	-2,122.48	5,483.50	0.00	0.00	0.00
13,400.00	90.00	359.79	7,265.00	5,181.67	-2,122.85	5,579.05	0.00	0.00	0.00
13,500.00	90.00	359.79	7,265.00	5,281.67	-2,123.22	5,674.61	0.00	0.00	0.00
13,600.00	90.00	359.79	7,265.00	5,381.67	-2,123.60	5,770.16	0.00	0.00	0.00
13,700.00	90.00	359.79	7,265.00	5,481.67	-2,123.97	5,865.72	0.00	0.00	0.00
13,800.00	90.00	359.79	7,265.00	5,581.67	-2,124.34	5,961.27	0.00	0.00	0.00
13,900.00	90.00	359.79	7,265.00	5,681.67	-2,124.71	6,056.83	0.00	0.00	0.00
14,000.00	90.00	359.79	7,265.00	5,781.67	-2,125.09	6,152.38	0.00	0.00	0.00
14,100.00	90.00	359.79	7,265.00	5,881.66	-2,125.46	6,247.94	0.00	0.00	0.00
14,200.00	90.00	359.79	7,265.00	5,981.66	-2,125.83	6,343.49	0.00	0.00	0.00
14,300.00	90.00	359.79	7,265.00	6,081.66	-2,126.20	6,439.05	0.00	0.00	0.00
14,400.00	90.00	359.79	7,265.00	6,181.66	-2,126.57	6,534.60	0.00	0.00	0.00
14,500.00	90.00	359.79	7,265.00	6,281.66	-2,126.95	6,630.15	0.00	0.00	0.00
14,600.00	90.00	359.79	7,265.00	6,381.66	-2,127.32	6,725.71	0.00	0.00	0.00
14,700.00	90.00	359.79	7,265.00	6,481.66	-2,127.69	6,821.26	0.00	0.00	0.00
14,800.00	90.00	359.79	7,265.00	6,581.66	-2,128.06	6,916.82	0.00	0.00	0.00
14,900.00	90.00	359.79	7,265.00	6,681.66	-2,128.44	7,012.37	0.00	0.00	0.00
15,000.00	90.00	359.79	7,265.00	6,781.66	-2,128.81	7,107.93	0.00	0.00	0.00
15,027.87	90.00	359.79	7,265.00	6,809.53	-2,128.91	7,134.56	0.00	0.00	0.00
DAVIS 1Q-9H-G266 BHL									

Cathedral Energy Services

Planning Report

Database:	USA EDM 5000 Multi Users DB	Local Co-ordinate Reference:	Well DAVIS 1Q-9H-G266 - Slot DAVIS 1Q-9H
Company:	Crestone Peak Resources	TVD Reference:	23' KB @ 4940.00usft
Project:	DJ BASIN	MD Reference:	23' KB @ 4940.00usft
Site:	S4-T2N-R66W	North Reference:	True
Well:	DAVIS 1Q-9H-G266	Survey Calculation Method:	Minimum Curvature
Wellbore:	OH		
Design:	PLAN #3		

Planned Survey									
Measured Depth (usft)	Inclination (°)	Azimuth (°)	Vertical Depth (usft)	+N/-S (usft)	+E/-W (usft)	Vertical Section (usft)	Dogleg Rate (°/100usft)	Build Rate (°/100usft)	Turn Rate (°/100usft)

Design Targets									
Target Name - hit/miss target - Shape	Dip Angle (°)	Dip Dir. (°)	TVD (usft)	+N/-S (usft)	+E/-W (usft)	Northing (usft)	Easting (usft)	Latitude	Longitude
DAVIS 1Q-9H-G266 TP2 - plan hits target center - Point	0.00	0.00	7,265.00	-146.55	-2,131.79	1,299,702.65	3,199,675.76	40.153871	-104.785644
DAVIS 1Q-9H-G266 BHI - plan hits target center - Point	0.00	0.00	7,265.00	6,809.53	-2,128.91	1,306,658.52	3,199,622.00	40.172966	-104.785636
DAVIS 1Q TGT - plan hits target center - Point	0.00	0.00	7,265.00	3,072.94	-2,115.11	1,302,922.17	3,199,666.22	40.162709	-104.785585