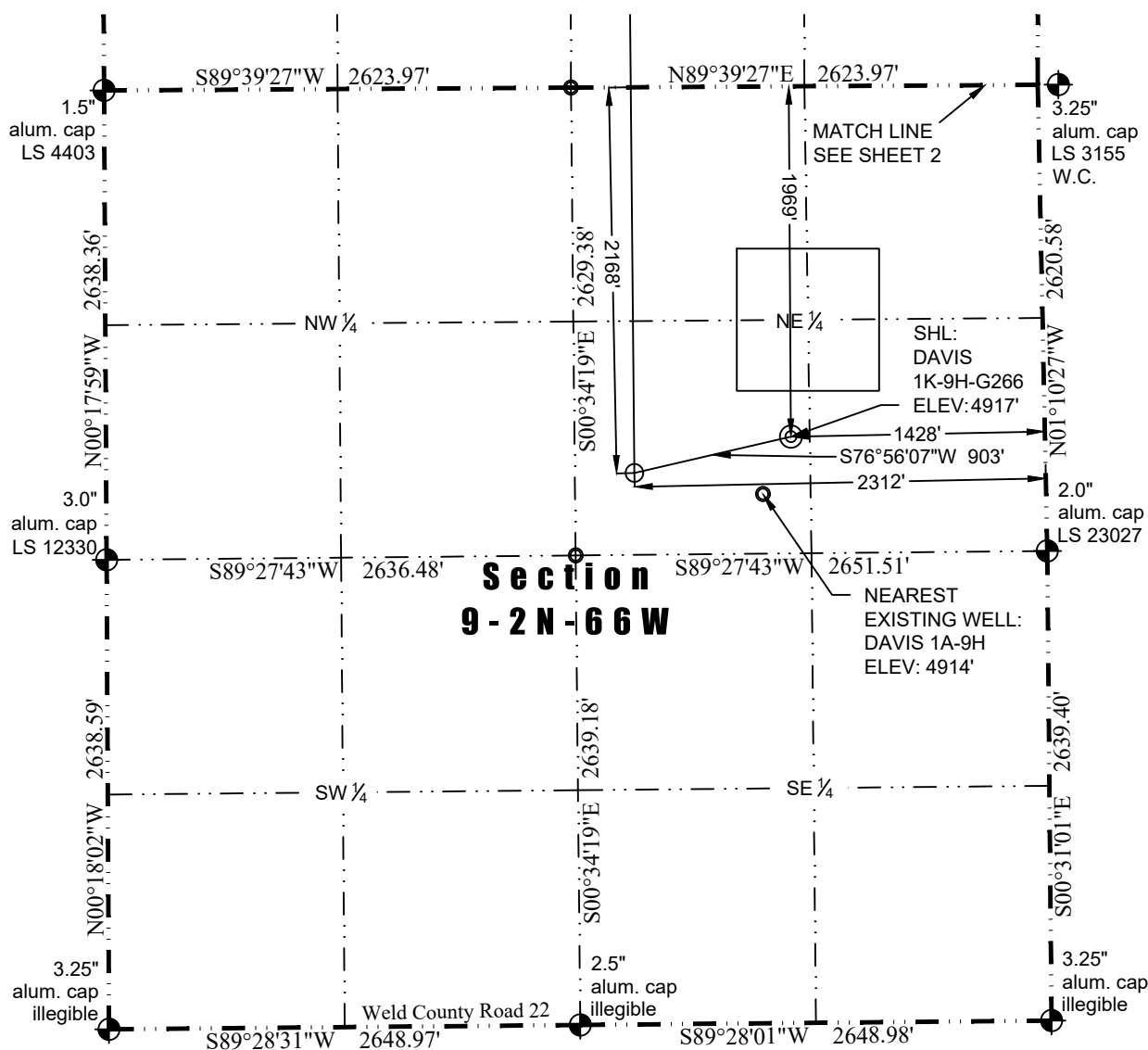




WELL LOCATION CERTIFICATE

THIS MAP DOES NOT REPRESENT A BOUNDARY SURVEY

Washburn Land Surveying
www.WashburnSurveying.com
970-232-9645



In accordance with a request from Jay Knutson of Crestone Peak Resources, Washburn Land Surveying, LLC has determined the location of the **DAVIS 1K-9H-G266** well site to be SHL: 1969' FNL and 1428' FEL, (TPZ: 2168' FNL and 2312' FEL), (BHL: 460' FNL and 2334' FEL), as measured at ninety (90) degrees from the section lines of Sections 9 and 4, Township 2 North, Range 66 West of the 6th Principal Meridian, Weld County Colorado.

Proposed Surface Hole Data:

Latitude: N 40.154416°
Longitude: W 104.777911°
PDOP: 1.4

Proposed TPZ Data:

Latitude: N 40.153875°
Longitude: W 104.781065°

Proposed Bottom Hole Data:

Latitude: N 40.172998°
Longitude: W 104.781094°

LEGEND

- - Found Survey Monument
- - Calculated Position
- ⊙ - Surface Hole Location (SHL)
- - Top of Producing Zone (TPZ)
- × - Bottom Hole Location (BHL)

Nearest Cultural Items:

Building: 1020' NE
Building Unit: 1093' E
Above Ground Utility: 647' N
Public Road: 1401' E
Existing Well: 359' SW

Well Window: 257' Outside
Property Line: 656' S
Railroad: +5280'
High Occupancy Building Unit: +5280'
Designated Outside Activity Area: +5280'

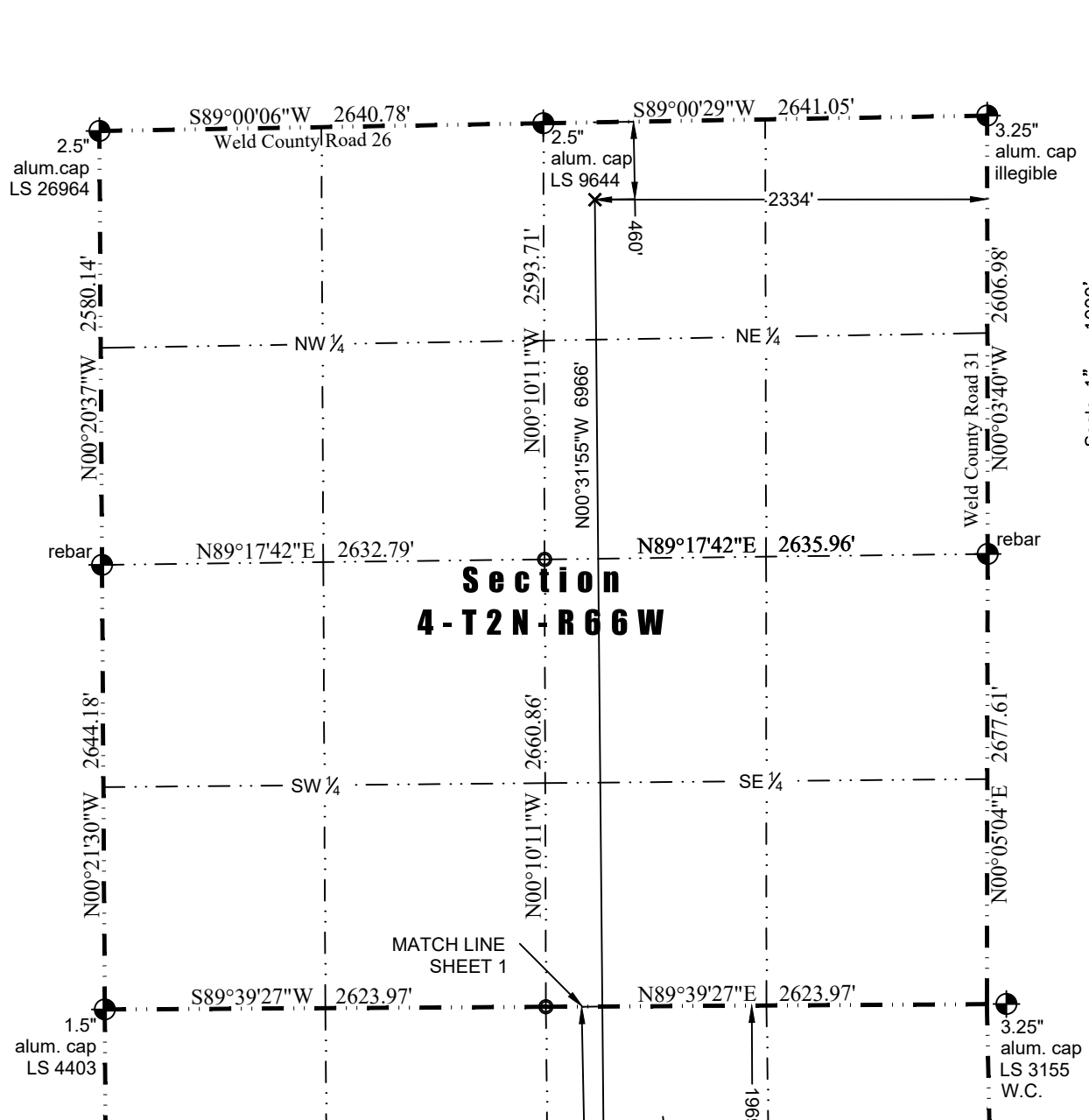
Notes:

- 1) Bearings and distances based on NAD 83 Colorado North State Plane Coordinate.
- 2) using RTK GPS observations taken 12/26/17 by operator Jason Dahlan.
- 3) Conversion factor to ground (1.0002753983).
- 4) Elevations based on NAVD 88 GPS heights and Geoid 2009 corrections.
- 5) See Location Drawing for visible improvements within 500 feet of Pad Site.
- 6) The surface use is a cultivated field.

NOTICE: According to Colorado law you must commence any legal action based upon any defect in this W.L.C. within three years after you first discover such defect. In no event may any action based upon any defect in this W.L.C. be commenced more than ten years from this said date of the certification shown hereon.

I hereby certify that this Well Location Certificate was prepared by me or under my direct supervision on 12-27-2017 for and on behalf of Crestone Peak Resources, Inc. and its Land Surveyor, and that I am a duly Licensed Professional Surveyor in the State of Colorado and that this map is not to be relied upon for establishment of fences, buildings, or other future improvement lines.

John Robert McGhee LS#385
Well: DAVIS 1K-9H-G266



LEGEND

- ⊕ - Found Survey Monument
- ⊙ - Calculated Position
- ⊙ - Surface Hole Location (SHL)
- - Top of Producing Zone (TPZ)
- × - Bottom Hole Location (BHL)