



CRESTONE PEAK  
RESOURCES

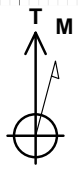
SECTION DETAILS

Sec	MD	Inc	Azi	TVD	+N/-S	+E/-W	Dleg	TFace	VSec	Target
1	0.00	0.00	0.00	0.00	0.00	0.00	0.00	0.00	0.00	
2	200.00	0.00	0.00	200.00	0.00	0.00	0.00	0.00	0.00	
3	666.41	9.33	200.92	664.35	-35.39	-13.52	2.00	200.92	-34.52	
4	6522.80	9.33	200.92	6443.30	-922.10	-352.41	0.00	0.00	-899.51	
5	7757.07	90.00	0.57	7267.00	-213.78	-392.35	8.00	159.41	-190.08	DAVIS 11-9H-G266 TPZ
6	13044.03	90.00	0.57	7267.00	5072.91	-339.44	0.00	0.00	5084.12	DAVIS 11 TGT
7	13230.45	90.00	354.98	7267.00	5259.12	-346.67	3.00	-90.00	5270.43	
8	13997.20	90.00	354.98	7267.00	6022.93	-413.75	0.00	0.00	6036.87	
9	14231.18	90.00	2.00	7267.00	6256.68	-419.91	3.00	90.00	6270.58	
10	14731.18	90.00	2.00	7267.00	6756.37	-402.46	0.00	0.00	6768.35	DAVIS 11-9H-G266 BHL

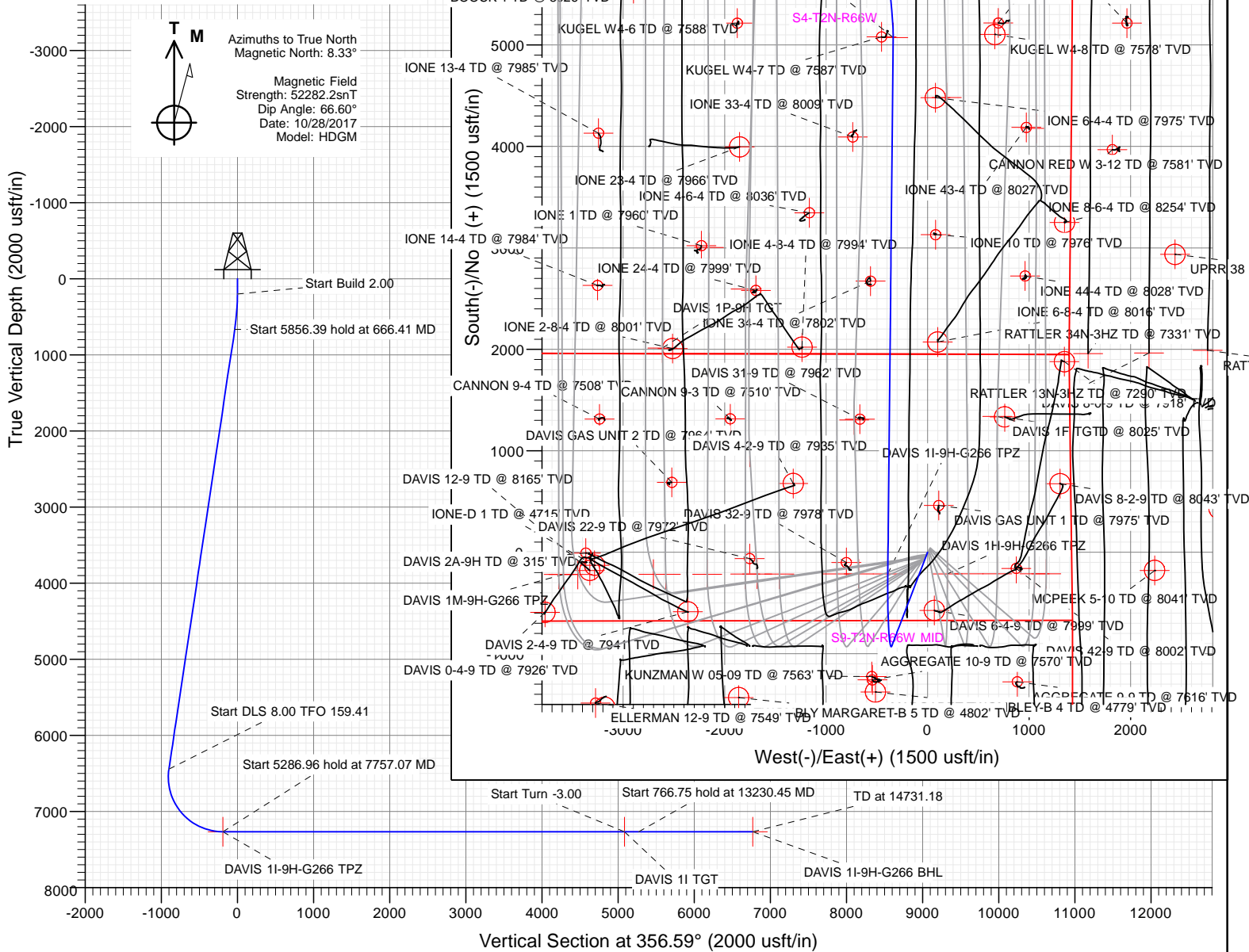
PLAN #3  
DAVIS 11-9H-G266  
23 KB @ 4940.00usft  
Ground Level @ 4917.00  
North American Datum 1983  
Well DAVIS 11-9H-G266 - Slot DAVIS 11-9H, True North

Type	Target	No Target (Freehand)	Azimuth	Origin Type	Slot	N/S	E/W	From TVD
Name	TD							
DAVIS 11 TGT	7267.00		5072.91	-339.44	40.168390	-104.779090		
DAVIS 11-9H-G266 BHL	7267.00		6756.37	-402.46	40.173011	-104.779315		
DAVIS 11-9H-G266 TPZ	7267.00		-213.78	-392.35	40.153877	-104.779279		

Project: DJ BASIN  
Site: S4-T2N-R66W  
Well: DAVIS 11-9H-G266  
Wellbore: OH  
Design: PLAN #3



Azimuths to True North  
Magnetic North: 8.33°  
Magnetic Field  
Strength: 52282.2snT  
Dip Angle: 66.60°  
Date: 10/28/2017  
Model: HDGM



WELL DETAILS: DAVIS 11-9H-G266

+N/-S	+E/-W	Northing	Easting	Latitude	Longitude	
0.00	0.00	1299936.33	3201845.41	40.154464	-104.777875	DAVIS 11-9H

CATHEDRAL



# **Crestone Peak Resources**

**DJ BASIN**

**S4-T2N-R66W**

**DAVIS 1I-9H-G266 - Slot DAVIS 1I-9H**

**OH**

**Plan: PLAN #3**

## **Standard Planning Report**

**11 January, 2018**

# Cathedral Energy Services

## Planning Report

<b>Database:</b>	USA EDM 5000 Multi Users DB	<b>Local Co-ordinate Reference:</b>	Well DAVIS 1I-9H-G266 - Slot DAVIS 1I-9H
<b>Company:</b>	Crestone Peak Resources	<b>TVD Reference:</b>	23' KB @ 4940.00usft
<b>Project:</b>	DJ BASIN	<b>MD Reference:</b>	23' KB @ 4940.00usft
<b>Site:</b>	S4-T2N-R66W	<b>North Reference:</b>	True
<b>Well:</b>	DAVIS 1I-9H-G266	<b>Survey Calculation Method:</b>	Minimum Curvature
<b>Wellbore:</b>	OH		
<b>Design:</b>	PLAN #3		

Project	DJ BASIN		
Map System:	US State Plane 1983	System Datum:	Mean Sea Level
Geo Datum:	North American Datum 1983		
Map Zone:	Colorado Northern Zone		

Site		S4-T2N-R66W			
Site Position:		Northing:	1,300,048.95 usft	Latitude:	40.154783
From:	Map	Easting:	3,201,389.75 usft	Longitude:	-104.779502
Position Uncertainty:	0.00 usft	Slot Radius:	13-3/16 "	Grid Convergence:	0.47 °

Well	DAVIS 1I-9H-G266 - Slot DAVIS 1I-9H					
Well Position	+N/-S	-116.31 usft	Northing:	1,299,936.33 usft	Latitude:	40.154464
	+E/-W	454.73 usft	Easting:	3,201,845.41 usft	Longitude:	-104.777875
Position Uncertainty		0.00 usft	Wellhead Elevation:		Ground Level:	4,917.00 usft

Wellbore	OH				
Magnetics	Model Name	Sample Date	Declination (°)	Dip Angle (°)	Field Strength (nT)
	HDGM	10/28/2017	8.33	66.60	52,282.20000000

Design	PLAN #3			
Audit Notes:				
Version:	Phase:	PLAN	Tie On Depth:	0.00
Vertical Section:	Depth From (TVD) (usft)	+N/-S (usft)	+E/-W (usft)	Direction (°)
	0.00	0.00	0.00	356.59

Plan Sections										
Measured Depth (usft)	Inclination (°)	Azimuth (°)	Vertical Depth (usft)	+N/-S (usft)	+E/-W (usft)	Dogleg Rate (°/100usft)	Build Rate (°/100usft)	Turn Rate (°/100usft)	TFO (°)	Target
0.00	0.00	0.00	0.00	0.00	0.00	0.00	0.00	0.00	0.00	
200.00	0.00	0.00	200.00	0.00	0.00	0.00	0.00	0.00	0.00	
666.41	9.33	200.92	664.35	-35.39	-13.52	2.00	2.00	0.00	200.92	
6,522.80	9.33	200.92	6,443.30	-922.10	-352.41	0.00	0.00	0.00	0.00	
7,757.07	90.00	0.57	7,267.00	-213.78	-392.35	8.00	6.54	12.94	159.41	DAVIS 1I-9H-G266 TF
13,044.03	90.00	0.57	7,267.00	5,072.91	-339.44	0.00	0.00	0.00	0.00	DAVIS 1I TGT
13,230.45	90.00	354.98	7,267.00	5,259.12	-346.67	3.00	0.00	-3.00	-90.00	
13,997.20	90.00	354.98	7,267.00	6,022.93	-413.75	0.00	0.00	0.00	0.00	
14,231.18	90.00	2.00	7,267.00	6,256.68	-419.91	3.00	0.00	3.00	90.00	
14,731.18	90.00	2.00	7,267.00	6,756.37	-402.46	0.00	0.00	0.00	0.00	DAVIS 1I-9H-G266 BI

# Cathedral Energy Services

## Planning Report

<b>Database:</b>	USA EDM 5000 Multi Users DB	<b>Local Co-ordinate Reference:</b>	Well DAVIS 1I-9H-G266 - Slot DAVIS 1I-9H
<b>Company:</b>	Crestone Peak Resources	<b>TVD Reference:</b>	23' KB @ 4940.00usft
<b>Project:</b>	DJ BASIN	<b>MD Reference:</b>	23' KB @ 4940.00usft
<b>Site:</b>	S4-T2N-R66W	<b>North Reference:</b>	True
<b>Well:</b>	DAVIS 1I-9H-G266	<b>Survey Calculation Method:</b>	Minimum Curvature
<b>Wellbore:</b>	OH		
<b>Design:</b>	PLAN #3		

Planned Survey									
Measured Depth (usft)	Inclination (°)	Azimuth (°)	Vertical Depth (usft)	+N/-S (usft)	+E/-W (usft)	Vertical Section (usft)	Dogleg Rate (°/100usft)	Build Rate (°/100usft)	Turn Rate (°/100usft)
0.00	0.00	0.00	0.00	0.00	0.00	0.00	0.00	0.00	0.00
100.00	0.00	0.00	100.00	0.00	0.00	0.00	0.00	0.00	0.00
200.00	0.00	0.00	200.00	0.00	0.00	0.00	0.00	0.00	0.00
300.00	2.00	200.92	299.98	-1.63	-0.62	-1.59	2.00	2.00	0.00
400.00	4.00	200.92	399.84	-6.52	-2.49	-6.36	2.00	2.00	0.00
500.00	6.00	200.92	499.45	-14.66	-5.60	-14.30	2.00	2.00	0.00
600.00	8.00	200.92	598.70	-26.04	-9.95	-25.40	2.00	2.00	0.00
666.41	9.33	200.92	664.35	-35.39	-13.52	-34.52	2.00	2.00	0.00
700.00	9.33	200.92	697.50	-40.47	-15.47	-39.48	0.00	0.00	0.00
800.00	9.33	200.92	796.18	-55.61	-21.25	-54.25	0.00	0.00	0.00
900.00	9.33	200.92	894.85	-70.76	-27.04	-69.02	0.00	0.00	0.00
1,000.00	9.33	200.92	993.53	-85.90	-32.83	-83.79	0.00	0.00	0.00
1,100.00	9.33	200.92	1,092.21	-101.04	-38.61	-98.56	0.00	0.00	0.00
1,200.00	9.33	200.92	1,190.89	-116.18	-44.40	-113.33	0.00	0.00	0.00
1,300.00	9.33	200.92	1,289.56	-131.32	-50.19	-128.10	0.00	0.00	0.00
1,400.00	9.33	200.92	1,388.24	-146.46	-55.97	-142.87	0.00	0.00	0.00
1,500.00	9.33	200.92	1,486.92	-161.60	-61.76	-157.64	0.00	0.00	0.00
1,600.00	9.33	200.92	1,585.60	-176.74	-67.55	-172.41	0.00	0.00	0.00
1,700.00	9.33	200.92	1,684.27	-191.88	-73.33	-187.18	0.00	0.00	0.00
1,800.00	9.33	200.92	1,782.95	-207.02	-79.12	-201.95	0.00	0.00	0.00
1,900.00	9.33	200.92	1,881.63	-222.16	-84.91	-216.72	0.00	0.00	0.00
2,000.00	9.33	200.92	1,980.31	-237.31	-90.69	-231.49	0.00	0.00	0.00
2,100.00	9.33	200.92	2,078.98	-252.45	-96.48	-246.26	0.00	0.00	0.00
2,200.00	9.33	200.92	2,177.66	-267.59	-102.27	-261.03	0.00	0.00	0.00
2,300.00	9.33	200.92	2,276.34	-282.73	-108.05	-275.80	0.00	0.00	0.00
2,400.00	9.33	200.92	2,375.02	-297.87	-113.84	-290.57	0.00	0.00	0.00
2,500.00	9.33	200.92	2,473.69	-313.01	-119.63	-305.34	0.00	0.00	0.00
2,600.00	9.33	200.92	2,572.37	-328.15	-125.41	-320.11	0.00	0.00	0.00
2,700.00	9.33	200.92	2,671.05	-343.29	-131.20	-334.88	0.00	0.00	0.00
2,800.00	9.33	200.92	2,769.73	-358.43	-136.99	-349.65	0.00	0.00	0.00
2,900.00	9.33	200.92	2,868.41	-373.57	-142.77	-364.42	0.00	0.00	0.00
3,000.00	9.33	200.92	2,967.08	-388.71	-148.56	-379.19	0.00	0.00	0.00
3,100.00	9.33	200.92	3,065.76	-403.86	-154.35	-393.96	0.00	0.00	0.00
3,200.00	9.33	200.92	3,164.44	-419.00	-160.13	-408.73	0.00	0.00	0.00
3,300.00	9.33	200.92	3,263.12	-434.14	-165.92	-423.50	0.00	0.00	0.00
3,400.00	9.33	200.92	3,361.79	-449.28	-171.70	-438.27	0.00	0.00	0.00
3,500.00	9.33	200.92	3,460.47	-464.42	-177.49	-453.04	0.00	0.00	0.00
3,600.00	9.33	200.92	3,559.15	-479.56	-183.28	-467.81	0.00	0.00	0.00
3,700.00	9.33	200.92	3,657.83	-494.70	-189.06	-482.58	0.00	0.00	0.00
3,800.00	9.33	200.92	3,756.50	-509.84	-194.85	-497.35	0.00	0.00	0.00
3,900.00	9.33	200.92	3,855.18	-524.98	-200.64	-512.12	0.00	0.00	0.00
4,000.00	9.33	200.92	3,953.86	-540.12	-206.42	-526.89	0.00	0.00	0.00
4,100.00	9.33	200.92	4,052.54	-555.26	-212.21	-541.66	0.00	0.00	0.00
4,200.00	9.33	200.92	4,151.21	-570.41	-218.00	-556.43	0.00	0.00	0.00
4,300.00	9.33	200.92	4,249.89	-585.55	-223.78	-571.20	0.00	0.00	0.00
4,400.00	9.33	200.92	4,348.57	-600.69	-229.57	-585.97	0.00	0.00	0.00
4,500.00	9.33	200.92	4,447.25	-615.83	-235.36	-600.74	0.00	0.00	0.00
4,600.00	9.33	200.92	4,545.92	-630.97	-241.14	-615.51	0.00	0.00	0.00
4,700.00	9.33	200.92	4,644.60	-646.11	-246.93	-630.28	0.00	0.00	0.00
4,800.00	9.33	200.92	4,743.28	-661.25	-252.72	-645.05	0.00	0.00	0.00
4,900.00	9.33	200.92	4,841.96	-676.39	-258.50	-659.82	0.00	0.00	0.00
5,000.00	9.33	200.92	4,940.64	-691.53	-264.29	-674.59	0.00	0.00	0.00
5,100.00	9.33	200.92	5,039.31	-706.67	-270.08	-689.36	0.00	0.00	0.00
5,200.00	9.33	200.92	5,137.99	-721.81	-275.86	-704.13	0.00	0.00	0.00

# Cathedral Energy Services

## Planning Report

<b>Database:</b>	USA EDM 5000 Multi Users DB	<b>Local Co-ordinate Reference:</b>	Well DAVIS 1I-9H-G266 - Slot DAVIS 1I-9H
<b>Company:</b>	Crestone Peak Resources	<b>TVD Reference:</b>	23' KB @ 4940.00usft
<b>Project:</b>	DJ BASIN	<b>MD Reference:</b>	23' KB @ 4940.00usft
<b>Site:</b>	S4-T2N-R66W	<b>North Reference:</b>	True
<b>Well:</b>	DAVIS 1I-9H-G266	<b>Survey Calculation Method:</b>	Minimum Curvature
<b>Wellbore:</b>	OH		
<b>Design:</b>	PLAN #3		

Planned Survey									
Measured Depth (usft)	Inclination (°)	Azimuth (°)	Vertical Depth (usft)	+N/-S (usft)	+E/-W (usft)	Vertical Section (usft)	Dogleg Rate (°/100usft)	Build Rate (°/100usft)	Turn Rate (°/100usft)
5,300.00	9.33	200.92	5,236.67	-736.95	-281.65	-718.90	0.00	0.00	0.00
5,400.00	9.33	200.92	5,335.35	-752.10	-287.44	-733.67	0.00	0.00	0.00
5,500.00	9.33	200.92	5,434.02	-767.24	-293.22	-748.44	0.00	0.00	0.00
5,600.00	9.33	200.92	5,532.70	-782.38	-299.01	-763.21	0.00	0.00	0.00
5,700.00	9.33	200.92	5,631.38	-797.52	-304.80	-777.98	0.00	0.00	0.00
5,800.00	9.33	200.92	5,730.06	-812.66	-310.58	-792.75	0.00	0.00	0.00
5,900.00	9.33	200.92	5,828.73	-827.80	-316.37	-807.52	0.00	0.00	0.00
6,000.00	9.33	200.92	5,927.41	-842.94	-322.15	-822.29	0.00	0.00	0.00
6,100.00	9.33	200.92	6,026.09	-858.08	-327.94	-837.06	0.00	0.00	0.00
6,200.00	9.33	200.92	6,124.77	-873.22	-333.73	-851.83	0.00	0.00	0.00
6,300.00	9.33	200.92	6,223.44	-888.36	-339.51	-866.60	0.00	0.00	0.00
6,400.00	9.33	200.92	6,322.12	-903.50	-345.30	-881.37	0.00	0.00	0.00
6,500.00	9.33	200.92	6,420.80	-918.65	-351.09	-896.14	0.00	0.00	0.00
6,522.80	9.33	200.92	6,443.30	-922.10	-352.41	-899.51	0.00	0.00	0.00
6,600.00	4.15	232.41	6,519.96	-929.66	-356.86	-906.79	8.00	-6.70	40.79
6,700.00	6.34	329.64	6,619.68	-927.10	-362.53	-903.90	8.00	2.18	97.23
6,800.00	13.82	347.15	6,718.09	-910.66	-367.98	-887.17	8.00	7.48	17.51
6,900.00	21.67	352.31	6,813.27	-880.67	-373.12	-856.93	8.00	7.85	5.16
7,000.00	29.60	354.80	6,903.35	-837.71	-377.83	-813.76	8.00	7.93	2.49
7,100.00	37.56	356.31	6,986.60	-782.61	-382.04	-758.51	8.00	7.96	1.51
7,200.00	45.53	357.36	7,061.39	-716.45	-385.64	-692.25	8.00	7.97	1.05
7,300.00	53.50	358.15	7,126.26	-640.51	-388.59	-616.27	8.00	7.98	0.79
7,400.00	61.49	358.80	7,179.96	-556.28	-390.81	-532.06	8.00	7.98	0.64
7,500.00	69.47	359.35	7,221.43	-465.38	-392.27	-441.24	8.00	7.98	0.55
7,600.00	77.46	359.85	7,249.87	-369.60	-392.94	-345.58	8.00	7.99	0.50
7,700.00	85.44	0.31	7,264.73	-270.79	-392.80	-246.96	8.00	7.99	0.47
7,757.07	90.00	0.57	7,267.00	-213.78	-392.35	-190.08	8.00	7.99	0.46
DAVIS 1I-9H-G266 TPZ									
7,800.00	90.00	0.57	7,267.00	-170.86	-391.93	-147.25	0.00	0.00	0.00
7,900.00	90.00	0.57	7,267.00	-70.86	-390.92	-47.49	0.00	0.00	0.00
8,000.00	90.00	0.57	7,267.00	29.13	-389.92	52.27	0.00	0.00	0.00
8,100.00	90.00	0.57	7,267.00	129.13	-388.92	152.03	0.00	0.00	0.00
8,200.00	90.00	0.57	7,267.00	229.12	-387.92	251.78	0.00	0.00	0.00
8,300.00	90.00	0.57	7,267.00	329.12	-386.92	351.54	0.00	0.00	0.00
8,400.00	90.00	0.57	7,267.00	429.11	-385.92	451.30	0.00	0.00	0.00
8,500.00	90.00	0.57	7,267.00	529.11	-384.92	551.06	0.00	0.00	0.00
8,600.00	90.00	0.57	7,267.00	629.10	-383.92	650.82	0.00	0.00	0.00
8,700.00	90.00	0.57	7,267.00	729.10	-382.92	750.58	0.00	0.00	0.00
8,800.00	90.00	0.57	7,267.00	829.09	-381.92	850.33	0.00	0.00	0.00
8,900.00	90.00	0.57	7,267.00	929.09	-380.92	950.09	0.00	0.00	0.00
9,000.00	90.00	0.57	7,267.00	1,029.08	-379.92	1,049.85	0.00	0.00	0.00
9,100.00	90.00	0.57	7,267.00	1,129.08	-378.91	1,149.61	0.00	0.00	0.00
9,200.00	90.00	0.57	7,267.00	1,229.07	-377.91	1,249.37	0.00	0.00	0.00
9,300.00	90.00	0.57	7,267.00	1,329.07	-376.91	1,349.13	0.00	0.00	0.00
9,400.00	90.00	0.57	7,267.00	1,429.06	-375.91	1,448.89	0.00	0.00	0.00
9,500.00	90.00	0.57	7,267.00	1,529.06	-374.91	1,548.64	0.00	0.00	0.00
9,600.00	90.00	0.57	7,267.00	1,629.05	-373.91	1,648.40	0.00	0.00	0.00
9,700.00	90.00	0.57	7,267.00	1,729.05	-372.91	1,748.16	0.00	0.00	0.00
9,800.00	90.00	0.57	7,267.00	1,829.04	-371.91	1,847.92	0.00	0.00	0.00
9,900.00	90.00	0.57	7,267.00	1,929.04	-370.91	1,947.68	0.00	0.00	0.00
10,000.00	90.00	0.57	7,267.00	2,029.03	-369.91	2,047.44	0.00	0.00	0.00
10,100.00	90.00	0.57	7,267.00	2,129.03	-368.91	2,147.20	0.00	0.00	0.00
10,200.00	90.00	0.57	7,267.00	2,229.02	-367.90	2,246.95	0.00	0.00	0.00

# Cathedral Energy Services

## Planning Report

<b>Database:</b>	USA EDM 5000 Multi Users DB	<b>Local Co-ordinate Reference:</b>	Well DAVIS 1I-9H-G266 - Slot DAVIS 1I-9H
<b>Company:</b>	Crestone Peak Resources	<b>TVD Reference:</b>	23' KB @ 4940.00usft
<b>Project:</b>	DJ BASIN	<b>MD Reference:</b>	23' KB @ 4940.00usft
<b>Site:</b>	S4-T2N-R66W	<b>North Reference:</b>	True
<b>Well:</b>	DAVIS 1I-9H-G266	<b>Survey Calculation Method:</b>	Minimum Curvature
<b>Wellbore:</b>	OH		
<b>Design:</b>	PLAN #3		

Planned Survey									
Measured Depth (usft)	Inclination (°)	Azimuth (°)	Vertical Depth (usft)	+N/-S (usft)	+E/-W (usft)	Vertical Section (usft)	Dogleg Rate (°/100usft)	Build Rate (°/100usft)	Turn Rate (°/100usft)
10,300.00	90.00	0.57	7,267.00	2,329.02	-366.90	2,346.71	0.00	0.00	0.00
10,400.00	90.00	0.57	7,267.00	2,429.01	-365.90	2,446.47	0.00	0.00	0.00
10,500.00	90.00	0.57	7,267.00	2,529.01	-364.90	2,546.23	0.00	0.00	0.00
10,600.00	90.00	0.57	7,267.00	2,629.00	-363.90	2,645.99	0.00	0.00	0.00
10,700.00	90.00	0.57	7,267.00	2,729.00	-362.90	2,745.75	0.00	0.00	0.00
10,800.00	90.00	0.57	7,267.00	2,828.99	-361.90	2,845.51	0.00	0.00	0.00
10,900.00	90.00	0.57	7,267.00	2,928.99	-360.90	2,945.26	0.00	0.00	0.00
11,000.00	90.00	0.57	7,267.00	3,028.98	-359.90	3,045.02	0.00	0.00	0.00
11,100.00	90.00	0.57	7,267.00	3,128.98	-358.90	3,144.78	0.00	0.00	0.00
11,200.00	90.00	0.57	7,267.00	3,228.97	-357.90	3,244.54	0.00	0.00	0.00
11,300.00	90.00	0.57	7,267.00	3,328.97	-356.90	3,344.30	0.00	0.00	0.00
11,400.00	90.00	0.57	7,267.00	3,428.96	-355.89	3,444.06	0.00	0.00	0.00
11,500.00	90.00	0.57	7,267.00	3,528.96	-354.89	3,543.82	0.00	0.00	0.00
11,600.00	90.00	0.57	7,267.00	3,628.95	-353.89	3,643.57	0.00	0.00	0.00
11,700.00	90.00	0.57	7,267.00	3,728.95	-352.89	3,743.33	0.00	0.00	0.00
11,800.00	90.00	0.57	7,267.00	3,828.94	-351.89	3,843.09	0.00	0.00	0.00
11,900.00	90.00	0.57	7,267.00	3,928.94	-350.89	3,942.85	0.00	0.00	0.00
12,000.00	90.00	0.57	7,267.00	4,028.93	-349.89	4,042.61	0.00	0.00	0.00
12,100.00	90.00	0.57	7,267.00	4,128.93	-348.89	4,142.37	0.00	0.00	0.00
12,200.00	90.00	0.57	7,267.00	4,228.92	-347.89	4,242.13	0.00	0.00	0.00
12,300.00	90.00	0.57	7,267.00	4,328.92	-346.89	4,341.88	0.00	0.00	0.00
12,400.00	90.00	0.57	7,267.00	4,428.91	-345.89	4,441.64	0.00	0.00	0.00
12,500.00	90.00	0.57	7,267.00	4,528.91	-344.89	4,541.40	0.00	0.00	0.00
12,600.00	90.00	0.57	7,267.00	4,628.90	-343.88	4,641.16	0.00	0.00	0.00
12,700.00	90.00	0.57	7,267.00	4,728.90	-342.88	4,740.92	0.00	0.00	0.00
12,800.00	90.00	0.57	7,267.00	4,828.89	-341.88	4,840.68	0.00	0.00	0.00
12,900.00	90.00	0.57	7,267.00	4,928.89	-340.88	4,940.44	0.00	0.00	0.00
13,000.00	90.00	0.57	7,267.00	5,028.88	-339.88	5,040.19	0.00	0.00	0.00
13,044.03	90.00	0.57	7,267.00	5,072.91	-339.44	5,084.12	0.00	0.00	0.00
DAVIS 1I TGT									
13,100.00	90.00	358.89	7,267.00	5,128.88	-339.70	5,140.00	3.00	0.00	-3.00
13,200.00	90.00	355.89	7,267.00	5,228.76	-344.25	5,239.98	3.00	0.00	-3.00
13,230.45	90.00	354.98	7,267.00	5,259.12	-346.67	5,270.43	3.00	0.00	-3.00
13,300.00	90.00	354.98	7,267.00	5,328.40	-352.75	5,339.95	0.00	0.00	0.00
13,400.00	90.00	354.98	7,267.00	5,428.02	-361.50	5,439.91	0.00	0.00	0.00
13,500.00	90.00	354.98	7,267.00	5,527.63	-370.25	5,539.87	0.00	0.00	0.00
13,600.00	90.00	354.98	7,267.00	5,627.25	-379.00	5,639.83	0.00	0.00	0.00
13,700.00	90.00	354.98	7,267.00	5,726.86	-387.75	5,739.79	0.00	0.00	0.00
13,800.00	90.00	354.98	7,267.00	5,826.48	-396.50	5,839.75	0.00	0.00	0.00
13,900.00	90.00	354.98	7,267.00	5,926.10	-405.25	5,939.71	0.00	0.00	0.00
13,997.20	90.00	354.98	7,267.00	6,022.93	-413.75	6,036.87	0.00	0.00	0.00
14,000.00	90.00	355.06	7,267.00	6,025.71	-413.99	6,039.67	3.00	0.00	3.00
14,100.00	90.00	358.06	7,267.00	6,125.52	-419.99	6,139.66	3.00	0.00	3.00
14,200.00	90.00	1.06	7,267.00	6,225.51	-420.75	6,239.51	3.00	0.00	3.00
14,231.18	90.00	2.00	7,267.00	6,256.68	-419.91	6,270.58	3.00	0.00	3.00
14,300.00	90.00	2.00	7,267.00	6,325.46	-417.51	6,339.09	0.00	0.00	0.00
14,400.00	90.00	2.00	7,267.00	6,425.39	-414.02	6,438.64	0.00	0.00	0.00
14,500.00	90.00	2.00	7,267.00	6,525.33	-410.53	6,538.20	0.00	0.00	0.00
14,600.00	90.00	2.00	7,267.00	6,625.27	-407.04	6,637.75	0.00	0.00	0.00
14,700.00	90.00	2.00	7,267.00	6,725.21	-403.55	6,737.31	0.00	0.00	0.00
14,731.18	90.00	2.00	7,267.00	6,756.37	-402.46	6,768.35	0.00	0.00	0.00
DAVIS 1I-9H-G266 BHL									

# Cathedral Energy Services

## Planning Report

<b>Database:</b>	USA EDM 5000 Multi Users DB	<b>Local Co-ordinate Reference:</b>	Well DAVIS 1I-9H-G266 - Slot DAVIS 1I-9H
<b>Company:</b>	Crestone Peak Resources	<b>TVD Reference:</b>	23' KB @ 4940.00usft
<b>Project:</b>	DJ BASIN	<b>MD Reference:</b>	23' KB @ 4940.00usft
<b>Site:</b>	S4-T2N-R66W	<b>North Reference:</b>	True
<b>Well:</b>	DAVIS 1I-9H-G266	<b>Survey Calculation Method:</b>	Minimum Curvature
<b>Wellbore:</b>	OH		
<b>Design:</b>	PLAN #3		

Design Targets									
Target Name									
- hit/miss target	Dip Angle	Dip Dir.	TVD	+N/-S	+E/-W	Northing	Easting	Latitude	Longitude
- Shape	(°)	(°)	(usft)	(usft)	(usft)	(usft)	(usft)		
DAVIS 1I-9H-G266 TPZ	0.00	0.00	7,267.00	-213.78	-392.35	1,299,719.36	3,201,454.81	40.153877	-104.779279
- plan hits target center									
- Point									
DAVIS 1I-9H-G266 BHL	0.00	0.00	7,267.00	6,756.37	-402.46	1,306,689.20	3,201,387.94	40.173011	-104.779316
- plan hits target center									
- Point									
DAVIS 1I TGT	0.00	0.00	7,267.00	5,072.91	-339.44	1,305,006.31	3,201,464.67	40.168390	-104.779090
- plan hits target center									
- Point									