



CRESTONE PEAK
RESOURCES

SECTION DETAILS

Sec	MD	Inc	Azi	TVD	+N/-S	+E/-W	Dleg	TFace	V Sect	Target
1	0.00	0.00	0.00	0.00	0.00	0.00	0.00	0.00	0.00	
2	500.00	0.00	0.00	500.00	0.00	0.00	0.00	0.00	0.00	
3	986.13	9.72	159.35	983.80	-38.50	14.51	2.00	159.35	-37.77	
4	6676.66	9.72	159.35	6592.60	-937.76	353.44	0.00	0.00	-919.97	
5	7915.77	90.00	359.39	7421.00	-230.15	394.49	8.00	-159.69	-211.22	DAVIS 1G-9H-G266 TPZ
6	14892.05	90.00	359.39	7421.00	6745.72	319.68	0.00	0.00	6753.30	DAVIS 1G-9H-G266 BHL

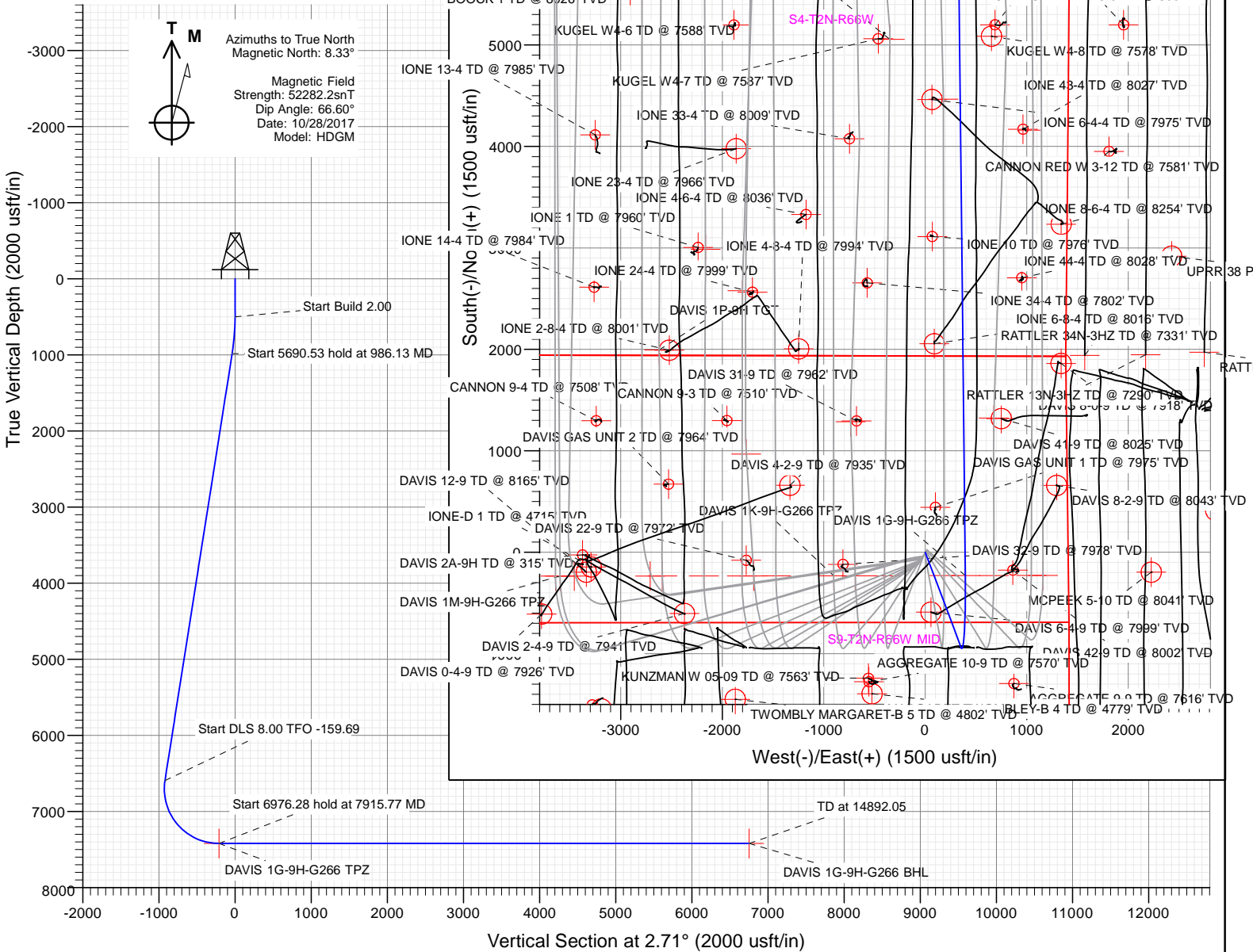
PLAN #3
DAVIS 1G-9H-G266
23 KIS @ 4940.00ust
Ground Level @ 4917.00
North American Datum 1983
Well DAVIS 1G-9H-G266 - Slot DAVIS 1G-9H, True North

Type TD	Target No Target (Freehand)	TVD	+N/-S	+E/-W	Latitude	Longitude
DAVIS 1G-9H-G266 BHL		7421.00	6745.72	319.68	40.173029	-104.776696
DAVIS 1G-9H-G266 TPZ		7421.00	-230.15	394.49	40.153880	-104.776428

Project: DJ BASIN
Site: S4-T2N-R66W
Well: DAVIS 1G-9H-G266
Wellbore: OH
Design: PLAN #3



Azimuths to True North
Magnetic North: 8.33°
Magnetic Field
Strength: 52282.2snT
Dip Angle: 66.60°
Date: 10/28/2017
Model: HDGM



WELL DETAILS: DAVIS 1G-9H-G266

+N/-S	+E/-W	Northing	Easting	Latitude	Longitude	DAVIS 1G-9H
0.00	0.00	1299953.77	3201855.19	40.154511	-104.777840	DAVIS 1G-9H

CATHEDRAL



Crestone Peak Resources

DJ BASIN

S4-T2N-R66W

DAVIS 1G-9H-G266 - Slot DAVIS 1G-9H

OH

Plan: PLAN #3

Standard Planning Report

11 January, 2018

Cathedral Energy Services

Planning Report

Database:	USA EDM 5000 Multi Users DB	Local Co-ordinate Reference:	Well DAVIS 1G-9H-G266 - Slot DAVIS 1G-9H
Company:	Crestone Peak Resources	TVD Reference:	23' KB @ 4940.00usft
Project:	DJ BASIN	MD Reference:	23' KB @ 4940.00usft
Site:	S4-T2N-R66W	North Reference:	True
Well:	DAVIS 1G-9H-G266	Survey Calculation Method:	Minimum Curvature
Wellbore:	OH		
Design:	PLAN #3		

Project	DJ BASIN		
Map System:	US State Plane 1983	System Datum:	Mean Sea Level
Geo Datum:	North American Datum 1983		
Map Zone:	Colorado Northern Zone		

Site	S4-T2N-R66W				
Site Position:	Northing:	1,300,048.95 usft	Latitude:	40.154783	
From: Map	Easting:	3,201,389.75 usft	Longitude:	-104.779502	
Position Uncertainty:	0.00 usft	Slot Radius:	13-3/16 "	Grid Convergence:	0.47 °

Well	DAVIS 1G-9H-G266 - Slot DAVIS 1G-9H					
Well Position	+N/-S	-98.95 usft	Northing:	1,299,953.77 usft	Latitude:	40.154512
	+E/-W	464.65 usft	Easting:	3,201,855.19 usft	Longitude:	-104.777840
Position Uncertainty		0.00 usft	Wellhead Elevation:		Ground Level:	4,917.00 usft

Wellbore	OH				
Magnetics	Model Name	Sample Date	Declination (°)	Dip Angle (°)	Field Strength (nT)
	HDGM	10/28/2017	8.33	66.60	52,282.20000000

Design	PLAN #3			
Audit Notes:				
Version:	Phase:	PLAN	Tie On Depth:	0.00
Vertical Section:	Depth From (TVD) (usft)	+N/-S (usft)	+E/-W (usft)	Direction (°)
	0.00	0.00	0.00	2.71

Plan Sections										
Measured Depth (usft)	Inclination (°)	Azimuth (°)	Vertical Depth (usft)	+N/-S (usft)	+E/-W (usft)	Dogleg Rate (°/100usft)	Build Rate (°/100usft)	Turn Rate (°/100usft)	TFO (°)	Target
0.00	0.00	0.00	0.00	0.00	0.00	0.00	0.00	0.00	0.00	
500.00	0.00	0.00	500.00	0.00	0.00	0.00	0.00	0.00	0.00	
986.13	9.72	159.35	983.80	-38.50	14.51	2.00	2.00	0.00	159.35	
6,676.66	9.72	159.35	6,592.60	-937.76	353.44	0.00	0.00	0.00	0.00	
7,915.77	90.00	359.39	7,421.00	-230.15	394.49	8.00	6.48	-12.91	-159.69	DAVIS 1G-9H-G266 T
14,892.05	90.00	359.39	7,421.00	6,745.72	319.68	0.00	0.00	0.00	0.00	DAVIS 1G-9H-G266 E

Cathedral Energy Services

Planning Report

Database:	USA EDM 5000 Multi Users DB	Local Co-ordinate Reference:	Well DAVIS 1G-9H-G266 - Slot DAVIS 1G-9H
Company:	Crestone Peak Resources	TVD Reference:	23' KB @ 4940.00usft
Project:	DJ BASIN	MD Reference:	23' KB @ 4940.00usft
Site:	S4-T2N-R66W	North Reference:	True
Well:	DAVIS 1G-9H-G266	Survey Calculation Method:	Minimum Curvature
Wellbore:	OH		
Design:	PLAN #3		

Planned Survey									
Measured Depth (usft)	Inclination (°)	Azimuth (°)	Vertical Depth (usft)	+N/-S (usft)	+E/-W (usft)	Vertical Section (usft)	Dogleg Rate (°/100usft)	Build Rate (°/100usft)	Turn Rate (°/100usft)
0.00	0.00	0.00	0.00	0.00	0.00	0.00	0.00	0.00	0.00
100.00	0.00	0.00	100.00	0.00	0.00	0.00	0.00	0.00	0.00
200.00	0.00	0.00	200.00	0.00	0.00	0.00	0.00	0.00	0.00
300.00	0.00	0.00	300.00	0.00	0.00	0.00	0.00	0.00	0.00
400.00	0.00	0.00	400.00	0.00	0.00	0.00	0.00	0.00	0.00
500.00	0.00	0.00	500.00	0.00	0.00	0.00	0.00	0.00	0.00
600.00	2.00	159.35	599.98	-1.63	0.62	-1.60	2.00	2.00	0.00
700.00	4.00	159.35	699.84	-6.53	2.46	-6.41	2.00	2.00	0.00
800.00	6.00	159.35	799.45	-14.69	5.53	-14.41	2.00	2.00	0.00
900.00	8.00	159.35	898.70	-26.09	9.83	-25.59	2.00	2.00	0.00
986.13	9.72	159.35	983.80	-38.50	14.51	-37.77	2.00	2.00	0.00
1,000.00	9.72	159.35	997.47	-40.69	15.34	-39.92	0.00	0.00	0.00
1,100.00	9.72	159.35	1,096.03	-56.50	21.29	-55.43	0.00	0.00	0.00
1,200.00	9.72	159.35	1,194.60	-72.30	27.25	-70.93	0.00	0.00	0.00
1,300.00	9.72	159.35	1,293.16	-88.10	33.21	-86.43	0.00	0.00	0.00
1,400.00	9.72	159.35	1,391.73	-103.91	39.16	-101.94	0.00	0.00	0.00
1,500.00	9.72	159.35	1,490.29	-119.71	45.12	-117.44	0.00	0.00	0.00
1,600.00	9.72	159.35	1,588.85	-135.51	51.07	-132.94	0.00	0.00	0.00
1,700.00	9.72	159.35	1,687.42	-151.31	57.03	-148.44	0.00	0.00	0.00
1,800.00	9.72	159.35	1,785.98	-167.12	62.99	-163.95	0.00	0.00	0.00
1,900.00	9.72	159.35	1,884.54	-182.92	68.94	-179.45	0.00	0.00	0.00
2,000.00	9.72	159.35	1,983.11	-198.72	74.90	-194.95	0.00	0.00	0.00
2,100.00	9.72	159.35	2,081.67	-214.52	80.85	-210.46	0.00	0.00	0.00
2,200.00	9.72	159.35	2,180.24	-230.33	86.81	-225.96	0.00	0.00	0.00
2,300.00	9.72	159.35	2,278.80	-246.13	92.77	-241.46	0.00	0.00	0.00
2,400.00	9.72	159.35	2,377.36	-261.93	98.72	-256.96	0.00	0.00	0.00
2,500.00	9.72	159.35	2,475.93	-277.73	104.68	-272.47	0.00	0.00	0.00
2,600.00	9.72	159.35	2,574.49	-293.54	110.63	-287.97	0.00	0.00	0.00
2,700.00	9.72	159.35	2,673.05	-309.34	116.59	-303.47	0.00	0.00	0.00
2,800.00	9.72	159.35	2,771.62	-325.14	122.55	-318.98	0.00	0.00	0.00
2,900.00	9.72	159.35	2,870.18	-340.94	128.50	-334.48	0.00	0.00	0.00
3,000.00	9.72	159.35	2,968.75	-356.75	134.46	-349.98	0.00	0.00	0.00
3,100.00	9.72	159.35	3,067.31	-372.55	140.41	-365.49	0.00	0.00	0.00
3,200.00	9.72	159.35	3,165.87	-388.35	146.37	-380.99	0.00	0.00	0.00
3,300.00	9.72	159.35	3,264.44	-404.16	152.33	-396.49	0.00	0.00	0.00
3,400.00	9.72	159.35	3,363.00	-419.96	158.28	-411.99	0.00	0.00	0.00
3,500.00	9.72	159.35	3,461.56	-435.76	164.24	-427.50	0.00	0.00	0.00
3,600.00	9.72	159.35	3,560.13	-451.56	170.19	-443.00	0.00	0.00	0.00
3,700.00	9.72	159.35	3,658.69	-467.37	176.15	-458.50	0.00	0.00	0.00
3,800.00	9.72	159.35	3,757.25	-483.17	182.11	-474.01	0.00	0.00	0.00
3,900.00	9.72	159.35	3,855.82	-498.97	188.06	-489.51	0.00	0.00	0.00
4,000.00	9.72	159.35	3,954.38	-514.77	194.02	-505.01	0.00	0.00	0.00
4,100.00	9.72	159.35	4,052.95	-530.58	199.98	-520.52	0.00	0.00	0.00
4,200.00	9.72	159.35	4,151.51	-546.38	205.93	-536.02	0.00	0.00	0.00
4,300.00	9.72	159.35	4,250.07	-562.18	211.89	-551.52	0.00	0.00	0.00
4,400.00	9.72	159.35	4,348.64	-577.98	217.84	-567.02	0.00	0.00	0.00
4,500.00	9.72	159.35	4,447.20	-593.79	223.80	-582.53	0.00	0.00	0.00
4,600.00	9.72	159.35	4,545.76	-609.59	229.76	-598.03	0.00	0.00	0.00
4,700.00	9.72	159.35	4,644.33	-625.39	235.71	-613.53	0.00	0.00	0.00
4,800.00	9.72	159.35	4,742.89	-641.19	241.67	-629.04	0.00	0.00	0.00
4,900.00	9.72	159.35	4,841.46	-657.00	247.62	-644.54	0.00	0.00	0.00
5,000.00	9.72	159.35	4,940.02	-672.80	253.58	-660.04	0.00	0.00	0.00
5,100.00	9.72	159.35	5,038.58	-688.60	259.54	-675.55	0.00	0.00	0.00
5,200.00	9.72	159.35	5,137.15	-704.41	265.49	-691.05	0.00	0.00	0.00

Cathedral Energy Services

Planning Report

Database:	USA EDM 5000 Multi Users DB	Local Co-ordinate Reference:	Well DAVIS 1G-9H-G266 - Slot DAVIS 1G-9H
Company:	Crestone Peak Resources	TVD Reference:	23' KB @ 4940.00usft
Project:	DJ BASIN	MD Reference:	23' KB @ 4940.00usft
Site:	S4-T2N-R66W	North Reference:	True
Well:	DAVIS 1G-9H-G266	Survey Calculation Method:	Minimum Curvature
Wellbore:	OH		
Design:	PLAN #3		

Planned Survey									
Measured Depth (usft)	Inclination (°)	Azimuth (°)	Vertical Depth (usft)	+N/-S (usft)	+E/-W (usft)	Vertical Section (usft)	Dogleg Rate (°/100usft)	Build Rate (°/100usft)	Turn Rate (°/100usft)
5,300.00	9.72	159.35	5,235.71	-720.21	271.45	-706.55	0.00	0.00	0.00
5,400.00	9.72	159.35	5,334.27	-736.01	277.40	-722.05	0.00	0.00	0.00
5,500.00	9.72	159.35	5,432.84	-751.81	283.36	-737.56	0.00	0.00	0.00
5,600.00	9.72	159.35	5,531.40	-767.62	289.32	-753.06	0.00	0.00	0.00
5,700.00	9.72	159.35	5,629.97	-783.42	295.27	-768.56	0.00	0.00	0.00
5,800.00	9.72	159.35	5,728.53	-799.22	301.23	-784.07	0.00	0.00	0.00
5,900.00	9.72	159.35	5,827.09	-815.02	307.18	-799.57	0.00	0.00	0.00
6,000.00	9.72	159.35	5,925.66	-830.83	313.14	-815.07	0.00	0.00	0.00
6,100.00	9.72	159.35	6,024.22	-846.63	319.10	-830.57	0.00	0.00	0.00
6,200.00	9.72	159.35	6,122.78	-862.43	325.05	-846.08	0.00	0.00	0.00
6,300.00	9.72	159.35	6,221.35	-878.23	331.01	-861.58	0.00	0.00	0.00
6,400.00	9.72	159.35	6,319.91	-894.04	336.96	-877.08	0.00	0.00	0.00
6,500.00	9.72	159.35	6,418.47	-909.84	342.92	-892.59	0.00	0.00	0.00
6,600.00	9.72	159.35	6,517.04	-925.64	348.88	-908.09	0.00	0.00	0.00
6,676.66	9.72	159.35	6,592.60	-937.76	353.44	-919.97	0.00	0.00	0.00
6,700.00	8.00	154.69	6,615.66	-941.07	354.83	-923.22	8.00	-7.39	-19.97
6,800.00	3.44	76.99	6,715.24	-946.69	360.74	-928.55	8.00	-4.56	-77.70
6,900.00	9.36	20.26	6,814.65	-938.38	366.49	-919.98	8.00	5.92	-56.73
7,000.00	17.06	10.41	6,911.94	-916.28	371.96	-897.65	8.00	7.71	-9.84
7,100.00	24.95	6.63	7,005.23	-880.85	377.06	-862.01	8.00	7.89	-3.78
7,200.00	32.89	4.59	7,092.69	-832.75	381.68	-813.75	8.00	7.94	-2.04
7,300.00	40.85	3.28	7,172.62	-772.94	385.73	-753.81	8.00	7.96	-1.32
7,400.00	48.82	2.33	7,243.48	-702.57	389.13	-683.36	8.00	7.97	-0.95
7,500.00	56.80	1.59	7,303.87	-623.01	391.82	-603.77	8.00	7.98	-0.74
7,600.00	64.78	0.97	7,352.63	-535.82	393.75	-516.58	8.00	7.98	-0.62
7,700.00	72.77	0.43	7,388.80	-442.68	394.88	-423.49	8.00	7.98	-0.54
7,800.00	80.75	359.93	7,411.68	-345.42	395.18	-326.33	8.00	7.99	-0.50
7,900.00	88.74	359.46	7,420.83	-245.92	394.65	-226.97	8.00	7.99	-0.47
7,915.77	90.00	359.39	7,421.00	-230.15	394.49	-211.22	8.00	7.99	-0.47
DAVIS 1G-9H-G266 TPZ									
8,000.00	90.00	359.39	7,421.00	-145.93	393.59	-127.13	0.00	0.00	0.00
8,100.00	90.00	359.39	7,421.00	-45.94	392.51	-27.30	0.00	0.00	0.00
8,200.00	90.00	359.39	7,421.00	54.06	391.44	72.53	0.00	0.00	0.00
8,300.00	90.00	359.39	7,421.00	154.05	390.37	172.36	0.00	0.00	0.00
8,400.00	90.00	359.39	7,421.00	254.05	389.30	272.19	0.00	0.00	0.00
8,500.00	90.00	359.39	7,421.00	354.04	388.22	372.02	0.00	0.00	0.00
8,600.00	90.00	359.39	7,421.00	454.04	387.15	471.85	0.00	0.00	0.00
8,700.00	90.00	359.39	7,421.00	554.03	386.08	571.69	0.00	0.00	0.00
8,800.00	90.00	359.39	7,421.00	654.02	385.01	671.52	0.00	0.00	0.00
8,900.00	90.00	359.39	7,421.00	754.02	383.94	771.35	0.00	0.00	0.00
9,000.00	90.00	359.39	7,421.00	854.01	382.86	871.18	0.00	0.00	0.00
9,100.00	90.00	359.39	7,421.00	954.01	381.79	971.01	0.00	0.00	0.00
9,200.00	90.00	359.39	7,421.00	1,054.00	380.72	1,070.84	0.00	0.00	0.00
9,300.00	90.00	359.39	7,421.00	1,154.00	379.65	1,170.67	0.00	0.00	0.00
9,400.00	90.00	359.39	7,421.00	1,253.99	378.57	1,270.51	0.00	0.00	0.00
9,500.00	90.00	359.39	7,421.00	1,353.98	377.50	1,370.34	0.00	0.00	0.00
9,600.00	90.00	359.39	7,421.00	1,453.98	376.43	1,470.17	0.00	0.00	0.00
9,700.00	90.00	359.39	7,421.00	1,553.97	375.36	1,570.00	0.00	0.00	0.00
9,800.00	90.00	359.39	7,421.00	1,653.97	374.28	1,669.83	0.00	0.00	0.00
9,900.00	90.00	359.39	7,421.00	1,753.96	373.21	1,769.66	0.00	0.00	0.00
10,000.00	90.00	359.39	7,421.00	1,853.96	372.14	1,869.49	0.00	0.00	0.00
10,100.00	90.00	359.39	7,421.00	1,953.95	371.07	1,969.33	0.00	0.00	0.00
10,200.00	90.00	359.39	7,421.00	2,053.94	370.00	2,069.16	0.00	0.00	0.00

Cathedral Energy Services

Planning Report

Database:	USA EDM 5000 Multi Users DB	Local Co-ordinate Reference:	Well DAVIS 1G-9H-G266 - Slot DAVIS 1G-9H
Company:	Crestone Peak Resources	TVD Reference:	23' KB @ 4940.00usft
Project:	DJ BASIN	MD Reference:	23' KB @ 4940.00usft
Site:	S4-T2N-R66W	North Reference:	True
Well:	DAVIS 1G-9H-G266	Survey Calculation Method:	Minimum Curvature
Wellbore:	OH		
Design:	PLAN #3		

Planned Survey									
Measured Depth (usft)	Inclination (°)	Azimuth (°)	Vertical Depth (usft)	+N/-S (usft)	+E/-W (usft)	Vertical Section (usft)	Dogleg Rate (°/100usft)	Build Rate (°/100usft)	Turn Rate (°/100usft)
10,300.00	90.00	359.39	7,421.00	2,153.94	368.92	2,168.99	0.00	0.00	0.00
10,400.00	90.00	359.39	7,421.00	2,253.93	367.85	2,268.82	0.00	0.00	0.00
10,500.00	90.00	359.39	7,421.00	2,353.93	366.78	2,368.65	0.00	0.00	0.00
10,600.00	90.00	359.39	7,421.00	2,453.92	365.71	2,468.48	0.00	0.00	0.00
10,700.00	90.00	359.39	7,421.00	2,553.92	364.63	2,568.31	0.00	0.00	0.00
10,800.00	90.00	359.39	7,421.00	2,653.91	363.56	2,668.14	0.00	0.00	0.00
10,900.00	90.00	359.39	7,421.00	2,753.90	362.49	2,767.98	0.00	0.00	0.00
11,000.00	90.00	359.39	7,421.00	2,853.90	361.42	2,867.81	0.00	0.00	0.00
11,100.00	90.00	359.39	7,421.00	2,953.89	360.35	2,967.64	0.00	0.00	0.00
11,200.00	90.00	359.39	7,421.00	3,053.89	359.27	3,067.47	0.00	0.00	0.00
11,300.00	90.00	359.39	7,421.00	3,153.88	358.20	3,167.30	0.00	0.00	0.00
11,400.00	90.00	359.39	7,421.00	3,253.88	357.13	3,267.13	0.00	0.00	0.00
11,500.00	90.00	359.39	7,421.00	3,353.87	356.06	3,366.96	0.00	0.00	0.00
11,600.00	90.00	359.39	7,421.00	3,453.86	354.98	3,466.80	0.00	0.00	0.00
11,700.00	90.00	359.39	7,421.00	3,553.86	353.91	3,566.63	0.00	0.00	0.00
11,800.00	90.00	359.39	7,421.00	3,653.85	352.84	3,666.46	0.00	0.00	0.00
11,900.00	90.00	359.39	7,421.00	3,753.85	351.77	3,766.29	0.00	0.00	0.00
12,000.00	90.00	359.39	7,421.00	3,853.84	350.70	3,866.12	0.00	0.00	0.00
12,100.00	90.00	359.39	7,421.00	3,953.84	349.62	3,965.95	0.00	0.00	0.00
12,200.00	90.00	359.39	7,421.00	4,053.83	348.55	4,065.78	0.00	0.00	0.00
12,300.00	90.00	359.39	7,421.00	4,153.82	347.48	4,165.62	0.00	0.00	0.00
12,400.00	90.00	359.39	7,421.00	4,253.82	346.41	4,265.45	0.00	0.00	0.00
12,500.00	90.00	359.39	7,421.00	4,353.81	345.33	4,365.28	0.00	0.00	0.00
12,600.00	90.00	359.39	7,421.00	4,453.81	344.26	4,465.11	0.00	0.00	0.00
12,700.00	90.00	359.39	7,421.00	4,553.80	343.19	4,564.94	0.00	0.00	0.00
12,800.00	90.00	359.39	7,421.00	4,653.79	342.12	4,664.77	0.00	0.00	0.00
12,900.00	90.00	359.39	7,421.00	4,753.79	341.04	4,764.60	0.00	0.00	0.00
13,000.00	90.00	359.39	7,421.00	4,853.78	339.97	4,864.44	0.00	0.00	0.00
13,100.00	90.00	359.39	7,421.00	4,953.78	338.90	4,964.27	0.00	0.00	0.00
13,200.00	90.00	359.39	7,421.00	5,053.77	337.83	5,064.10	0.00	0.00	0.00
13,300.00	90.00	359.39	7,421.00	5,153.77	336.76	5,163.93	0.00	0.00	0.00
13,400.00	90.00	359.39	7,421.00	5,253.76	335.68	5,263.76	0.00	0.00	0.00
13,500.00	90.00	359.39	7,421.00	5,353.75	334.61	5,363.59	0.00	0.00	0.00
13,600.00	90.00	359.39	7,421.00	5,453.75	333.54	5,463.42	0.00	0.00	0.00
13,700.00	90.00	359.39	7,421.00	5,553.74	332.47	5,563.26	0.00	0.00	0.00
13,800.00	90.00	359.39	7,421.00	5,653.74	331.39	5,663.09	0.00	0.00	0.00
13,900.00	90.00	359.39	7,421.00	5,753.73	330.32	5,762.92	0.00	0.00	0.00
14,000.00	90.00	359.39	7,421.00	5,853.73	329.25	5,862.75	0.00	0.00	0.00
14,100.00	90.00	359.39	7,421.00	5,953.72	328.18	5,962.58	0.00	0.00	0.00
14,200.00	90.00	359.39	7,421.00	6,053.71	327.11	6,062.41	0.00	0.00	0.00
14,300.00	90.00	359.39	7,421.00	6,153.71	326.03	6,162.24	0.00	0.00	0.00
14,400.00	90.00	359.39	7,421.00	6,253.70	324.96	6,262.08	0.00	0.00	0.00
14,500.00	90.00	359.39	7,421.00	6,353.70	323.89	6,361.91	0.00	0.00	0.00
14,600.00	90.00	359.39	7,421.00	6,453.69	322.82	6,461.74	0.00	0.00	0.00
14,700.00	90.00	359.39	7,421.00	6,553.69	321.74	6,561.57	0.00	0.00	0.00
14,800.00	90.00	359.39	7,421.00	6,653.68	320.67	6,661.40	0.00	0.00	0.00
14,892.05	90.00	359.39	7,421.00	6,745.72	319.68	6,753.30	0.00	0.00	0.00
DAVIS 1G-9H-G266 BHL									

Cathedral Energy Services

Planning Report

Database:	USA EDM 5000 Multi Users DB	Local Co-ordinate Reference:	Well DAVIS 1G-9H-G266 - Slot DAVIS 1G-9H
Company:	Crestone Peak Resources	TVD Reference:	23' KB @ 4940.00usft
Project:	DJ BASIN	MD Reference:	23' KB @ 4940.00usft
Site:	S4-T2N-R66W	North Reference:	True
Well:	DAVIS 1G-9H-G266	Survey Calculation Method:	Minimum Curvature
Wellbore:	OH		
Design:	PLAN #3		

Design Targets									
Target Name	Dip Angle	Dip Dir.	TVD	+N/-S	+E/-W	Northing	Easting	Latitude	Longitude
- hit/miss target	(°)	(°)	(usft)	(usft)	(usft)	(usft)	(usft)		
- Shape									
DAVIS 1G-9H-G266 BHI - plan hits target center - Point	0.00	0.00	7,421.00	6,745.72	319.68	1,306,701.87	3,202,119.93	40.173029	-104.776696
DAVIS 1G-9H-G266 TP2 - plan hits target center - Point	0.00	0.00	7,421.00	-230.15	394.49	1,299,726.84	3,202,251.54	40.153880	-104.776429