



CRESTONE PEAK
RESOURCES

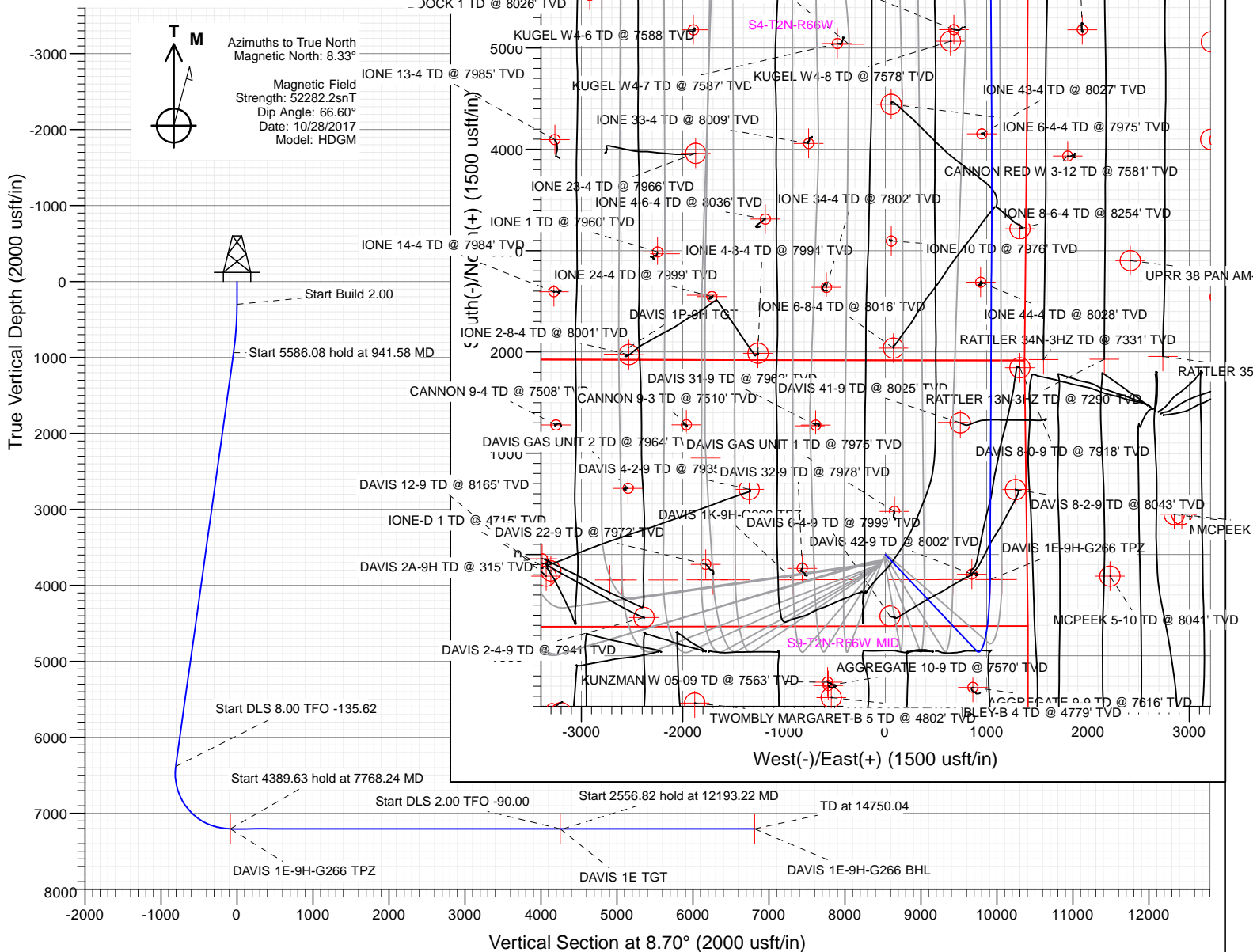
SECTION DETAILS

Sec	MD	Inc	Azi	TVD	+N/-S	+E/-W	Dleg	TFace	Vsect	Target
1	0.00	0.00	0.00	0.00	0.00	0.00	0.00	0.00	0.00	
2	300.00	0.00	0.00	300.00	0.00	0.00	0.00	0.00	0.00	
3	941.58	12.83	136.58	936.23	-51.96	49.17	2.00	136.58	-43.93	
4	6527.66	12.83	136.58	6382.81	-953.06	901.86	0.00	0.00	-805.65	
5	7768.24	90.00	0.24	7204.00	-246.71	1033.88	8.00	-135.62	-87.45	DAVIS 1E-9H-G266 TPZ
6	12157.87	90.00	0.24	7204.00	4142.88	1051.93	0.00	0.00	4254.34	DAVIS 1E TGT
7	12193.22	90.00	359.53	7204.00	4178.23	1051.86	2.00	-90.00	4289.27	
8	14750.04	90.00	359.53	7204.00	6734.96	1030.83	0.00	0.00	6813.40	DAVIS 1E-9H-G266 BHL

PLAN #3
DAVIS 1E-9H-G266
23 KB @ 4940.00usft
Ground Level @ 4917.00
North American Datum 1983
Well DAVIS 1E-9H-G266 - Slot DAVIS 1E-9H, True North

Type	Target	No Target (Freehand)	Azimuth	Origin	Type	N/S	E/W	From TVD
Name	TVD		+N/-S	+E/-W	Latitude		Longitude	
DAVIS 1E TGT	7204.00		4142.88	1051.93	40.165932		-104.774040	
DAVIS 1E-9H-G266 BHL	7204.00		6734.96	1030.83	40.173947		-104.774105	
DAVIS 1E-9H-G266 TPZ	7204.00		-246.71	1033.88	40.153882		-104.774105	

Project: DJ BASIN
Site: S4-T2N-R66W
Well: DAVIS 1E-9H-G266
Wellbore: OH
Design: PLAN #3



WELL DETAILS: DAVIS 1E-9H-G266

+N/-S	+E/-W	Northing	Easting	Latitude	Longitude	
0.00	0.00	1299971.22	3201864.97	40.154559	-104.777804	DAVIS 1E-9H

CATHEDRAL



Crestone Peak Resources

DJ BASIN

S4-T2N-R66W

DAVIS 1E-9H-G266 - Slot DAVIS 1E-9H

OH

Plan: PLAN #3

Standard Planning Report

11 January, 2018

Cathedral Energy Services

Planning Report

Database:	USA EDM 5000 Multi Users DB	Local Co-ordinate Reference:	Well DAVIS 1E-9H-G266 - Slot DAVIS 1E-9H
Company:	Crestone Peak Resources	TVD Reference:	23' KB @ 4940.00usft
Project:	DJ BASIN	MD Reference:	23' KB @ 4940.00usft
Site:	S4-T2N-R66W	North Reference:	True
Well:	DAVIS 1E-9H-G266	Survey Calculation Method:	Minimum Curvature
Wellbore:	OH		
Design:	PLAN #3		

Project	DJ BASIN		
Map System:	US State Plane 1983	System Datum:	Mean Sea Level
Geo Datum:	North American Datum 1983		
Map Zone:	Colorado Northern Zone		

Site		S4-T2N-R66W			
Site Position:		Northing:	1,300,048.95 usft	Latitude:	40.154783
From:	Map	Easting:	3,201,389.75 usft	Longitude:	-104.779502
Position Uncertainty:	0.00 usft	Slot Radius:	13-3/16 "	Grid Convergence:	0.47 °

Well	DAVIS 1E-9H-G266 - Slot DAVIS 1E-9H					
Well Position	+N/-S	-81.58 usft	Northing:	1,299,971.22 usft	Latitude:	40.154559
	+E/-W	474.57 usft	Easting:	3,201,864.97 usft	Longitude:	-104.777804
Position Uncertainty		0.00 usft	Wellhead Elevation:		Ground Level:	4,917.00 usft

Wellbore	OH				
Magnetics	Model Name	Sample Date	Declination (°)	Dip Angle (°)	Field Strength (nT)
	HDGM	10/28/2017	8.33	66.60	52,282.20000000

Design	PLAN #3			
Audit Notes:				
Version:	Phase:	PLAN	Tie On Depth:	0.00
Vertical Section:	Depth From (TVD) (usft)	+N/-S (usft)	+E/-W (usft)	Direction (°)
	0.00	0.00	0.00	8.70

Plan Sections										
Measured Depth (usft)	Inclination (°)	Azimuth (°)	Vertical Depth (usft)	+N/-S (usft)	+E/-W (usft)	Dogleg Rate (°/100usft)	Build Rate (°/100usft)	Turn Rate (°/100usft)	TFO (°)	Target
0.00	0.00	0.00	0.00	0.00	0.00	0.00	0.00	0.00	0.00	
300.00	0.00	0.00	300.00	0.00	0.00	0.00	0.00	0.00	0.00	
941.58	12.83	136.58	936.23	-51.96	49.17	2.00	2.00	0.00	136.58	
6,527.66	12.83	136.58	6,382.81	-953.06	901.86	0.00	0.00	0.00	0.00	
7,768.24	90.00	0.24	7,204.00	-246.71	1,033.88	8.00	6.22	-10.99	-135.62	DAVIS 1E-9H-G266 T
12,157.87	90.00	0.24	7,204.00	4,142.88	1,051.93	0.00	0.00	0.00	0.00	DAVIS 1E TGT
12,193.22	90.00	359.53	7,204.00	4,178.23	1,051.86	2.00	0.00	-2.00	-90.00	
14,750.04	90.00	359.53	7,204.00	6,734.96	1,030.83	0.00	0.00	0.00	0.00	DAVIS 1E-9H-G266 E

Cathedral Energy Services

Planning Report

Database:	USA EDM 5000 Multi Users DB	Local Co-ordinate Reference:	Well DAVIS 1E-9H-G266 - Slot DAVIS 1E-9H
Company:	Crestone Peak Resources	TVD Reference:	23' KB @ 4940.00usft
Project:	DJ BASIN	MD Reference:	23' KB @ 4940.00usft
Site:	S4-T2N-R66W	North Reference:	True
Well:	DAVIS 1E-9H-G266	Survey Calculation Method:	Minimum Curvature
Wellbore:	OH		
Design:	PLAN #3		

Planned Survey									
Measured Depth (usft)	Inclination (°)	Azimuth (°)	Vertical Depth (usft)	+N/-S (usft)	+E/-W (usft)	Vertical Section (usft)	Dogleg Rate (°/100usft)	Build Rate (°/100usft)	Turn Rate (°/100usft)
0.00	0.00	0.00	0.00	0.00	0.00	0.00	0.00	0.00	0.00
100.00	0.00	0.00	100.00	0.00	0.00	0.00	0.00	0.00	0.00
200.00	0.00	0.00	200.00	0.00	0.00	0.00	0.00	0.00	0.00
300.00	0.00	0.00	300.00	0.00	0.00	0.00	0.00	0.00	0.00
400.00	2.00	136.58	399.98	-1.27	1.20	-1.07	2.00	2.00	0.00
500.00	4.00	136.58	499.84	-5.07	4.80	-4.28	2.00	2.00	0.00
600.00	6.00	136.58	599.45	-11.40	10.79	-9.64	2.00	2.00	0.00
700.00	8.00	136.58	698.70	-20.25	19.16	-17.12	2.00	2.00	0.00
800.00	10.00	136.58	797.47	-31.61	29.91	-26.72	2.00	2.00	0.00
900.00	12.00	136.58	895.62	-45.47	43.03	-38.44	2.00	2.00	0.00
941.58	12.83	136.58	936.23	-51.96	49.17	-43.93	2.00	2.00	0.00
1,000.00	12.83	136.58	993.19	-61.39	58.09	-51.89	0.00	0.00	0.00
1,100.00	12.83	136.58	1,090.69	-77.52	73.35	-65.53	0.00	0.00	0.00
1,200.00	12.83	136.58	1,188.20	-93.65	88.62	-79.17	0.00	0.00	0.00
1,300.00	12.83	136.58	1,285.70	-109.78	103.88	-92.80	0.00	0.00	0.00
1,400.00	12.83	136.58	1,383.20	-125.91	119.15	-106.44	0.00	0.00	0.00
1,500.00	12.83	136.58	1,480.71	-142.04	134.41	-120.07	0.00	0.00	0.00
1,600.00	12.83	136.58	1,578.21	-158.18	149.68	-133.71	0.00	0.00	0.00
1,700.00	12.83	136.58	1,675.71	-174.31	164.94	-147.35	0.00	0.00	0.00
1,800.00	12.83	136.58	1,773.21	-190.44	180.21	-160.98	0.00	0.00	0.00
1,900.00	12.83	136.58	1,870.72	-206.57	195.47	-174.62	0.00	0.00	0.00
2,000.00	12.83	136.58	1,968.22	-222.70	210.74	-188.25	0.00	0.00	0.00
2,100.00	12.83	136.58	2,065.72	-238.83	226.00	-201.89	0.00	0.00	0.00
2,200.00	12.83	136.58	2,163.22	-254.96	241.26	-215.53	0.00	0.00	0.00
2,300.00	12.83	136.58	2,260.73	-271.09	256.53	-229.16	0.00	0.00	0.00
2,400.00	12.83	136.58	2,358.23	-287.22	271.79	-242.80	0.00	0.00	0.00
2,500.00	12.83	136.58	2,455.73	-303.36	287.06	-256.43	0.00	0.00	0.00
2,600.00	12.83	136.58	2,553.24	-319.49	302.32	-270.07	0.00	0.00	0.00
2,700.00	12.83	136.58	2,650.74	-335.62	317.59	-283.71	0.00	0.00	0.00
2,800.00	12.83	136.58	2,748.24	-351.75	332.85	-297.34	0.00	0.00	0.00
2,900.00	12.83	136.58	2,845.74	-367.88	348.12	-310.98	0.00	0.00	0.00
3,000.00	12.83	136.58	2,943.25	-384.01	363.38	-324.61	0.00	0.00	0.00
3,100.00	12.83	136.58	3,040.75	-400.14	378.64	-338.25	0.00	0.00	0.00
3,200.00	12.83	136.58	3,138.25	-416.27	393.91	-351.89	0.00	0.00	0.00
3,300.00	12.83	136.58	3,235.75	-432.41	409.17	-365.52	0.00	0.00	0.00
3,400.00	12.83	136.58	3,333.26	-448.54	424.44	-379.16	0.00	0.00	0.00
3,500.00	12.83	136.58	3,430.76	-464.67	439.70	-392.79	0.00	0.00	0.00
3,600.00	12.83	136.58	3,528.26	-480.80	454.97	-406.43	0.00	0.00	0.00
3,700.00	12.83	136.58	3,625.77	-496.93	470.23	-420.07	0.00	0.00	0.00
3,800.00	12.83	136.58	3,723.27	-513.06	485.50	-433.70	0.00	0.00	0.00
3,900.00	12.83	136.58	3,820.77	-529.19	500.76	-447.34	0.00	0.00	0.00
4,000.00	12.83	136.58	3,918.27	-545.32	516.02	-460.97	0.00	0.00	0.00
4,100.00	12.83	136.58	4,015.78	-561.45	531.29	-474.61	0.00	0.00	0.00
4,200.00	12.83	136.58	4,113.28	-577.59	546.55	-488.25	0.00	0.00	0.00
4,300.00	12.83	136.58	4,210.78	-593.72	561.82	-501.88	0.00	0.00	0.00
4,400.00	12.83	136.58	4,308.28	-609.85	577.08	-515.52	0.00	0.00	0.00
4,500.00	12.83	136.58	4,405.79	-625.98	592.35	-529.15	0.00	0.00	0.00
4,600.00	12.83	136.58	4,503.29	-642.11	607.61	-542.79	0.00	0.00	0.00
4,700.00	12.83	136.58	4,600.79	-658.24	622.88	-556.43	0.00	0.00	0.00
4,800.00	12.83	136.58	4,698.29	-674.37	638.14	-570.06	0.00	0.00	0.00
4,900.00	12.83	136.58	4,795.80	-690.50	653.41	-583.70	0.00	0.00	0.00
5,000.00	12.83	136.58	4,893.30	-706.64	668.67	-597.33	0.00	0.00	0.00
5,100.00	12.83	136.58	4,990.80	-722.77	683.93	-610.97	0.00	0.00	0.00
5,200.00	12.83	136.58	5,088.31	-738.90	699.20	-624.61	0.00	0.00	0.00

Cathedral Energy Services

Planning Report

Database:	USA EDM 5000 Multi Users DB	Local Co-ordinate Reference:	Well DAVIS 1E-9H-G266 - Slot DAVIS 1E-9H
Company:	Crestone Peak Resources	TVD Reference:	23' KB @ 4940.00usft
Project:	DJ BASIN	MD Reference:	23' KB @ 4940.00usft
Site:	S4-T2N-R66W	North Reference:	True
Well:	DAVIS 1E-9H-G266	Survey Calculation Method:	Minimum Curvature
Wellbore:	OH		
Design:	PLAN #3		

Planned Survey									
Measured Depth (usft)	Inclination (°)	Azimuth (°)	Vertical Depth (usft)	+N/-S (usft)	+E/-W (usft)	Vertical Section (usft)	Dogleg Rate (°/100usft)	Build Rate (°/100usft)	Turn Rate (°/100usft)
5,300.00	12.83	136.58	5,185.81	-755.03	714.46	-638.24	0.00	0.00	0.00
5,400.00	12.83	136.58	5,283.31	-771.16	729.73	-651.88	0.00	0.00	0.00
5,500.00	12.83	136.58	5,380.81	-787.29	744.99	-665.51	0.00	0.00	0.00
5,600.00	12.83	136.58	5,478.32	-803.42	760.26	-679.15	0.00	0.00	0.00
5,700.00	12.83	136.58	5,575.82	-819.55	775.52	-692.79	0.00	0.00	0.00
5,800.00	12.83	136.58	5,673.32	-835.68	790.79	-706.42	0.00	0.00	0.00
5,900.00	12.83	136.58	5,770.82	-851.82	806.05	-720.06	0.00	0.00	0.00
6,000.00	12.83	136.58	5,868.33	-867.95	821.31	-733.70	0.00	0.00	0.00
6,100.00	12.83	136.58	5,965.83	-884.08	836.58	-747.33	0.00	0.00	0.00
6,200.00	12.83	136.58	6,063.33	-900.21	851.84	-760.97	0.00	0.00	0.00
6,300.00	12.83	136.58	6,160.84	-916.34	867.11	-774.60	0.00	0.00	0.00
6,400.00	12.83	136.58	6,258.34	-932.47	882.37	-788.24	0.00	0.00	0.00
6,500.00	12.83	136.58	6,355.84	-948.60	897.64	-801.88	0.00	0.00	0.00
6,527.66	12.83	136.58	6,382.81	-953.06	901.86	-805.65	0.00	0.00	0.00
6,600.00	9.58	111.50	6,453.80	-961.11	912.99	-811.92	8.00	-4.50	-34.67
6,700.00	10.01	63.16	6,552.51	-960.23	928.51	-808.70	8.00	0.44	-48.35
6,800.00	15.36	35.16	6,650.12	-945.46	943.92	-791.76	8.00	5.34	-27.99
6,900.00	22.32	22.75	6,744.74	-917.07	958.91	-761.44	8.00	6.97	-12.41
7,000.00	29.79	16.17	6,834.53	-875.63	973.20	-718.31	8.00	7.47	-6.58
7,100.00	37.47	12.07	6,917.74	-821.94	986.51	-663.22	8.00	7.67	-4.10
7,200.00	45.24	9.20	6,992.75	-757.04	998.57	-597.25	8.00	7.77	-2.87
7,300.00	53.07	7.02	7,058.10	-682.20	1,009.15	-521.67	8.00	7.83	-2.18
7,400.00	60.93	5.25	7,112.52	-598.88	1,018.05	-437.96	8.00	7.86	-1.77
7,500.00	68.81	3.73	7,154.95	-508.69	1,025.09	-347.74	8.00	7.88	-1.52
7,600.00	76.71	2.36	7,184.57	-413.40	1,030.14	-252.78	8.00	7.89	-1.37
7,700.00	84.61	1.09	7,200.79	-314.85	1,033.10	-154.92	8.00	7.90	-1.28
7,768.24	90.00	0.24	7,204.00	-246.71	1,033.88	-87.45	8.00	7.90	-1.25
DAVIS 1E-9H-G266 TPZ									
7,800.00	90.00	0.24	7,204.00	-214.95	1,034.01	-56.04	0.00	0.00	0.00
7,900.00	90.00	0.24	7,204.00	-114.95	1,034.43	42.87	0.00	0.00	0.00
8,000.00	90.00	0.24	7,204.00	-14.95	1,034.84	141.78	0.00	0.00	0.00
8,100.00	90.00	0.24	7,204.00	85.04	1,035.25	240.69	0.00	0.00	0.00
8,200.00	90.00	0.24	7,204.00	185.04	1,035.66	339.60	0.00	0.00	0.00
8,300.00	90.00	0.24	7,204.00	285.04	1,036.07	438.51	0.00	0.00	0.00
8,400.00	90.00	0.24	7,204.00	385.04	1,036.48	537.42	0.00	0.00	0.00
8,500.00	90.00	0.24	7,204.00	485.04	1,036.89	636.33	0.00	0.00	0.00
8,600.00	90.00	0.24	7,204.00	585.04	1,037.30	735.24	0.00	0.00	0.00
8,700.00	90.00	0.24	7,204.00	685.04	1,037.71	834.15	0.00	0.00	0.00
8,800.00	90.00	0.24	7,204.00	785.04	1,038.13	933.06	0.00	0.00	0.00
8,900.00	90.00	0.24	7,204.00	885.04	1,038.54	1,031.97	0.00	0.00	0.00
9,000.00	90.00	0.24	7,204.00	985.04	1,038.95	1,130.89	0.00	0.00	0.00
9,100.00	90.00	0.24	7,204.00	1,085.04	1,039.36	1,229.80	0.00	0.00	0.00
9,200.00	90.00	0.24	7,204.00	1,185.04	1,039.77	1,328.71	0.00	0.00	0.00
9,300.00	90.00	0.24	7,204.00	1,285.03	1,040.18	1,427.62	0.00	0.00	0.00
9,400.00	90.00	0.24	7,204.00	1,385.03	1,040.59	1,526.53	0.00	0.00	0.00
9,500.00	90.00	0.24	7,204.00	1,485.03	1,041.00	1,625.44	0.00	0.00	0.00
9,600.00	90.00	0.24	7,204.00	1,585.03	1,041.42	1,724.35	0.00	0.00	0.00
9,700.00	90.00	0.24	7,204.00	1,685.03	1,041.83	1,823.26	0.00	0.00	0.00
9,800.00	90.00	0.24	7,204.00	1,785.03	1,042.24	1,922.17	0.00	0.00	0.00
9,900.00	90.00	0.24	7,204.00	1,885.03	1,042.65	2,021.08	0.00	0.00	0.00
10,000.00	90.00	0.24	7,204.00	1,985.03	1,043.06	2,119.99	0.00	0.00	0.00
10,100.00	90.00	0.24	7,204.00	2,085.03	1,043.47	2,218.90	0.00	0.00	0.00
10,200.00	90.00	0.24	7,204.00	2,185.03	1,043.88	2,317.81	0.00	0.00	0.00

Cathedral Energy Services

Planning Report

Database:	USA EDM 5000 Multi Users DB	Local Co-ordinate Reference:	Well DAVIS 1E-9H-G266 - Slot DAVIS 1E-9H
Company:	Crestone Peak Resources	TVD Reference:	23' KB @ 4940.00usft
Project:	DJ BASIN	MD Reference:	23' KB @ 4940.00usft
Site:	S4-T2N-R66W	North Reference:	True
Well:	DAVIS 1E-9H-G266	Survey Calculation Method:	Minimum Curvature
Wellbore:	OH		
Design:	PLAN #3		

Planned Survey										
Measured Depth (usft)	Inclination (°)	Azimuth (°)	Vertical Depth (usft)	+N/-S (usft)	+E/-W (usft)	Vertical Section (usft)	Dogleg Rate (°/100usft)	Build Rate (°/100usft)	Turn Rate (°/100usft)	
10,300.00	90.00	0.24	7,204.00	2,285.03	1,044.29	2,416.72	0.00	0.00	0.00	
10,400.00	90.00	0.24	7,204.00	2,385.03	1,044.71	2,515.63	0.00	0.00	0.00	
10,500.00	90.00	0.24	7,204.00	2,485.02	1,045.12	2,614.54	0.00	0.00	0.00	
10,600.00	90.00	0.24	7,204.00	2,585.02	1,045.53	2,713.45	0.00	0.00	0.00	
10,700.00	90.00	0.24	7,204.00	2,685.02	1,045.94	2,812.36	0.00	0.00	0.00	
10,800.00	90.00	0.24	7,204.00	2,785.02	1,046.35	2,911.27	0.00	0.00	0.00	
10,900.00	90.00	0.24	7,204.00	2,885.02	1,046.76	3,010.18	0.00	0.00	0.00	
11,000.00	90.00	0.24	7,204.00	2,985.02	1,047.17	3,109.09	0.00	0.00	0.00	
11,100.00	90.00	0.24	7,204.00	3,085.02	1,047.58	3,208.00	0.00	0.00	0.00	
11,200.00	90.00	0.24	7,204.00	3,185.02	1,047.99	3,306.91	0.00	0.00	0.00	
11,300.00	90.00	0.24	7,204.00	3,285.02	1,048.41	3,405.82	0.00	0.00	0.00	
11,400.00	90.00	0.24	7,204.00	3,385.02	1,048.82	3,504.73	0.00	0.00	0.00	
11,500.00	90.00	0.24	7,204.00	3,485.02	1,049.23	3,603.64	0.00	0.00	0.00	
11,600.00	90.00	0.24	7,204.00	3,585.01	1,049.64	3,702.55	0.00	0.00	0.00	
11,700.00	90.00	0.24	7,204.00	3,685.01	1,050.05	3,801.46	0.00	0.00	0.00	
11,800.00	90.00	0.24	7,204.00	3,785.01	1,050.46	3,900.37	0.00	0.00	0.00	
11,900.00	90.00	0.24	7,204.00	3,885.01	1,050.87	3,999.28	0.00	0.00	0.00	
12,000.00	90.00	0.24	7,204.00	3,985.01	1,051.28	4,098.19	0.00	0.00	0.00	
12,100.00	90.00	0.24	7,204.00	4,085.01	1,051.70	4,197.10	0.00	0.00	0.00	
12,157.87	90.00	0.24	7,204.00	4,142.88	1,051.93	4,254.34	0.00	0.00	0.00	
DAVIS 1E TGT										
12,193.22	90.00	359.53	7,204.00	4,178.23	1,051.86	4,289.27	2.00	0.00	-2.00	
12,200.00	90.00	359.53	7,204.00	4,185.01	1,051.81	4,295.97	0.00	0.00	0.00	
12,300.00	90.00	359.53	7,204.00	4,285.01	1,050.98	4,394.69	0.00	0.00	0.00	
12,400.00	90.00	359.53	7,204.00	4,385.00	1,050.16	4,493.41	0.00	0.00	0.00	
12,500.00	90.00	359.53	7,204.00	4,485.00	1,049.34	4,592.13	0.00	0.00	0.00	
12,600.00	90.00	359.53	7,204.00	4,585.00	1,048.52	4,690.85	0.00	0.00	0.00	
12,700.00	90.00	359.53	7,204.00	4,684.99	1,047.69	4,789.57	0.00	0.00	0.00	
12,800.00	90.00	359.53	7,204.00	4,784.99	1,046.87	4,888.29	0.00	0.00	0.00	
12,900.00	90.00	359.53	7,204.00	4,884.99	1,046.05	4,987.01	0.00	0.00	0.00	
13,000.00	90.00	359.53	7,204.00	4,984.98	1,045.22	5,085.74	0.00	0.00	0.00	
13,100.00	90.00	359.53	7,204.00	5,084.98	1,044.40	5,184.46	0.00	0.00	0.00	
13,200.00	90.00	359.53	7,204.00	5,184.98	1,043.58	5,283.18	0.00	0.00	0.00	
13,300.00	90.00	359.53	7,204.00	5,284.97	1,042.76	5,381.90	0.00	0.00	0.00	
13,400.00	90.00	359.53	7,204.00	5,384.97	1,041.93	5,480.62	0.00	0.00	0.00	
13,500.00	90.00	359.53	7,204.00	5,484.97	1,041.11	5,579.34	0.00	0.00	0.00	
13,600.00	90.00	359.53	7,204.00	5,584.96	1,040.29	5,678.06	0.00	0.00	0.00	
13,700.00	90.00	359.53	7,204.00	5,684.96	1,039.47	5,776.78	0.00	0.00	0.00	
13,800.00	90.00	359.53	7,204.00	5,784.96	1,038.64	5,875.50	0.00	0.00	0.00	
13,900.00	90.00	359.53	7,204.00	5,884.95	1,037.82	5,974.23	0.00	0.00	0.00	
14,000.00	90.00	359.53	7,204.00	5,984.95	1,037.00	6,072.95	0.00	0.00	0.00	
14,100.00	90.00	359.53	7,204.00	6,084.95	1,036.18	6,171.67	0.00	0.00	0.00	
14,200.00	90.00	359.53	7,204.00	6,184.94	1,035.35	6,270.39	0.00	0.00	0.00	
14,300.00	90.00	359.53	7,204.00	6,284.94	1,034.53	6,369.11	0.00	0.00	0.00	
14,400.00	90.00	359.53	7,204.00	6,384.94	1,033.71	6,467.83	0.00	0.00	0.00	
14,500.00	90.00	359.53	7,204.00	6,484.93	1,032.89	6,566.55	0.00	0.00	0.00	
14,600.00	90.00	359.53	7,204.00	6,584.93	1,032.06	6,665.27	0.00	0.00	0.00	
14,700.00	90.00	359.53	7,204.00	6,684.93	1,031.24	6,763.99	0.00	0.00	0.00	
14,750.04	90.00	359.53	7,204.00	6,734.96	1,030.83	6,813.40	0.00	0.00	0.00	
DAVIS 1E-9H-G266 BHL										

Cathedral Energy Services

Planning Report

Database:	USA EDM 5000 Multi Users DB	Local Co-ordinate Reference:	Well DAVIS 1E-9H-G266 - Slot DAVIS 1E-9H
Company:	Crestone Peak Resources	TVD Reference:	23' KB @ 4940.00usft
Project:	DJ BASIN	MD Reference:	23' KB @ 4940.00usft
Site:	S4-T2N-R66W	North Reference:	True
Well:	DAVIS 1E-9H-G266	Survey Calculation Method:	Minimum Curvature
Wellbore:	OH		
Design:	PLAN #3		

Design Targets									
Target Name - hit/miss target - Shape	Dip Angle (°)	Dip Dir. (°)	TVD (usft)	+N/-S (usft)	+E/-W (usft)	Northing (usft)	Easting (usft)	Latitude	Longitude
DAVIS 1E-9H-G266 TP2 - plan hits target center - Point	0.00	0.00	7,204.00	-246.71	1,033.88	1,299,732.94	3,202,900.83	40.153882	-104.774106
DAVIS 1E TGT - plan hits target center - Point	0.00	0.00	7,204.00	4,142.88	1,051.93	1,304,122.53	3,202,883.13	40.165932	-104.774040
DAVIS 1E-9H-G266 BHL - plan hits target center - Point	0.00	0.00	7,204.00	6,734.96	1,030.83	1,306,714.36	3,202,840.92	40.173048	-104.774116