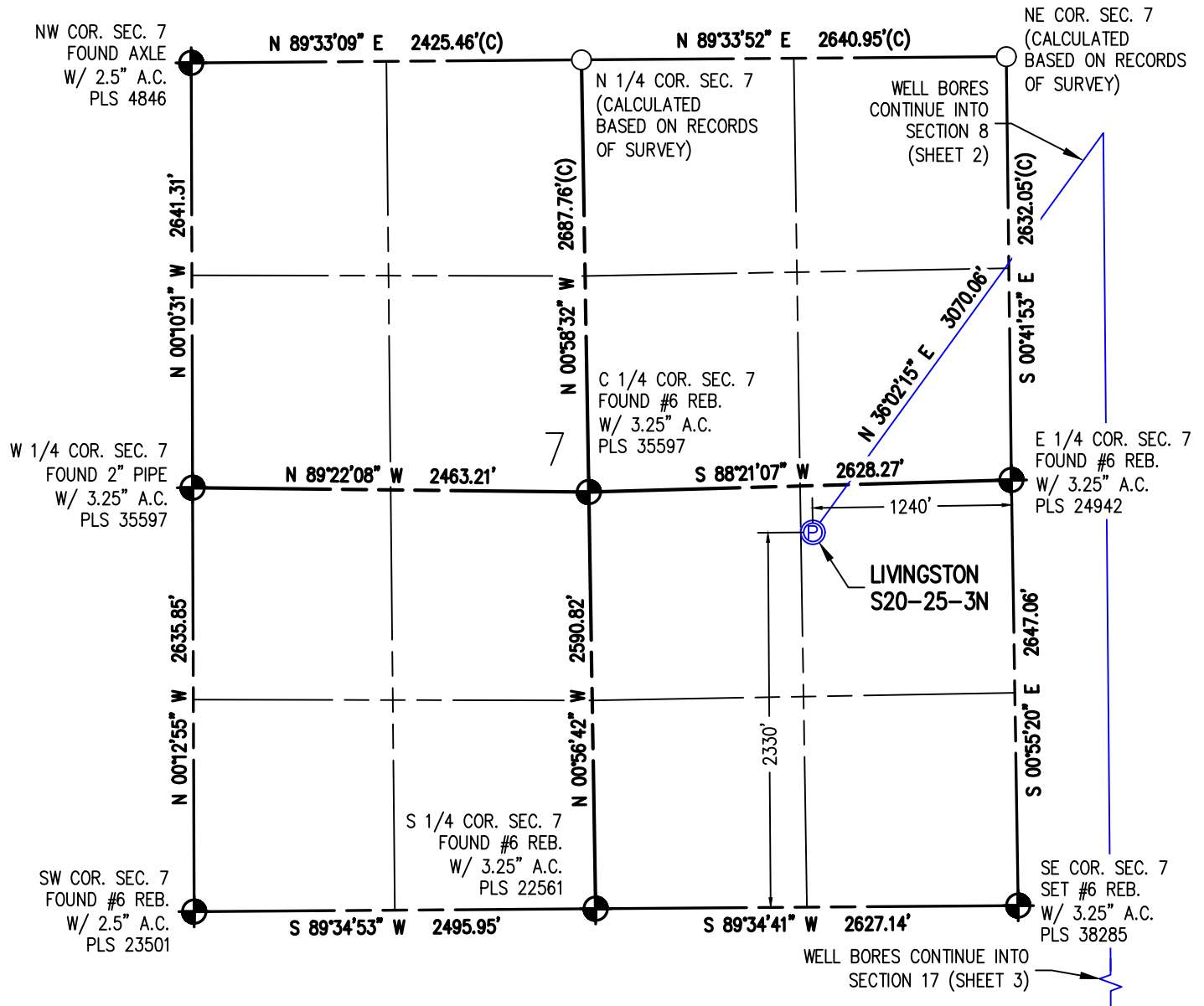


# WELL LOCATION PLAT LIVINGSTON S20-25-3N

NE1/4 SE1/4 SEC. 7, T1S, R68W, 6TH P.M.



I HEREBY CERTIFY THAT THIS WELL LOCATION CERTIFICATE WAS PREPARED BY ME, OR UNDER MY DIRECT SUPERVISION, THAT THE FIELD WORK WAS COMPLETED ON 11/10/2017, THAT IT IS NOT A LAND SURVEY PLAT OR AN IMPROVEMENT SURVEY PLAT, AND THAT IT IS NOT TO BE RELIED UPON FOR ESTABLISHMENT OF FENCE, BUILDING OR OTHER FUTURE IMPROVEMENT LINES.

AARON A. DEMO  
Professional Land Surveyor Registration No. 38285  
State of Colorado  
FOR AND ON BEHALF OF BASELINE ENGINEERING CORP.

N

0 1000'  
Scale 1" = 1000' ft

SURFACE LOCATION  
SEC. 7, T1S, R68W  
GROUND ELEVATION = 5329.2'  
PDOP = 1.3  
LATITUDE = 39.978560°  
LONGITUDE = -105.039094°  
2330' FSL, 1240' FEL  
ENTRY POINT LOCATION  
SEC. 8, T1S, R68W  
LATITUDE = 39.985347°  
LONGITUDE = -105.032605°  
480' FNL, 598' FWL  
BOTTOM HOLE LOCATION  
SEC. 20, T1S, R68W  
LATITUDE = 39.951716°  
LONGITUDE = -105.032450°  
2185' FNL, 552' FWL

## NOTES:

1. INDICATES SECTION CORNER
2. INDICATES CALCULATED CORNER
3. (C) INDICATES CALCULATED DIMENSION
4. ELEVATION BASED ON NAVD88 (GEOID12B)
5. BEARINGS DERIVED FROM COLORADO COORDINATE SYSTEM OF 1983 NORTH ZONE.
6. OPERATOR: TRAVIS WINNICKI
7. IMPROVEMENTS: SEE LOCATION DRAWING FOR ALL VISIBLE IMPROVEMENTS WITHIN 500' OF DISTURBED AREA.
8. WELL FOOTAGES ARE MEASURED AT RIGHT ANGLES TO THE SECTION LINES.

## NEAREST CULTURAL ITEMS:

BUILDING: 951' NW  
BUILDING UNIT: 1348' N  
HIGH OCCUPANCY BUILDING UNIT: 5280'+  
DESIGNATED OUTSIDE ACTIVITY AREA: 5280'+  
PUBLIC ROAD: SHERIDAN HWY 475' SE  
ABOVE GROUND UTILITY: 1282' N  
RAILROAD: 5280'+  
PROPERTY LINE: 290' N  
SURFACE USE: GRASSLAND.  
NEAREST EXISTING WELL: LIVINGSTON 43-07 687' SE

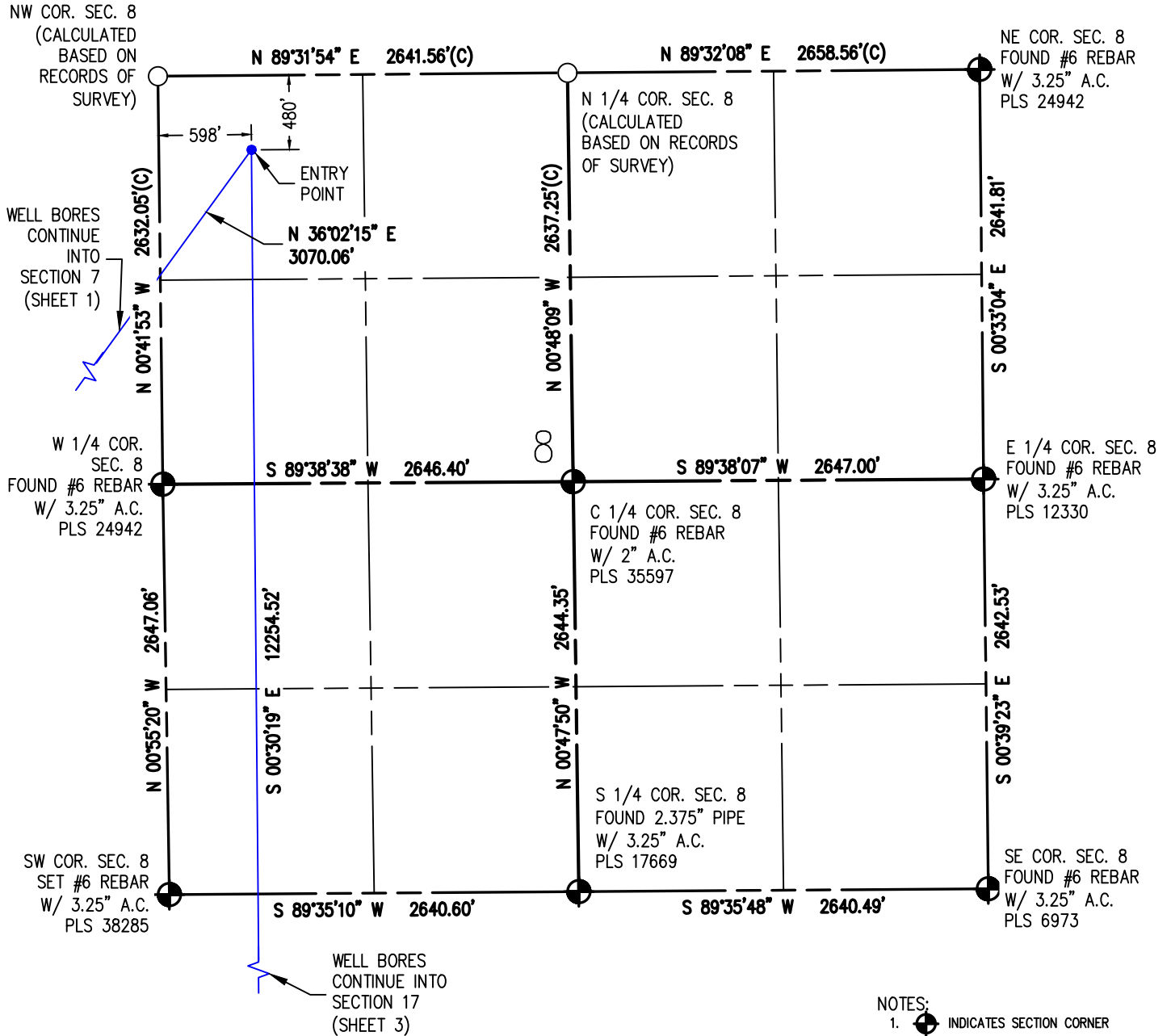


DRAWN BY	CHECKED BY
DAM	AAD
INITIAL SUBMITTAL	12/8/2017
REVISED	1/8/2018
DRAWING SIZE	8.5" X 11"
JOB NO.	EXT01S68W07-01
SHEET	1 OF 4



# WELL LOCATION PLAT LIVINGSTON S20-25-3N

NE1/4 SE1/4 SEC. 7, T1S, R68W, 6TH P.M.



I HEREBY CERTIFY THAT THIS WELL LOCATION CERTIFICATE WAS PREPARED BY ME, OR UNDER MY DIRECT SUPERVISION, THAT THE FIELD WORK WAS COMPLETED ON 11/10/2017, THAT IT IS NOT A LAND SURVEY PLAT OR AN IMPROVEMENT SURVEY PLAT, AND THAT IT IS NOT TO BE RELED UPON FOR ESTABLISHMENT OF FENCE, BUILDING OR OTHER FUTURE IMPROVEMENT LINES.

AARON A. DEMO  
Professional Land Surveyor Registration No. 38285  
State of Colorado  
FOR AND ON BEHALF OF BASELINE ENGINEERING CORP.

N

0 1000'  
Scale 1" = 1000' ft

SURFACE LOCATION  
SEC. 7, T1S, R68W  
GROUND ELEVATION = 5329.2'  
PDOP = 1.3  
LATITUDE = 39.978560°  
LONGITUDE = -105.039094°  
2330' FSL, 1240' FEL  
ENTRY POINT LOCATION  
SEC. 8, T1S, R68W  
LATITUDE = 39.985347°  
LONGITUDE = -105.032605°  
480' FNL, 598' FWL  
BOTTOM HOLE LOCATION  
SEC. 20, T1S, R68W  
LATITUDE = 39.951716°  
LONGITUDE = -105.032450°  
2185' FNL, 552' FWL

## NOTES:

1. INDICATES SECTION CORNER
2. INDICATES CALCULATED CORNER
3. (C) INDICATES CALCULATED DIMENSION
4. ELEVATION BASED ON NAVD88 (GEOID12B)
5. BEARINGS DERIVED FROM COLORADO COORDINATE SYSTEM OF 1983 NORTH ZONE.
6. OPERATOR: TRAVIS WINNIKI
7. IMPROVEMENTS: SEE LOCATION DRAWING FOR ALL VISIBLE IMPROVEMENTS WITHIN 500' OF DISTURBED AREA.
8. WELL FOOTAGES ARE MEASURED AT RIGHT ANGLES TO THE SECTION LINES.

## NEAREST CULTURAL ITEMS:

BUILDING: 951' NW  
BUILDING UNIT: 1348' N  
HIGH OCCUPANCY BUILDING UNIT: 5280'+  
DESIGNATED OUTSIDE ACTIVITY AREA: 5280'+  
PUBLIC ROAD: SHERIDAN HWY 475' SE  
ABOVE GROUND UTILITY: 1282' N  
RAILROAD: 5280'+  
PROPERTY LINE: 290' N  
SURFACE USE: GRASSLAND.  
NEAREST EXISTING WELL: LIVINGSTON 43-07 687' SE



DRAWN BY	CHECKED BY
DAM	AAD
INITIAL SUBMITTAL	12/8/2017
REVISED	1/8/2018
DRAWING SIZE	8.5" X 11"
JOB NO.	EXT01S08W07-01
SHEET	2 OF 4

**BASELINE**  
Engineering - Planning - Surveying  
4007 S. LINCOLN AVENUE, SUITE 405 - LOVELAND, COLORADO 80537  
P: 970.353.7600 • F: 970.353.7601 • www.baselinecorp.com

# WELL LOCATION PLAT LIVINGSTON S20-25-3N

NE1/4 SE1/4 SEC. 7, T1S, R68W, 6TH P.M.

WELL BORES  
CONTINUE INTO  
SECTION 8  
(SHEET 2)

NW COR. SEC. 17  
FOUND #6 REBAR  
UPGRADED W/  
3.25" A.C.  
PLS 38285

N 89°35'10" E 2640.60'

N 89°35'48" E 2640.49'

NE COR. SEC. 17  
FOUND #6 REBAR  
W/ 3.25" A.C.  
PLS 6973

N 1/4 COR. SEC. 17  
FOUND 2.375" PIPE  
W/ 3.25" A.C.  
PLS 17669

N 00°46'32" W 2626.16'

S 00°30'19" E 12254.52'

N 00°41'55" W 2635.69'

S 00°46'00" E 2636.40'(C)

W 1/4 COR.  
SEC. 17  
FOUND 2" AXLE  
W/ 3" A.C.  
PLS 13290

S 89°47'37" W 2637.14'

S 89°36'42" W 2643.63'(C)

E 1/4 COR. SEC. 17  
(CALCULATED  
BASED ON RECORDS  
OF SURVEY)

N 00°46'39" W 2643.18'

N 00°41'17" W 2635.87'

S 00°22'20" E 2636.58'(C)

SW COR. SEC. 17  
FOUND #6 REBAR  
W/ 2" A.C.  
PLS 15315

S 89°38'08" W 2632.97'

S 89°37'40" W 2629.10'

SE COR. SEC. 17  
FOUND 2.5" A.C.  
ILLEGIBLE

C 1/4 COR. SEC. 17  
FOUND 2" A.C. IN  
CONCRETE  
PLS 30100

S 1/4 COR. SEC. 17  
FOUND 2" A.C.  
PLS 30100

WELL BORES  
CONTINUE INTO  
SECTION 20  
(SHEET 4)

I HEREBY CERTIFY THAT THIS WELL LOCATION CERTIFICATE WAS PREPARED BY ME, OR UNDER MY DIRECT SUPERVISION, THAT THE FIELD WORK WAS COMPLETED ON 11/10/2017, THAT IT IS NOT A LAND SURVEY PLAT OR AN IMPROVEMENT SURVEY PLAT, AND THAT IT IS NOT TO BE RELIED UPON FOR ESTABLISHMENT OF FENCE, BUILDING, OR OTHER FUTURE IMPROVEMENT LINES.



AARON A. DEMO  
Professional Land Surveyor Registration No. 38285  
State of Colorado  
FOR AND ON BEHALF OF BASELINE ENGINEERING CORP.

N

0 1000'  
Scale 1" = 1000' ft

SURFACE LOCATION  
SEC. 7, T1S, R68W  
GROUND ELEVATION = 5329.2'  
PDOP = 1.3  
LATITUDE = 39.978560°  
LONGITUDE = -105.039094°  
2330' FSL, 1240' FEL  
ENTRY POINT LOCATION  
SEC. 8, T1S, R68W  
LATITUDE = 39.985347°  
LONGITUDE = -105.032605°  
480' FNL, 598' FWL  
BOTTOM HOLE LOCATION  
SEC. 20, T1S, R68W  
LATITUDE = 39.951716°  
LONGITUDE = -105.032450°  
2185' FNL, 552' FWL

## NOTES:

1.  INDICATES SECTION CORNER
2.  INDICATES CALCULATED CORNER
3. (C) INDICATES CALCULATED DIMENSION
4. ELEVATION BASED ON NAVD88 (GEOID12B)
5. BEARINGS DERIVED FROM COLORADO COORDINATE SYSTEM OF 1983 NORTH ZONE.
6. OPERATOR: TRAVIS WINNICKI
7. IMPROVEMENTS: SEE LOCATION DRAWING FOR ALL VISIBLE IMPROVEMENTS WITHIN 500' OF DISTURBED AREA.
8. WELL FOOTAGES ARE MEASURED AT RIGHT ANGLES TO THE SECTION LINES.

## NEAREST CULTURAL ITEMS:

BUILDING: 951' NW  
BUILDING UNIT: 1348' N  
HIGH OCCUPANCY BUILDING UNIT: 5280'+  
DESIGNATED OUTSIDE ACTIVITY AREA: 5280'+  
PUBLIC ROAD: SHERIDAN HWY 475' SE  
ABOVE GROUND UTILITY: 1282' N  
RAILROAD: 5280'+  
PROPERTY LINE: 290' N  
SURFACE USE: GRASSLAND.  
NEAREST EXISTING WELL: LIVINGSTON 43-07 687' SE

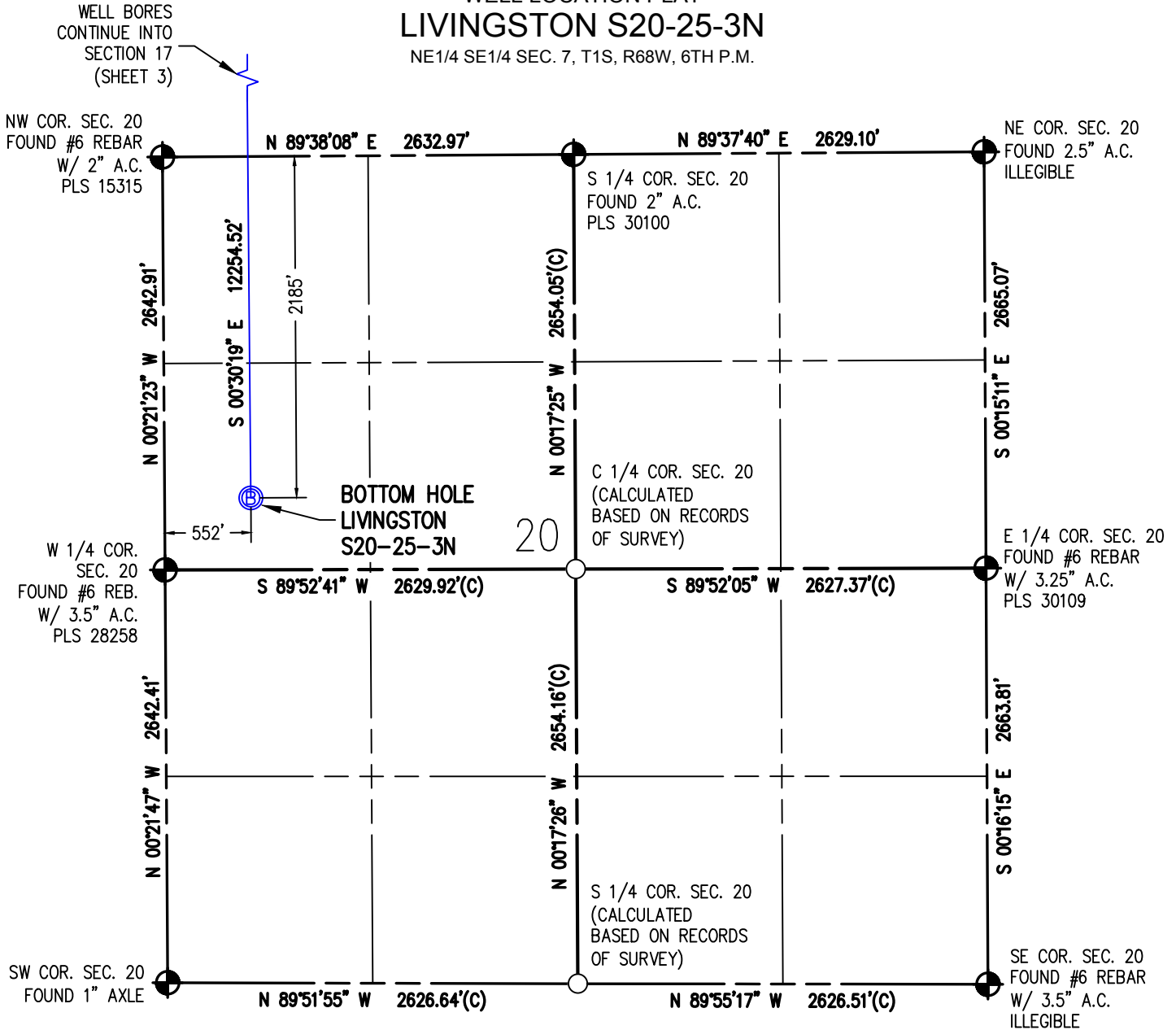


DRAWN BY	CHECKED BY
DAM	AAD
INITIAL SUBMITTAL	12/8/2017
REVISED	1/8/2018
DRAWING SIZE	8.5" X 11"
JOB NO.	EXT01S68W07-01
SHEET	3 OF 4

**BASELINE**  
Engineering - Planning - Surveying  
4007 S. LINCOLN AVENUE, SUITE 405 - LOVELAND, COLORADO 80537  
P: 970.353.7600 - F: 970.353.7601 - www.baselinecorp.com

# WELL LOCATION PLAT LIVINGSTON S20-25-3N

NE1/4 SE1/4 SEC. 7, T1S, R68W, 6TH P.M.



I HEREBY CERTIFY THAT THIS WELL LOCATION CERTIFICATE WAS PREPARED BY ME, OR UNDER MY DIRECT SUPERVISION, THAT THE FIELD WORK WAS COMPLETED ON 11/10/2017, THAT IT IS NOT A LAND SURVEY PLAT OR AN IMPROVEMENT SURVEY PLAT, AND THAT IT IS NOT TO BE RELIED UPON FOR ESTABLISHMENT OF FENCE, BUILDING OR OTHER FUTURE IMPROVEMENT LINES.

AARON A. DEMO  
Professional Land Surveyor Registration No. 38285  
State of Colorado  
FOR AND ON BEHALF OF BASELINE ENGINEERING CORP.



Scale 1" = 1000' ft

SURFACE LOCATION  
SEC. 7, T1S, R68W  
GROUND ELEVATION = 5329.2'  
PDOP = 1.3  
LATITUDE = 39.978560°  
LONGITUDE = -105.039094°  
2330' FSL, 1240' FEL  
ENTRY POINT LOCATION  
SEC. 8, T1S, R68W  
LATITUDE = 39.985347°  
LONGITUDE = -105.032605°  
480' FNL, 598' FWL  
BOTTOM HOLE LOCATION  
SEC. 20, T1S, R68W  
LATITUDE = 39.951716°  
LONGITUDE = -105.032450°  
2185' FNL, 552' FWL

## NOTES:

1. ● INDICATES SECTION CORNER
2. ○ INDICATES CALCULATED CORNER
3. (C) INDICATES CALCULATED DIMENSION
4. ELEVATION BASED ON NAVD88 (GEOID12B)
5. BEARINGS DERIVED FROM COLORADO COORDINATE SYSTEM OF 1983 NORTH ZONE.
6. OPERATOR: TRAVIS WINNICKI
7. IMPROVEMENTS: SEE LOCATION DRAWING FOR ALL VISIBLE IMPROVEMENTS WITHIN 500' OF DISTURBED AREA.
8. WELL FOOTAGES ARE MEASURED AT RIGHT ANGLES TO THE SECTION LINES.

## NEAREST CULTURAL ITEMS:

BUILDING: 951' NW  
BUILDING UNIT: 1348' N  
HIGH OCCUPANCY BUILDING UNIT: 5280'+  
DESIGNATED OUTSIDE ACTIVITY AREA: 5280'+  
PUBLIC ROAD: SHERIDAN HWY 475' SE  
ABOVE GROUND UTILITY: 1282' N  
RAILROAD: 5280'+  
PROPERTY LINE: 290' N  
SURFACE USE: GRASSLAND.  
NEAREST EXISTING WELL: LIVINGSTON 43-07 687' SE



DRAWN BY	CHECKED BY
DAM	AAD
INITIAL SUBMITTAL	12/8/2017
REVISED	1/8/2018
DRAWING SIZE	8.5" X 11"
JOB NO.	EXT01S08W07-01
SHEET	4 OF 4

**BASELINE**  
Engineering - Planning - Surveying  
4007 S. LINCOLN AVENUE, SUITE 405 • LOVELAND, COLORADO 80537  
P: 970.353.7600 • F: 970.353.7601 • www.baselinecorp.com

PLOT\_STAMP