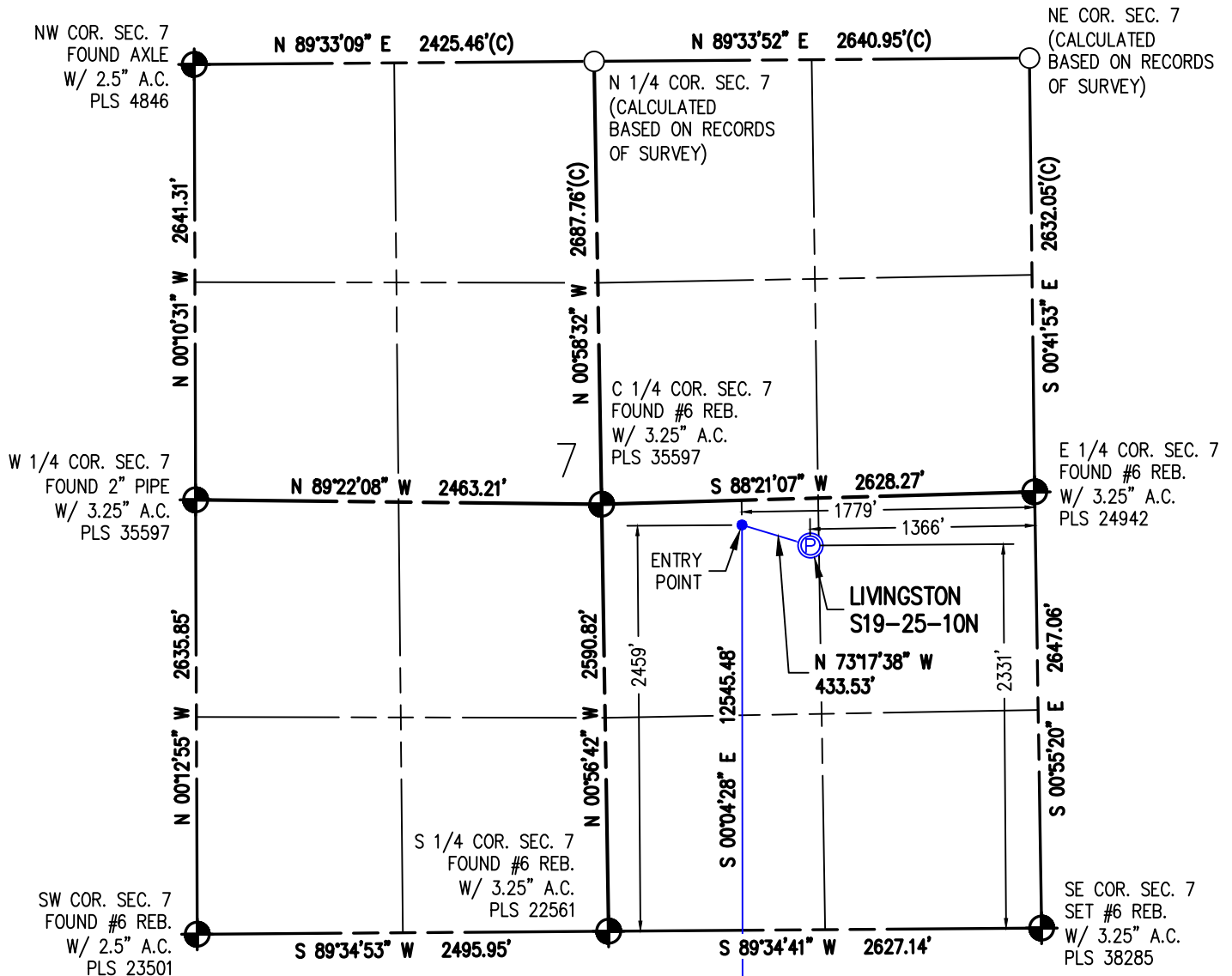


WELL LOCATION PLAT LIVINGSTON S19-25-10N

NW1/4 SE1/4 SEC. 7, T1S, R68W, 6TH P.M.



WELL BORES
CONTINUE INTO
SECTION 18
(SHEET 2)

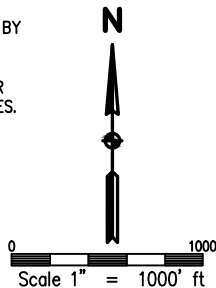
SURFACE LOCATION
SEC. 7, T1S, R68W
GROUND ELEVATION = 5322.9'
PDOP = 1.2
LATITUDE = 39.978562°
LONGITUDE = -105.039544°
2331' FSL, 1366' FEL
ENTRY POINT LOCATION
SEC. 7, T1S, R68W
LATITUDE = 39.978910°
LONGITUDE = -105.041023°
2459' FSL, 1779' FEL
BOTTOM HOLE LOCATION
SEC. 19, T1S, R68W
LATITUDE = 39.944480°
LONGITUDE = -105.041196°
460' FSL, 1904' FEL

NOTES:

1. INDICATES SECTION CORNER
2. INDICATES CALCULATED CORNER
3. (C) INDICATES CALCULATED DIMENSION
4. ELEVATION BASED ON NAVD88 (GEOID12B)
5. BEARINGS DERIVED FROM COLORADO COORDINATE SYSTEM OF 1983 NORTH ZONE.
6. OPERATOR: TRAVIS WINNICKI
7. IMPROVEMENTS: SEE LOCATION DRAWING FOR ALL VISIBLE IMPROVEMENTS WITHIN 500' OF DISTURBED AREA.
8. WELL FOOTAGES ARE MEASURED AT RIGHT ANGLES TO THE SECTION LINES.

I HEREBY CERTIFY THAT THIS WELL LOCATION CERTIFICATE WAS PREPARED BY ME, OR UNDER MY DIRECT SUPERVISION, THAT THE FIELD WORK WAS COMPLETED ON 11/10/2017, THAT IT IS NOT A LAND SURVEY PLAT OR AN IMPROVEMENT SURVEY PLAT, AND THAT IT IS NOT TO BE RELED UPON FOR ESTABLISHMENT OF FENCE, BUILDING OR OTHER FUTURE IMPROVEMENT LINES.

AARON A. DEMO
Professional Land Surveyor Registration No. 38285
State of Colorado
FOR AND ON BEHALF OF BASELINE ENGINEERING CORP.

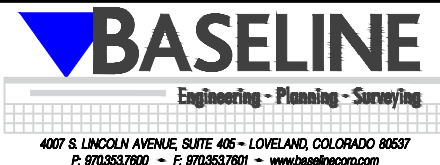


NEAREST CULTURAL ITEMS:

BUILDING: 886' NW
BUILDING UNIT: 1335' N
HIGH OCCUPANCY BUILDING UNIT: 5280'+
DESIGNATED OUTSIDE ACTIVITY AREA: 5280'+
PUBLIC ROAD: SHERIDAN HWY 575' SE
ABOVE GROUND UTILITY: 1264' N
RAILROAD: 5280'+
PROPERTY LINE: 287' N
SURFACE USE: GRASSLAND.
NEAREST EXISTING WELL: LIVINGSTON 43-07 798' SE



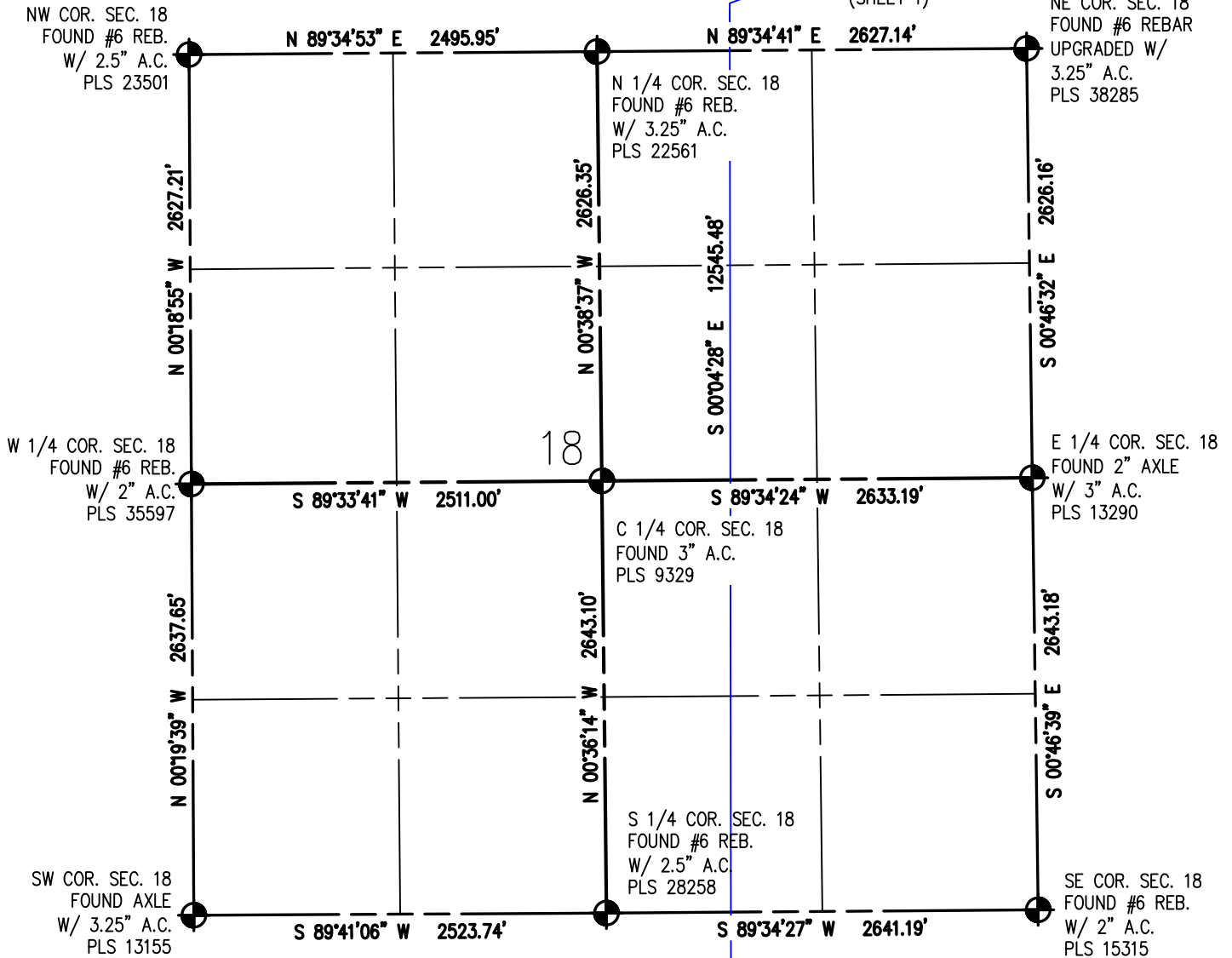
| | |
|--------------------------------|-------------------|
| DRAWN BY DAM | CHECKED BY AAD |
| INITIAL SUBMITTAL 12/8/2017 | |
| REVISED NA | |
| DRAWING SIZE 8.5" X 11" | |
| JOB NO. EXT01S68W07-01 | |
| SHEET 1 OF 3 | |



WELL LOCATION PLAT LIVINGSTON S19-25-10N

NW1/4 SE1/4 SEC. 7, T1S, R68W, 6TH P.M.

WELL BORES
CONTINUE INTO
SECTION 7
(SHEET 1)



WELL BORES
CONTINUE INTO
SECTION 19
(SHEET 3)

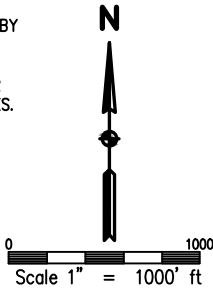
SURFACE LOCATION
SEC. 7, T1S, R68W
GROUND ELEVATION = 5322.9'
PDOP = 1.2
LATITUDE = 39.978562°
LONGITUDE = -105.039544°
2331' FSL, 1366' FEL
ENTRY POINT LOCATION
SEC. 7, T1S, R68W
LATITUDE = 39.978910°
LONGITUDE = -105.041023°
2459' FSL, 1779' FEL
BOTTOM HOLE LOCATION
SEC. 19, T1S, R68W
LATITUDE = 39.944480°
LONGITUDE = -105.041196°
460' FSL, 1904' FEL

NOTES:

- INDICATES SECTION CORNER
- INDICATES CALCULATED CORNER
- (C) INDICATES CALCULATED DIMENSION
- ELEVATION BASED ON NAVD88 (GEOID12B)
- BEARINGS DERIVED FROM COLORADO COORDINATE SYSTEM OF 1983 NORTH ZONE.
- OPERATOR: TRAVIS WINNICKI
- IMPROVEMENTS: SEE LOCATION DRAWING FOR ALL VISIBLE IMPROVEMENTS WITHIN 500' OF DISTURBED AREA.
- WELL FOOTAGES ARE MEASURED AT RIGHT ANGLES TO THE SECTION LINES.

I HEREBY CERTIFY THAT THIS WELL LOCATION CERTIFICATE WAS PREPARED BY ME, OR UNDER MY DIRECT SUPERVISION, THAT THE FIELD WORK WAS COMPLETED ON 11/10/2017, THAT IT IS NOT A LAND SURVEY PLAT OR AN IMPROVEMENT SURVEY PLAT, AND THAT IT IS NOT TO BE RELED UPON FOR ESTABLISHMENT OF FENCE, BUILDING OR OTHER FUTURE IMPROVEMENT LINES.

AARON A. DEMO
Professional Land Surveyor Registration No. 38285
State of Colorado
FOR AND ON BEHALF OF BASELINE ENGINEERING CORP.



NEAREST CULTURAL ITEMS:

BUILDING: 886' NW
BUILDING UNIT: 1335' N
HIGH OCCUPANCY BUILDING UNIT: 5280'+
DESIGNATED OUTSIDE ACTIVITY AREA: 5280'+
PUBLIC ROAD: SHERIDAN HWY 575' SE
ABOVE GROUND UTILITY: 1264' N
RAILROAD: 5280'+
PROPERTY LINE: 287' N
SURFACE USE: GRASSLAND.
NEAREST EXISTING WELL: LIVINGSTON 43-07 798' SE



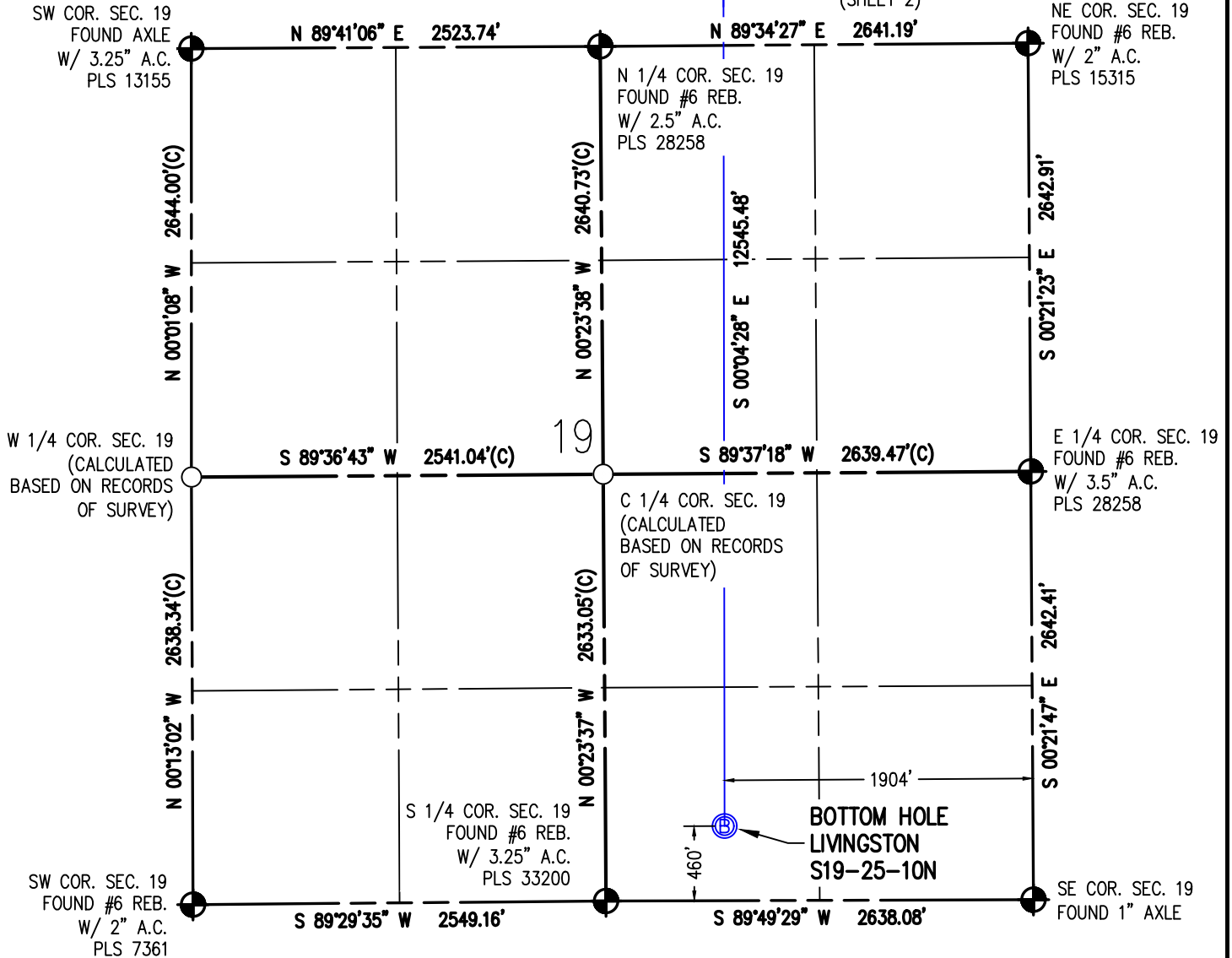
| | |
|--------------------------------|-------------------|
| DRAWN BY DAM | CHECKED BY AAD |
| INITIAL SUBMITTAL 12/8/2017 | |
| REVISED NA | |
| DRAWING SIZE 8.5" X 11" | |
| JOB NO. EXT01S68W07-01 | |
| SHEET 2 OF 3 | |

BASELINE
Engineering - Planning - Surveying
4007 S. LINCOLN AVENUE, SUITE 405 • LOVELAND, COLORADO 80537
P: 970.353.7600 • F: 970.353.7601 • www.baselineincorp.com

WELL LOCATION PLAT LIVINGSTON S19-25-10N

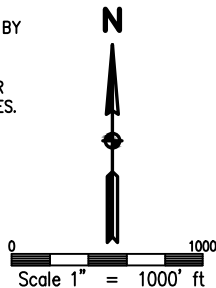
NW1/4 SE1/4 SEC. 7, T1S, R68W, 6TH P.M.

WELL BORES
CONTINUE INTO
SECTION 18
(SHEET 2)



I HEREBY CERTIFY THAT THIS WELL LOCATION CERTIFICATE WAS PREPARED BY ME, OR UNDER MY DIRECT SUPERVISION, THAT THE FIELD WORK WAS COMPLETED ON 11/10/2017, THAT IT IS NOT A LAND SURVEY PLAT OR AN IMPROVEMENT SURVEY PLAT, AND THAT IT IS NOT TO BE RELED UPON FOR ESTABLISHMENT OF FENCE, BUILDING OR OTHER FUTURE IMPROVEMENT LINES.

AARON A. DEMO
Professional Land Surveyor Registration No. 38285
State of Colorado
FOR AND ON BEHALF OF BASELINE ENGINEERING CORP.



SURFACE LOCATION
SEC. 7, T1S, R68W
GROUND ELEVATION = 5322.9'
PDOP = 1.2
LATITUDE = 39.978562°
LONGITUDE = -105.039544°
2331' FSL, 1366' FEL
ENTRY POINT LOCATION
SEC. 7, T1S, R68W
LATITUDE = 39.978910°
LONGITUDE = -105.041023°
2459' FSL, 1779' FEL
BOTTOM HOLE LOCATION
SEC. 19, T1S, R68W
LATITUDE = 39.944480°
LONGITUDE = -105.041196°
460' FSL, 1904' FEL

NOTES:

1. INDICATES SECTION CORNER
2. INDICATES CALCULATED CORNER
3. (C) INDICATES CALCULATED DIMENSION
4. ELEVATION BASED ON NAVD88 (GEOID12B)
5. BEARINGS DERIVED FROM COLORADO COORDINATE SYSTEM OF 1983 NORTH ZONE.
6. OPERATOR: TRAVIS WINNICKI
7. IMPROVEMENTS: SEE LOCATION DRAWING FOR ALL VISIBLE IMPROVEMENTS WITHIN 500' OF DISTURBED AREA.
8. WELL FOOTAGES ARE MEASURED AT RIGHT ANGLES TO THE SECTION LINES.

NEAREST CULTURAL ITEMS:

BUILDING: 886' NW
BUILDING UNIT: 1335' N
HIGH OCCUPANCY BUILDING UNIT: 5280'+
DESIGNATED OUTSIDE ACTIVITY AREA: 5280'+
PUBLIC ROAD: SHERIDAN HWY 575' SE
ABOVE GROUND UTILITY: 1264' N
RAILROAD: 5280'+
PROPERTY LINE: 287' N
SURFACE USE: GRASSLAND.
NEAREST EXISTING WELL: LIVINGSTON 43-07 798' SE



| | |
|--------------------------------|-------------------|
| DRAWN BY DAM | CHECKED BY AAD |
| INITIAL SUBMITTAL 12/8/2017 | |
| REVISED NA | |
| DRAWING SIZE 8.5" X 11" | |
| JOB NO. EXT01S68W07-01 | |
| SHEET 3 OF 3 | |

