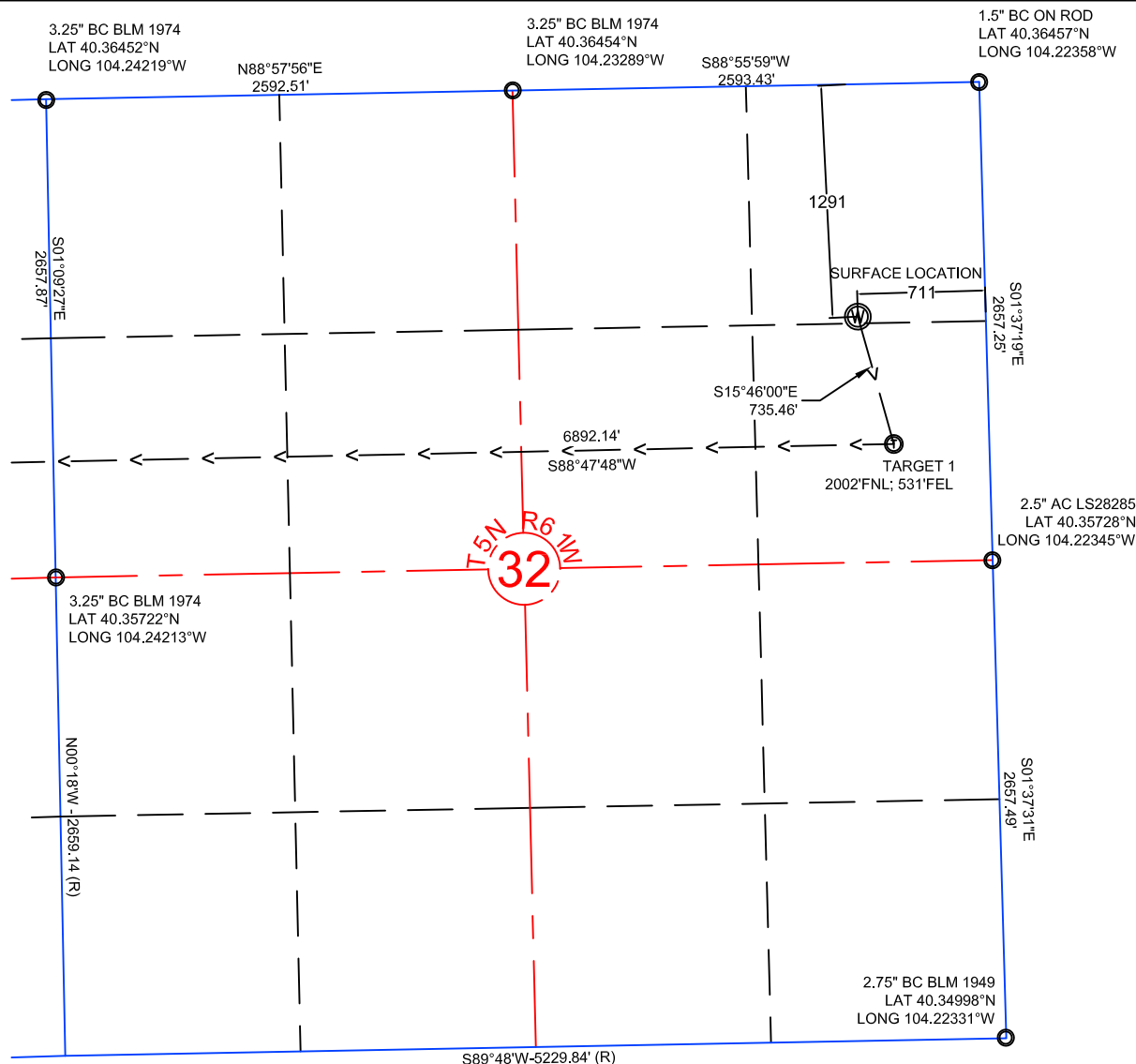


NOTE: UNDER COLORADO LAW, YOU MUST COMMENCE ANY LEGAL ACTION BASED ON ANY DEFECT IN THIS CERTIFICATE WITHIN THREE YEARS AFTER DEFECT IS DISCOVERED. IN NO EVENT MAY ANY ACTION BASED UPON ANY DEFECT IN THIS SURVEY BE COMMENCED MORE THAN TEN YEARS AFTER DATE OF THIS CERTIFICATE SHOWN HEREON. (13-80105 C.R.S.)



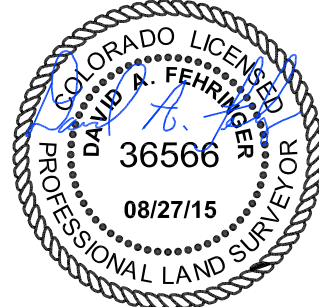
#### NOTES:

- ALL BEARINGS ARE GRID BASED UPON THE COLORADO STATE PLANE COORDINATE SYSTEM, NORTH ZONE, NAD83(2011) DERIVED FROM POST-PROCESSED STATIC GPS OBSERVATIONS.
- DISTANCES ARE ON GRID
- VERTICAL DATUM IS NAVD88 BASED UPON GPS OBSERVATIONS
- PDOP VALUE EQUALS 1.3.
- GPS OPERATOR: MIKE JOHNSON.
- UNDISTURBED GROUND ELEVATION AT WELLHEAD = 4565'
- ALL SECTION LENGTHS ARE MEASURED DISTANCES UNLESS NOTED BY (R), RECORD BEARING AND DISTANCE.
- NEAREST CULTURAL DISTANCES
  - BUILDINGS: 4330' +/-
  - BUILDING UNIT: 5280' +/-
  - HIGH OCCUPANCY BUILDING UNIT: 5280'+
  - DESIGNATED OUTSIDE ACTIVITY AREA: 5280'+
  - PUBLIC ROAD: 453'+
  - ABOVE GROUND UTILITY: 440' +/-
  - RAILROAD: 5280'+
  - PROPERTY LINE: 1482' +/-

3	STATE PLANE COORDINATES			
42-32-31MRLNB	LATITUDE	LONGITUDE	NORTHING	EASTING
SURFACE	40.36102	104.22606	1376909.91	3354996.10
TARGET 1	40.35907	104.22538	1376202.12	3355195.95
BOTTOM HOLE	40.35894	104.25012	1376057.39	3348305.33

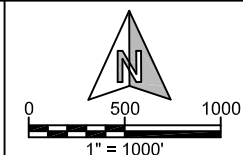
#### CERTIFICATE OF SURVEYOR:

I, DAVID A. FEHRINGER OF LANDER, WYOMING HEREBY CERTIFY THAT THIS WELL LOCATION CERTIFICATE WAS PREPARED FROM NOTES TAKEN DURING AN ACTUAL SURVEY ON AUGUST 26, 2015; AND THAT IT CORRECTLY SHOWS THE DRILLING LOCATION OF BONANZA CREEK ENERGY, INC., STATE PRONGHORN 42-32-31MRLNB AS STAKED DURING SAID SURVEY. THIS MAP DOES NOT REPRESENT A BOUNDARY SURVEY OR AN IMPROVEMENT LOCATION PLAT AND SHOULD NOT BE USED FOR THE ESTABLISHMENT OF BOUNDARY LINES.



**WILLIAM H. SMITH & ASSOCIATES, Inc.**  
155 N. 1st Street  
Lander, WY 82520  
Phone: 307-335-5646

Drawn By: MAM  
Job No.:  
Revision: 1 Moved Well 40' East on Surface



IF BAR LENGTH DOES NOT EQUAL 1" (ONE INCH), THIS PAGE WAS NOT PLOTTED TO THE INTENDED SCALE.

#### LOCATION CERTIFICATE

STATE PRONGHORN  
42-32-31MRLNB  
NE $\frac{1}{4}$  NE $\frac{1}{4}$ , SECTION 32,  
T.5N., R.61W., 6th PM  
WELD COUNTY, COLORADO



410 17th Street  
Denver, CO 80202  
(720) 440-6100

SHEET

1

OF

2

3.25" BC BLM 1974  
LAT 40.36433°N  
LONG 104.26158°W

S88°28'23"W  
5402.67'

3.25" BC BLM 1974  
LAT 40.36452°N  
LONG 104.24219°W

NOTE: UNDER COLORADO LAW, YOU  
MUST COMMENCE ANY LEGAL ACTION  
BASED ON ANY DEFECT IN THIS  
CERTIFICATE WITHIN THREE YEARS  
AFTER DEFECT IS DISCOVERED. IN NO  
EVENT MAY ANY ACTION BASED UPON  
ANY DEFECT IN THIS SURVEY BE  
COMMENCED MORE THAN TEN YEARS  
AFTER DATE OF THIS CERTIFICATE  
SHOWN HEREON. (13-80105 C.R.S.)

N00°29'W - 5342.04(R)

475'  
BOTTOM HOLE LOCATION  
1338°FNL, 2221°FEL

6886.76'  
S88°47'48"W

S01°09'27"E  
2657.87'

3.25" BC BLM 1974  
LAT 40.35722°N  
LONG 104.24213°W

N00°18'W - 2659.14 (R)

S88°06'W - 5390.88' (R)

T.5N R.61W  
31

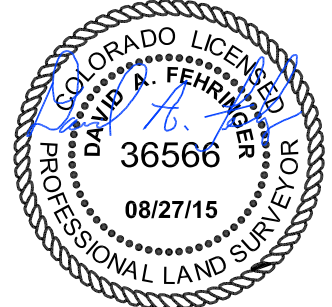
#### NOTES:

- ALL BEARINGS ARE GRID BASED UPON THE COLORADO STATE PLANE COORDINATE SYSTEM, NORTH ZONE, NAD83(2011) DERIVED FROM POST-PROCESSED STATIC GPS OBSERVATIONS.
- DISTANCES ARE ON GRID
- VERTICAL DATUM IS NAVD88 BASED UPON GPS OBSERVATIONS
- PDOP VALUE EQUALS 1.3.
- GPS OPERATOR: MIKE JOHNSON.
- UNDISTURBED GROUND ELEVATION AT WELLHEAD = 4565'
- ALL SECTION LENGTHS ARE MEASURED DISTANCES UNLESS NOTED BY (R), RECORD BEARING AND DISTANCE.
- NEAREST CULTURAL DISTANCES  
BUILDINGS: 4312' +/-  
BUILDING UNIT: 5280' +/-  
HIGH OCCUPANCY BUILDING UNIT: 5280'+  
DESIGNATED OUTSIDE ACTIVITY AREA: 5280'+  
PUBLIC ROAD: 453'+  
ABOVE GROUND UTILITY: 440' +/-  
RAILROAD: 5280'+  
PROPERTY LINE: 1464' +/-

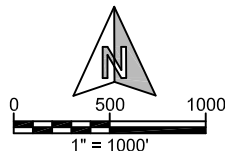
2	STATE PLANE COORDINATES			
V-32-31MRLNB	LATITUDE	LONGITUDE	NORTHING	EASTING
SURFACE	40.36107	104.22606	1376929.81	3354998.05
TARGET 1	40.36089	104.22542	1376865.89	3355177.15
BOTTOM HOLE	40.36076	104.25013	1376721.27	3348291.92

#### CERTIFICATE OF SURVEYOR:

I, DAVID A. FEHRINGER OF LANDER, WYOMING HEREBY CERTIFY THAT THIS WELL LOCATION CERTIFICATE WAS PREPARED FROM NOTES TAKEN DURING AN ACTUAL SURVEY ON AUGUST 26, 2015; AND THAT IT CORRECTLY SHOWS THE DRILLING LOCATION OF BONANZA CREEK ENERGY, INC., STATE PRONGHORN V-32-31MRLNB AS STAKED DURING SAID SURVEY. THIS MAP DOES NOT REPRESENT A BOUNDARY SURVEY OR AN IMPROVEMENT LOCATION PLAT AND SHOULD NOT BE USED FOR THE ESTABLISHMENT OF BOUNDARY LINES.



**WILLIAM H. SMITH &  
ASSOCIATES, Inc.**  
155 N. 1st Street  
Lander, WY 82520  
Phone: 307-335-5646



Drawn By: MAM  
Job No.:  
Revision: 1 MOVED WELL 40' EAST ON SURFACE

Checked By: DAF  
Date: 10/28/15  
IF BAR LENGTH DOES NOT EQUAL  
1"(ONE INCH), THIS PAGE WAS NOT  
PLOTTED TO THE INTENDED SCALE.

#### LOCATION CERTIFICATE

STATE PRONGHORN  
V-32-31MRLNB  
BOTTOM HOLE  
NE¼ NE¼, SECTION 32,  
T.5N., R.61W., 6th PM  
WELD COUNTY, COLORADO



410 17th Street  
Denver, CO 80202  
(720) 440-6100

SHEET

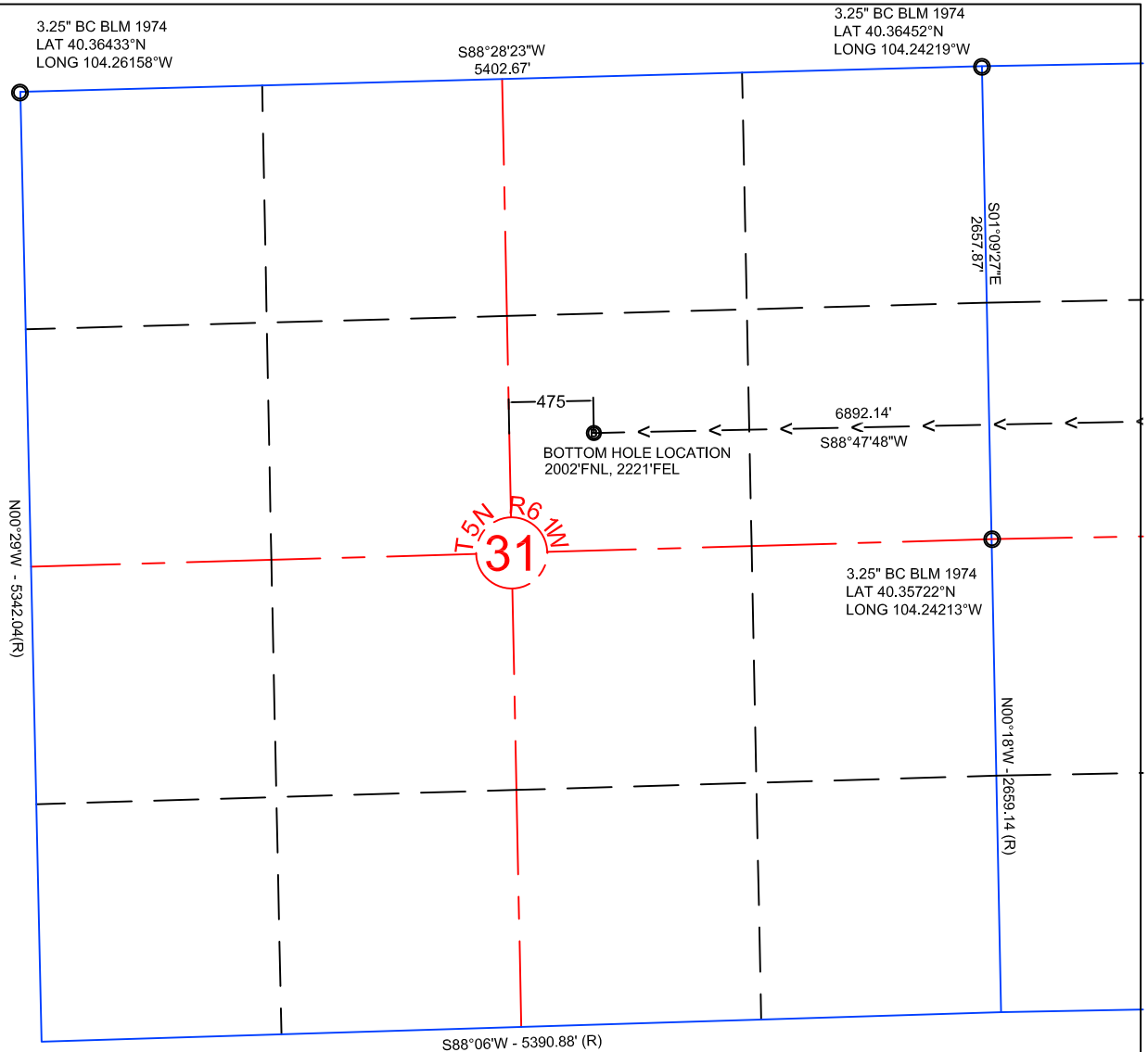
2

OF

2

Z:\Projects\1319-01\_BONANZA\5N-61W\DWG\STATE PRONGHORN V-32\STATE-PRONGHORN\_V-32\_CERTS.dwg SAVED DATE 2015-10-29 08:36

NOTE: UNDER COLORADO LAW, YOU MUST COMMENCE ANY LEGAL ACTION BASED ON ANY DEFECT IN THIS CERTIFICATE WITHIN THREE YEARS AFTER DEFECT IS DISCOVERED. IN NO EVENT MAY ANY ACTION BASED UPON ANY DEFECT IN THIS SURVEY BE COMMENCED MORE THAN TEN YEARS AFTER DATE OF THIS CERTIFICATE SHOWN HEREON. (13-80105 C.R.S.)



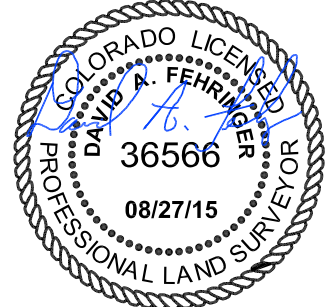
NOTES:

- ALL BEARINGS ARE GRID BASED UPON THE COLORADO STATE PLANE COORDINATE SYSTEM, NORTH ZONE, NAD83(2011) DERIVED FROM POST-PROCESSED STATIC GPS OBSERVATIONS.
- DISTANCES ARE ON GRID
- VERTICAL DATUM IS NAVD88 BASED UPON GPS OBSERVATIONS
- PDOP VALUE EQUALS 1.3.
- GPS OPERATOR: MIKE JOHNSON.
- UNDISTURBED GROUND ELEVATION AT WELLHEAD = 4565'
- ALL SECTION LENGTHS ARE MEASURED DISTANCES UNLESS NOTED BY (R), RECORD BEARING AND DISTANCE.
- NEAREST CULTURAL DISTANCES
  - BUILDINGS: 4330' +/-
  - BUILDING UNIT: 5280' +/-
  - HIGH OCCUPANCY BUILDING UNIT: 5280'+
  - DESIGNATED OUTSIDE ACTIVITY AREA: 5280'+
  - PUBLIC ROAD: 453'+
  - ABOVE GROUND UTILITY: 440' +/-
  - RAILROAD: 5280'+
  - PROPERTY LINE: 1482' +/-

3	STATE PLANE COORDINATES			
42-32-31MRLNB	LATITUDE	LONGITUDE	NORTHING	EASTING
SURFACE	40.36102	104.22606	1376909.91	3354996.10
TARGET 1	40.35907	104.22538	1376202.12	3355195.95
BOTTOM HOLE	40.35894	104.25012	1376057.39	3348305.33

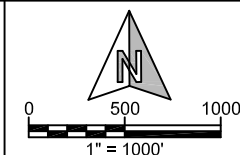
CERTIFICATE OF SURVEYOR:

I, DAVID A. FEHRINGER OF LANDER, WYOMING HEREBY CERTIFY THAT THIS WELL LOCATION CERTIFICATE WAS PREPARED FROM NOTES TAKEN DURING AN ACTUAL SURVEY ON AUGUST 26, 2015; AND THAT IT CORRECTLY SHOWS THE DRILLING LOCATION OF BONANZA CREEK ENERGY, INC., STATE PRONGHORN 42-32-31MRLNB AS STAKED DURING SAID SURVEY. THIS MAP DOES NOT REPRESENT A BOUNDARY SURVEY OR AN IMPROVEMENT LOCATION PLAT AND SHOULD NOT BE USED FOR THE ESTABLISHMENT OF BOUNDARY LINES.



**WILLIAM H. SMITH & ASSOCIATES, Inc.**  
155 N. 1st Street  
Lander, WY 82520  
Phone: 307-335-5646

Drawn By: MAM  
Job No.:  
Revision: 1 MOVED WELL 40' EAST ON SURFACE



IF BAR LENGTH DOES NOT EQUAL 1"(ONE INCH), THIS PAGE WAS NOT PLOTTED TO THE INTENDED SCALE.

LOCATION CERTIFICATE

STATE PRONGHORN  
42-32-31MRLNB  
BOTTOM HOLE  
NE¼ NE¼, SECTION 32,  
T.5N., R.61W., 6th PM  
WELD COUNTY, COLORADO



410 17th Street  
Denver, CO 80202  
(720) 440-6100

SHEET

2

OF

2