

PDC Energy Inc. DJ Basin

Well Name: **McGlothlin Farms 4X-234**

Surface Location: McGlothlin Farms 5N64W4DX Pad Sec.4-T5N-R64W
North American Datum 1983 , US State Plane 1983, Colorado Northern Zone

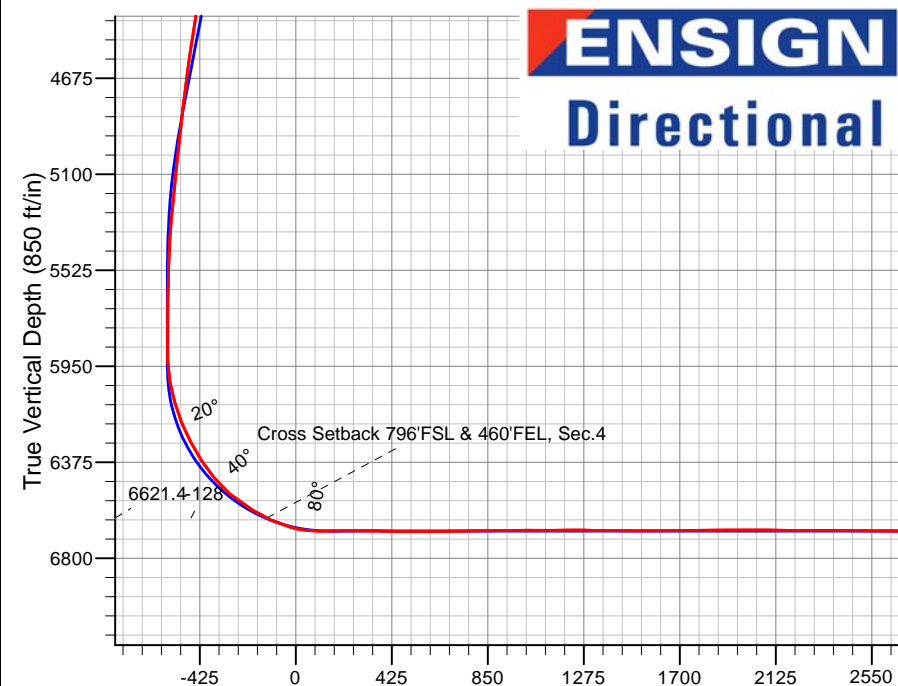
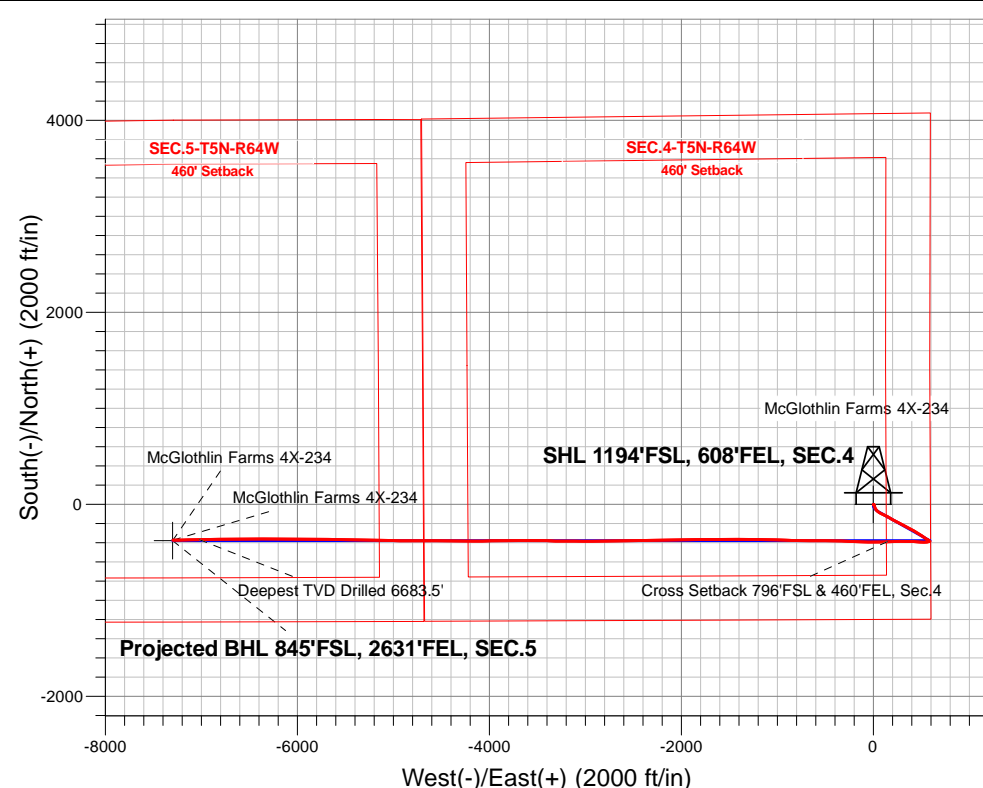
Ground Elevation: 4616.0

+N/-S+E/-W Northing Easting Latitude Longitude Slot
0.0 0.0 1398825.223265063.00 40.424271 -104.547924

Ensign Rig #161 - RKB - 23'WELL @ 4639.0ft (Ensign Rig #161 - RKB - 23')

FINAL SURVEY

Projected Bottom Hole Location
14,315'MD 6678'TVD 373'S & 7298'W of SHL
92.0 degree Incl @ 268.8 degree AZM



McGlothlin Farms 5N64W4DX Pad Sec.4-T5N-R64W
McGlothlin Farms 4X-234
McGlothlin Farms 4X-234 Wellbore #1
9:42, September 06 2017

ANNOTATIONS

TVD	MD	Annotation
6621.4	6858.0	Cross Setback 796'FSL & 460'FEL, Sec.4
6683.5	14035.9	Deepest TVD Drilled 6683.5'

LEGEND

- ▲ McGlothlin Farms 4X-234, McGlothlin Farms 4X-234 Wellbore #1, Plan #1 (8-30-17) V0
- Survey #1
- McGlothlin Farms 4X-234 Wellbore #1

Vertical Section at 267.08° (850 ft/in)

Projected BHL 845'FSL, 2631'FEL, SEC.5

McGlothlin Farms 4X-234
Deepest TVD Drilled 6683.5'
McGlothlin Farms 4X-234



PDC Energy Inc. DJ Basin

SEC.4-T5N-R64W

McGlothlin Farms 5N64W4DX Pad Sec.4-T5N-R64W

McGlothlin Farms 4X-234

McGlothlin Farms 4X-234 Wellbore #1

Survey: Survey #1

Standard Survey Report

06 September, 2017

Company:	PDC Energy Inc. DJ Basin	Local Co-ordinate Reference:	Well McGlothlin Farms 4X-234
Project:	SEC.4-T5N-R64W	TVD Reference:	WELL @ 4639.0ft (Ensign Rig #161 - RKB - 23')
Site:	McGlothlin Farms 5N64W4DX Pad Sec.4-T5N-R64W	MD Reference:	WELL @ 4639.0ft (Ensign Rig #161 - RKB - 23')
Well:	McGlothlin Farms 4X-234	North Reference:	True
Wellbore:	McGlothlin Farms 4X-234 Wellbore #1	Survey Calculation Method:	Minimum Curvature
Design:	McGlothlin Farms 4X-234 Wellbore #1	Database:	US_EDM

Project	SEC.4-T5N-R64W, Weld County, Colorado		
Map System:	US State Plane 1983	System Datum:	Mean Sea Level
Geo Datum:	North American Datum 1983		Using Well Reference Point
Map Zone:	Colorado Northern Zone		Using geodetic scale factor

Site	McGlothlin Farms 5N64W4DX Pad Sec.4-T5N-R64W				
Site Position:		Northing:	1,398,838.61 usft	Latitude:	40.424309
From:	Lat/Long	Easting:	3,265,019.98 usft	Longitude:	-104.548078
Position Uncertainty:	0.0 ft	Slot Radius:	13-3/16 "	Grid Convergence:	0.62 °

Well	McGlothlin Farms 4X-234					
Well Position	+N/-S	0.0 ft	Northing:	1,398,825.22 usft	Latitude:	40.424271
	+E/-W	0.0 ft	Easting:	3,265,063.00 usft	Longitude:	-104.547924
Position Uncertainty		0.0 ft	Wellhead Elevation:	0.0 ft	Ground Level:	4,616.0 ft

Wellbore	McGlothlin Farms 4X-234 Wellbore #1				
Magnetics	Model Name	Sample Date	Declination (°)	Dip Angle (°)	Field Strength (nT)
	IGRF2010	8/30/2017	7.91	66.89	52,514

Design	McGlothlin Farms 4X-234 Wellbore #1				
Audit Notes:					
Version:	1.0	Phase:	ACTUAL	Tie On Depth:	0.0
Vertical Section:	Depth From (TVD) (ft)	+N/-S (ft)	+E/-W (ft)	Direction (°)	
	0.0	0.0	0.0	267.08	

Survey Program	Date	9/6/2017			
From (ft)	To (ft)	Survey (Wellbore)	Tool Name	Description	
156.0	14,315.0	Survey #1 (McGlothlin Farms 4X-234 Well	MWD	MWD - Standard	

Survey										
Measured Depth (ft)	Inclination (°)	Azimuth (°)	Vertical Depth (ft)	+N/-S (ft)	+E/-W (ft)	Vertical Section (ft)	Dogleg Rate (°/100usft)	Build Rate (°/100usft)	Turn Rate (°/100usft)	
0.0	0.00	0.00	0.0	0.0	0.0	0.0	0.00	0.00	0.00	
156.0	0.40	151.90	156.0	-0.5	0.3	-0.2	0.26	0.26	0.00	
252.0	0.40	133.60	252.0	-1.0	0.7	-0.6	0.13	0.00	-19.06	
347.0	0.20	144.50	347.0	-1.4	1.0	-0.9	0.22	-0.21	11.47	
443.0	0.40	175.80	443.0	-1.8	1.1	-1.0	0.26	0.21	32.60	
539.0	0.40	123.70	539.0	-2.4	1.4	-1.3	0.37	0.00	-54.27	
634.0	0.20	120.40	634.0	-2.6	1.8	-1.7	0.21	-0.21	-3.47	
730.0	0.40	138.70	730.0	-3.0	2.2	-2.0	0.23	0.21	19.06	
825.0	0.40	150.30	825.0	-3.5	2.6	-2.4	0.09	0.00	12.21	
921.0	0.40	129.40	921.0	-4.0	3.0	-2.8	0.15	0.00	-21.77	

Company:	PDC Energy Inc. DJ Basin	Local Co-ordinate Reference:	Well McGlothlin Farms 4X-234
Project:	SEC.4-T5N-R64W	TVD Reference:	WELL @ 4639.0ft (Ensign Rig #161 - RKB - 23')
Site:	McGlothlin Farms 5N64W4DX Pad Sec.4-T5N-R64W	MD Reference:	WELL @ 4639.0ft (Ensign Rig #161 - RKB - 23')
Well:	McGlothlin Farms 4X-234	North Reference:	True
Wellbore:	McGlothlin Farms 4X-234 Wellbore #1	Survey Calculation Method:	Minimum Curvature
Design:	McGlothlin Farms 4X-234 Wellbore #1	Database:	US_EDM

Survey									
Measured Depth (ft)	Inclination (°)	Azimuth (°)	Vertical Depth (ft)	+N/-S (ft)	+E/-W (ft)	Vertical Section (ft)	Dogleg Rate (°/100usft)	Build Rate (°/100usft)	Turn Rate (°/100usft)
1,016.0	0.70	99.00	1,016.0	-4.3	3.8	-3.6	0.43	0.32	-32.00
1,112.0	0.80	112.50	1,112.0	-4.7	5.0	-4.8	0.21	0.10	14.06
1,208.0	1.20	102.50	1,208.0	-5.1	6.6	-6.4	0.45	0.42	-10.42
1,304.0	0.60	106.30	1,303.9	-5.5	8.1	-7.8	0.63	-0.63	3.96
1,400.0	0.40	241.00	1,399.9	-5.8	8.3	-8.0	0.96	-0.21	140.31
1,495.0	0.60	190.50	1,494.9	-6.4	7.9	-7.6	0.49	0.21	-53.16
1,591.0	1.50	176.50	1,590.9	-8.2	7.9	-7.5	0.97	0.94	-14.58
1,620.0	1.20	178.40	1,619.9	-8.9	7.9	-7.5	1.05	-1.03	6.55
1,683.0	2.40	164.20	1,682.9	-10.8	8.3	-7.7	2.02	1.90	-22.54
1,779.0	4.90	166.50	1,778.7	-16.7	9.8	-8.9	2.61	2.60	2.40
1,874.0	6.10	157.10	1,873.2	-25.3	12.7	-11.4	1.58	1.26	-9.89
1,969.0	5.90	158.70	1,967.7	-34.5	16.5	-14.7	0.27	-0.21	1.68
2,065.0	6.90	149.90	2,063.1	-44.1	21.1	-18.9	1.46	1.04	-9.17
2,160.0	8.00	146.40	2,157.3	-54.5	27.7	-24.8	1.25	1.16	-3.68
2,256.0	8.30	136.60	2,252.4	-65.1	36.1	-32.8	1.48	0.31	-10.21
2,352.0	9.70	129.90	2,347.2	-75.4	47.1	-43.2	1.82	1.46	-6.98
2,447.0	10.40	119.90	2,440.7	-84.8	60.7	-56.3	1.98	0.74	-10.53
2,543.0	11.00	116.40	2,535.1	-93.2	76.4	-71.5	0.92	0.63	-3.65
2,638.0	12.40	115.50	2,628.1	-101.6	93.7	-88.4	1.49	1.47	-0.95
2,733.0	14.20	116.70	2,720.5	-111.2	113.3	-107.5	1.92	1.89	1.26
2,829.0	14.00	116.00	2,813.6	-121.6	134.3	-127.9	0.27	-0.21	-0.73
2,925.0	14.20	121.30	2,906.7	-132.8	154.8	-147.8	1.36	0.21	5.52
3,020.0	13.80	120.90	2,998.9	-144.7	174.5	-166.9	0.43	-0.42	-0.42
3,116.0	13.00	119.50	3,092.3	-155.9	193.7	-185.5	0.90	-0.83	-1.46
3,212.0	13.70	117.90	3,185.7	-166.5	213.1	-204.4	0.82	0.73	-1.67
3,308.0	12.70	118.10	3,279.2	-176.8	232.5	-223.2	1.04	-1.04	0.21
3,404.0	13.00	118.50	3,372.8	-186.9	251.3	-241.4	0.33	0.31	0.42
3,499.0	13.50	117.80	3,465.2	-197.2	270.5	-260.1	0.55	0.53	-0.74
3,595.0	13.80	117.20	3,558.5	-207.7	290.6	-279.6	0.35	0.31	-0.63
3,691.0	13.60	117.10	3,651.8	-218.0	310.8	-299.3	0.21	-0.21	-0.10
3,786.0	13.50	115.80	3,744.2	-227.9	330.7	-318.7	0.34	-0.11	-1.37
3,883.0	13.50	114.40	3,838.5	-237.6	351.2	-338.7	0.34	0.00	-1.44
3,978.0	13.20	117.10	3,930.9	-247.1	371.0	-357.9	0.73	-0.32	2.84
4,074.0	13.00	117.60	4,024.4	-257.1	390.3	-376.7	0.24	-0.21	0.52
4,170.0	12.20	117.90	4,118.1	-266.8	408.8	-394.7	0.84	-0.83	0.31
4,265.0	12.10	124.30	4,211.0	-277.1	425.9	-411.3	1.42	-0.11	6.74
4,361.0	11.90	124.50	4,304.9	-288.4	442.4	-427.1	0.21	-0.21	0.21
4,457.0	11.60	125.30	4,398.9	-299.6	458.4	-442.6	0.36	-0.31	0.83
4,553.0	10.90	123.90	4,493.0	-310.2	473.9	-457.4	0.78	-0.73	-1.46
4,648.0	9.80	123.90	4,586.5	-319.7	488.0	-471.1	1.16	-1.16	0.00
4,744.0	9.00	121.80	4,681.2	-328.3	501.2	-483.8	0.91	-0.83	-2.19
4,840.0	8.30	121.80	4,776.1	-335.9	513.5	-495.7	0.73	-0.73	0.00

Company:	PDC Energy Inc. DJ Basin	Local Co-ordinate Reference:	Well McGlothlin Farms 4X-234
Project:	SEC.4-T5N-R64W	TVD Reference:	WELL @ 4639.0ft (Ensign Rig #161 - RKB - 23')
Site:	McGlothlin Farms 5N64W4DX Pad Sec.4-T5N-R64W	MD Reference:	WELL @ 4639.0ft (Ensign Rig #161 - RKB - 23')
Well:	McGlothlin Farms 4X-234	North Reference:	True
Wellbore:	McGlothlin Farms 4X-234 Wellbore #1	Survey Calculation Method:	Minimum Curvature
Design:	McGlothlin Farms 4X-234 Wellbore #1	Database:	US_EDM

Survey									
Measured Depth (ft)	Inclination (°)	Azimuth (°)	Vertical Depth (ft)	+N/-S (ft)	+E/-W (ft)	Vertical Section (ft)	Dogleg Rate (°/100usft)	Build Rate (°/100usft)	Turn Rate (°/100usft)
4,936.0	8.00	120.90	4,871.1	-343.0	525.1	-506.9	0.34	-0.31	-0.94
5,032.0	7.50	123.90	4,966.2	-349.9	536.0	-517.5	0.67	-0.52	3.13
5,128.0	7.40	123.00	5,061.4	-356.7	546.4	-527.5	0.16	-0.10	-0.94
5,223.0	7.00	122.80	5,155.7	-363.2	556.4	-537.2	0.42	-0.42	-0.21
5,319.0	6.90	122.20	5,251.0	-369.4	566.2	-546.6	0.13	-0.10	-0.63
5,415.0	4.30	124.30	5,346.5	-374.5	574.0	-554.2	2.72	-2.71	2.19
5,511.0	4.40	122.20	5,442.2	-378.5	580.1	-560.1	0.20	0.10	-2.19
5,607.0	1.90	133.40	5,538.1	-381.6	584.4	-564.2	2.67	-2.60	11.67
5,702.0	0.90	138.00	5,633.1	-383.2	586.1	-565.8	1.06	-1.05	4.84
5,798.0	0.80	108.80	5,729.0	-384.0	587.2	-566.8	0.46	-0.10	-30.42
5,894.0	0.70	160.50	5,825.0	-384.8	588.0	-567.6	0.69	-0.10	53.85
5,990.0	0.80	196.50	5,921.0	-386.0	588.0	-567.6	0.49	0.10	37.50
6,086.0	11.30	254.70	6,016.4	-389.1	578.7	-558.1	11.35	10.94	60.63
6,181.0	15.40	264.00	6,108.8	-392.9	557.2	-536.4	4.86	4.32	9.79
6,277.0	22.40	271.40	6,199.6	-393.8	526.2	-505.4	7.69	7.29	7.71
6,373.0	28.20	271.80	6,286.3	-392.6	485.2	-464.6	6.04	6.04	0.42
6,468.0	32.60	275.10	6,368.3	-389.6	437.3	-416.8	4.95	4.63	3.47
6,564.0	40.00	273.20	6,445.6	-385.6	380.6	-360.5	7.80	7.71	-1.98
6,660.0	48.50	268.90	6,514.3	-384.6	313.7	-293.7	9.39	8.85	-4.48
6,784.0	60.30	268.20	6,586.4	-387.2	213.1	-193.1	9.53	9.52	-0.56
6,858.0	63.10	268.36	6,621.4	-389.1	148.0	-128.0	3.79	3.79	0.21
Cross Setback 796'FSL & 460'FEL, Sec.4									
6,879.0	63.90	268.40	6,630.8	-389.6	129.2	-109.2	3.79	3.79	0.21
6,975.0	75.40	269.10	6,664.1	-391.6	39.4	-19.3	12.00	11.98	0.73
7,071.0	86.80	270.00	6,679.0	-392.3	-55.3	75.2	11.91	11.88	0.94
7,167.0	92.90	272.60	6,679.2	-390.1	-151.2	170.9	6.91	6.35	2.71
7,263.0	88.50	272.60	6,678.0	-385.8	-247.1	266.5	4.58	-4.58	0.00
7,358.0	89.60	272.30	6,679.6	-381.7	-342.0	361.0	1.20	1.16	-0.32
7,454.0	89.70	270.90	6,680.2	-379.0	-438.0	456.7	1.46	0.10	-1.46
7,549.0	89.70	269.10	6,680.7	-379.0	-533.0	551.6	1.89	0.00	-1.89
7,645.0	89.60	270.20	6,681.3	-379.6	-629.0	647.5	1.15	-0.10	1.15
7,741.0	91.50	271.80	6,680.4	-378.0	-724.9	743.3	2.59	1.98	1.67
7,837.0	91.60	271.40	6,677.8	-375.3	-820.9	838.9	0.43	0.10	-0.42
7,933.0	89.90	271.60	6,676.5	-372.8	-916.8	934.6	1.78	-1.77	0.21
8,029.0	89.90	271.20	6,676.7	-370.4	-1,012.8	1,030.4	0.42	0.00	-0.42
8,124.0	90.10	271.10	6,676.7	-368.5	-1,107.8	1,125.1	0.24	0.21	-0.11
8,220.0	90.40	270.70	6,676.3	-367.0	-1,203.8	1,220.9	0.52	0.31	-0.42
8,315.0	89.20	270.50	6,676.6	-366.0	-1,298.7	1,315.7	1.28	-1.26	-0.21
8,411.0	89.40	271.10	6,677.8	-364.7	-1,394.7	1,411.5	0.66	0.21	0.63
8,506.0	90.00	270.00	6,678.3	-363.8	-1,489.7	1,506.3	1.32	0.63	-1.16
8,602.0	90.30	269.80	6,678.0	-363.9	-1,585.7	1,602.2	0.38	0.31	-0.21
8,698.0	90.50	269.30	6,677.3	-364.7	-1,681.7	1,698.1	0.56	0.21	-0.52
8,793.0	90.50	268.60	6,676.5	-366.4	-1,776.7	1,793.1	0.74	0.00	-0.74

Company:	PDC Energy Inc. DJ Basin	Local Co-ordinate Reference:	Well McGlothlin Farms 4X-234
Project:	SEC.4-T5N-R64W	TVD Reference:	WELL @ 4639.0ft (Ensign Rig #161 - RKB - 23')
Site:	McGlothlin Farms 5N64W4DX Pad Sec.4-T5N-R64W	MD Reference:	WELL @ 4639.0ft (Ensign Rig #161 - RKB - 23')
Well:	McGlothlin Farms 4X-234	North Reference:	True
Wellbore:	McGlothlin Farms 4X-234 Wellbore #1	Survey Calculation Method:	Minimum Curvature
Design:	McGlothlin Farms 4X-234 Wellbore #1	Database:	US_EDM

Survey									
Measured Depth (ft)	Inclination (°)	Azimuth (°)	Vertical Depth (ft)	+N/-S (ft)	+E/-W (ft)	Vertical Section (ft)	Dogleg Rate (°/100usft)	Build Rate (°/100usft)	Turn Rate (°/100usft)
8,889.0	90.40	269.50	6,675.8	-368.0	-1,872.7	1,889.0	0.94	-0.10	0.94
8,985.0	90.10	269.30	6,675.3	-369.0	-1,968.7	1,984.9	0.38	-0.31	-0.21
9,081.0	89.30	269.10	6,675.8	-370.4	-2,064.7	2,080.9	0.86	-0.83	-0.21
9,177.0	89.80	268.80	6,676.6	-372.1	-2,160.6	2,176.8	0.61	0.52	-0.31
9,272.0	90.20	268.40	6,676.6	-374.4	-2,255.6	2,271.8	0.60	0.42	-0.42
9,368.0	89.40	269.30	6,676.9	-376.4	-2,351.6	2,367.7	1.25	-0.83	0.94
9,464.0	89.80	268.80	6,677.6	-378.0	-2,447.6	2,463.7	0.67	0.42	-0.52
9,560.0	89.40	270.00	6,678.3	-379.0	-2,543.6	2,559.6	1.32	-0.42	1.25
9,656.0	89.20	269.50	6,679.4	-379.4	-2,639.6	2,655.5	0.56	-0.21	-0.52
9,752.0	89.20	268.80	6,680.8	-380.8	-2,735.5	2,751.4	0.73	0.00	-0.73
9,848.0	90.40	269.60	6,681.1	-382.1	-2,831.5	2,847.3	1.50	1.25	0.83
9,943.0	90.40	268.90	6,680.5	-383.4	-2,926.5	2,942.3	0.74	0.00	-0.74
10,039.0	90.50	270.70	6,679.7	-383.7	-3,022.5	3,038.1	1.88	0.10	1.88
10,134.0	90.80	270.40	6,678.6	-382.8	-3,117.5	3,133.0	0.45	0.32	-0.32
10,230.0	90.80	269.80	6,677.3	-382.6	-3,213.5	3,228.8	0.62	0.00	-0.63
10,325.0	90.10	271.80	6,676.5	-381.3	-3,308.5	3,323.6	2.23	-0.74	2.11
10,421.0	90.10	271.20	6,676.4	-378.8	-3,404.4	3,419.3	0.63	0.00	-0.63
10,517.0	90.10	270.40	6,676.2	-377.5	-3,500.4	3,515.1	0.83	0.00	-0.83
10,612.0	90.00	270.00	6,676.1	-377.1	-3,595.4	3,610.0	0.43	-0.11	-0.42
10,707.0	89.40	269.60	6,676.6	-377.5	-3,690.4	3,704.9	0.76	-0.63	-0.42
10,803.0	88.70	268.90	6,678.2	-378.7	-3,786.4	3,800.8	1.03	-0.73	-0.73
10,899.0	89.80	270.00	6,679.5	-379.6	-3,882.4	3,896.7	1.62	1.15	1.15
10,995.0	89.90	269.30	6,679.7	-380.2	-3,978.4	3,992.6	0.74	0.10	-0.73
11,090.0	90.00	268.80	6,679.8	-381.8	-4,073.4	4,087.5	0.54	0.11	-0.53
11,186.0	89.30	270.50	6,680.4	-382.4	-4,169.4	4,183.4	1.92	-0.73	1.77
11,282.0	89.00	270.20	6,681.8	-381.8	-4,265.3	4,279.3	0.44	-0.31	-0.31
11,378.0	89.60	270.70	6,683.0	-381.1	-4,361.3	4,375.1	0.81	0.63	0.52
11,474.0	90.00	270.50	6,683.3	-380.0	-4,457.3	4,470.9	0.47	0.42	-0.21
11,569.0	90.40	269.60	6,683.0	-380.0	-4,552.3	4,565.8	1.04	0.42	-0.95
11,665.0	90.00	269.30	6,682.7	-380.9	-4,648.3	4,661.7	0.52	-0.42	-0.31
11,761.0	91.10	270.70	6,681.7	-380.9	-4,744.3	4,757.6	1.85	1.15	1.46
11,857.0	91.50	270.20	6,679.6	-380.1	-4,840.3	4,853.4	0.67	0.42	-0.52
11,952.0	90.70	270.90	6,677.7	-379.2	-4,935.3	4,948.2	1.12	-0.84	0.74
12,048.0	90.00	271.90	6,677.1	-376.9	-5,031.2	5,043.9	1.27	-0.73	1.04
12,144.0	90.40	271.40	6,676.8	-374.1	-5,127.2	5,139.6	0.67	0.42	-0.52
12,239.0	89.50	271.10	6,676.9	-372.0	-5,222.2	5,234.3	1.00	-0.95	-0.32
12,335.0	90.10	270.50	6,677.2	-370.7	-5,318.1	5,330.1	0.88	0.63	-0.63
12,431.0	91.00	270.20	6,676.3	-370.1	-5,414.1	5,426.0	0.99	0.94	-0.31
12,526.0	90.10	270.70	6,675.4	-369.4	-5,509.1	5,520.8	1.08	-0.95	0.53
12,622.0	89.30	270.90	6,675.9	-368.0	-5,605.1	5,616.6	0.86	-0.83	0.21
12,718.0	90.40	271.20	6,676.1	-366.3	-5,701.1	5,712.4	1.19	1.15	0.31
12,814.0	89.30	271.80	6,676.4	-363.8	-5,797.1	5,808.1	1.31	-1.15	0.63

Company:	PDC Energy Inc. DJ Basin	Local Co-ordinate Reference:	Well McGlothlin Farms 4X-234
Project:	SEC.4-T5N-R64W	TVD Reference:	WELL @ 4639.0ft (Ensign Rig #161 - RKB - 23')
Site:	McGlothlin Farms 5N64W4DX Pad Sec.4-T5N-R64W	MD Reference:	WELL @ 4639.0ft (Ensign Rig #161 - RKB - 23')
Well:	McGlothlin Farms 4X-234	North Reference:	True
Wellbore:	McGlothlin Farms 4X-234 Wellbore #1	Survey Calculation Method:	Minimum Curvature
Design:	McGlothlin Farms 4X-234 Wellbore #1	Database:	US_EDM

Survey									
Measured Depth (ft)	Inclination (°)	Azimuth (°)	Vertical Depth (ft)	+N/-S (ft)	+E/-W (ft)	Vertical Section (ft)	Dogleg Rate (°/100usft)	Build Rate (°/100usft)	Turn Rate (°/100usft)
12,910.0	89.80	271.10	6,677.2	-361.3	-5,893.0	5,903.8	0.90	0.52	-0.73
13,005.0	88.50	270.00	6,678.6	-360.4	-5,988.0	5,998.6	1.79	-1.37	-1.16
13,101.0	89.20	269.60	6,680.5	-360.7	-6,084.0	6,094.5	0.84	0.73	-0.42
13,197.0	89.80	270.00	6,681.3	-361.1	-6,180.0	6,190.4	0.75	0.63	0.42
13,293.0	90.60	270.40	6,681.0	-360.7	-6,276.0	6,286.2	0.93	0.83	0.42
13,389.0	89.90	269.60	6,680.6	-360.7	-6,372.0	6,382.1	1.11	-0.73	-0.83
13,485.0	90.70	269.30	6,680.1	-361.7	-6,468.0	6,478.0	0.89	0.83	-0.31
13,581.0	89.40	270.20	6,680.0	-362.1	-6,564.0	6,573.9	1.65	-1.35	0.94
13,677.0	89.70	269.50	6,680.7	-362.3	-6,660.0	6,669.8	0.79	0.31	-0.73
13,772.0	90.70	269.10	6,680.4	-363.5	-6,755.0	6,764.7	1.13	1.05	-0.42
13,868.0	88.60	269.10	6,681.0	-365.0	-6,850.9	6,860.6	2.19	-2.19	0.00
13,963.0	89.20	269.10	6,682.8	-366.5	-6,945.9	6,955.6	0.63	0.63	0.00
14,035.9	89.81	269.10	6,683.5	-367.6	-7,018.8	7,028.4	0.83	0.83	0.00
Deepest TVD Drilled 6683.5'									
14,059.0	90.00	269.10	6,683.5	-368.0	-7,041.9	7,051.5	0.83	0.83	0.00
14,155.0	91.00	269.10	6,682.7	-369.5	-7,137.9	7,147.4	1.04	1.04	0.00
14,255.0	92.00	268.80	6,680.0	-371.3	-7,237.8	7,247.3	1.04	1.00	-0.30
14,315.0	92.00	268.80	6,677.9	-372.6	-7,297.8	7,307.3	0.00	0.00	0.00

Design Targets									
Target Name	Dip Angle (°)	Dip Dir. (°)	TVD (ft)	+N/-S (ft)	+E/-W (ft)	Northing (usft)	Easting (usft)	Latitude	Longitude
- hit/miss target									
- Shape									
SHL 1194'FSL, 608'FEL, - survey hits target center - Point	0.00	0.00	1.0	0.0	0.0	1,398,825.23	3,265,063.00	40.424271	-104.547924
BHL 840'FSL, 2633'FEL - survey misses target center by 5.5ft at 14315.0ft MD (6677.9 TVD, -372.6 N, -7297.8 E) - Point	0.00	0.00	6,680.0	-377.4	-7,299.5	1,398,369.46	3,257,768.27	40.423232	-104.574141

Survey Annotations				
Measured Depth (ft)	Vertical Depth (ft)	Local Coordinates		Comment
		+N/-S (ft)	+E/-W (ft)	
6,858.0	6,621.4	-389.1	148.0	Cross Setback 796'FSL & 460'FEL, Sec.4
14,035.9	6,683.5	-367.6	-7,018.8	Deepest TVD Drilled 6683.5'

Checked By: _____	Approved By: _____	Date: _____
-------------------	--------------------	-------------