

PDC Energy Inc. DJ Basin

Well Name: **McGlothlin Farms 4X-204**

Surface Location: McGlothlin Farms 5N64W4DX Pad Sec.4-T5N-R64W
North American Datum 1983 , US State Plane 1983, Colorado Northern Zone

Ground Elevation: 4616.0

+N/-S	+E/-W	Northing	Easting	Latitude	Longitude	Slot
0.0	0.0	1398793.53	265163.02	40.424181	-104.547566	

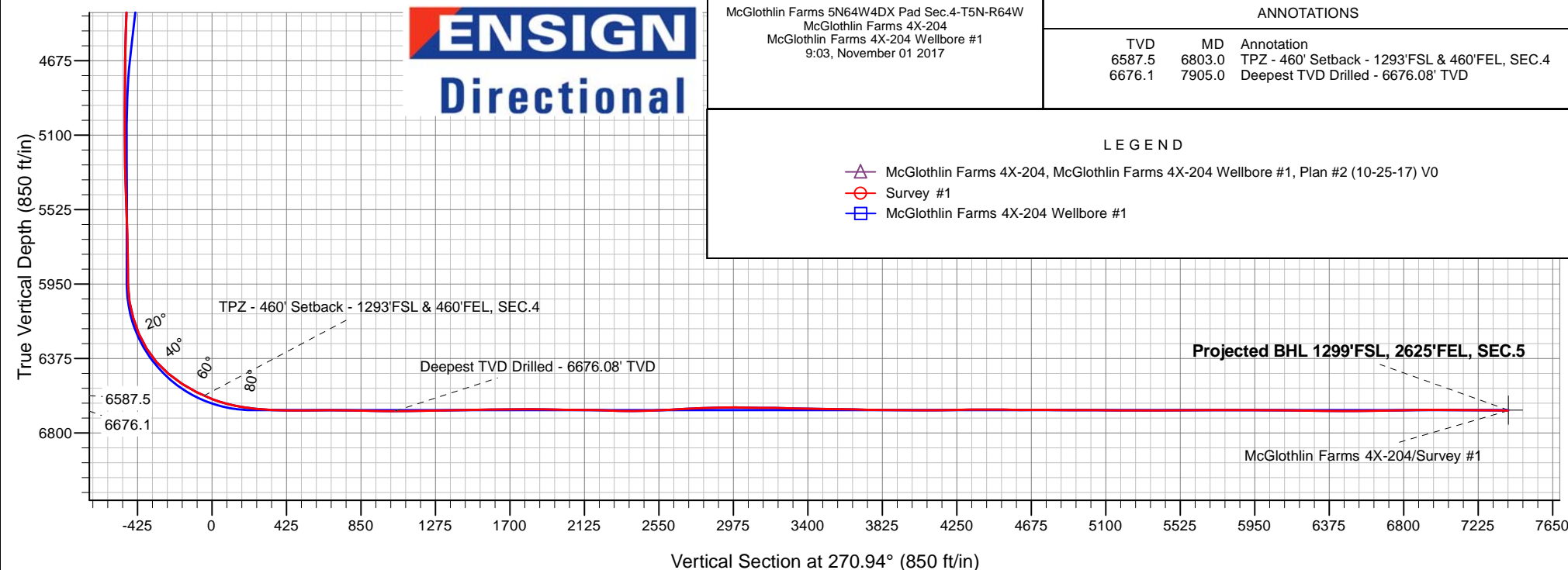
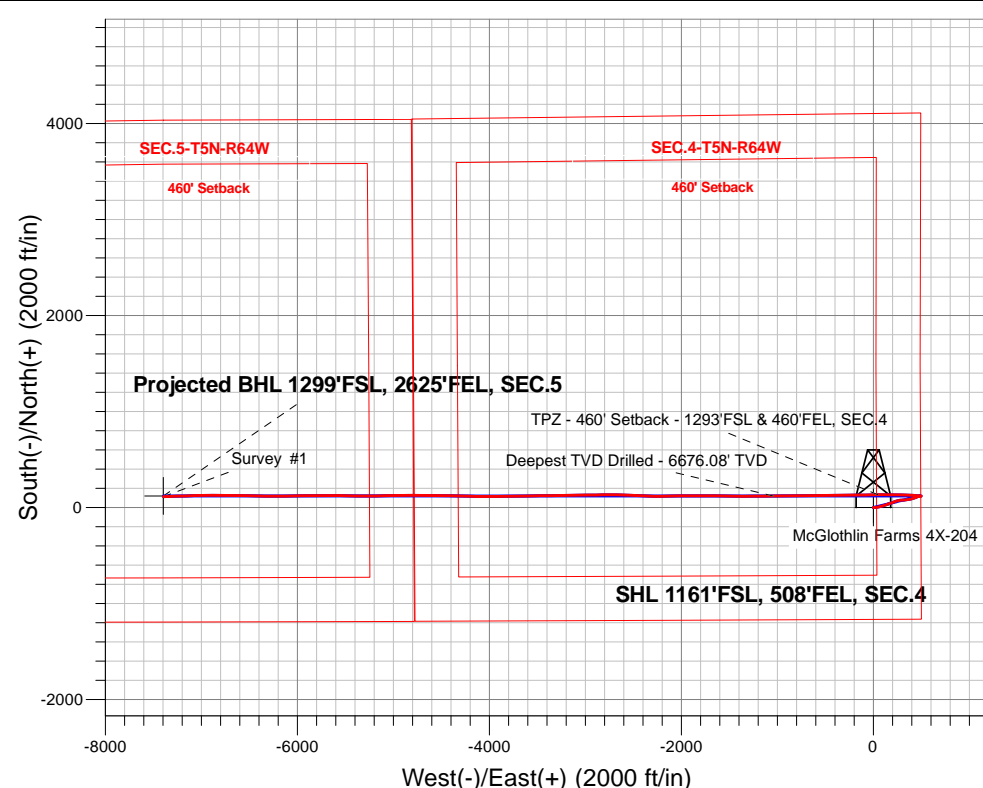
Ensign Rig - RKB - 23' WELL @ 4639.0ft (Ensign Rig - RKB - 23')

FINAL SURVEY

Projected Bottom Hole Location

14,259'MD 6672'TVD 113'N & 7395'W of SHL

89.3 degree Incl @ 267.7 degree AZM





PDC Energy Inc. DJ Basin

SEC.4-T5N-R64W

McGlothlin Farms 5N64W4DX Pad Sec.4-T5N-R64W

McGlothlin Farms 4X-204

McGlothlin Farms 4X-204 Wellbore #1

Survey: Survey #1

Standard Survey Report

01 November, 2017

Company:	PDC Energy Inc. DJ Basin	Local Co-ordinate Reference:	Well McGlothlin Farms 4X-204
Project:	SEC.4-T5N-R64W	TVD Reference:	WELL @ 4639.0ft (Ensign Rig - RKB - 23')
Site:	McGlothlin Farms 5N64W4DX Pad Sec.4-T5N-R64W	MD Reference:	WELL @ 4639.0ft (Ensign Rig - RKB - 23')
Well:	McGlothlin Farms 4X-204	North Reference:	True
Wellbore:	McGlothlin Farms 4X-204 Wellbore #1	Survey Calculation Method:	Minimum Curvature
Design:	McGlothlin Farms 4X-204 Wellbore #1	Database:	US_EDM

Project	SEC.4-T5N-R64W, Weld County, Colorado		
Map System:	US State Plane 1983	System Datum:	Mean Sea Level
Geo Datum:	North American Datum 1983		Using Well Reference Point
Map Zone:	Colorado Northern Zone		Using geodetic scale factor

Site	McGlothlin Farms 5N64W4DX Pad Sec.4-T5N-R64W				
Site Position:		Northing:	1,398,838.61 usft	Latitude:	40.424309
From:	Lat/Long	Easting:	3,265,019.98 usft	Longitude:	-104.548078
Position Uncertainty:	0.0 ft	Slot Radius:	13-3/16 "	Grid Convergence:	0.62 °

Well	McGlothlin Farms 4X-204					
Well Position	+N/-S	0.0 ft	Northing:	1,398,793.51 usft	Latitude:	40.424181
	+E/-W	0.0 ft	Easting:	3,265,163.02 usft	Longitude:	-104.547566
Position Uncertainty		0.0 ft	Wellhead Elevation:	0.0 ft	Ground Level:	4,616.0 ft

Wellbore	McGlothlin Farms 4X-204 Wellbore #1				
Magnetics	Model Name	Sample Date	Declination (°)	Dip Angle (°)	Field Strength (nT)
	IGRF2010	7/12/2017	7.93	66.89	52,528

Design	McGlothlin Farms 4X-204 Wellbore #1				
Audit Notes:					
Version:	1.0	Phase:	ACTUAL	Tie On Depth:	0.0
Vertical Section:	Depth From (TVD) (ft)	+N/-S (ft)	+E/-W (ft)	Direction (°)	
	0.0	0.0	0.0	270.94	

Survey Program	Date	11/1/2017			
From (ft)	To (ft)	Survey (Wellbore)	Tool Name	Description	
156.0	14,259.0	Survey #1 (McGlothlin Farms 4X-204 Well	MWD	MWD - Standard	

Survey										
Measured Depth (ft)	Inclination (°)	Azimuth (°)	Vertical Depth (ft)	+N/-S (ft)	+E/-W (ft)	Vertical Section (ft)	Dogleg Rate (°/100usft)	Build Rate (°/100usft)	Turn Rate (°/100usft)	
0.0	0.00	0.00	0.0	0.0	0.0	0.0	0.00	0.00	0.00	
1.0	0.00	111.60	1.0	0.0	0.0	0.0	0.32	0.32	0.00	
SHL 1161'FSL, 508'FEL, SEC.4										
156.0	0.50	111.60	156.0	-0.3	0.6	-0.6	0.32	0.32	0.00	
251.0	1.90	79.70	251.0	-0.1	2.6	-2.6	1.58	1.47	-33.58	
347.0	3.30	77.20	346.9	0.8	6.8	-6.8	1.46	1.46	-2.60	
443.0	4.40	96.20	442.7	1.0	13.2	-13.2	1.74	1.15	19.79	
539.0	6.30	89.00	538.2	0.7	22.1	-22.1	2.10	1.98	-7.50	
634.0	8.30	81.10	632.5	1.8	34.1	-34.1	2.35	2.11	-8.32	
730.0	9.40	77.50	727.3	4.6	48.6	-48.5	1.28	1.15	-3.75	

Company:	PDC Energy Inc. DJ Basin	Local Co-ordinate Reference:	Well McGlothlin Farms 4X-204
Project:	SEC.4-T5N-R64W	TVD Reference:	WELL @ 4639.0ft (Ensign Rig - RKB - 23')
Site:	McGlothlin Farms 5N64W4DX Pad Sec.4-T5N-R64W	MD Reference:	WELL @ 4639.0ft (Ensign Rig - RKB - 23')
Well:	McGlothlin Farms 4X-204	North Reference:	True
Wellbore:	McGlothlin Farms 4X-204 Wellbore #1	Survey Calculation Method:	Minimum Curvature
Design:	McGlothlin Farms 4X-204 Wellbore #1	Database:	US_EDM

Survey									
Measured Depth (ft)	Inclination (°)	Azimuth (°)	Vertical Depth (ft)	+N/-S (ft)	+E/-W (ft)	Vertical Section (ft)	Dogleg Rate (°/100usft)	Build Rate (°/100usft)	Turn Rate (°/100usft)
825.0	10.00	76.70	821.0	8.2	64.2	-64.1	0.65	0.63	-0.84
921.0	10.50	75.80	915.4	12.2	80.8	-80.6	0.55	0.52	-0.94
1,016.0	11.20	74.70	1,008.7	16.8	98.1	-97.8	0.77	0.74	-1.16
1,112.0	11.20	71.40	1,102.9	22.2	115.9	-115.5	0.67	0.00	-3.44
1,208.0	11.30	70.50	1,197.1	28.3	133.6	-133.1	0.21	0.10	-0.94
1,304.0	11.80	69.60	1,291.1	34.9	151.7	-151.1	0.55	0.52	-0.94
1,400.0	11.20	70.20	1,385.2	41.5	169.7	-169.0	0.64	-0.63	0.63
1,495.0	9.80	68.80	1,478.6	47.5	185.9	-185.1	1.50	-1.47	-1.47
1,610.0	8.70	71.20	1,592.1	53.9	203.2	-202.3	1.01	-0.96	2.09
1,683.0	8.40	68.80	1,664.3	57.6	213.4	-212.5	0.64	-0.41	-3.29
1,779.0	8.40	68.20	1,759.3	62.7	226.5	-225.4	0.09	0.00	-0.63
1,874.0	8.50	78.80	1,853.2	66.7	239.8	-238.7	1.64	0.11	11.16
1,969.0	7.90	76.50	1,947.3	69.6	253.0	-251.9	0.72	-0.63	-2.42
2,065.0	7.90	74.00	2,042.4	72.9	265.8	-264.6	0.36	0.00	-2.60
2,160.0	6.20	81.10	2,136.6	75.5	277.1	-275.9	2.01	-1.79	7.47
2,256.0	6.20	90.70	2,232.1	76.2	287.5	-286.2	1.08	0.00	10.00
2,352.0	6.30	88.80	2,327.5	76.3	297.9	-296.6	0.24	0.10	-1.98
2,447.0	5.90	85.80	2,422.0	76.8	308.0	-306.7	0.54	-0.42	-3.16
2,543.0	7.60	80.70	2,517.3	78.2	319.2	-317.8	1.88	1.77	-5.31
2,638.0	7.10	85.80	2,611.5	79.6	331.2	-329.9	0.86	-0.53	5.37
2,733.0	6.80	84.60	2,705.8	80.6	342.7	-341.3	0.35	-0.32	-1.26
2,829.0	6.30	83.70	2,801.2	81.7	353.6	-352.2	0.53	-0.52	-0.94
2,925.0	6.00	79.30	2,896.6	83.2	363.7	-362.3	0.58	-0.31	-4.58
3,020.0	5.60	81.20	2,991.2	84.8	373.2	-371.8	0.47	-0.42	2.00
3,116.0	5.90	74.00	3,086.7	86.9	382.6	-381.1	0.81	0.31	-7.50
3,212.0	5.80	76.70	3,182.2	89.4	392.0	-390.5	0.30	-0.10	2.81
3,308.0	5.40	77.90	3,277.7	91.4	401.2	-399.6	0.43	-0.42	1.25
3,404.0	5.00	74.40	3,373.3	93.5	409.6	-408.0	0.53	-0.42	-3.65
3,499.0	4.50	69.50	3,468.0	95.9	417.1	-415.5	0.68	-0.53	-5.16
3,595.0	4.50	70.30	3,563.7	98.5	424.2	-422.5	0.07	0.00	0.83
3,690.0	5.60	69.60	3,658.3	101.4	432.0	-430.3	1.16	1.16	-0.74
3,786.0	6.10	68.40	3,753.8	104.9	441.2	-439.4	0.54	0.52	-1.25
3,883.0	5.80	65.60	3,850.3	108.8	450.4	-448.6	0.43	-0.31	-2.89
3,978.0	5.60	67.20	3,944.8	112.6	459.1	-457.1	0.27	-0.21	1.68
4,074.0	4.90	65.40	4,040.4	116.1	467.1	-465.1	0.75	-0.73	-1.88
4,170.0	4.00	83.00	4,136.1	118.2	474.2	-472.1	1.69	-0.94	18.33
4,265.0	3.70	81.90	4,230.9	119.1	480.5	-478.5	0.33	-0.32	-1.16
4,361.0	3.30	75.80	4,326.7	120.2	486.2	-484.2	0.57	-0.42	-6.35
4,457.0	2.30	87.40	4,422.6	120.9	490.8	-488.8	1.19	-1.04	12.08
4,553.0	1.40	104.80	4,518.6	120.7	493.9	-491.8	1.09	-0.94	18.13
4,648.0	1.20	66.30	4,613.6	120.8	495.9	-493.9	0.92	-0.21	-40.53
4,744.0	1.10	93.70	4,709.5	121.2	497.8	-495.7	0.58	-0.10	28.54

Company:	PDC Energy Inc. DJ Basin	Local Co-ordinate Reference:	Well McGlothlin Farms 4X-204
Project:	SEC.4-T5N-R64W	TVD Reference:	WELL @ 4639.0ft (Ensign Rig - RKB - 23')
Site:	McGlothlin Farms 5N64W4DX Pad Sec.4-T5N-R64W	MD Reference:	WELL @ 4639.0ft (Ensign Rig - RKB - 23')
Well:	McGlothlin Farms 4X-204	North Reference:	True
Wellbore:	McGlothlin Farms 4X-204 Wellbore #1	Survey Calculation Method:	Minimum Curvature
Design:	McGlothlin Farms 4X-204 Wellbore #1	Database:	US_EDM

Survey									
Measured Depth (ft)	Inclination (°)	Azimuth (°)	Vertical Depth (ft)	+N/-S (ft)	+E/-W (ft)	Vertical Section (ft)	Dogleg Rate (°/100usft)	Build Rate (°/100usft)	Turn Rate (°/100usft)
4,840.0	0.40	107.40	4,805.5	121.0	499.0	-496.9	0.75	-0.73	14.27
4,936.0	0.40	302.70	4,901.5	121.1	499.0	-497.0	0.83	0.00	-171.56
5,032.0	0.30	70.90	4,997.5	121.4	499.0	-496.9	0.66	-0.10	133.54
5,128.0	0.60	191.60	5,093.5	120.9	499.1	-497.1	0.83	0.31	125.73
5,223.0	0.90	200.20	5,188.5	119.8	498.8	-496.7	0.34	0.32	9.05
5,319.0	1.40	276.50	5,284.5	119.2	497.3	-495.3	1.54	0.52	79.48
5,415.0	1.90	261.10	5,380.5	119.1	494.6	-492.6	0.69	0.52	-16.04
5,511.0	1.60	258.60	5,476.4	118.6	491.7	-489.7	0.32	-0.31	-2.60
5,607.0	2.40	266.90	5,572.4	118.2	488.4	-486.4	0.88	0.83	8.65
5,702.0	2.10	254.60	5,667.3	117.6	484.7	-482.7	0.60	-0.32	-12.95
5,798.0	0.40	309.70	5,763.3	117.4	482.8	-480.8	1.98	-1.77	57.40
5,894.0	0.30	358.40	5,859.3	117.8	482.5	-480.5	0.32	-0.10	50.73
5,990.0	1.10	291.80	5,955.3	118.4	481.7	-479.6	1.06	0.83	-69.38
6,086.0	9.90	279.50	6,050.7	120.1	472.6	-470.6	9.20	9.17	-12.81
6,181.0	15.90	275.60	6,143.3	122.8	451.6	-449.5	6.38	6.32	-4.11
6,277.0	23.50	275.50	6,233.6	125.9	419.4	-417.3	7.92	7.92	-0.10
6,373.0	31.50	272.80	6,318.7	128.9	375.3	-373.1	8.43	8.33	-2.81
6,468.0	41.00	272.30	6,395.2	131.4	319.2	-317.0	10.00	10.00	-0.53
6,564.0	50.20	271.10	6,462.3	133.4	250.7	-248.5	9.62	9.58	-1.25
6,660.0	57.00	269.30	6,519.2	133.6	173.5	-171.3	7.24	7.08	-1.88
6,756.0	63.00	269.30	6,567.2	132.6	90.4	-88.2	6.25	6.25	0.00
6,803.0	65.99	269.40	6,587.5	132.1	48.0	-45.8	6.36	6.35	0.21
TPZ - 460' Setback - 1293'FSL & 460'FEL, SEC.4									
6,852.0	69.10	269.50	6,606.2	131.7	2.7	-0.5	6.36	6.35	0.20
6,947.0	75.30	269.30	6,635.2	130.7	-87.7	89.8	6.53	6.53	-0.21
7,043.0	82.30	270.20	6,653.8	130.3	-181.8	183.9	7.35	7.29	0.94
7,090.9	83.45	269.25	6,659.8	130.1	-229.3	231.4	3.10	2.39	-1.98
LPL 1282'FSL, 736'FEL, SEC.4									
7,139.0	84.60	268.30	6,664.8	129.1	-277.2	279.2	3.10	2.40	-1.97
7,235.0	88.30	269.10	6,670.7	126.9	-372.9	375.0	3.94	3.85	0.83
7,331.0	89.90	269.70	6,672.2	125.9	-468.9	470.9	1.78	1.67	0.63
7,426.0	90.40	269.70	6,672.0	125.4	-563.9	565.9	0.53	0.53	0.00
7,522.0	90.60	268.60	6,671.2	124.0	-659.9	661.8	1.16	0.21	-1.15
7,618.0	89.30	268.80	6,671.2	121.8	-755.9	757.8	1.37	-1.35	0.21
7,713.0	89.10	270.00	6,672.6	120.8	-850.9	852.7	1.28	-0.21	1.26
7,809.0	88.40	269.70	6,674.7	120.5	-946.8	948.7	0.79	-0.73	-0.31
7,905.0	89.90	269.80	6,676.1	120.1	-1,042.8	1,044.6	1.57	1.56	0.10
Deepest TVD Drilled - 6676.08' TVD									
8,029.0	91.10	269.50	6,675.0	119.4	-1,166.8	1,168.6	1.00	0.97	-0.24
8,125.0	91.50	268.80	6,672.8	117.9	-1,262.8	1,264.5	0.84	0.42	-0.73
8,221.0	91.70	270.40	6,670.1	117.3	-1,358.7	1,360.5	1.68	0.21	1.67
8,316.0	90.00	271.10	6,668.7	118.5	-1,453.7	1,455.5	1.94	-1.79	0.74
8,412.0	90.60	270.90	6,668.2	120.2	-1,549.7	1,551.4	0.66	0.63	-0.21

Company:	PDC Energy Inc. DJ Basin	Local Co-ordinate Reference:	Well McGlothlin Farms 4X-204
Project:	SEC.4-T5N-R64W	TVD Reference:	WELL @ 4639.0ft (Ensign Rig - RKB - 23')
Site:	McGlothlin Farms 5N64W4DX Pad Sec.4-T5N-R64W	MD Reference:	WELL @ 4639.0ft (Ensign Rig - RKB - 23')
Well:	McGlothlin Farms 4X-204	North Reference:	True
Wellbore:	McGlothlin Farms 4X-204 Wellbore #1	Survey Calculation Method:	Minimum Curvature
Design:	McGlothlin Farms 4X-204 Wellbore #1	Database:	US_EDM

Survey									
Measured Depth (ft)	Inclination (°)	Azimuth (°)	Vertical Depth (ft)	+N/-S (ft)	+E/-W (ft)	Vertical Section (ft)	Dogleg Rate (°/100usft)	Build Rate (°/100usft)	Turn Rate (°/100usft)
8,507.0	91.90	270.60	6,666.2	121.4	-1,644.7	1,646.4	1.40	1.37	-0.32
8,603.0	90.10	270.50	6,664.5	122.4	-1,740.6	1,742.4	1.88	-1.88	-0.10
8,699.0	89.00	270.20	6,665.2	122.9	-1,836.6	1,838.4	1.19	-1.15	-0.31
8,794.0	89.00	269.50	6,666.9	122.7	-1,931.6	1,933.4	0.74	0.00	-0.74
8,890.0	89.30	268.80	6,668.3	121.3	-2,027.6	2,029.3	0.79	0.31	-0.73
8,986.0	89.80	268.10	6,669.1	118.7	-2,123.5	2,125.2	0.90	0.52	-0.73
9,081.0	87.90	269.80	6,671.0	116.9	-2,218.5	2,220.1	2.68	-2.00	1.79
9,177.0	88.50	271.80	6,674.0	118.3	-2,314.4	2,316.1	2.17	0.63	2.08
9,273.0	90.10	272.70	6,675.2	122.0	-2,410.4	2,412.0	1.91	1.67	0.94
9,369.0	92.90	272.70	6,672.7	126.6	-2,506.2	2,507.9	2.92	2.92	0.00
9,465.0	92.80	271.60	6,667.9	130.2	-2,602.0	2,603.8	1.15	-0.10	-1.15
9,561.0	92.90	271.40	6,663.1	132.7	-2,697.9	2,699.7	0.23	0.10	-0.21
9,657.0	92.60	269.10	6,658.5	133.1	-2,793.8	2,795.6	2.41	-0.31	-2.40
9,753.0	91.10	269.00	6,655.4	131.5	-2,889.7	2,891.5	1.57	-1.56	-0.10
9,848.0	89.80	269.10	6,654.7	129.9	-2,984.7	2,986.4	1.37	-1.37	0.11
9,944.0	88.60	269.00	6,656.0	128.3	-3,080.6	3,082.3	1.25	-1.25	-0.10
10,039.0	89.80	268.30	6,657.3	126.1	-3,175.6	3,177.2	1.46	1.26	-0.74
10,135.0	88.10	269.50	6,659.1	124.2	-3,271.6	3,273.2	2.17	-1.77	1.25
10,231.0	89.30	269.10	6,661.3	123.1	-3,367.5	3,369.1	1.32	1.25	-0.42
10,326.0	88.60	269.50	6,663.0	121.9	-3,462.5	3,464.0	0.85	-0.74	0.42
10,422.0	89.90	268.30	6,664.3	120.1	-3,558.5	3,560.0	1.84	1.35	-1.25
10,518.0	88.30	269.80	6,665.8	118.5	-3,654.4	3,655.9	2.28	-1.67	1.56
10,613.0	88.90	269.70	6,668.1	118.1	-3,749.4	3,750.8	0.64	0.63	-0.11
10,708.0	89.70	268.80	6,669.2	116.8	-3,844.4	3,845.8	1.27	0.84	-0.95
10,804.0	89.50	268.40	6,669.9	114.5	-3,940.4	3,941.7	0.47	-0.21	-0.42
10,900.0	89.80	270.40	6,670.5	113.5	-4,036.4	4,037.7	2.11	0.31	2.08
10,995.0	90.30	271.60	6,670.4	115.1	-4,131.3	4,132.7	1.37	0.53	1.26
11,091.0	91.60	271.80	6,668.8	118.0	-4,227.3	4,228.6	1.37	1.35	0.21
11,187.0	89.70	271.30	6,667.7	120.6	-4,323.2	4,324.6	2.05	-1.98	-0.52
11,283.0	90.70	271.30	6,667.4	122.8	-4,419.2	4,420.6	1.04	1.04	0.00
11,379.0	89.00	270.90	6,667.7	124.6	-4,515.2	4,516.6	1.82	-1.77	-0.42
11,475.0	89.70	270.30	6,668.7	125.6	-4,611.2	4,612.6	0.96	0.73	-0.63
11,570.0	90.60	270.40	6,668.5	126.2	-4,706.2	4,707.6	0.95	0.95	0.11
11,666.0	89.10	269.70	6,668.7	126.3	-4,802.2	4,803.6	1.72	-1.56	-0.73
11,762.0	89.40	269.50	6,670.0	125.6	-4,898.2	4,899.6	0.38	0.31	-0.21
11,857.0	90.40	269.30	6,670.2	124.6	-4,993.2	4,994.5	1.07	1.05	-0.21
11,953.0	89.10	268.80	6,670.6	123.0	-5,089.1	5,090.5	1.45	-1.35	-0.52
12,049.0	90.00	268.60	6,671.3	120.8	-5,185.1	5,186.4	0.96	0.94	-0.21
12,144.0	89.30	270.70	6,671.9	120.3	-5,280.1	5,281.4	2.33	-0.74	2.21
12,240.0	90.10	270.70	6,672.4	121.4	-5,376.1	5,377.4	0.83	0.83	0.00
12,336.0	91.50	270.40	6,671.1	122.3	-5,472.1	5,473.3	1.49	1.46	-0.31
12,432.0	89.30	270.50	6,670.4	123.1	-5,568.1	5,569.3	2.29	-2.29	0.10
12,527.0	90.30	270.20	6,670.7	123.7	-5,663.1	5,664.3	1.10	1.05	-0.32

Company:	PDC Energy Inc. DJ Basin	Local Co-ordinate Reference:	Well McGlothlin Farms 4X-204
Project:	SEC.4-T5N-R64W	TVD Reference:	WELL @ 4639.0ft (Ensign Rig - RKB - 23')
Site:	McGlothlin Farms 5N64W4DX Pad Sec.4-T5N-R64W	MD Reference:	WELL @ 4639.0ft (Ensign Rig - RKB - 23')
Well:	McGlothlin Farms 4X-204	North Reference:	True
Wellbore:	McGlothlin Farms 4X-204 Wellbore #1	Survey Calculation Method:	Minimum Curvature
Design:	McGlothlin Farms 4X-204 Wellbore #1	Database:	US_EDM

Survey										
Measured Depth (ft)	Inclination (°)	Azimuth (°)	Vertical Depth (ft)	+N/-S (ft)	+E/-W (ft)	Vertical Section (ft)	Dogleg Rate (°/100usft)	Build Rate (°/100usft)	Turn Rate (°/100usft)	
12,623.0	91.10	269.80	6,669.6	123.7	-5,759.0	5,760.3	0.93	0.83	-0.42	
12,719.0	90.00	269.70	6,668.7	123.3	-5,855.0	5,856.3	1.15	-1.15	-0.10	
12,814.0	88.60	269.30	6,669.8	122.4	-5,950.0	5,951.2	1.53	-1.47	-0.42	
12,911.0	89.80	268.60	6,671.2	120.7	-6,047.0	6,048.2	1.43	1.24	-0.72	
13,006.0	89.30	269.70	6,671.9	119.2	-6,142.0	6,143.1	1.27	-0.53	1.16	
13,102.0	89.60	269.10	6,672.8	118.2	-6,238.0	6,239.1	0.70	0.31	-0.63	
13,198.0	89.30	270.70	6,673.8	118.1	-6,334.0	6,335.1	1.70	-0.31	1.67	
13,294.0	89.60	271.40	6,674.7	119.8	-6,429.9	6,431.0	0.79	0.31	0.73	
13,390.0	90.10	272.00	6,674.9	122.7	-6,525.9	6,527.0	0.81	0.52	0.63	
13,454.0	91.10	271.40	6,674.3	124.6	-6,589.9	6,591.0	1.82	1.56	-0.94	
13,550.0	90.70	270.70	6,672.8	126.3	-6,685.8	6,687.0	0.84	-0.42	-0.73	
13,646.0	91.00	270.00	6,671.3	126.9	-6,781.8	6,783.0	0.79	0.31	-0.73	
13,742.0	91.50	269.50	6,669.2	126.5	-6,877.8	6,879.0	0.74	0.52	-0.52	
13,837.0	89.70	269.30	6,668.2	125.5	-6,972.8	6,973.9	1.91	-1.89	-0.21	
13,932.0	89.60	268.80	6,668.8	123.9	-7,067.8	7,068.9	0.54	-0.11	-0.53	
14,028.0	89.40	268.10	6,669.7	121.3	-7,163.7	7,164.8	0.76	-0.21	-0.73	
14,124.0	89.30	267.90	6,670.7	118.0	-7,259.7	7,260.6	0.23	-0.10	-0.21	
14,199.0	89.30	267.70	6,671.7	115.1	-7,334.6	7,335.5	0.27	0.00	-0.27	
14,259.0	89.30	267.70	6,672.4	112.7	-7,394.6	7,395.4	0.00	0.00	0.00	
BHL 1306'FSL, 2627'FEL, SEC.5										

Design Targets										
Target Name	Dip Angle (°)	Dip Dir. (°)	TVD (ft)	+N/-S (ft)	+E/-W (ft)	Northing (usft)	Easting (usft)	Latitude	Longitude	
SHL 1161'FSL, 508'FEL, - hit/miss target - Shape - Point	0.00	0.00	1.0	0.0	0.0	1,398,793.52	3,265,163.02	40.424181	-104.547566	
BHL 1306'FSL, 2627'FEL - survey misses target center by 9.2ft at 14259.0ft MD (6672.4 TVD, 112.7 N, -7394.6 E) - Point	0.00	0.00	6,670.0	121.3	-7,396.5	1,398,835.40	3,257,765.91	40.424511	-104.574132	

Survey Annotations					
Measured Depth (ft)	Vertical Depth (ft)	Local Coordinates			
		+N/-S (ft)	+E/-W (ft)	Comment	
6,803.0	6,587.5	132.1	48.0	TPZ - 460' Setback - 1293'FSL & 460'FEL, SEC.4	
7,905.0	6,676.1	120.1	-1,042.8	Deepest TVD Drilled - 6676.08' TVD	

Checked By: _____	Approved By: _____	Date: _____
-------------------	--------------------	-------------