

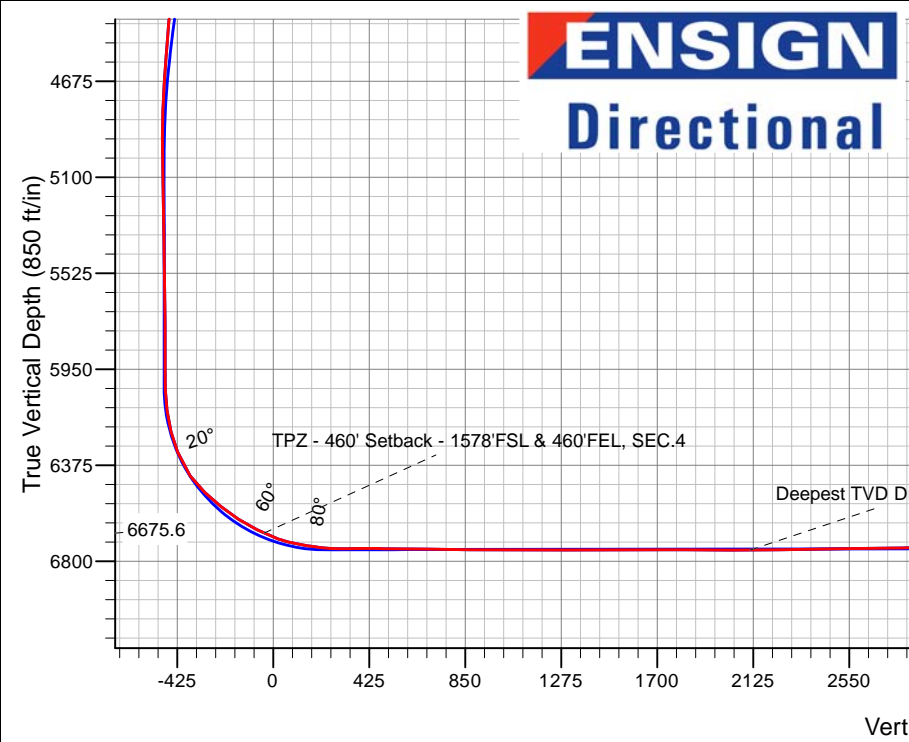
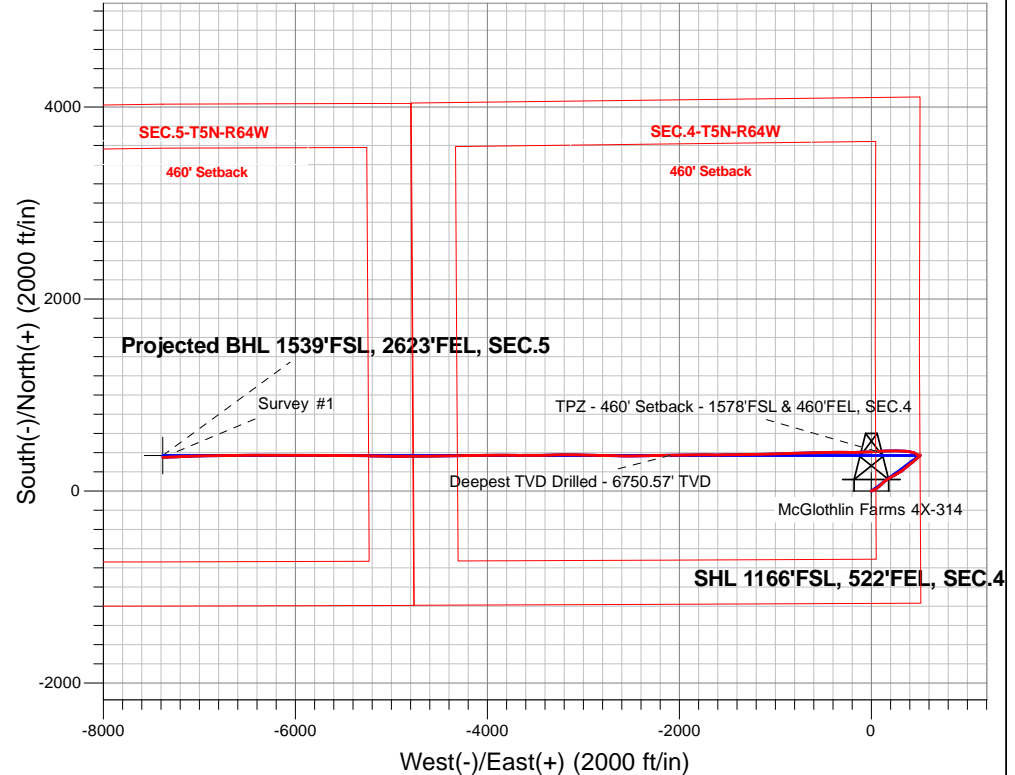
PDC Energy Inc. DJ Basin

Well Name: **McGlothlin Farms 4X-314**

Surface Location: McGlothlin Farms 5N64W4DX Pad Sec.4-T5N-R64W
 North American Datum 1983 , US State Plane 1983, Colorado Northern Zone
 Ground Elevation: 4616.0
 +N/-S+E/-W Northing Easting Longitude Slot
 0.0 0.0 1398798.093265148.77 40.424194 -104.547617
 Ensign Rig #161 - RKB - 23'WELL @ 4639.0ft (Ensign Rig #161 - RKB - 23')

FINAL SURVEY

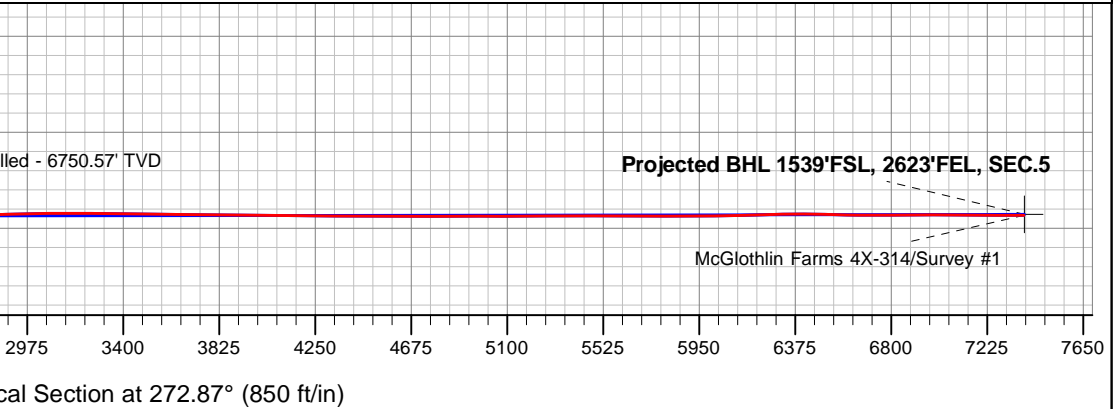
Projected Bottom Hole Location
14,363'MD 6743'TVD 350'N & 7379'W of SHL
89.7 degree Incl @ 266.7 degree AZM



McGlothlin Farms 5N64W4DX Pad Sec.4-T5N-R64W
 McGlothlin Farms 4X-314
 McGlothlin Farms 4X-314 Wellbore #1
 12:21, October 25 2017

ANNOTATIONS		
TVD	MD	Annotation
6675.6	6910.0	TPZ - 460' Setback - 1578'FSL & 460'FEL, SEC.4
6750.6	9077.0	Deepest TVD Drilled - 6750.57' TVD

LEGEND	
	McGlothlin Farms 4X-314, McGlothlin Farms 4X-314 Wellbore #1, Plan #2 (10-18-17) V0
	Survey #1
	McGlothlin Farms 4X-314 Wellbore #1





PDC Energy Inc. DJ Basin

SEC.4-T5N-R64W

McGlothlin Farms 5N64W4DX Pad Sec.4-T5N-R64W

McGlothlin Farms 4X-314

McGlothlin Farms 4X-314 Wellbore #1

Survey: Survey #1

Standard Survey Report

25 October, 2017



Company:	PDC Energy Inc. DJ Basin	Local Co-ordinate Reference:	Well McGlothlin Farms 4X-314
Project:	SEC.4-T5N-R64W	TVD Reference:	WELL @ 4639.0ft (Ensign Rig #161 - RKB - 23')
Site:	McGlothlin Farms 5N64W4DX Pad Sec.4-T5N-R64W	MD Reference:	WELL @ 4639.0ft (Ensign Rig #161 - RKB - 23')
Well:	McGlothlin Farms 4X-314	North Reference:	True
Wellbore:	McGlothlin Farms 4X-314 Wellbore #1	Survey Calculation Method:	Minimum Curvature
Design:	McGlothlin Farms 4X-314 Wellbore #1	Database:	US_EDM

Project	SEC.4-T5N-R64W, Weld County, Colorado		
Map System:	US State Plane 1983	System Datum:	Mean Sea Level
Geo Datum:	North American Datum 1983		Using Well Reference Point
Map Zone:	Colorado Northern Zone		Using geodetic scale factor

Site	McGlothlin Farms 5N64W4DX Pad Sec.4-T5N-R64W				
Site Position:		Northing:	1,398,838.61 usft	Latitude:	40.424309
From:	Lat/Long	Easting:	3,265,019.98 usft	Longitude:	-104.548078
Position Uncertainty:	0.0 ft	Slot Radius:	13-3/16 "	Grid Convergence:	0.62 °

Well	McGlothlin Farms 4X-314					
Well Position	+N/-S	0.0 ft	Northing:	1,398,798.09 usft	Latitude:	40.424194
	+E/-W	0.0 ft	Easting:	3,265,148.77 usft	Longitude:	-104.547617
Position Uncertainty		0.0 ft	Wellhead Elevation:	0.0 ft	Ground Level:	4,616.0 ft

Wellbore	McGlothlin Farms 4X-314 Wellbore #1				
Magnetics	Model Name	Sample Date	Declination (°)	Dip Angle (°)	Field Strength (nT)
	IGRF2010	7/12/2017	7.93	66.89	52,528

Design	McGlothlin Farms 4X-314 Wellbore #1				
Audit Notes:					
Version:	1.0	Phase:	ACTUAL	Tie On Depth:	0.0
Vertical Section:	Depth From (TVD) (ft)	+N/-S (ft)	+E/-W (ft)	Direction (°)	
	0.0	0.0	0.0	272.87	

Survey Program	Date	10/25/2017			
From (ft)	To (ft)	Survey (Wellbore)	Tool Name	Description	
156.0	14,363.0	Survey #1 (McGlothlin Farms 4X-314 Well	MWD	MWD - Standard	

Measured Depth (ft)	Inclination (°)	Azimuth (°)	Vertical Depth (ft)	+N/-S (ft)	+E/-W (ft)	Vertical Section (ft)	Dogleg Rate (°/100usft)	Build Rate (°/100usft)	Turn Rate (°/100usft)	
0.0	0.00	0.00	0.0	0.0	0.0	0.0	0.00	0.00	0.00	
1.0	0.00	57.50	1.0	0.0	0.0	0.0	0.00	0.00	0.00	
SHL 1166'FSL, 522'FEL, SEC.4										
156.0	0.20	57.50	156.0	0.1	0.2	-0.2	0.13	0.13	0.00	
251.0	0.40	17.10	251.0	0.6	0.5	-0.4	0.29	0.21	-42.53	
347.0	0.30	13.90	347.0	1.1	0.6	-0.6	0.11	-0.10	-3.33	
443.0	1.80	65.20	443.0	2.0	2.1	-2.0	1.70	1.56	53.44	
539.0	3.30	68.80	538.9	3.6	6.0	-5.8	1.57	1.56	3.75	
634.0	5.00	73.50	633.6	5.8	12.5	-12.2	1.82	1.79	4.95	
730.0	6.80	66.50	729.1	9.2	21.7	-21.3	2.02	1.88	-7.29	

Company:	PDC Energy Inc. DJ Basin	Local Co-ordinate Reference:	Well McGlothlin Farms 4X-314
Project:	SEC.4-T5N-R64W	TVD Reference:	WELL @ 4639.0ft (Ensign Rig #161 - RKB - 23')
Site:	McGlothlin Farms 5N64W4DX Pad Sec.4-T5N-R64W	MD Reference:	WELL @ 4639.0ft (Ensign Rig #161 - RKB - 23')
Well:	McGlothlin Farms 4X-314	North Reference:	True
Wellbore:	McGlothlin Farms 4X-314 Wellbore #1	Survey Calculation Method:	Minimum Curvature
Design:	McGlothlin Farms 4X-314 Wellbore #1	Database:	US_EDM

Survey										
Measured Depth (ft)	Inclination (°)	Azimuth (°)	Vertical Depth (ft)	+N/-S (ft)	+E/-W (ft)	Vertical Section (ft)	Dogleg Rate (°/100usft)	Build Rate (°/100usft)	Turn Rate (°/100usft)	
825.0	8.00	63.10	823.3	14.5	32.8	-32.0	1.34	1.26	-3.58	
921.0	9.20	60.10	918.2	21.3	45.4	-44.3	1.33	1.25	-3.13	
1,016.0	9.80	54.20	1,011.9	29.8	58.5	-57.0	1.20	0.63	-6.21	
1,112.0	9.50	48.70	1,106.6	39.8	71.1	-69.0	1.01	-0.31	-5.73	
1,208.0	9.60	46.60	1,201.3	50.6	82.9	-80.3	0.38	0.10	-2.19	
1,304.0	9.70	45.20	1,295.9	61.8	94.5	-91.2	0.27	0.10	-1.46	
1,400.0	9.60	48.90	1,390.5	72.7	106.2	-102.4	0.65	-0.10	3.85	
1,495.0	8.50	46.30	1,484.4	82.8	117.3	-113.0	1.24	-1.16	-2.74	
1,591.0	7.50	48.00	1,579.4	91.9	127.1	-122.3	1.07	-1.04	1.77	
1,625.0	7.00	47.00	1,613.1	94.8	130.2	-125.3	1.52	-1.47	-2.94	
1,683.0	6.30	45.20	1,670.8	99.4	135.1	-129.9	1.26	-1.21	-3.10	
1,778.0	6.90	54.30	1,765.1	106.4	143.4	-137.9	1.27	0.63	9.58	
1,874.0	8.20	56.80	1,860.3	113.6	153.8	-147.9	1.40	1.35	2.60	
1,969.0	10.30	59.30	1,954.1	121.6	166.8	-160.5	2.25	2.21	2.63	
2,065.0	10.00	61.00	2,048.6	130.0	181.4	-174.7	0.44	-0.31	1.77	
2,160.0	9.10	58.70	2,142.2	137.9	195.1	-187.9	1.03	-0.95	-2.42	
2,256.0	8.40	57.10	2,237.1	145.7	207.5	-199.9	0.77	-0.73	-1.67	
2,352.0	8.60	58.70	2,332.1	153.2	219.5	-211.5	0.32	0.21	1.67	
2,447.0	9.70	61.90	2,425.9	160.7	232.6	-224.3	1.28	1.16	3.37	
2,543.0	9.40	61.90	2,520.5	168.2	246.7	-237.9	0.31	-0.31	0.00	
2,638.0	8.70	60.80	2,614.3	175.3	259.8	-250.7	0.76	-0.74	-1.16	
2,733.0	9.80	59.80	2,708.1	182.9	273.0	-263.5	1.17	1.16	-1.05	
2,829.0	9.80	61.00	2,802.7	191.0	287.2	-277.3	0.21	0.00	1.25	
2,925.0	10.10	59.30	2,897.3	199.2	301.6	-291.3	0.44	0.31	-1.77	
3,020.0	10.50	53.60	2,990.7	208.6	315.8	-304.9	1.15	0.42	-6.00	
3,116.0	9.80	49.40	3,085.2	219.1	329.0	-317.6	1.06	-0.73	-4.38	
3,212.0	8.90	49.10	3,180.0	229.3	340.8	-328.9	0.94	-0.94	-0.31	
3,308.0	8.10	49.90	3,274.9	238.5	351.6	-339.2	0.84	-0.83	0.83	
3,404.0	8.40	48.90	3,369.9	247.5	362.1	-349.2	0.35	0.31	-1.04	
3,499.0	8.10	46.10	3,463.9	256.7	372.1	-358.8	0.53	-0.32	-2.95	
3,595.0	9.10	52.20	3,558.8	266.1	383.0	-369.2	1.41	1.04	6.35	
3,690.0	9.60	53.10	3,652.6	275.4	395.3	-380.9	0.55	0.53	0.95	
3,786.0	9.50	52.20	3,747.3	285.1	407.9	-393.1	0.19	-0.10	-0.94	
3,882.0	9.40	51.90	3,841.9	294.8	420.3	-405.0	0.12	-0.10	-0.31	
3,978.0	8.70	50.80	3,936.8	304.2	432.1	-416.3	0.75	-0.73	-1.15	
4,074.0	8.20	50.10	4,031.7	313.2	443.0	-426.8	0.53	-0.52	-0.73	
4,169.0	7.90	50.50	4,125.8	321.7	453.3	-436.6	0.32	-0.32	0.42	
4,265.0	7.40	48.00	4,220.9	330.0	462.9	-445.8	0.63	-0.52	-2.60	
4,361.0	7.10	47.00	4,316.2	338.2	471.9	-454.3	0.34	-0.31	-1.04	
4,457.0	6.40	47.10	4,411.5	345.9	480.1	-462.2	0.73	-0.73	0.10	
4,553.0	6.00	49.40	4,506.9	352.8	487.9	-469.6	0.49	-0.42	2.40	
4,648.0	5.50	51.90	4,601.4	358.8	495.2	-476.6	0.59	-0.53	2.63	

Company:	PDC Energy Inc. DJ Basin	Local Co-ordinate Reference:	Well McGlothlin Farms 4X-314
Project:	SEC.4-T5N-R64W	TVD Reference:	WELL @ 4639.0ft (Ensign Rig #161 - RKB - 23')
Site:	McGlothlin Farms 5N64W4DX Pad Sec.4-T5N-R64W	MD Reference:	WELL @ 4639.0ft (Ensign Rig #161 - RKB - 23')
Well:	McGlothlin Farms 4X-314	North Reference:	True
Wellbore:	McGlothlin Farms 4X-314 Wellbore #1	Survey Calculation Method:	Minimum Curvature
Design:	McGlothlin Farms 4X-314 Wellbore #1	Database:	US_EDM

Survey										
Measured Depth (ft)	Inclination (°)	Azimuth (°)	Vertical Depth (ft)	+N/-S (ft)	+E/-W (ft)	Vertical Section (ft)	Dogleg Rate (°/100usft)	Build Rate (°/100usft)	Turn Rate (°/100usft)	
4,744.0	4.80	51.00	4,697.1	364.2	502.0	-483.1	0.73	-0.73	-0.94	
4,840.0	3.70	41.00	4,792.8	369.1	507.1	-488.0	1.38	-1.15	-10.42	
4,936.0	2.00	11.60	4,888.7	373.0	509.5	-490.1	2.28	-1.77	-30.63	
5,032.0	0.70	266.90	4,984.7	374.6	509.2	-489.8	2.38	-1.35	-109.06	
5,127.0	1.00	260.90	5,079.6	374.5	507.8	-488.4	0.33	0.32	-6.32	
5,223.0	1.10	259.60	5,175.6	374.2	506.1	-486.7	0.11	0.10	-1.35	
5,319.0	1.00	262.50	5,271.6	373.9	504.4	-485.0	0.12	-0.10	3.02	
5,415.0	0.80	262.10	5,367.6	373.7	502.9	-483.5	0.21	-0.21	-0.42	
5,511.0	1.00	260.50	5,463.6	373.5	501.4	-482.0	0.21	0.21	-1.67	
5,607.0	0.50	273.20	5,559.6	373.4	500.1	-480.8	0.55	-0.52	13.23	
5,702.0	0.60	291.10	5,654.6	373.6	499.3	-479.9	0.21	0.11	18.84	
5,798.0	0.60	271.60	5,750.6	373.8	498.3	-478.9	0.21	0.00	-20.31	
5,894.0	0.30	261.40	5,846.6	373.7	497.5	-478.2	0.32	-0.31	-10.63	
5,989.0	1.00	161.70	5,941.6	372.9	497.5	-478.2	1.15	0.74	-104.95	
6,085.0	1.10	231.90	6,037.6	371.5	497.1	-477.8	1.26	0.10	73.13	
6,181.0	8.80	297.30	6,133.1	374.4	489.8	-470.4	8.75	8.02	68.13	
6,277.0	15.80	300.40	6,226.9	384.3	472.0	-452.1	7.32	7.29	3.23	
6,372.0	23.00	295.30	6,316.4	398.8	444.0	-423.5	7.78	7.58	-5.37	
6,493.0	34.60	273.90	6,422.6	411.4	388.0	-366.9	12.69	9.59	-17.69	
6,589.0	47.80	273.70	6,494.6	415.5	325.1	-303.8	13.75	13.75	-0.21	
6,685.0	50.10	271.80	6,557.7	419.0	252.8	-231.5	2.82	2.40	-1.98	
6,781.0	58.70	267.60	6,613.5	418.4	174.8	-153.6	9.64	8.96	-4.38	
6,876.0	62.10	266.30	6,660.5	414.0	92.4	-71.5	3.77	3.58	-1.37	
6,910.0	65.15	266.37	6,675.6	412.1	62.0	-41.2	8.96	8.96	0.22	
TPZ - 460' Setback - 1578'FSL & 460'FEL, SEC.4										
6,972.0	70.70	266.50	6,698.8	408.5	4.6	15.8	8.96	8.96	0.20	
7,068.0	79.30	269.50	6,723.7	405.3	-87.9	108.1	9.45	8.96	3.13	
7,163.0	82.30	269.30	6,738.9	404.3	-181.7	201.7	3.16	3.16	-0.21	
7,196.9	85.37	269.62	6,742.5	404.0	-215.4	235.4	9.11	9.06	0.94	
LPL 1536'FSL, 735'FEL, SEC.4										
7,259.0	91.00	270.20	6,744.5	403.9	-277.4	297.3	9.11	9.06	0.93	
7,355.0	89.70	269.50	6,743.9	403.7	-373.4	393.2	1.54	-1.35	-0.73	
7,451.0	89.20	269.00	6,744.8	402.4	-469.4	489.0	0.74	-0.52	-0.52	
7,546.0	89.60	268.60	6,745.8	400.4	-564.4	583.8	0.60	0.42	-0.42	
7,642.0	89.40	267.90	6,746.6	397.5	-660.3	679.4	0.76	-0.21	-0.73	
7,738.0	89.10	267.20	6,747.9	393.4	-756.2	775.0	0.79	-0.31	-0.73	
7,834.0	89.70	268.80	6,748.9	390.0	-852.2	870.7	1.78	0.63	1.67	
7,930.0	89.80	268.60	6,749.3	387.8	-948.2	966.4	0.23	0.10	-0.21	
8,025.0	90.10	268.30	6,749.4	385.3	-1,043.1	1,061.1	0.45	0.32	-0.32	
8,121.0	89.80	269.80	6,749.5	383.7	-1,139.1	1,156.9	1.59	-0.31	1.56	
8,217.0	89.80	268.80	6,749.8	382.5	-1,235.1	1,252.7	1.04	0.00	-1.04	
8,312.0	90.00	268.10	6,750.0	379.9	-1,330.1	1,347.4	0.77	0.21	-0.74	
8,407.0	90.30	269.80	6,749.7	378.2	-1,425.0	1,442.2	1.82	0.32	1.79	

Company:	PDC Energy Inc. DJ Basin	Local Co-ordinate Reference:	Well McGlothlin Farms 4X-314
Project:	SEC.4-T5N-R64W	TVD Reference:	WELL @ 4639.0ft (Ensign Rig #161 - RKB - 23')
Site:	McGlothlin Farms 5N64W4DX Pad Sec.4-T5N-R64W	MD Reference:	WELL @ 4639.0ft (Ensign Rig #161 - RKB - 23')
Well:	McGlothlin Farms 4X-314	North Reference:	True
Wellbore:	McGlothlin Farms 4X-314 Wellbore #1	Survey Calculation Method:	Minimum Curvature
Design:	McGlothlin Farms 4X-314 Wellbore #1	Database:	US_EDM

Survey									
Measured Depth (ft)	Inclination (°)	Azimuth (°)	Vertical Depth (ft)	+N/-S (ft)	+E/-W (ft)	Vertical Section (ft)	Dogleg Rate (°/100usft)	Build Rate (°/100usft)	Turn Rate (°/100usft)
8,503.0	90.10	268.80	6,749.4	377.0	-1,521.0	1,538.0	1.06	-0.21	-1.04
8,599.0	90.00	270.70	6,749.3	376.6	-1,617.0	1,633.9	1.98	-0.10	1.98
8,695.0	90.20	270.20	6,749.2	377.4	-1,713.0	1,729.8	0.56	0.21	-0.52
8,790.0	89.80	269.50	6,749.2	377.1	-1,808.0	1,824.7	0.85	-0.42	-0.74
8,886.0	89.50	269.10	6,749.7	375.9	-1,904.0	1,920.5	0.52	-0.31	-0.42
8,981.0	89.50	268.60	6,750.6	374.0	-1,999.0	2,015.2	0.53	0.00	-0.53
9,077.0	90.50	269.80	6,750.6	372.7	-2,095.0	2,111.0	1.63	1.04	1.25
Deepest TVD Drilled - 6750.57' TVD									
9,173.0	90.70	268.80	6,749.6	371.5	-2,191.0	2,206.8	1.06	0.21	-1.04
9,269.0	90.90	268.10	6,748.2	368.9	-2,286.9	2,302.5	0.76	0.21	-0.73
9,365.0	90.80	269.70	6,746.8	367.1	-2,382.9	2,398.3	1.67	-0.10	1.67
9,461.0	90.70	268.60	6,745.5	365.7	-2,478.9	2,494.1	1.15	-0.10	-1.15
9,557.0	90.80	271.30	6,744.3	365.6	-2,574.8	2,589.9	2.81	0.10	2.81
9,653.0	90.70	270.40	6,743.0	367.0	-2,670.8	2,685.9	0.94	-0.10	-0.94
9,748.0	91.50	272.50	6,741.2	369.4	-2,765.8	2,780.8	2.37	0.84	2.21
9,844.0	91.70	271.60	6,738.5	372.8	-2,861.7	2,876.8	0.96	0.21	-0.94
9,940.0	91.50	271.30	6,735.8	375.3	-2,957.6	2,972.7	0.38	-0.21	-0.31
10,035.0	90.10	270.50	6,734.5	376.8	-3,052.6	3,067.6	1.70	-1.47	-0.84
10,131.0	90.10	270.20	6,734.3	377.3	-3,148.6	3,163.5	0.31	0.00	-0.31
10,227.0	89.20	269.70	6,734.9	377.3	-3,244.6	3,259.4	1.07	-0.94	-0.52
10,322.0	89.00	268.40	6,736.4	375.7	-3,339.5	3,354.2	1.38	-0.21	-1.37
10,418.0	89.10	267.90	6,738.0	372.6	-3,435.5	3,449.8	0.53	0.10	-0.52
10,513.0	89.60	270.20	6,739.1	371.0	-3,530.5	3,544.6	2.48	0.53	2.42
10,609.0	90.40	269.70	6,739.1	370.9	-3,626.5	3,640.5	0.98	0.83	-0.52
10,704.0	88.70	270.90	6,739.8	371.4	-3,721.4	3,735.4	2.19	-1.79	1.26
10,800.0	89.20	270.00	6,741.6	372.2	-3,817.4	3,831.3	1.07	0.52	-0.94
10,896.0	90.30	269.10	6,742.0	371.4	-3,913.4	3,927.1	1.48	1.15	-0.94
10,991.0	88.70	270.50	6,742.8	371.1	-4,008.4	4,022.0	2.24	-1.68	1.47
11,087.0	89.20	269.80	6,744.6	371.3	-4,104.4	4,117.9	0.90	0.52	-0.73
11,183.0	89.50	269.30	6,745.7	370.6	-4,200.4	4,213.7	0.61	0.31	-0.52
11,279.0	89.60	269.10	6,746.5	369.2	-4,296.4	4,309.5	0.23	0.10	-0.21
11,375.0	89.70	269.10	6,747.0	367.7	-4,392.4	4,405.3	0.10	0.10	0.00
11,470.0	90.00	268.40	6,747.3	365.7	-4,487.3	4,500.0	0.80	0.32	-0.74
11,566.0	90.80	268.10	6,746.6	362.7	-4,583.3	4,595.7	0.89	0.83	-0.31
11,662.0	89.70	270.20	6,746.2	361.3	-4,679.3	4,691.5	2.47	-1.15	2.19
11,758.0	90.40	269.30	6,746.1	360.9	-4,775.3	4,787.4	1.19	0.73	-0.94
11,853.0	89.60	271.60	6,746.1	361.6	-4,870.3	4,882.3	2.56	-0.84	2.42
11,949.0	89.80	270.50	6,746.6	363.4	-4,966.2	4,978.2	1.16	0.21	-1.15
12,045.0	89.90	269.80	6,746.9	363.7	-5,062.2	5,074.1	0.74	0.10	-0.73
12,140.0	90.40	271.80	6,746.6	365.0	-5,157.2	5,169.0	2.17	0.53	2.11
12,236.0	90.70	270.70	6,745.7	367.1	-5,253.2	5,265.0	1.19	0.31	-1.15
12,332.0	89.90	271.10	6,745.2	368.6	-5,349.2	5,360.9	0.93	-0.83	0.42
12,427.0	89.60	270.40	6,745.6	369.8	-5,444.2	5,455.9	0.80	-0.32	-0.74

Company:	PDC Energy Inc. DJ Basin	Local Co-ordinate Reference:	Well McGlothlin Farms 4X-314
Project:	SEC.4-T5N-R64W	TVD Reference:	WELL @ 4639.0ft (Ensign Rig #161 - RKB - 23')
Site:	McGlothlin Farms 5N64W4DX Pad Sec.4-T5N-R64W	MD Reference:	WELL @ 4639.0ft (Ensign Rig #161 - RKB - 23')
Well:	McGlothlin Farms 4X-314	North Reference:	True
Wellbore:	McGlothlin Farms 4X-314 Wellbore #1	Survey Calculation Method:	Minimum Curvature
Design:	McGlothlin Farms 4X-314 Wellbore #1	Database:	US_EDM

Measured Depth (ft)	Inclination (°)	Azimuth (°)	Vertical Depth (ft)	+N/-S (ft)	+E/-W (ft)	Vertical Section (ft)	Dogleg Rate (°/100usft)	Build Rate (°/100usft)	Turn Rate (°/100usft)	
12,523.0	90.40	269.10	6,745.6	369.4	-5,540.2	5,551.7	1.59	0.83	-1.35	
12,619.0	89.80	270.70	6,745.4	369.2	-5,636.2	5,647.6	1.78	-0.63	1.67	
12,715.0	89.80	271.30	6,745.8	370.9	-5,732.1	5,743.5	0.62	0.00	0.63	
12,810.0	89.80	270.50	6,746.1	372.4	-5,827.1	5,838.5	0.84	0.00	-0.84	
12,907.0	89.90	269.30	6,746.4	372.2	-5,924.1	5,935.3	1.24	0.10	-1.24	
13,002.0	90.80	271.10	6,745.8	372.6	-6,019.1	6,030.2	2.12	0.95	1.89	
13,098.0	91.50	270.20	6,743.9	373.7	-6,115.1	6,126.1	1.19	0.73	-0.94	
13,194.0	92.20	269.70	6,740.8	373.6	-6,211.0	6,222.0	0.90	0.73	-0.52	
13,290.0	91.10	269.80	6,738.0	373.2	-6,307.0	6,317.8	1.15	-1.15	0.10	
13,386.0	89.90	270.20	6,737.2	373.2	-6,403.0	6,413.7	1.32	-1.25	0.42	
13,481.0	88.50	269.30	6,738.5	372.7	-6,498.0	6,508.5	1.75	-1.47	-0.95	
13,578.0	88.60	268.60	6,740.9	371.0	-6,594.9	6,605.2	0.73	0.10	-0.72	
13,674.0	89.70	270.00	6,742.4	369.8	-6,690.9	6,701.0	1.85	1.15	1.46	
13,769.0	90.40	269.50	6,742.3	369.4	-6,785.9	6,795.9	0.91	0.74	-0.53	
13,865.0	91.20	268.80	6,740.9	368.0	-6,881.9	6,891.7	1.11	0.83	-0.73	
13,960.0	89.30	269.10	6,740.5	366.2	-6,976.9	6,986.5	2.02	-2.00	0.32	
14,056.0	89.60	268.40	6,741.4	364.1	-7,072.8	7,082.2	0.79	0.31	-0.73	
14,152.0	89.50	267.20	6,742.2	360.4	-7,168.8	7,177.8	1.25	-0.10	-1.25	
14,247.0	89.80	267.40	6,742.8	356.0	-7,263.7	7,272.4	0.38	0.32	0.21	
14,303.0	89.70	266.70	6,743.0	353.1	-7,319.6	7,328.1	1.26	-0.18	-1.25	
14,363.0	89.70	266.70	6,743.3	349.6	-7,379.5	7,387.7	0.00	0.00	0.00	
BHL 1560'FSL, 2624'FEL, SEC.5										

Target Name	Dip Angle (°)	Dip Dir. (°)	TVD (ft)	+N/-S (ft)	+E/-W (ft)	Northing (usft)	Easting (usft)	Latitude	Longitude
SHL 1166'FSL, 522'FEL, - hit/miss target - Shape - Point	0.00	0.00	1.0	0.0	0.0	1,398,798.10	3,265,148.77	40.424194	-104.547617
BHL 1560'FSL, 2624'FEL, - survey misses target center by 21.4ft at 14363.0ft MD (6743.3 TVD, 349.6 N, -7379.5 E) - Point	0.00	0.00	6,739.0	370.5	-7,380.9	1,399,089.31	3,257,764.65	40.425208	-104.574127

Measured Depth (ft)	Vertical Depth (ft)	Local Coordinates +N/-S (ft)	+E/-W (ft)	Comment
6,910.0	6,675.6	412.1	62.0	TPZ - 460' Setback - 1578'FSL & 460'FEL, SEC.4
9,077.0	6,750.6	372.7	-2,095.0	Deepest TVD Drilled - 6750.57' TVD

Checked By: _____ Approved By: _____ Date: _____