

PDC Energy Inc. DJ Basin

Well Name: **McGlothlin Farms 4Y-314**

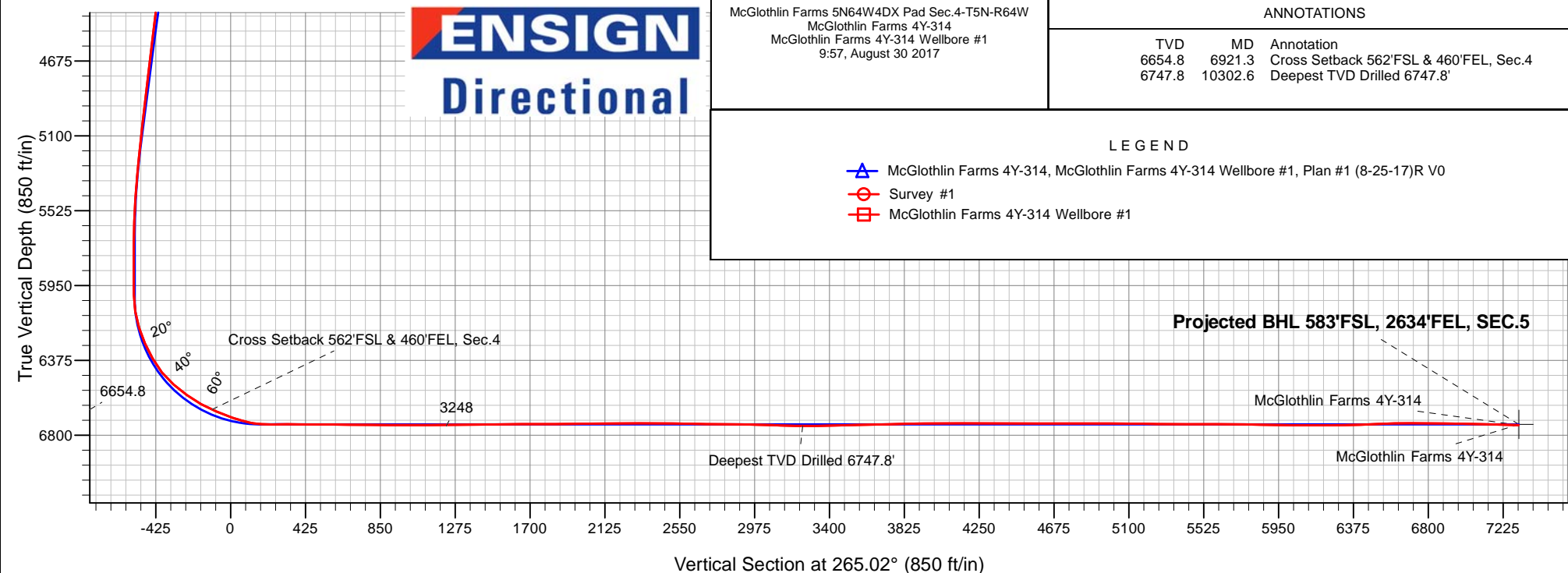
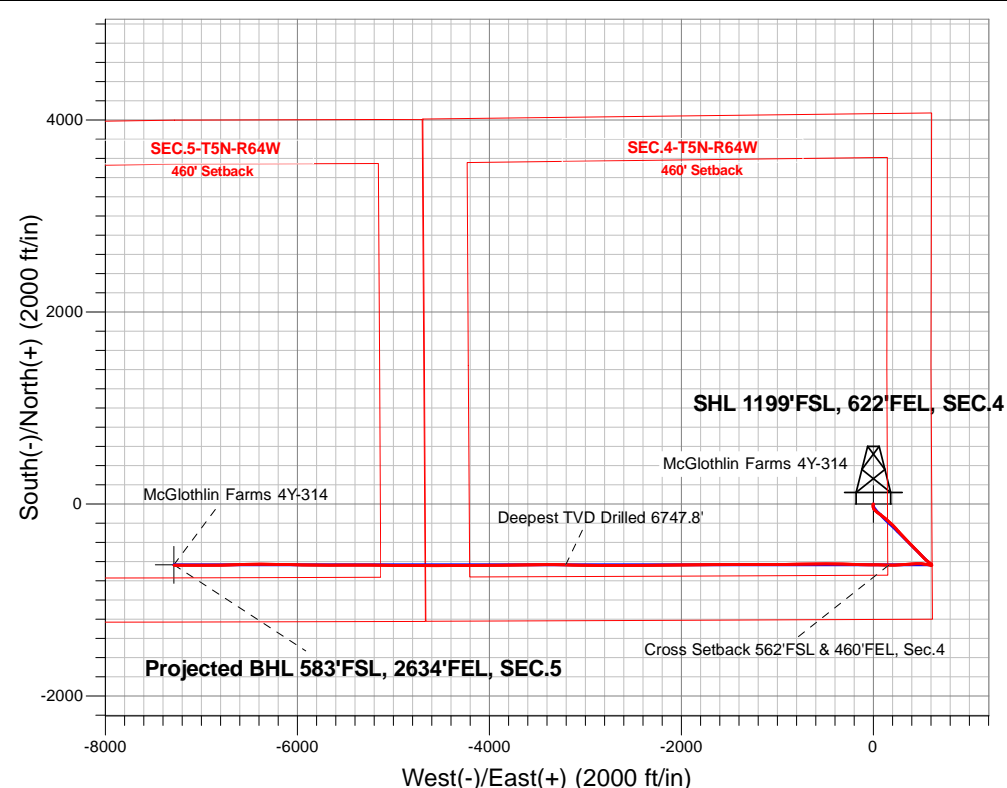
Surface Location: McGlothlin Farms 5N64W4DX Pad Sec.4-T5N-R64W
North American Datum 1983 , US State Plane 1983, Colorado Northern Zone

Ground Elevation: 4616.0

+N/-S+E/-W Northing Easting Latitude Longitude Slot
0.0 0.0 1398829.813265048.75 40.424284 -104.547975
Ensign Rig #161 - RKB - 23'WELL @ 4639.0ft (Ensign Rig #161 - RKB - 23')

FINAL SURVEY

Projected Bottom Hole Location
14,383'MD 6743'TVD 639'S & 7285'W of SHL
88.5 degree Incl @ 269.5 degree AZM





PDC Energy Inc. DJ Basin

SEC.4-T5N-R64W

McGlothlin Farms 5N64W4DX Pad Sec.4-T5N-R64W

McGlothlin Farms 4Y-314

McGlothlin Farms 4Y-314 Wellbore #1

Survey: Survey #1

Standard Survey Report

30 August, 2017

Company:	PDC Energy Inc. DJ Basin	Local Co-ordinate Reference:	Well McGlothlin Farms 4Y-314
Project:	SEC.4-T5N-R64W	TVD Reference:	WELL @ 4639.0ft (Ensign Rig #161 - RKB - 23')
Site:	McGlothlin Farms 5N64W4DX Pad Sec.4-T5N-R64W	MD Reference:	WELL @ 4639.0ft (Ensign Rig #161 - RKB - 23')
Well:	McGlothlin Farms 4Y-314	North Reference:	True
Wellbore:	McGlothlin Farms 4Y-314 Wellbore #1	Survey Calculation Method:	Minimum Curvature
Design:	McGlothlin Farms 4Y-314 Wellbore #1	Database:	US_EDM

Project	SEC.4-T5N-R64W, Weld County, Colorado		
Map System:	US State Plane 1983	System Datum:	Mean Sea Level
Geo Datum:	North American Datum 1983		Using Well Reference Point
Map Zone:	Colorado Northern Zone		Using geodetic scale factor

Site		McGlothlin Farms 5N64W4DX Pad Sec.4-T5N-R64W			
Site Position:		Northing:	1,398,838.61 usft	Latitude:	40.424309
From:	Lat/Long	Easting:	3,265,019.98 usft	Longitude:	-104.548078
Position Uncertainty:	0.0 ft	Slot Radius:	13-3/16 "	Grid Convergence:	0.62 °

Well	McGlothlin Farms 4Y-314					
Well Position	+N/-S	0.0 ft	Northing:	1,398,829.81 usft	Latitude:	40.424284
	+E/-W	0.0 ft	Easting:	3,265,048.76 usft	Longitude:	-104.547975
Position Uncertainty		0.0 ft	Wellhead Elevation:	0.0 ft	Ground Level:	4,616.0 ft

Wellbore	McGlothlin Farms 4Y-314 Wellbore #1				
Magnetics	Model Name	Sample Date	Declination (°)	Dip Angle (°)	Field Strength (nT)
	IGRF2010	8/21/2017	7.91	66.89	52,516

Design	McGlothlin Farms 4Y-314 Wellbore #1				
Audit Notes:					
Version:	1.0	Phase:	ACTUAL	Tie On Depth:	0.0
Vertical Section:	Depth From (TVD) (ft)	+N/-S (ft)	+E/-W (ft)	Direction (°)	
	0.0	0.0	0.0	265.02	

Survey Program	Date	8/30/2017			
From (ft)	To (ft)	Survey (Wellbore)	Tool Name	Description	
156.0	14,383.0	Survey #1 (McGlothlin Farms 4Y-314 Well	MWD	MWD - Standard	

Survey										
Measured Depth (ft)	Inclination (°)	Azimuth (°)	Vertical Depth (ft)	+N/-S (ft)	+E/-W (ft)	Vertical Section (ft)	Dogleg Rate (°/100usft)	Build Rate (°/100usft)	Turn Rate (°/100usft)	
0.0	0.00	0.00	0.0	0.0	0.0	0.0	0.00	0.00	0.00	
156.0	0.40	191.10	156.0	-0.5	-0.1	0.2	0.26	0.26	0.00	
252.0	0.50	216.00	252.0	-1.2	-0.4	0.5	0.23	0.10	25.94	
347.0	0.40	213.00	347.0	-1.8	-0.8	1.0	0.11	-0.11	-3.16	
443.0	0.40	211.80	443.0	-2.4	-1.2	1.4	0.01	0.00	-1.25	
539.0	0.40	213.90	539.0	-2.9	-1.6	1.8	0.02	0.00	2.19	
634.0	1.80	193.70	634.0	-4.7	-2.1	2.5	1.51	1.47	-21.26	
730.0	2.80	187.40	729.9	-8.5	-2.8	3.5	1.07	1.04	-6.56	
825.0	4.70	187.40	824.7	-14.6	-3.6	4.8	2.00	2.00	0.00	
921.0	6.00	175.30	920.3	-23.5	-3.7	5.7	1.79	1.35	-12.60	

Company:	PDC Energy Inc. DJ Basin	Local Co-ordinate Reference:	Well McGlothlin Farms 4Y-314
Project:	SEC.4-T5N-R64W	TVD Reference:	WELL @ 4639.0ft (Ensign Rig #161 - RKB - 23')
Site:	McGlothlin Farms 5N64W4DX Pad Sec.4-T5N-R64W	MD Reference:	WELL @ 4639.0ft (Ensign Rig #161 - RKB - 23')
Well:	McGlothlin Farms 4Y-314	North Reference:	True
Wellbore:	McGlothlin Farms 4Y-314 Wellbore #1	Survey Calculation Method:	Minimum Curvature
Design:	McGlothlin Farms 4Y-314 Wellbore #1	Database:	US_EDM

Survey									
Measured Depth (ft)	Inclination (°)	Azimuth (°)	Vertical Depth (ft)	+N/-S (ft)	+E/-W (ft)	Vertical Section (ft)	Dogleg Rate (°/100usft)	Build Rate (°/100usft)	Turn Rate (°/100usft)
1,016.0	6.40	170.20	1,014.7	-33.7	-2.3	5.3	0.72	0.42	-5.37
1,112.0	7.40	158.20	1,110.0	-44.7	0.9	3.0	1.82	1.04	-12.50
1,208.0	8.10	144.70	1,205.1	-56.0	7.1	-2.2	2.03	0.73	-14.06
1,304.0	8.90	135.70	1,300.1	-66.8	16.2	-10.3	1.61	0.83	-9.38
1,400.0	9.40	131.80	1,394.9	-77.3	27.2	-20.4	0.83	0.52	-4.06
1,496.0	10.00	127.30	1,489.5	-87.6	39.7	-31.9	1.01	0.63	-4.69
1,591.0	10.80	124.10	1,582.9	-97.6	53.6	-44.9	1.04	0.84	-3.37
1,683.0	9.80	122.90	1,673.5	-106.7	67.3	-57.8	1.11	-1.09	-1.30
1,778.0	11.00	129.00	1,766.9	-116.8	81.1	-70.7	1.71	1.26	6.42
1,874.0	11.80	130.10	1,861.0	-128.9	95.8	-84.2	0.86	0.83	1.15
1,969.0	11.50	130.30	1,954.0	-141.3	110.4	-97.7	0.32	-0.32	0.21
2,065.0	11.30	127.10	2,048.2	-153.1	125.2	-111.4	0.69	-0.21	-3.33
2,160.0	11.10	133.40	2,141.4	-165.0	139.3	-124.4	1.30	-0.21	6.63
2,256.0	11.20	132.40	2,235.5	-177.7	152.9	-136.9	0.23	0.10	-1.04
2,352.0	12.60	130.80	2,329.5	-190.8	167.7	-150.5	1.50	1.46	-1.67
2,447.0	12.10	129.40	2,422.3	-203.9	183.2	-164.8	0.61	-0.53	-1.47
2,543.0	12.30	136.80	2,516.1	-217.7	198.0	-178.4	1.64	0.21	7.71
2,638.0	11.80	134.80	2,609.0	-231.9	211.8	-190.9	0.69	-0.53	-2.11
2,733.0	13.10	138.90	2,701.8	-246.9	225.8	-203.5	1.65	1.37	4.32
2,829.0	12.70	138.00	2,795.4	-262.9	240.0	-216.3	0.47	-0.42	-0.94
2,924.0	12.40	136.90	2,888.1	-278.1	254.0	-228.9	0.40	-0.32	-1.16
3,020.0	11.30	135.90	2,982.0	-292.4	267.6	-241.1	1.17	-1.15	-1.04
3,116.0	12.10	137.10	3,076.1	-306.5	281.0	-253.3	0.87	0.83	1.25
3,212.0	11.40	136.10	3,170.0	-320.8	294.4	-265.4	0.76	-0.73	-1.04
3,308.0	11.20	138.90	3,264.2	-334.6	307.1	-276.9	0.61	-0.21	2.92
3,403.0	12.40	140.10	3,357.2	-349.4	319.7	-288.1	1.29	1.26	1.26
3,499.0	12.00	137.80	3,451.0	-364.7	333.0	-300.1	0.66	-0.42	-2.40
3,595.0	12.00	136.80	3,544.9	-379.4	346.6	-312.3	0.22	0.00	-1.04
3,690.0	12.00	135.70	3,637.8	-393.6	360.2	-324.7	0.24	0.00	-1.16
3,786.0	12.10	135.20	3,731.7	-407.9	374.3	-337.4	0.15	0.10	-0.52
3,882.0	11.90	134.80	3,825.6	-422.0	388.4	-350.3	0.23	-0.21	-0.42
3,978.0	10.70	133.10	3,919.8	-435.1	401.9	-362.6	1.30	-1.25	-1.77
4,074.0	12.40	135.40	4,013.8	-448.5	415.7	-375.1	1.83	1.77	2.40
4,169.0	12.30	136.60	4,106.6	-463.1	429.8	-387.9	0.29	-0.11	1.26
4,265.0	11.80	135.50	4,200.5	-477.6	443.7	-400.5	0.57	-0.52	-1.15
4,361.0	11.30	136.20	4,294.5	-491.4	457.1	-412.7	0.54	-0.52	0.73
4,457.0	11.20	135.90	4,388.7	-504.8	470.1	-424.4	0.12	-0.10	-0.31
4,553.0	11.00	136.80	4,482.9	-518.2	482.8	-436.0	0.28	-0.21	0.94
4,648.0	10.40	136.10	4,576.3	-531.0	495.0	-447.0	0.65	-0.63	-0.74
4,744.0	10.00	136.10	4,670.7	-543.2	506.8	-457.7	0.42	-0.42	0.00
4,840.0	10.60	134.80	4,765.2	-555.5	518.8	-468.6	0.67	0.63	-1.35
4,936.0	10.30	132.50	4,859.6	-567.5	531.4	-480.1	0.54	-0.31	-2.40

Company:	PDC Energy Inc. DJ Basin	Local Co-ordinate Reference:	Well McGlothlin Farms 4Y-314
Project:	SEC.4-T5N-R64W	TVD Reference:	WELL @ 4639.0ft (Ensign Rig #161 - RKB - 23')
Site:	McGlothlin Farms 5N64W4DX Pad Sec.4-T5N-R64W	MD Reference:	WELL @ 4639.0ft (Ensign Rig #161 - RKB - 23')
Well:	McGlothlin Farms 4Y-314	North Reference:	True
Wellbore:	McGlothlin Farms 4Y-314 Wellbore #1	Survey Calculation Method:	Minimum Curvature
Design:	McGlothlin Farms 4Y-314 Wellbore #1	Database:	US_EDM

Survey									
Measured Depth (ft)	Inclination (°)	Azimuth (°)	Vertical Depth (ft)	+N/-S (ft)	+E/-W (ft)	Vertical Section (ft)	Dogleg Rate (°/100usft)	Build Rate (°/100usft)	Turn Rate (°/100usft)
5,032.0	10.20	132.70	4,954.1	-579.1	544.0	-491.6	0.11	-0.10	0.21
5,127.0	8.60	131.10	5,047.8	-589.4	555.5	-502.2	1.71	-1.68	-1.68
5,223.0	8.20	128.80	5,142.8	-598.4	566.3	-512.1	0.54	-0.42	-2.40
5,319.0	8.00	130.30	5,237.8	-607.0	576.7	-521.8	0.30	-0.21	1.56
5,415.0	7.40	127.60	5,332.9	-615.1	586.7	-531.0	0.73	-0.63	-2.81
5,511.0	5.00	131.80	5,428.4	-621.7	594.7	-538.4	2.54	-2.50	4.38
5,607.0	4.70	132.70	5,524.0	-627.2	600.7	-544.0	0.32	-0.31	0.94
5,702.0	3.80	140.80	5,618.8	-632.2	605.6	-548.3	1.14	-0.95	8.53
5,798.0	1.80	165.60	5,714.6	-636.2	607.9	-550.4	2.39	-2.08	25.83
5,894.0	0.50	174.60	5,810.6	-638.0	608.4	-550.6	1.36	-1.35	9.38
5,989.0	0.50	199.00	5,905.6	-638.8	608.3	-550.5	0.22	0.00	25.68
6,085.0	0.60	213.40	6,001.6	-639.7	607.8	-550.0	0.18	0.10	15.00
6,181.0	9.70	276.90	6,097.1	-639.1	599.5	-541.7	9.84	9.48	66.15
6,277.0	17.90	282.70	6,190.3	-634.9	577.1	-519.7	8.65	8.54	6.04
6,372.0	23.90	277.00	6,279.0	-629.3	543.7	-487.0	6.66	6.32	-6.00
6,468.0	31.00	277.20	6,364.2	-623.8	499.8	-443.7	7.40	7.40	0.21
6,564.0	37.50	265.60	6,443.5	-623.0	446.0	-390.2	9.57	6.77	-12.08
6,660.0	50.10	266.30	6,512.7	-627.6	379.9	-323.9	13.13	13.13	0.73
6,756.0	53.50	265.80	6,572.1	-632.8	304.6	-248.5	3.57	3.54	-0.52
6,852.0	61.30	268.80	6,623.7	-636.5	223.9	-167.8	8.54	8.13	3.13
6,921.3	65.53	270.35	6,654.8	-637.0	162.0	-106.0	6.42	6.10	2.24
Cross Setback 562'FSL & 460'FEL, Sec.4									
6,947.0	67.10	270.90	6,665.1	-636.7	138.4	-82.6	6.42	6.12	2.13
7,043.0	70.90	270.70	6,699.5	-635.5	48.8	6.6	3.96	3.96	-0.21
7,139.0	76.70	269.50	6,726.2	-635.3	-43.3	98.3	6.16	6.04	-1.25
7,235.0	89.50	272.50	6,737.8	-633.6	-138.4	192.9	13.69	13.33	3.13
7,330.0	89.40	272.30	6,738.7	-629.7	-233.3	287.1	0.24	-0.11	-0.21
7,426.0	90.00	270.90	6,739.2	-627.0	-329.3	382.5	1.59	0.63	-1.46
7,522.0	89.80	270.70	6,739.3	-625.6	-425.3	478.0	0.29	-0.21	-0.21
7,618.0	89.80	270.20	6,739.7	-624.9	-521.3	573.6	0.52	0.00	-0.52
7,713.0	89.50	269.60	6,740.3	-625.1	-616.3	668.2	0.71	-0.32	-0.63
7,838.0	89.30	268.90	6,741.6	-626.7	-741.2	792.9	0.58	-0.16	-0.56
7,934.0	89.70	268.10	6,742.4	-629.2	-837.2	888.7	0.93	0.42	-0.83
8,029.0	89.20	269.60	6,743.3	-631.1	-932.2	983.5	1.66	-0.53	1.58
8,125.0	90.70	270.20	6,743.4	-631.3	-1,028.2	1,079.1	1.68	1.56	0.63
8,221.0	90.40	269.30	6,742.5	-631.7	-1,124.2	1,174.8	0.99	-0.31	-0.94
8,316.0	90.70	271.10	6,741.6	-631.4	-1,219.2	1,269.4	1.92	0.32	1.89
8,412.0	90.70	270.40	6,740.4	-630.1	-1,315.1	1,364.9	0.73	0.00	-0.73
8,507.0	90.70	270.20	6,739.2	-629.6	-1,410.1	1,459.5	0.21	0.00	-0.21
8,603.0	90.60	269.80	6,738.1	-629.6	-1,506.1	1,555.1	0.43	-0.10	-0.42
8,699.0	90.40	269.60	6,737.3	-630.1	-1,602.1	1,650.8	0.29	-0.21	-0.21
8,794.0	90.00	269.10	6,737.0	-631.2	-1,697.1	1,745.5	0.67	-0.42	-0.53
8,890.0	90.20	268.60	6,736.8	-633.1	-1,793.1	1,841.3	0.56	0.21	-0.52

Company:	PDC Energy Inc. DJ Basin	Local Co-ordinate Reference:	Well McGlothlin Farms 4Y-314
Project:	SEC.4-T5N-R64W	TVD Reference:	WELL @ 4639.0ft (Ensign Rig #161 - RKB - 23')
Site:	McGlothlin Farms 5N64W4DX Pad Sec.4-T5N-R64W	MD Reference:	WELL @ 4639.0ft (Ensign Rig #161 - RKB - 23')
Well:	McGlothlin Farms 4Y-314	North Reference:	True
Wellbore:	McGlothlin Farms 4Y-314 Wellbore #1	Survey Calculation Method:	Minimum Curvature
Design:	McGlothlin Farms 4Y-314 Wellbore #1	Database:	US_EDM

Survey									
Measured Depth (ft)	Inclination (°)	Azimuth (°)	Vertical Depth (ft)	+N/-S (ft)	+E/-W (ft)	Vertical Section (ft)	Dogleg Rate (°/100usft)	Build Rate (°/100usft)	Turn Rate (°/100usft)
8,986.0	91.10	268.10	6,735.7	-635.9	-1,889.0	1,937.1	1.07	0.94	-0.52
9,081.0	89.70	269.50	6,735.1	-637.9	-1,984.0	2,031.9	2.08	-1.47	1.47
9,177.0	90.80	268.90	6,734.6	-639.2	-2,080.0	2,127.7	1.31	1.15	-0.63
9,273.0	90.90	269.80	6,733.2	-640.3	-2,176.0	2,223.4	0.94	0.10	0.94
9,369.0	90.20	269.80	6,732.3	-640.6	-2,272.0	2,319.0	0.73	-0.73	0.00
9,465.0	89.00	270.90	6,733.0	-640.0	-2,368.0	2,414.6	1.70	-1.25	1.15
9,561.0	89.50	270.40	6,734.2	-639.0	-2,464.0	2,510.1	0.74	0.52	-0.52
9,657.0	89.20	270.00	6,735.3	-638.6	-2,560.0	2,605.8	0.52	-0.31	-0.42
9,753.0	89.00	270.20	6,736.8	-638.5	-2,655.9	2,701.4	0.29	-0.21	0.21
9,848.0	89.40	269.50	6,738.1	-638.7	-2,750.9	2,796.0	0.85	0.42	-0.74
9,944.0	89.80	268.80	6,738.8	-640.1	-2,846.9	2,891.8	0.84	0.42	-0.73
10,039.0	88.70	270.20	6,740.1	-641.0	-2,941.9	2,986.5	1.87	-1.16	1.47
10,135.0	87.90	271.60	6,742.9	-639.5	-3,037.8	3,081.9	1.68	-0.83	1.46
10,231.0	88.00	271.40	6,746.3	-636.9	-3,133.7	3,177.2	0.23	0.10	-0.21
10,302.6	89.66	271.55	6,747.8	-635.1	-3,205.3	3,248.4	2.33	2.32	0.21
Deepest TVD Drilled 6747.8'									
10,326.0	90.20	271.60	6,747.8	-634.5	-3,228.7	3,271.6	2.33	2.32	0.21
10,422.0	91.50	270.20	6,746.4	-632.9	-3,324.7	3,367.1	1.99	1.35	-1.46
10,518.0	91.40	270.00	6,744.0	-632.8	-3,420.6	3,462.7	0.23	-0.10	-0.21
10,613.0	91.10	269.60	6,741.9	-633.1	-3,515.6	3,557.3	0.53	-0.32	-0.42
10,708.0	91.00	269.30	6,740.2	-634.0	-3,610.6	3,652.0	0.33	-0.11	-0.32
10,804.0	91.40	268.80	6,738.2	-635.6	-3,706.6	3,747.8	0.67	0.42	-0.52
10,900.0	91.60	268.10	6,735.6	-638.2	-3,802.5	3,843.6	0.76	0.21	-0.73
10,995.0	90.90	269.80	6,733.6	-639.9	-3,897.5	3,938.3	1.93	-0.74	1.79
11,091.0	90.00	270.20	6,732.8	-639.9	-3,993.4	4,033.9	1.03	-0.94	0.42
11,187.0	90.40	270.00	6,732.5	-639.8	-4,089.4	4,129.6	0.47	0.42	-0.21
11,283.0	89.60	269.80	6,732.5	-639.9	-4,185.4	4,225.2	0.86	-0.83	-0.21
11,379.0	89.70	268.90	6,733.1	-641.0	-4,281.4	4,320.9	0.94	0.10	-0.94
11,475.0	90.00	268.90	6,733.3	-642.9	-4,377.4	4,416.7	0.31	0.31	0.00
11,570.0	90.00	269.50	6,733.3	-644.2	-4,472.4	4,511.5	0.63	0.00	0.63
11,666.0	89.80	270.90	6,733.5	-643.9	-4,568.4	4,607.1	1.47	-0.21	1.46
11,762.0	90.00	270.20	6,733.6	-643.0	-4,664.4	4,702.6	0.76	0.21	-0.73
11,857.0	90.40	269.30	6,733.3	-643.4	-4,759.4	4,797.3	1.04	0.42	-0.95
11,953.0	89.60	270.40	6,733.3	-643.6	-4,855.4	4,892.9	1.42	-0.83	1.15
12,049.0	89.50	271.80	6,734.1	-641.8	-4,951.4	4,988.4	1.46	-0.10	1.46
12,143.0	89.50	271.40	6,734.9	-639.2	-5,045.3	5,081.8	0.43	0.00	-0.43
12,239.0	89.50	270.90	6,735.7	-637.2	-5,141.3	5,177.2	0.52	0.00	-0.52
12,335.0	89.30	270.00	6,736.7	-636.5	-5,237.3	5,272.8	0.96	-0.21	-0.94
12,430.0	89.90	269.10	6,737.4	-637.2	-5,332.3	5,367.5	1.14	0.63	-0.95
12,526.0	89.50	270.50	6,737.9	-637.6	-5,428.3	5,463.1	1.52	-0.42	1.46
12,622.0	90.00	270.50	6,738.3	-636.7	-5,524.3	5,558.7	0.52	0.52	0.00
12,718.0	90.30	268.80	6,738.1	-637.3	-5,620.3	5,654.4	1.80	0.31	-1.77

Company:	PDC Energy Inc. DJ Basin	Local Co-ordinate Reference:	Well McGlothlin Farms 4Y-314
Project:	SEC.4-T5N-R64W	TVD Reference:	WELL @ 4639.0ft (Ensign Rig #161 - RKB - 23')
Site:	McGlothlin Farms 5N64W4DX Pad Sec.4-T5N-R64W	MD Reference:	WELL @ 4639.0ft (Ensign Rig #161 - RKB - 23')
Well:	McGlothlin Farms 4Y-314	North Reference:	True
Wellbore:	McGlothlin Farms 4Y-314 Wellbore #1	Survey Calculation Method:	Minimum Curvature
Design:	McGlothlin Farms 4Y-314 Wellbore #1	Database:	US_EDM

Survey									
Measured Depth (ft)	Inclination (°)	Azimuth (°)	Vertical Depth (ft)	+N/-S (ft)	+E/-W (ft)	Vertical Section (ft)	Dogleg Rate (°/100usft)	Build Rate (°/100usft)	Turn Rate (°/100usft)
12,813.0	89.00	270.50	6,738.6	-637.9	-5,715.3	5,749.1	2.25	-1.37	1.79
12,910.0	88.70	269.80	6,740.6	-637.6	-5,812.2	5,845.7	0.78	-0.31	-0.72
13,005.0	89.10	271.80	6,742.4	-636.3	-5,907.2	5,940.2	2.15	0.42	2.11
13,101.0	89.00	271.10	6,744.0	-633.9	-6,003.2	6,035.5	0.74	-0.10	-0.73
13,197.0	90.70	271.40	6,744.3	-631.8	-6,099.1	6,131.0	1.80	1.77	0.31
13,293.0	89.60	270.20	6,744.0	-630.4	-6,195.1	6,226.5	1.70	-1.15	-1.25
13,389.0	91.20	270.50	6,743.3	-629.8	-6,291.1	6,322.1	1.70	1.67	0.31
13,484.0	92.00	270.00	6,740.7	-629.4	-6,386.1	6,416.6	0.99	0.84	-0.53
13,581.0	92.90	269.60	6,736.5	-629.8	-6,483.0	6,513.2	1.02	0.93	-0.41
13,677.0	91.40	268.90	6,732.9	-631.0	-6,578.9	6,608.9	1.72	-1.56	-0.73
13,772.0	89.60	268.20	6,732.1	-633.4	-6,673.9	6,703.7	2.03	-1.89	-0.74
13,867.0	89.70	267.40	6,732.7	-637.1	-6,768.8	6,798.6	0.85	0.11	-0.84
13,963.0	88.80	269.30	6,733.9	-639.8	-6,864.8	6,894.4	2.19	-0.94	1.98
14,059.0	89.10	270.90	6,735.7	-639.7	-6,960.7	6,990.0	1.70	0.31	1.67
14,155.0	89.10	270.50	6,737.2	-638.5	-7,056.7	7,085.5	0.42	0.00	-0.42
14,250.0	88.50	269.80	6,739.2	-638.3	-7,151.7	7,180.1	0.97	-0.63	-0.74
14,323.0	88.50	269.50	6,741.1	-638.7	-7,224.7	7,252.8	0.41	0.00	-0.41
14,383.0	88.50	269.50	6,742.7	-639.2	-7,284.6	7,312.6	0.00	0.00	0.00

Design Targets									
Target Name	Dip Angle (°)	Dip Dir. (°)	TVD (ft)	+N/-S (ft)	+E/-W (ft)	Northing (usft)	Easting (usft)	Latitude	Longitude
- hit/miss target									
- Shape									
SHL 1199'FSL, 622'FEL, - survey hits target center - Point	0.00	0.00	1.0	0.0	0.0	1,398,829.82	3,265,048.75	40.424284	-104.547975
BHL 587'FSL, 2636'FEL - survey misses target center by 5.7ft at 14383.0ft MD (6742.7 TVD, -639.2 N, -7284.6 E) - Point	0.00	0.00	6,739.0	-635.4	-7,286.8	1,398,116.27	3,257,769.52	40.422537	-104.574146

Survey Annotations				
Measured Depth (ft)	Vertical Depth (ft)	+N/-S (ft)	+E/-W (ft)	Comment
6,921.3	6,654.8	-637.0	162.0	Cross Setback 562'FSL & 460'FEL, Sec.4
10,302.6	6,747.8	-635.1	-3,205.3	Deepest TVD Drilled 6747.8'

Checked By: _____	Approved By: _____	Date: _____
-------------------	--------------------	-------------