

PDC Energy Inc. DJ Basin

Well Name: **McGlothlin Farms 4W-404**

Surface Location: McGlothlin Farms 5N64W4DX Pad Sec.4-T5N-R64W
North American Datum 1983 , US State Plane 1983, Colorado Northern Zone

Ground Elevation: 4616.0

+N/-S+E/-W Northing Easting Latitude Longitude Slot

0.0 0.0 1398816.423265091.50 40.424246 -104.547822

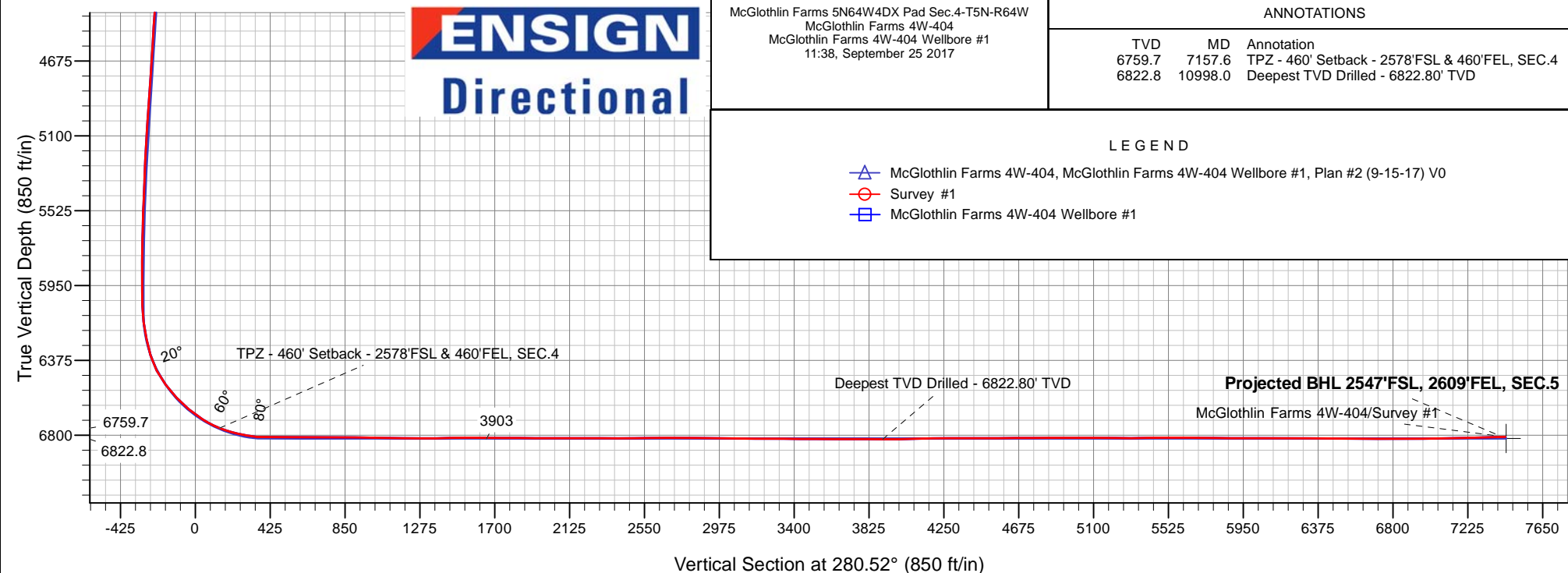
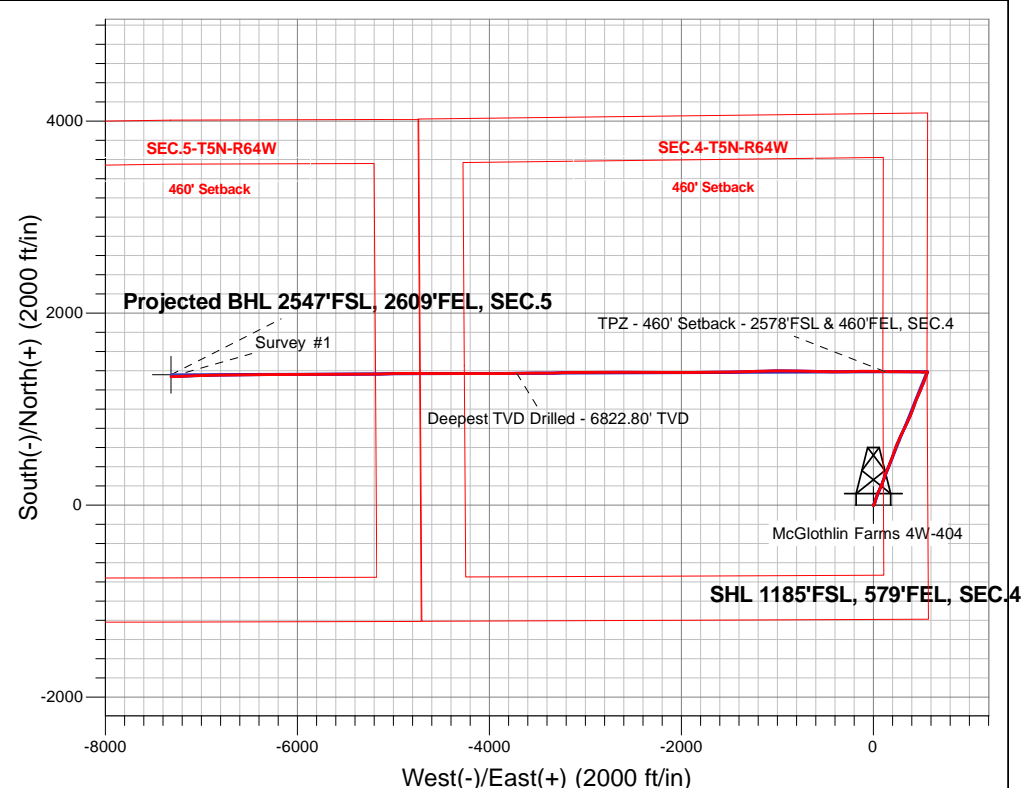
Ensign Rig #161 - RKB - 23'WELL @ 4639.0ft (Ensign Rig #161 - RKB - 23')

FINAL SURVEY

Projected Bottom Hole Location

14,600'MD 6809'TVD 1339'S & 7315'W of SHL

92.0 degree Incl @ 268.2 degree AZM





PDC Energy Inc. DJ Basin

SEC.4-T5N-R64W

McGlothlin Farms 5N64W4DX Pad Sec.4-T5N-R64W

McGlothlin Farms 4W-404

McGlothlin Farms 4W-404 Wellbore #1

Survey: Survey #1

Standard Survey Report

25 September, 2017

Company:	PDC Energy Inc. DJ Basin	Local Co-ordinate Reference:	Well McGlothlin Farms 4W-404
Project:	SEC.4-T5N-R64W	TVD Reference:	WELL @ 4639.0ft (Ensign Rig #161 - RKB - 23')
Site:	McGlothlin Farms 5N64W4DX Pad Sec.4-T5N-R64W	MD Reference:	WELL @ 4639.0ft (Ensign Rig #161 - RKB - 23')
Well:	McGlothlin Farms 4W-404	North Reference:	True
Wellbore:	McGlothlin Farms 4W-404 Wellbore #1	Survey Calculation Method:	Minimum Curvature
Design:	McGlothlin Farms 4W-404 Wellbore #1	Database:	US_EDM

Project	SEC.4-T5N-R64W, Weld County, Colorado		
Map System:	US State Plane 1983	System Datum:	Mean Sea Level
Geo Datum:	North American Datum 1983		Using Well Reference Point
Map Zone:	Colorado Northern Zone		Using geodetic scale factor

Site	McGlothlin Farms 5N64W4DX Pad Sec.4-T5N-R64W				
Site Position:		Northing:	1,398,838.61 usft	Latitude:	40.424309
From:	Lat/Long	Easting:	3,265,019.98 usft	Longitude:	-104.548078
Position Uncertainty:	0.0 ft	Slot Radius:	13-3/16 "	Grid Convergence:	0.62 °

Well	McGlothlin Farms 4W-404					
Well Position	+N/-S	0.0 ft	Northing:	1,398,816.42 usft	Latitude:	40.424246
	+E/-W	0.0 ft	Easting:	3,265,091.50 usft	Longitude:	-104.547822
Position Uncertainty		0.0 ft	Wellhead Elevation:	0.0 ft	Ground Level:	4,616.0 ft

Wellbore	McGlothlin Farms 4W-404 Wellbore #1				
Magnetics	Model Name	Sample Date	Declination (°)	Dip Angle (°)	Field Strength (nT)
	IGRF2010	9/15/2017	7.90	66.88	52,509

Design	McGlothlin Farms 4W-404 Wellbore #1				
Audit Notes:					
Version:	1.0	Phase:	ACTUAL	Tie On Depth:	0.0
Vertical Section:	Depth From (TVD) (ft)	+N/-S (ft)	+E/-W (ft)	Direction (°)	
	0.0	0.0	0.0	280.52	

Survey Program	Date	9/25/2017			
From (ft)	To (ft)	Survey (Wellbore)	Tool Name	Description	
156.0	14,600.0	Survey #1 (McGlothlin Farms 4W-404 We	MWD	MWD - Standard	

Survey										
Measured Depth (ft)	Inclination (°)	Azimuth (°)	Vertical Depth (ft)	+N/-S (ft)	+E/-W (ft)	Vertical Section (ft)	Dogleg Rate (°/100usft)	Build Rate (°/100usft)	Turn Rate (°/100usft)	
0.0	0.00	0.00	0.0	0.0	0.0	0.0	0.00	0.00	0.00	
156.0	0.40	157.50	156.0	-0.5	0.2	-0.3	0.26	0.26	0.00	
252.0	0.80	46.20	252.0	-0.3	0.8	-0.9	1.06	0.42	-115.94	
347.0	2.00	42.00	347.0	1.3	2.4	-2.1	1.27	1.26	-4.42	
443.0	3.60	32.20	442.8	5.1	5.1	-4.1	1.73	1.67	-10.21	
539.0	5.60	30.10	538.5	11.7	9.1	-6.8	2.09	2.08	-2.19	
634.0	8.00	23.00	632.9	21.8	14.0	-9.8	2.67	2.53	-7.47	
730.0	10.50	17.10	727.6	36.4	19.2	-12.2	2.78	2.60	-6.15	
825.0	11.30	11.60	820.9	53.7	23.6	-13.4	1.38	0.84	-5.79	
921.0	10.50	15.50	915.2	71.4	27.8	-14.3	1.13	-0.83	4.06	

Company:	PDC Energy Inc. DJ Basin	Local Co-ordinate Reference:	Well McGlothlin Farms 4W-404
Project:	SEC.4-T5N-R64W	TVD Reference:	WELL @ 4639.0ft (Ensign Rig #161 - RKB - 23')
Site:	McGlothlin Farms 5N64W4DX Pad Sec.4-T5N-R64W	MD Reference:	WELL @ 4639.0ft (Ensign Rig #161 - RKB - 23')
Well:	McGlothlin Farms 4W-404	North Reference:	True
Wellbore:	McGlothlin Farms 4W-404 Wellbore #1	Survey Calculation Method:	Minimum Curvature
Design:	McGlothlin Farms 4W-404 Wellbore #1	Database:	US_EDM

Survey									
Measured Depth (ft)	Inclination (°)	Azimuth (°)	Vertical Depth (ft)	+N/-S (ft)	+E/-W (ft)	Vertical Section (ft)	Dogleg Rate (°/100usft)	Build Rate (°/100usft)	Turn Rate (°/100usft)
1,017.0	12.10	17.70	1,009.3	89.4	33.2	-16.3	1.73	1.67	2.29
1,112.0	13.20	20.90	1,102.0	109.0	40.1	-19.5	1.37	1.16	3.37
1,208.0	14.30	23.00	1,195.2	130.2	48.7	-24.1	1.26	1.15	2.19
1,304.0	16.30	24.40	1,287.8	153.4	58.9	-29.9	2.12	2.08	1.46
1,400.0	18.80	26.00	1,379.4	179.5	71.2	-37.2	2.65	2.60	1.67
1,496.0	19.30	23.70	1,470.1	208.0	84.4	-45.0	0.94	0.52	-2.40
1,606.0	17.60	19.20	1,574.5	240.3	97.1	-51.6	2.02	-1.55	-4.09
1,683.0	16.40	17.90	1,648.1	261.7	104.3	-54.8	1.63	-1.56	-1.69
1,779.0	16.40	16.50	1,740.2	287.5	112.3	-57.9	0.41	0.00	-1.46
1,874.0	17.10	22.00	1,831.2	313.4	121.4	-62.1	1.82	0.74	5.79
1,970.0	17.30	22.50	1,922.9	339.6	132.1	-67.9	0.26	0.21	0.52
2,065.0	19.00	22.70	2,013.1	367.0	143.5	-74.1	1.79	1.79	0.21
2,160.0	18.60	22.10	2,103.1	395.3	155.2	-80.4	0.47	-0.42	-0.63
2,256.0	17.40	20.90	2,194.4	422.9	166.0	-86.1	1.31	-1.25	-1.25
2,352.0	17.50	22.80	2,285.9	449.6	176.8	-91.7	0.60	0.10	1.98
2,448.0	17.10	23.00	2,377.6	475.9	187.9	-97.8	0.42	-0.42	0.21
2,543.0	18.20	21.10	2,468.1	502.6	198.7	-103.6	1.31	1.16	-2.00
2,638.0	17.90	19.50	2,558.5	530.2	208.9	-108.6	0.61	-0.32	-1.68
2,734.0	18.10	18.40	2,649.8	558.2	218.5	-112.9	0.41	0.21	-1.15
2,829.0	17.80	22.30	2,740.1	585.7	228.7	-117.9	1.30	-0.32	4.11
2,925.0	17.40	20.90	2,831.6	612.7	239.4	-123.5	0.61	-0.42	-1.46
3,021.0	17.90	22.00	2,923.1	639.7	250.0	-129.0	0.63	0.52	1.15
3,116.0	17.30	21.10	3,013.7	666.5	260.6	-134.5	0.69	-0.63	-0.95
3,213.0	16.40	20.00	3,106.5	692.8	270.4	-139.4	0.98	-0.93	-1.13
3,306.0	16.40	26.70	3,195.7	716.8	280.8	-145.3	2.03	0.00	7.20
3,404.0	16.20	24.60	3,289.8	741.6	292.7	-152.4	0.64	-0.20	-2.14
3,500.0	16.50	27.40	3,381.9	765.9	304.6	-159.6	0.88	0.31	2.92
3,595.0	17.60	27.60	3,472.7	790.6	317.5	-167.8	1.16	1.16	0.21
3,691.0	17.80	26.90	3,564.2	816.6	330.8	-176.2	0.30	0.21	-0.73
3,787.0	17.90	26.00	3,655.6	842.9	343.9	-184.3	0.31	0.10	-0.94
3,883.0	18.00	25.30	3,746.9	869.6	356.7	-192.0	0.25	0.10	-0.73
3,979.0	17.80	24.40	3,838.3	896.4	369.1	-199.3	0.36	-0.21	-0.94
4,074.0	17.20	24.10	3,928.9	922.4	380.9	-206.1	0.64	-0.63	-0.32
4,170.0	16.20	22.80	4,020.8	947.7	391.9	-212.3	1.11	-1.04	-1.35
4,265.0	16.80	20.90	4,111.9	972.7	401.9	-217.5	0.85	0.63	-2.00
4,361.0	16.00	19.30	4,204.0	998.2	411.2	-222.1	0.96	-0.83	-1.67
4,457.0	17.60	19.70	4,295.9	1,024.4	420.5	-226.4	1.67	1.67	0.42
4,553.0	18.60	20.90	4,387.1	1,052.3	430.8	-231.5	1.11	1.04	1.25
4,649.0	17.60	20.60	4,478.4	1,080.2	441.4	-236.8	1.05	-1.04	-0.31
4,745.0	16.80	21.80	4,570.1	1,106.7	451.7	-242.0	0.91	-0.83	1.25
4,840.0	16.40	22.50	4,661.1	1,131.8	461.9	-247.5	0.47	-0.42	0.74
4,936.0	18.10	23.00	4,752.8	1,158.1	472.9	-253.5	1.78	1.77	0.52

Company:	PDC Energy Inc. DJ Basin	Local Co-ordinate Reference:	Well McGlothlin Farms 4W-404
Project:	SEC.4-T5N-R64W	TVD Reference:	WELL @ 4639.0ft (Ensign Rig #161 - RKB - 23')
Site:	McGlothlin Farms 5N64W4DX Pad Sec.4-T5N-R64W	MD Reference:	WELL @ 4639.0ft (Ensign Rig #161 - RKB - 23')
Well:	McGlothlin Farms 4W-404	North Reference:	True
Wellbore:	McGlothlin Farms 4W-404 Wellbore #1	Survey Calculation Method:	Minimum Curvature
Design:	McGlothlin Farms 4W-404 Wellbore #1	Database:	US_EDM

Survey									
Measured Depth (ft)	Inclination (°)	Azimuth (°)	Vertical Depth (ft)	+N/-S (ft)	+E/-W (ft)	Vertical Section (ft)	Dogleg Rate (°/100usft)	Build Rate (°/100usft)	Turn Rate (°/100usft)
5,032.0	17.20	22.30	4,844.3	1,184.9	484.1	-259.7	0.96	-0.94	-0.73
5,128.0	18.80	23.20	4,935.6	1,212.3	495.6	-266.0	1.69	1.67	0.94
5,223.0	18.20	22.50	5,025.7	1,240.1	507.3	-272.4	0.67	-0.63	-0.74
5,319.0	16.90	21.80	5,117.2	1,266.9	518.2	-278.2	1.37	-1.35	-0.73
5,415.0	15.40	20.00	5,209.4	1,291.8	527.8	-283.1	1.65	-1.56	-1.88
5,511.0	14.00	19.20	5,302.3	1,314.7	535.9	-286.9	1.47	-1.46	-0.83
5,607.0	11.60	23.50	5,395.9	1,334.6	543.6	-290.8	2.69	-2.50	4.48
5,703.0	11.00	22.10	5,490.0	1,351.9	550.9	-294.8	0.69	-0.63	-1.46
5,798.0	8.20	21.60	5,583.7	1,366.6	556.8	-298.0	2.95	-2.95	-0.53
5,894.0	5.80	22.10	5,679.0	1,377.5	561.2	-300.3	2.50	-2.50	0.52
5,990.0	4.00	25.70	5,774.6	1,385.0	564.4	-302.1	1.90	-1.88	3.75
6,086.0	0.70	333.30	5,870.5	1,388.5	565.6	-302.6	3.77	-3.44	-54.58
6,182.0	0.30	317.60	5,966.5	1,389.2	565.2	-302.1	0.44	-0.42	-16.35
6,277.0	0.50	258.20	6,061.5	1,389.3	564.6	-301.5	0.46	0.21	-62.53
6,373.0	8.60	268.40	6,157.1	1,389.0	557.0	-294.1	8.45	8.44	10.63
6,469.0	10.60	265.90	6,251.8	1,388.2	541.0	-278.5	2.13	2.08	-2.60
6,565.0	17.50	270.20	6,344.9	1,387.6	517.8	-255.7	7.26	7.19	4.48
6,661.0	27.50	272.30	6,433.4	1,388.6	481.1	-219.5	10.45	10.42	2.19
6,756.0	37.90	270.50	6,513.3	1,389.7	429.9	-168.9	10.99	10.95	-1.89
6,852.0	42.40	271.40	6,586.6	1,390.8	368.0	-107.9	4.73	4.69	0.94
6,948.0	51.50	270.20	6,652.1	1,391.7	297.9	-38.8	9.52	9.48	-1.25
7,044.0	57.20	269.80	6,708.0	1,391.7	219.9	37.8	5.95	5.94	-0.42
7,139.0	66.70	271.00	6,752.6	1,392.3	136.2	120.3	10.06	10.00	1.26
7,157.6	68.42	271.00	6,759.7	1,392.6	119.0	137.2	9.27	9.27	0.00
TPZ - 460' Setback - 2578'FSL & 460'FEL, SEC.4									
7,235.0	75.60	271.00	6,783.6	1,393.9	45.5	209.8	9.27	9.27	0.00
7,331.0	80.30	270.50	6,803.7	1,395.1	-48.4	302.3	4.92	4.90	-0.52
7,427.0	89.70	268.50	6,812.0	1,394.3	-143.9	396.0	10.01	9.79	-2.08
7,553.0	90.60	269.10	6,811.7	1,391.6	-269.9	519.4	0.86	0.71	0.48
7,649.0	90.60	270.00	6,810.7	1,390.9	-365.9	613.6	0.94	0.00	0.94
7,744.0	89.40	271.20	6,810.7	1,391.9	-460.9	707.2	1.79	-1.26	1.26
7,840.0	88.90	271.20	6,812.1	1,393.9	-556.8	801.9	0.52	-0.52	0.00
7,936.0	89.10	271.20	6,813.8	1,395.9	-652.8	896.7	0.21	0.21	0.00
8,032.0	89.30	270.70	6,815.1	1,397.5	-748.8	991.3	0.56	0.21	-0.52
8,128.0	89.20	270.90	6,816.4	1,398.8	-844.8	1,085.9	0.23	-0.10	0.21
8,223.0	89.60	269.50	6,817.4	1,399.1	-939.8	1,179.4	1.53	0.42	-1.47
8,319.0	89.60	270.00	6,818.1	1,398.7	-1,035.8	1,273.7	0.52	0.00	0.52
8,414.0	91.10	268.60	6,817.5	1,397.6	-1,130.7	1,366.9	2.16	1.58	-1.47
8,510.0	91.30	268.20	6,815.5	1,394.9	-1,226.7	1,460.7	0.47	0.21	-0.42
8,606.0	89.80	268.40	6,814.5	1,392.0	-1,322.6	1,554.5	1.58	-1.56	0.21
8,701.0	89.50	268.20	6,815.1	1,389.2	-1,417.6	1,647.4	0.38	-0.32	-0.21
8,797.0	89.80	268.10	6,815.7	1,386.1	-1,513.5	1,741.1	0.33	0.31	-0.10
8,892.0	89.50	269.10	6,816.3	1,383.8	-1,608.5	1,834.1	1.10	-0.32	1.05

Company:	PDC Energy Inc. DJ Basin	Local Co-ordinate Reference:	Well McGlothlin Farms 4W-404
Project:	SEC.4-T5N-R64W	TVD Reference:	WELL @ 4639.0ft (Ensign Rig #161 - RKB - 23')
Site:	McGlothlin Farms 5N64W4DX Pad Sec.4-T5N-R64W	MD Reference:	WELL @ 4639.0ft (Ensign Rig #161 - RKB - 23')
Well:	McGlothlin Farms 4W-404	North Reference:	True
Wellbore:	McGlothlin Farms 4W-404 Wellbore #1	Survey Calculation Method:	Minimum Curvature
Design:	McGlothlin Farms 4W-404 Wellbore #1	Database:	US_EDM

Survey									
Measured Depth (ft)	Inclination (°)	Azimuth (°)	Vertical Depth (ft)	+N/-S (ft)	+E/-W (ft)	Vertical Section (ft)	Dogleg Rate (°/100usft)	Build Rate (°/100usft)	Turn Rate (°/100usft)
8,988.0	89.80	270.70	6,816.9	1,383.6	-1,704.5	1,928.4	1.70	0.31	1.67
9,084.0	90.30	270.00	6,816.8	1,384.2	-1,800.5	2,022.9	0.90	0.52	-0.73
9,180.0	89.90	270.00	6,816.6	1,384.2	-1,896.5	2,117.3	0.42	-0.42	0.00
9,276.0	90.10	269.80	6,816.6	1,384.0	-1,992.5	2,211.7	0.29	0.21	-0.21
9,372.0	89.10	267.90	6,817.3	1,382.1	-2,088.5	2,305.7	2.24	-1.04	-1.98
9,468.0	90.70	270.90	6,817.5	1,381.1	-2,184.4	2,399.9	3.54	1.67	3.13
9,564.0	90.10	270.70	6,816.8	1,382.5	-2,280.4	2,494.5	0.66	-0.63	-0.21
9,660.0	90.50	270.70	6,816.3	1,383.6	-2,376.4	2,589.1	0.42	0.42	0.00
9,755.0	90.80	270.20	6,815.2	1,384.4	-2,471.4	2,682.6	0.61	0.32	-0.53
9,851.0	88.80	270.00	6,815.5	1,384.5	-2,567.4	2,777.0	2.09	-2.08	-0.21
9,947.0	90.00	270.50	6,816.6	1,385.0	-2,663.4	2,871.5	1.35	1.25	0.52
10,042.0	89.20	269.80	6,817.2	1,385.2	-2,758.4	2,964.9	1.12	-0.84	-0.74
10,138.0	89.20	269.60	6,818.6	1,384.7	-2,854.4	3,059.2	0.21	0.00	-0.21
10,233.0	89.20	269.50	6,819.9	1,384.0	-2,949.4	3,152.5	0.11	0.00	-0.11
10,329.0	90.10	270.20	6,820.5	1,383.7	-3,045.4	3,246.8	1.19	0.94	0.73
10,425.0	89.60	268.60	6,820.7	1,382.7	-3,141.4	3,341.0	1.75	-0.52	-1.67
10,520.0	90.00	268.80	6,821.1	1,380.5	-3,236.3	3,434.0	0.47	0.42	0.21
10,615.0	89.50	267.90	6,821.5	1,377.8	-3,331.3	3,526.8	1.08	-0.53	-0.95
10,711.0	90.10	270.50	6,821.8	1,376.5	-3,427.3	3,621.0	2.78	0.63	2.71
10,807.0	90.00	270.20	6,821.7	1,377.1	-3,523.3	3,715.5	0.33	-0.10	-0.31
10,903.0	89.70	268.90	6,822.0	1,376.3	-3,619.3	3,809.7	1.39	-0.31	-1.35
10,998.0	89.30	268.40	6,822.8	1,374.1	-3,714.2	3,902.7	0.67	-0.42	-0.53
Deepest TVD Drilled - 6822.80' TVD									
11,094.0	91.00	270.30	6,822.5	1,373.0	-3,810.2	3,996.8	2.66	1.77	1.98
11,189.0	91.50	269.80	6,820.5	1,373.1	-3,905.2	4,090.2	0.74	0.53	-0.53
11,285.0	91.70	269.50	6,817.8	1,372.5	-4,001.2	4,184.5	0.38	0.21	-0.31
11,381.0	89.60	269.60	6,816.7	1,371.7	-4,097.1	4,278.7	2.19	-2.19	0.10
11,477.0	90.00	269.60	6,817.0	1,371.0	-4,193.1	4,373.0	0.42	0.42	0.00
11,573.0	89.60	269.10	6,817.4	1,370.0	-4,289.1	4,467.2	0.67	-0.42	-0.52
11,669.0	90.50	270.30	6,817.3	1,369.5	-4,385.1	4,561.4	1.56	0.94	1.25
11,764.0	90.70	269.80	6,816.3	1,369.5	-4,480.1	4,654.9	0.57	0.21	-0.53
11,860.0	89.60	271.20	6,816.0	1,370.4	-4,576.1	4,749.4	1.85	-1.15	1.46
11,956.0	91.00	272.30	6,815.5	1,373.3	-4,672.1	4,844.3	1.85	1.46	1.15
12,051.0	89.30	269.80	6,815.3	1,375.0	-4,767.0	4,938.0	3.18	-1.79	-2.63
12,147.0	90.60	269.80	6,815.4	1,374.7	-4,863.0	5,032.3	1.35	1.35	0.00
12,243.0	89.40	268.20	6,815.4	1,373.0	-4,959.0	5,126.3	2.08	-1.25	-1.67
12,339.0	89.40	268.10	6,816.4	1,369.9	-5,055.0	5,220.1	0.10	0.00	-0.10
12,434.0	90.30	268.40	6,816.6	1,367.0	-5,149.9	5,312.9	1.00	0.95	0.32
12,530.0	91.20	268.40	6,815.4	1,364.4	-5,245.9	5,406.8	0.94	0.94	0.00
12,626.0	89.60	269.50	6,814.7	1,362.6	-5,341.8	5,500.8	2.02	-1.67	1.15
12,721.0	90.40	270.00	6,814.7	1,362.2	-5,436.8	5,594.2	0.99	0.84	0.53
12,817.0	88.90	270.20	6,815.3	1,362.4	-5,532.8	5,688.6	1.58	-1.56	0.21

Company:	PDC Energy Inc. DJ Basin	Local Co-ordinate Reference:	Well McGlothlin Farms 4W-404
Project:	SEC.4-T5N-R64W	TVD Reference:	WELL @ 4639.0ft (Ensign Rig #161 - RKB - 23')
Site:	McGlothlin Farms 5N64W4DX Pad Sec.4-T5N-R64W	MD Reference:	WELL @ 4639.0ft (Ensign Rig #161 - RKB - 23')
Well:	McGlothlin Farms 4W-404	North Reference:	True
Wellbore:	McGlothlin Farms 4W-404 Wellbore #1	Survey Calculation Method:	Minimum Curvature
Design:	McGlothlin Farms 4W-404 Wellbore #1	Database:	US_EDM

Survey									
Measured Depth (ft)	Inclination (°)	Azimuth (°)	Vertical Depth (ft)	+N/-S (ft)	+E/-W (ft)	Vertical Section (ft)	Dogleg Rate (°/100usft)	Build Rate (°/100usft)	Turn Rate (°/100usft)
12,913.0	89.60	270.50	6,816.5	1,362.9	-5,628.8	5,783.1	0.79	0.73	0.31
13,009.0	90.00	270.50	6,816.9	1,363.8	-5,724.8	5,877.6	0.42	0.42	0.00
13,105.0	89.80	270.50	6,817.1	1,364.6	-5,820.8	5,972.1	0.21	-0.21	0.00
13,201.0	89.90	270.50	6,817.3	1,365.5	-5,916.8	6,066.7	0.10	0.10	0.00
13,296.0	90.00	269.30	6,817.4	1,365.3	-6,011.8	6,160.0	1.27	0.11	-1.26
13,392.0	89.30	269.30	6,818.0	1,364.1	-6,107.8	6,254.2	0.73	-0.73	0.00
13,488.0	90.00	269.50	6,818.6	1,363.1	-6,203.8	6,348.4	0.76	0.73	0.21
13,584.0	89.80	268.40	6,818.7	1,361.3	-6,299.8	6,442.4	1.16	-0.21	-1.15
13,680.0	89.50	269.50	6,819.3	1,359.6	-6,395.8	6,536.5	1.19	-0.31	1.15
13,776.0	89.60	268.60	6,820.1	1,358.0	-6,491.7	6,630.6	0.94	0.10	-0.94
13,871.0	89.80	270.30	6,820.6	1,357.1	-6,586.7	6,723.8	1.80	0.21	1.79
13,967.0	89.80	269.60	6,820.9	1,357.0	-6,682.7	6,818.2	0.73	0.00	-0.73
14,063.0	90.50	269.10	6,820.6	1,355.9	-6,778.7	6,912.3	0.90	0.73	-0.52
14,158.0	90.90	268.40	6,819.5	1,353.8	-6,873.7	7,005.3	0.85	0.42	-0.74
14,254.0	90.90	268.40	6,818.0	1,351.2	-6,969.6	7,099.2	0.00	0.00	0.00
14,350.0	91.20	268.10	6,816.2	1,348.2	-7,065.6	7,193.0	0.44	0.31	-0.31
14,445.0	91.50	267.40	6,814.0	1,344.5	-7,160.5	7,285.6	0.80	0.32	-0.74
14,540.0	92.00	268.20	6,811.1	1,340.9	-7,255.4	7,378.2	0.99	0.53	0.84
14,600.0	92.00	268.20	6,809.0	1,339.0	-7,315.3	7,436.8	0.00	0.00	0.00

Design Targets									
Target Name	Dip Angle (°)	Dip Dir. (°)	TVD (ft)	+N/-S (ft)	+E/-W (ft)	Northing (usft)	Easting (usft)	Latitude	Longitude
- hit/miss target									
- Shape									
SHL 1185'FSL, 579'FEL, - survey hits target center - Point	0.00	0.00	1.0	0.0	0.0	1,398,816.43	3,265,091.50	40.424246	-104.547822
BHL 2567'FSL, 2611'FEI - survey misses target center by 22.2ft at 14600.0ft MD (6809.0 TVD, 1339.0 N, -7315.3 E) - Point	0.00	0.00	6,819.0	1,358.7	-7,317.3	1,400,096.42	3,257,760.29	40.427973	-104.574105

Survey Annotations				
Measured Depth (ft)	Vertical Depth (ft)	+N/-S (ft)	+E/-W (ft)	Comment
7,157.6	6,759.7	1,392.6	119.0	TPZ - 460' Setback - 2578'FSL & 460'FEL, SEC.4
10,998.0	6,822.8	1,374.1	-3,714.2	Deepest TVD Drilled - 6822.80' TVD

Checked By: _____	Approved By: _____	Date: _____
-------------------	--------------------	-------------