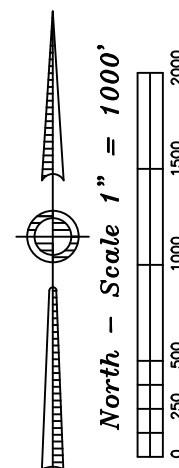
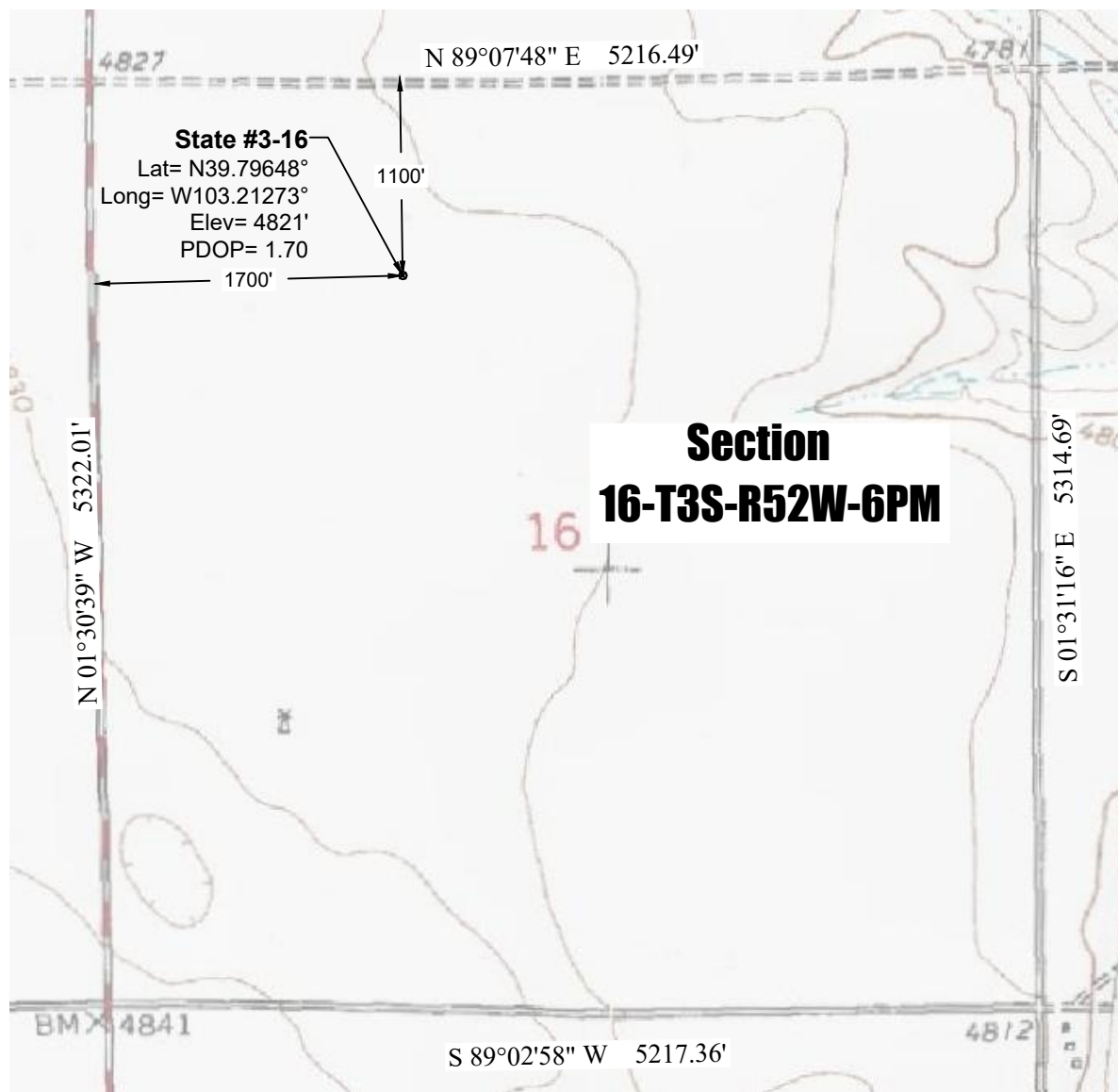


Topographic Exhibit



Notes:

- In accordance with a request from St. Croix Operating, Inc., PLS Group has determined the location of the State #3-16 well to be 1700' FWL and 1100' FNL as measured perpendicular to the section lines.
- Survey elevations based on NAVD 88 Datum using GPS observed heights and Geoid 12B corrections.
- Distances shown are in SPC grid feet. Ground scale factor= 1.00023829242.
- There are no improvements within 100' of the proposed well site.
- Apparent Land Use is cropland.
- Vegetation is harvested field corn.
- Topographic map contours and spot elevations based on NGVD 1929 Datum.
- Topographic map dated 1978.

P:\Project\2017\17149\dwg\17149_Topo.dwg December 12, 2017 - 1:43pm

Well Name:	Field Date	Prepared for:	Project#:
State #3-16	12.11.2017	St. Croix Operating, Inc.	17149.001
Section 16-T3S-R52W-6th PM, NE-NW	Party Chief		
Washington County, Colorado	DCB	PLS Group 6843 North Franklin Avenue Loveland, Colorado 80538 970.669.2100 office - 970.669.3652 fax	
	Proj. Manager		
	ZNB		
	Drawing Date		
	12.13.2017		