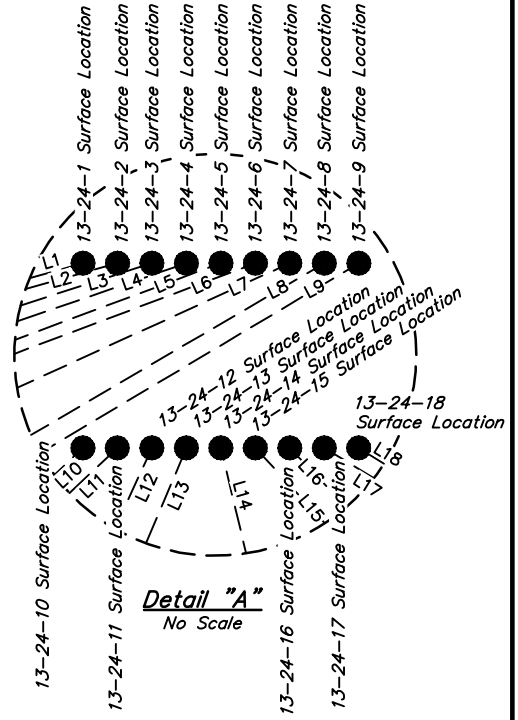
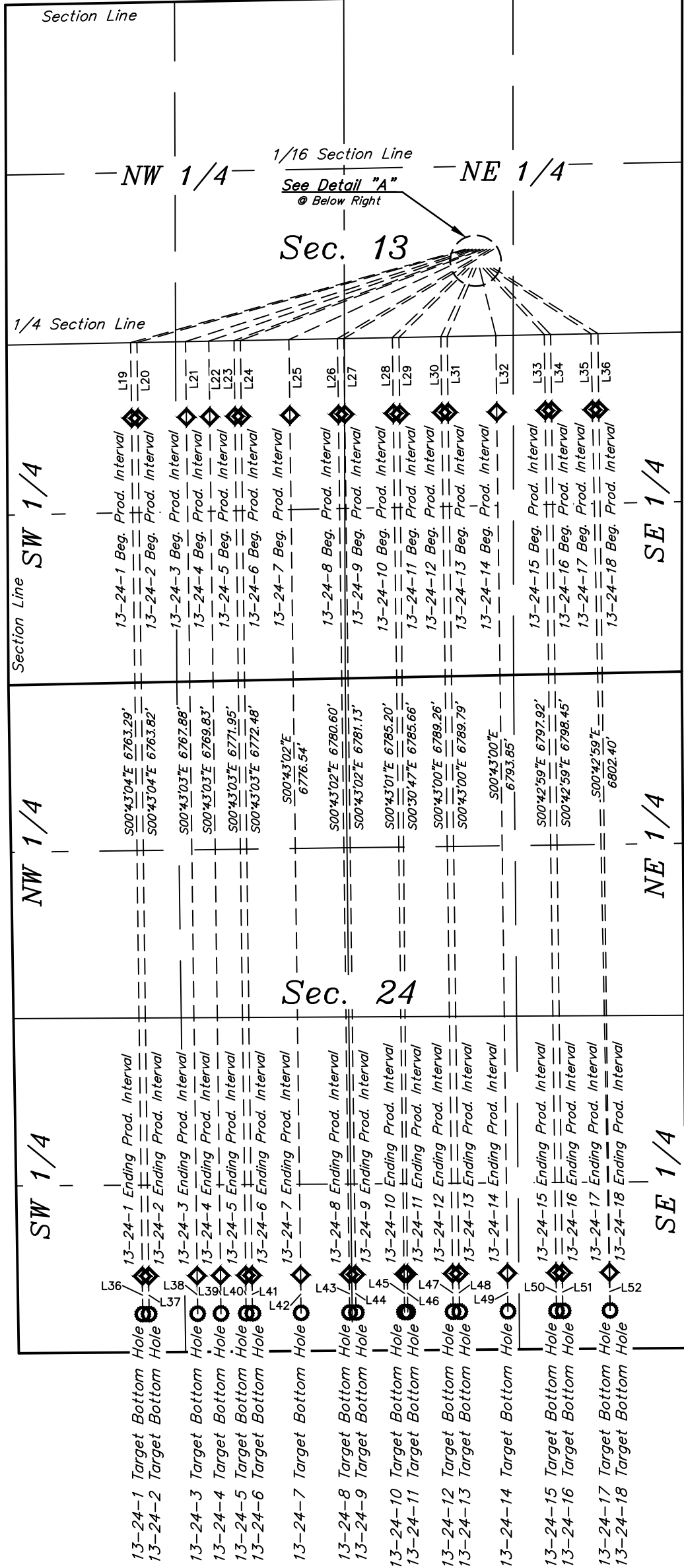




R 60 W
R 59 W



LINE TABLE		
LINE	DIRECTION	LENGTH
L1	S74°24'26"W	2741.92'
L2	S74°18'09"W	2720.52'
L3	S72°09'39"W	2378.37'
L4	S71°01'13"W	2229.21'
L5	S69°34'41"W	2067.02'
L6	S69°23'23"W	2046.06'
L7	S65°26'38"W	1715.20'
L8	S59°39'41"W	1396.38'
L9	S59°14'04"W	1376.99'
L10	S46°29'04"W	794.46'
L11	S45°18'05"W	776.28'
L12	S24°47'18"W	594.38'
L13	S22°52'11"W	584.61'
L14	S13°31'33"E	546.36'
L15	S42°39'47"E	712.28'
L16	S43°59'26"E	726.69'
L17	S56°58'28"E	947.94'
L18	S57°53'11"E	969.84'
L19	S00°43'04"E	601.87'
L20	S00°43'04"E	601.91'
L21	S00°43'03"E	602.21'
L22	S00°43'03"E	602.35'
L23	S00°43'03"E	602.51'
L24	S00°43'03"E	602.55'
L25	S00°43'02"E	602.85'
L26	S00°43'02"E	603.15'
L27	S00°43'02"E	603.19'
L28	S00°43'01"E	603.50'
L29	S00°30'47"E	603.55'
L30	S00°43'00"E	603.80'
L31	S00°43'00"E	603.84'
L32	S00°43'00"E	604.14'
L33	S00°42'59"E	604.44'
L34	S00°42'59"E	604.48'
L35	S01°07'21"E	604.72'
L36	S00°43'04"E	300.00'
L37	S00°43'04"E	300.00'
L38	S00°43'03"E	300.00'
L39	S00°43'03"E	300.00'
L40	S00°43'03"E	300.00'
L41	S00°43'03"E	300.00'
L42	S00°43'02"E	300.00'
L43	S00°43'02"E	300.00'
L44	S00°43'02"E	300.00'
L45	S00°43'01"E	300.00'
L46	S00°30'47"E	300.00'
L47	S00°43'00"E	300.00'
L48	S00°43'00"E	300.00'
L49	S00°43'00"E	300.00'
L50	S00°42'59"E	300.00'
L51	S00°42'59"E	300.00'
L52	S01°07'21"E	300.02'



- LEGEND:**
- = PROPOSED WELLHEAD.
 - ◇ = PRODUCTION INTERVAL.
 - = TARGET BOTTOM HOLE.

REV: 2 01-18-18 D.COX (SECTION CORRECTION)

NOTES:

BISON OIL & GAS II

ROHN FFD 9-60 13 PAD
 SW 1/4 NE 1/4, SECTION 13, T9N, R60W, 6th P.M.
 WELD COUNTY, COLORADO



UELS, LLC
 Corporate Office * 85 South 200 East
 Vernal, UT 84078 * (435) 789-1017

SURVEYED BY	JAMES FRESHWATER	01-02-18	SCALE
DRAWN BY	D.J.W.	01-05-18	1" = 1000'
MULTI-WELL PLAN		FIGURE #5	