



SRC ENERGY

Operator: SRC Energy
Well Name: Ulrich PC I 17-08
Legal: SENE, Section 17, Township 6N, Range 66W
Location: Weld County, CO
API: 05-123-33397

Deepest Water Well
 Within 1 Mile = 675'





Wellbore History

Spud Date: 1/28/2012
 Surf Csg: 8.625", 24# @ 696' – 242 sx
 Prod Csg: 4.5", 11.6# @ 7356' – 590 sx
 TOC: 2096' (CBL)
 Perfs: NBRR: 6888'-7034'
 CODL: 7198'-7214'

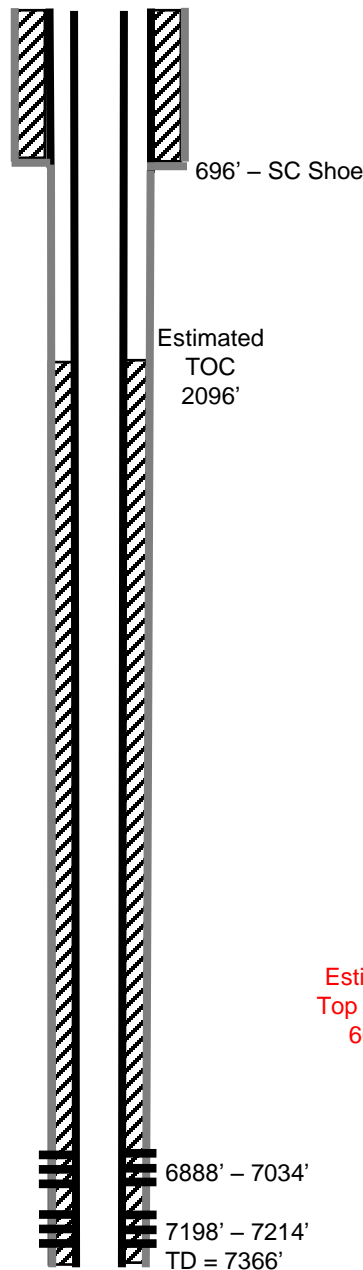
P&A Procedure

Set CIBP @ 6813'
 Set 14 sx on top of CIBP (145' plug)
 Pump 29 sx @ 4300' (300' plug)
 Pump 29 sx @ 2500' (300' plug)
 Cut Casing @ 796'
 Pump 327 sx @ 846' to surface

Key

-  Existing Cement Coverage
-  CICR
-  Cement Pumped
-  CIBP

Current



Proposed

