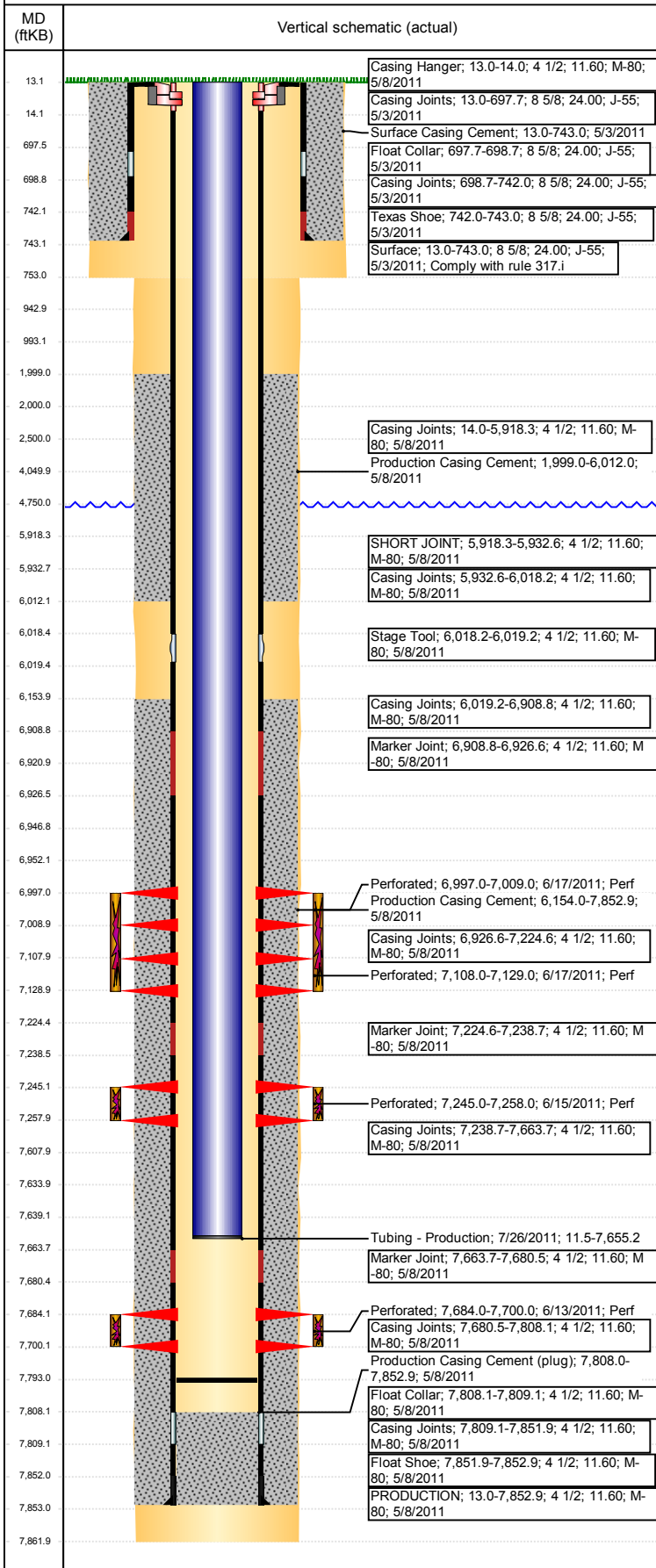


**Well Name: DECHANT STATE H36-20D**

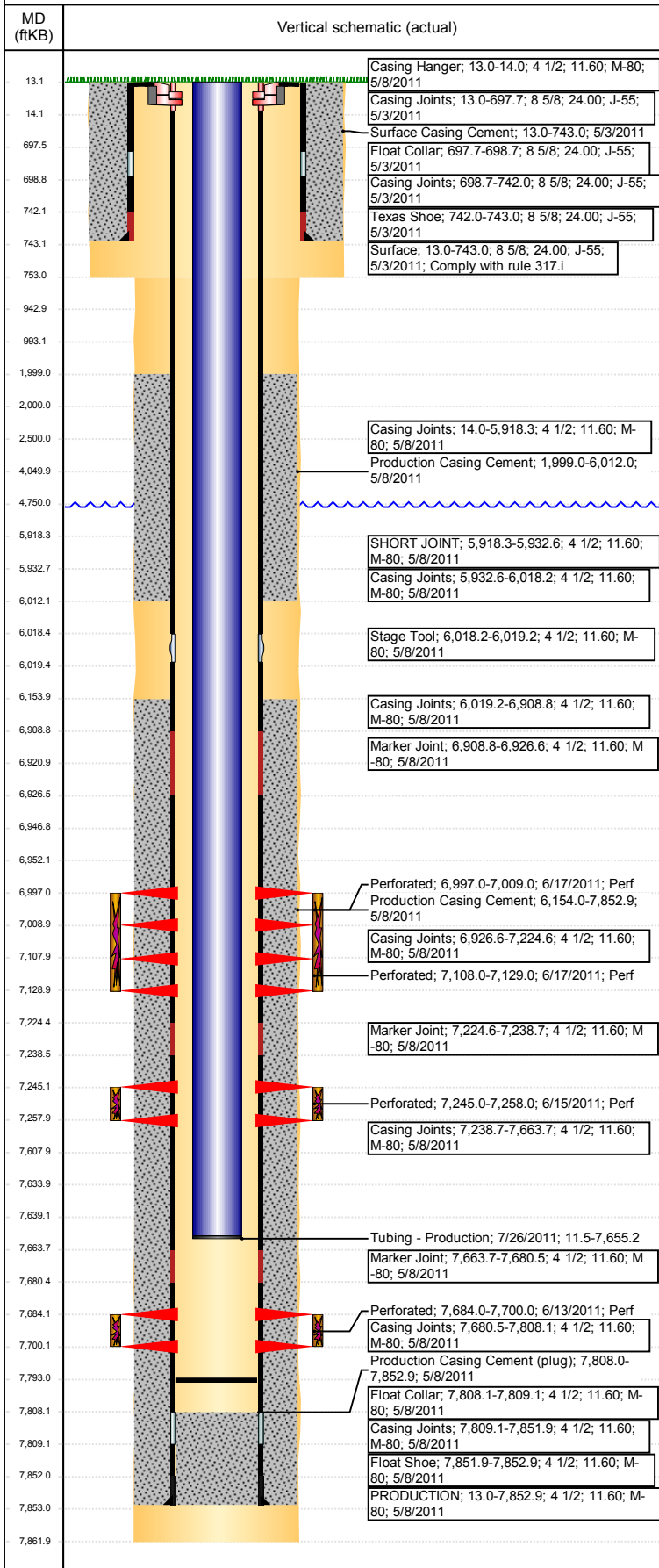
DEVIATED - ORIGINAL HOLE, 1/22/2018 12:50:58 PM



Well Header							
API 05-123-32544	Business Unit DJ BASIN		District 15		Well Config DEVIATED		
Original KB Elevation (ft) 4,844	KB - GL / MSL (ftKB) 13.00		Spud Date 5/2/2011		P & A Date		
Comment 318 A.e LOCATION!							
PUMPED OFF 3 7/8" CONE BIT & 1/2 OF PUMP OFF BIT SUB @ 7793' KB.							
Directions To Well WCR 30 & 49, South 2 miles, West .8 mile, North .2 mile, Northwest .2 mile and East into location.							
Congressional Location							
Quarter 3 NW	Quarter 4 SW	Section 36	Township 3	Twnshp N/S Dir N	Range 65	Range E/W Dir W	
Bottom Hole Location							
North-South Distance (ft) 2,550.0		From N or S Line FSL		East-West Distance (ft) 1,320.0		From E or W Line FWL	
Plug Back Total Depths							
Date	Depth (ftKB)	Method		Com			
5/8/2011	6,018.0	CASING TALLY		STAGE COLLAR			
5/8/2011	7,808.0	CASING TALLY		FLOAT COLLAR			
6/10/2011	7,801.3	TBG TALLY		FILL			
6/13/2011	7,804.0	WIRELINE TAG		FILL			
7/26/2011	7,793.0	TBG TALLY		DRILLED OUT 2-CFP AND C/O TO 7793.00' KB AN...			
Wellbore Sections							
Section Des		Size (in)		Act Top, MD (ftKB)		Act Btm, MD (ftKB)	
SURFACE		12 1/4		13		753	
PRODUCTION		7 7/8		753		7,862	
Zone Statuses							
Zone Name	Status Date	Status	Fluid Type	Job	Prod Method		
NIOBRARA	6/18/2011	PR		DRILLING/CO...			
CODELL	6/18/2011	PR		DRILLING/CO...			
J SAND	6/18/2011	PR		DRILLING/CO...			
Casing Strings							
Surface, 743.0ftKB							
Casing Description Surface	Run Date 5/3/2011	OD (in) 8 5/8	Wt/Len (l...) 24.00	Grade J-55	Top, MD (ft...) 13.0	MD (ftKB) 743.0	
PRODUCTION, 7,852.9ftKB							
Casing Description PRODUCTION	Run Date 5/8/2011	OD (in) 4 1/2	Wt/Len (l...) 11.60	Grade M-80	Top, MD (ft...) 13.0	MD (ftKB) 7,852.9	
Cement							
Description Surface Casing Cement				Top Depth (ftKB) 13.0		Bottom Depth (ftKB) 743.0	
Description Production Casing Cement				Top Depth (ftKB) 1,999.0		Bottom Depth (ftKB) 6,012.0	
Description Production Casing Cement				Top Depth (ftKB) 6,154.0		Bottom Depth (ftKB) 7,852.9	
Description Dump Bail				Top Depth (ftKB) 7,608.0		Bottom Depth (ftKB) 7,634.0	
Description Dump Bail				Top Depth (ftKB) 6,921.0		Bottom Depth (ftKB) 6,947.0	
Description Balance Plug				Top Depth (ftKB) 4,050.0		Bottom Depth (ftKB) 4,750.0	
Description Balance Plug				Top Depth (ftKB) 2,000.0		Bottom Depth (ftKB) 2,500.0	
Description Balance Plug				Top Depth (ftKB) 943.0		Bottom Depth (ftKB) 993.0	
Description Balance Plug				Top Depth (ftKB) 743.0		Bottom Depth (ftKB) 943.0	
Description Balance Plug				Top Depth (ftKB) 13.0		Bottom Depth (ftKB) 743.0	
Tubing Strings							
Tubing Description Tubing - Production	Run Date 7/26/2011	String... 2 3/8	ID (in) 2.00	Wt (lb/ft) 4.70	Grade J-55	Len (ft) 7,643.70	Set De... 7,541.3
Tubing Components							
Item Des	OD (in)	Wt (lb/ft)	Grade	Jts	Len (ft)	Btm (ftKB)	Btm (TVD) (ftKB)
Tubing	2 3/8	4.70	J-55	247	7,641.80	7,653.3	7,539.4
Seating Nipple	2 3/8			1	1.10	7,654.4	7,540.5

**Well Name: DECHANT STATE H36-20D**

DEVIATED - ORIGINAL HOLE, 1/22/2018 12:50:59 PM



Tubing Components							
Item Des	OD (in)	Wt (lb/ft)	Grade	Jts	Len (ft)	Btm (ftKB)	Btm (TVD) (ftKB)
1/2 of Pump Off Bit Sub	2 3/8			1	0.80	7,655.2	7,541.3

Other In Hole				
Run Date	Des	OD (in)	Top (ftKB)	Btm (ftKB)
1/16/2018	Cast Iron Bridge Plug	4	6,947.0	6,952.0
1/16/2018	Cast Iron Bridge Plug	4	7,634.0	7,639.0

Logs			
Date	Type	Top, MD (ftKB)	Btm, MD (ftKB)
5/7/2011	Caliper/Comp. Density/Neutron/GR/SP/ML	739.0	7,730.0
5/7/2011	DIL/GR/SP/Caliper	739.0	7,730.0
6/13/2011	CBL/CCL/GR	1,646.0	7,790.0

Perforation Data					
Linked Zone	Bnch/St g	Sum of Entered Shot Total	Top (ftKB)	Btm (ftKB)	Date
NIOBRARA, ORIGINAL HOLE	B	24	6,997.00	7,009.00	6/17/2011
NIOBRARA, ORIGINAL HOLE	C	24	7,108.00	7,129.00	6/17/2011
CODELL, ORIGINAL HOLE		52	7,245.00	7,258.00	6/15/2011
J SAND, ORIGINAL HOLE		64	7,684.00	7,700.00	6/13/2011

<b>Total (Sum)</b>	<b>164</b>				
--------------------	------------	--	--	--	--

## Stimulation Intervals

Start Date	Primary Job Type	
6/15/2011	DRILLING/COMPLETION - ORIGINAL	
Technical Result	Tech Result Details	Tech Result Note
Success	According to Plan	

Comment  
(J SAND ND) ISIP 1481, 5 MIN 1222, 10 MIN 1010. REVERSE STEP RESULTS: NWB 90, PERF 248, WB 738, OPEN PERF 23, TOTAL 1076. JOB WENT WELL WITH NO ISSUES TO REPORT. AVERAGES: VISC 21.8, TEMP 80.7, PH 9.96, NOLTE +0.12. POST ISIP 2022, 5 MIN 1823.

Start Date 6/17/2011	Primary Job Type DRILLING/COMPLETION - ORIGINAL	
Technical Result Success	Tech Result Details According to Plan	Tech Result Note

Comment  
(CODELL ND) ISIP 3403, 5 MIN 3217. REVERSE STEP RESULTS: NWB 105, PERF 220, WB 250, OPEN PERF 13, TOTAL 575. PUMPED A 2000 GAL 1/2 LB SAND SCOUR TO HELP REDUCE TREATING PRESSURE. JOB WENT WELL WITH NO ISSUES TO REPORT. AVERAGES: VISC 27.1, TEMP 72.3, PH 10.14, NOLTE +0.03. POST ISIP 3664, 5 MIN 3473.

Start Date	Primary Job Type	
6/17/2011	DRILLING/COMPLETION - ORIGINAL	
Technical Result	Tech Result Details	Tech Result Note
Success	According to Plan	

Comment  
(NIOBRARA B&C ND) ISIP 3433. JOB WENT WELL WITH NO ISSUES TO REPORT. AVERAGES: VISC 23.1, TEMP 78.2, PH 10.16, NOLTE +0.21. POST ISIP 3386, 5 MIN 3233.