

**ATTACHMENT B  
WELL COMPLETION  
LOGS**



6899 Pecos Street, Unit C  
Denver, Colorado 80221

CLIENT: Kerr-McGee Oil & Gas Onshore, LP

LOGGED BY: Zach Mahaffey

PROJECT MANAGER: Robert Cornez

DRILLING CONTRACTOR: Tasman Geosciences, Inc.

DRILLING EQUIPMENT: AMS Powerprobe 9300-SK

DRILL BIT SIZE (INCHES): 2.375"

DATE STARTED - COMPLETED: 10/21/2016

TOTAL WELL DEPTH (FT. BGS): 20

DEPTH TO WATER (FT. BGS): 10

HSR-Hall 64N66W31NWSW

BORING / WELL ID: BH01

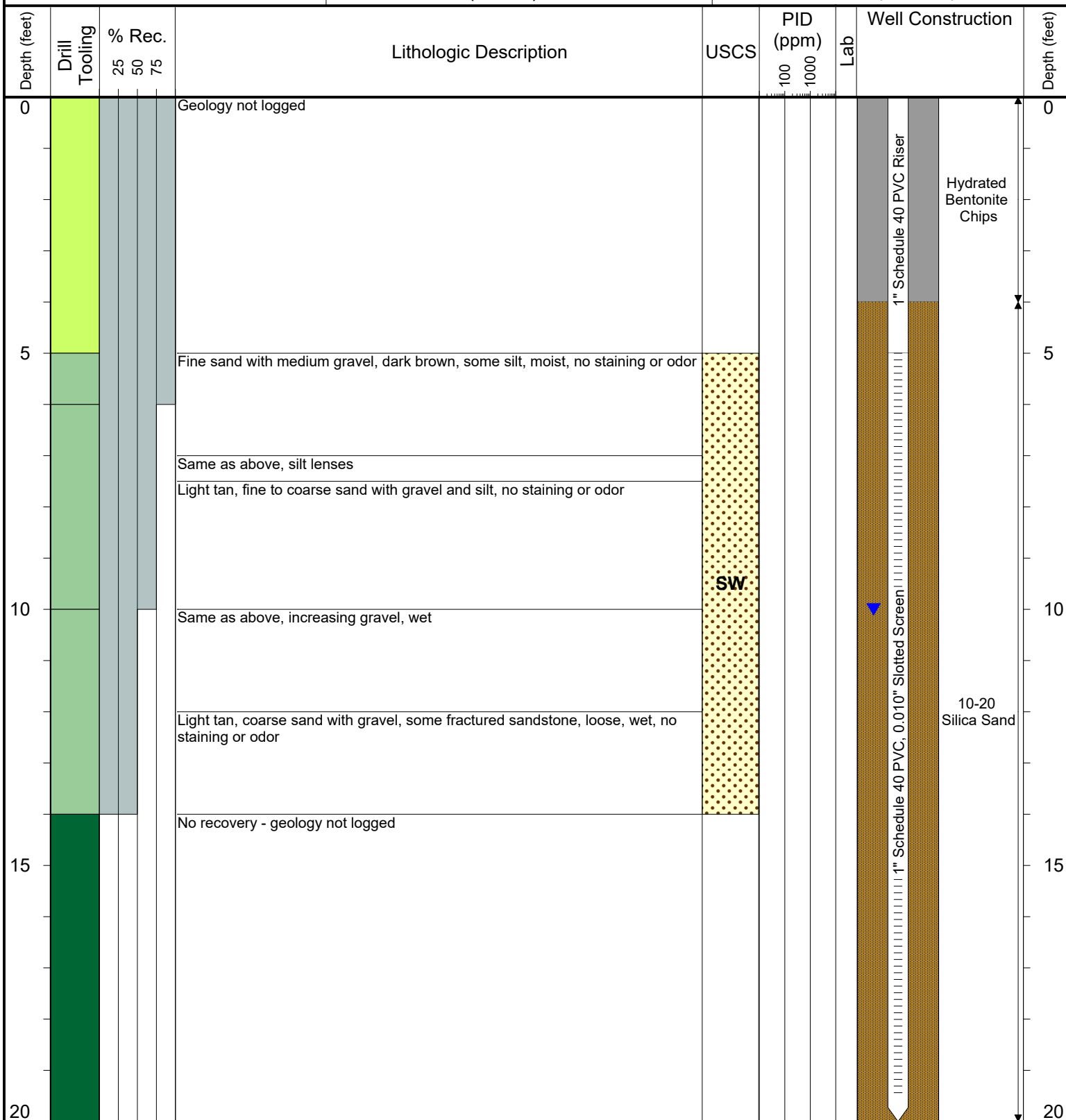
COMPLETION: Stick-up - 2.9'

NORTHING (CO STATE PLANE): 40.267313696

EASTING (CO STATE PLANE): -104.82557851

CASING ELEVATION (FT. AMSL): 4768.49

GROUND ELEVATION (FT. AMSL): 4765.61



Drilling / Sample Method:

- Macro-Core
- Hand Auger
- Expendable Well Tip
- Hydrovac

Laboratory Sample Types:

- Geotechnical Lab
- Analytical Chemistry Lab
- Geotechnical & Analytical Chemistry Lab



6899 Pecos Street, Unit C  
Denver, Colorado 80221

CLIENT: Kerr-McGee Oil & Gas Onshore, LP

LOGGED BY: Zach Mahaffey

PROJECT MANAGER: Robert Cornez

DRILLING CONTRACTOR: Tasman Geosciences, Inc.

DRILLING EQUIPMENT: AMS Powerprobe 9300-SK

DRILL BIT SIZE (INCHES): 2.375"

DATE STARTED - COMPLETED: 10/21/2016

TOTAL WELL DEPTH (FT. BGS): 20

DEPTH TO WATER (FT. BGS): 10.5

HSR-Hall 64N66W31NWSW

BORING / WELL ID: BH02

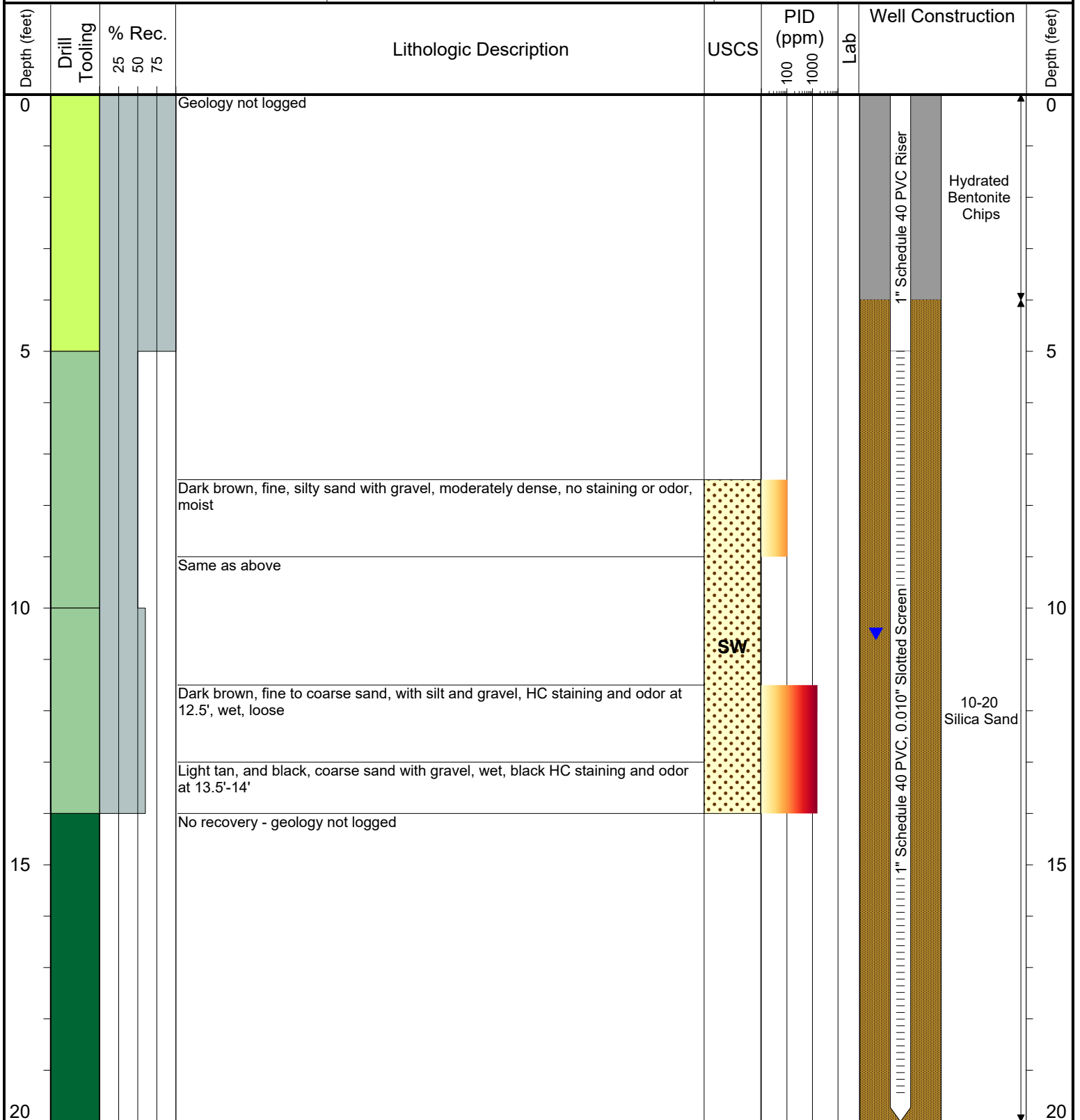
COMPLETION: Stick-up - 2.2'

NORTHING (CO STATE PLANE): 40.267388901

EASTING (CO STATE PLANE): -104.8255735

CASING ELEVATION (FT. AMSL): 4767.95

GROUND ELEVATION (FT. AMSL): 4765.75



Drilling / Sample Method:

- Macro-Core
- Hand Auger
- Expendable Well Tip
- Hydrovac

Laboratory Sample Types:

- Geotechnical Lab
- Analytical Chemistry Lab
- Geotechnical & Analytical Chemistry Lab



6899 Pecos Street, Unit C  
Denver, Colorado 80221

CLIENT: Kerr-McGee Oil & Gas Onshore, LP

LOGGED BY: Zach Mahaffey

PROJECT MANAGER: Robert Cornez

DRILLING CONTRACTOR: Tasman Geosciences, Inc.

DRILLING EQUIPMENT: AMS Powerprobe 9300-SK

DRILL BIT SIZE (INCHES): 2.375"

DATE STARTED - COMPLETED: 10/21/2016

TOTAL WELL DEPTH (FT. BGS): 20

DEPTH TO WATER (FT. BGS): 10

HSR-Hall 64N66W31NWSW

BORING / WELL ID: BH03

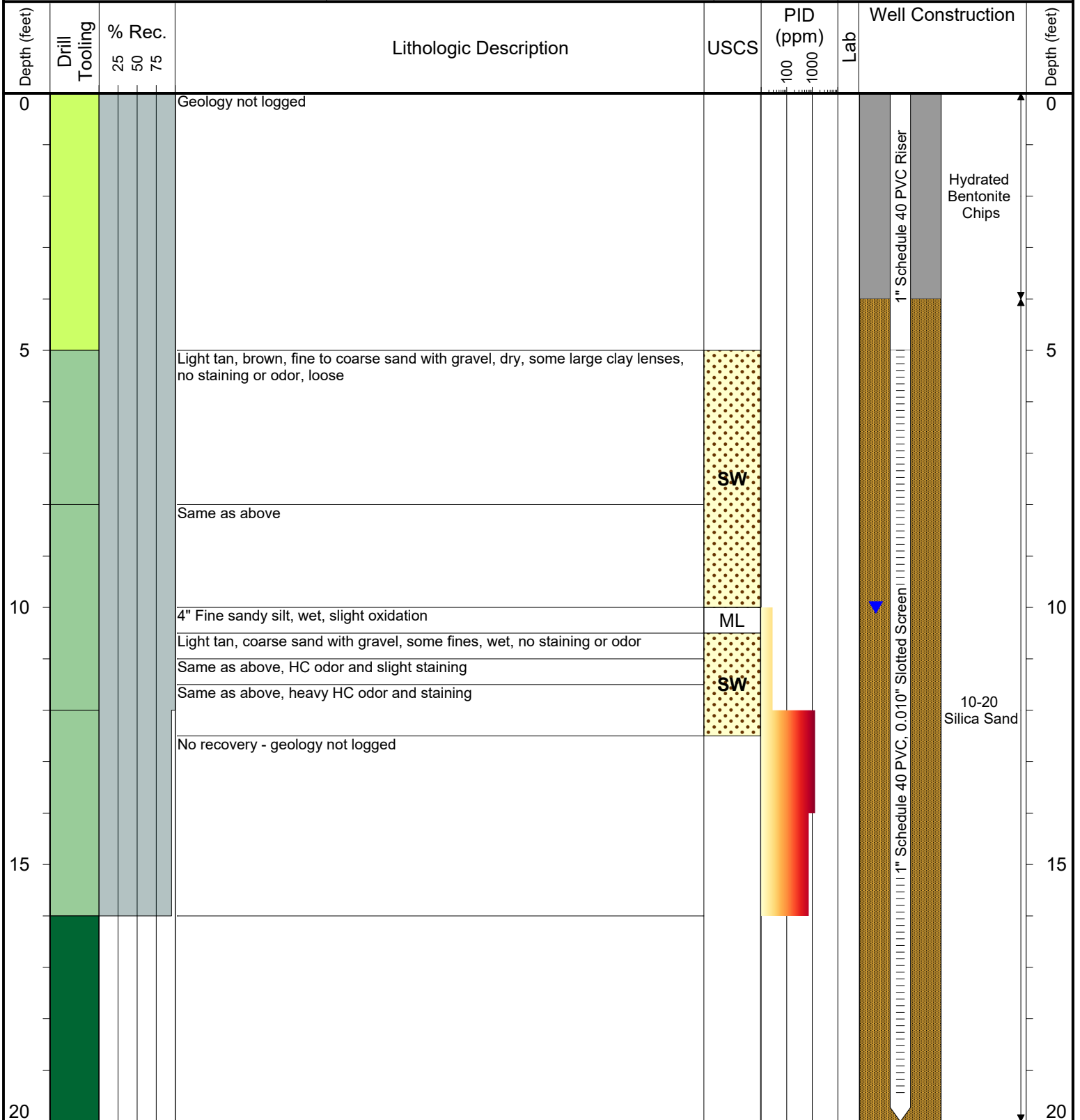
COMPLETION: Stick-up - 3.2'

NORTHING (CO STATE PLANE): 40.2675117

EASTING (CO STATE PLANE): -104.8255749

CASING ELEVATION (FT. AMSL): 4769.25

GROUND ELEVATION (FT. AMSL): 4766.01



Drilling / Sample Method:

- Macro-Core
- Hand Auger
- Expendable Well Tip
- Hydrovac

Laboratory Sample Types:

- Geotechnical Lab
- Analytical Chemistry Lab
- Geotechnical & Analytical Chemistry Lab



6899 Pecos Street, Unit C  
Denver, Colorado 80221

CLIENT: Kerr-McGee Oil & Gas Onshore, LP

LOGGED BY: Zach Mahaffey

PROJECT MANAGER: Robert Cornez

DRILLING CONTRACTOR: Tasman Geosciences, Inc.

DRILLING EQUIPMENT: AMS Powerprobe 9300-SK

DRILL BIT SIZE (INCHES): 2.375"

DATE STARTED - COMPLETED: 10/21/2016

TOTAL WELL DEPTH (FT. BGS): 20

DEPTH TO WATER (FT. BGS): 9.5

HSR-Hall 64N66W31NWSW

BORING / WELL ID: BH04

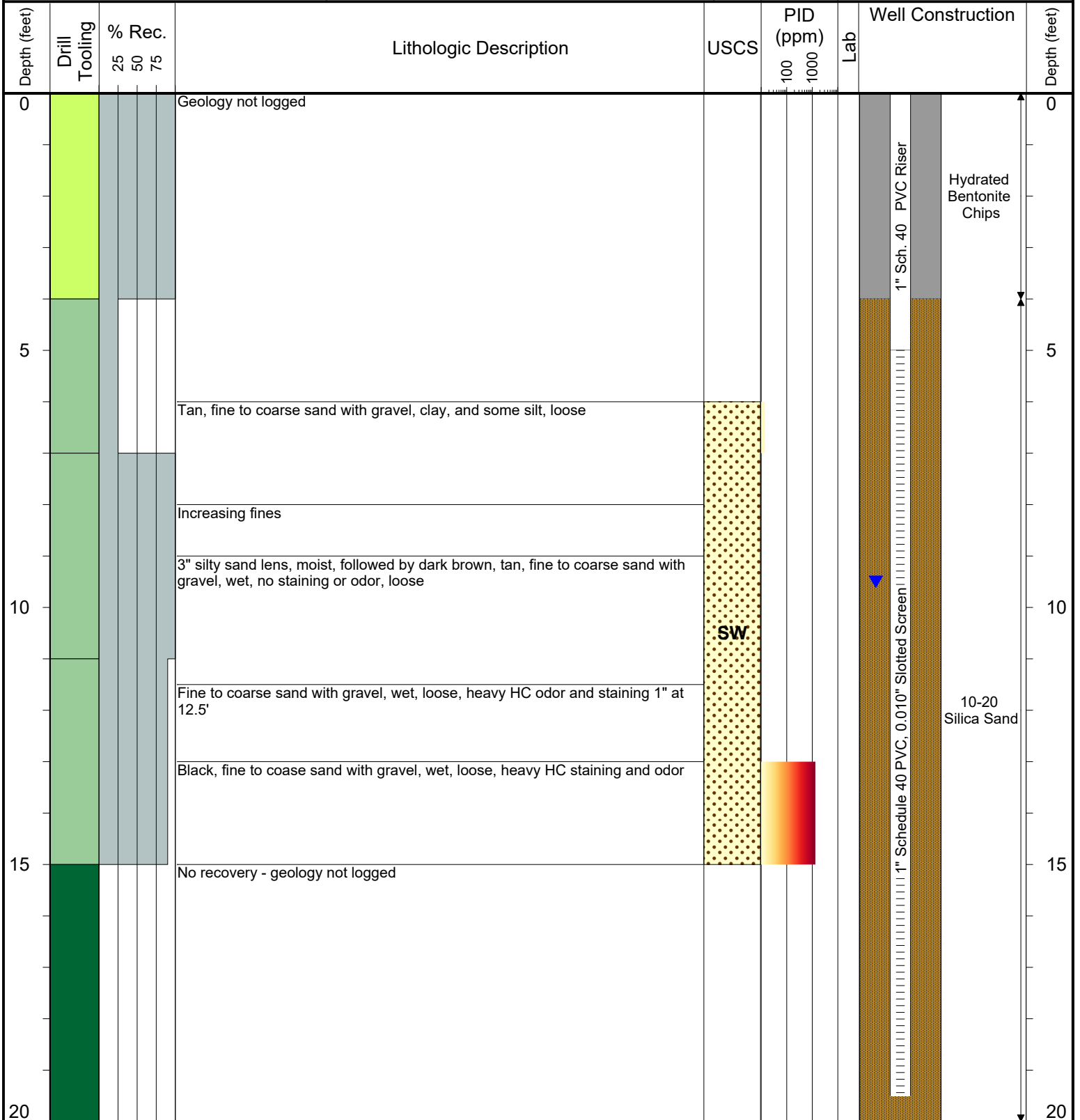
COMPLETION: Stick-up - 3.4'

NORTHING (CO STATE PLANE): 40.267387179

EASTING (CO STATE PLANE): -104.82565818

CASING ELEVATION (FT. AMSL): 4769.09

GROUND ELEVATION (FT. AMSL): 4765.73



**Drilling / Sample Method:**

- Macro-Core
- Hand Auger
- Expendable Well Tip
- Hydrovac

**Laboratory Sample Types:**

- Geotechnical Lab
- Analytical Chemistry Lab
- Geotechnical & Analytical Chemistry Lab



6899 Pecos Street, Unit C  
Denver, Colorado 80221

CLIENT: Kerr-McGee Oil & Gas Onshore, LP

LOGGED BY: Zach Mahaffey

PROJECT MANAGER: Robert Cornez

DRILLING CONTRACTOR: Tasman Geosciences, Inc.

DRILLING EQUIPMENT: AMS Powerprobe 9300-SK

DRILL BIT SIZE (INCHES): 2.375"

DATE STARTED - COMPLETED: 2/7/2017

TOTAL WELL DEPTH (FT. BGS): 20

DEPTH TO WATER (FT. BGS): 12

HSR-Hall 64N66W31NWSW

BORING / WELL ID: BH05

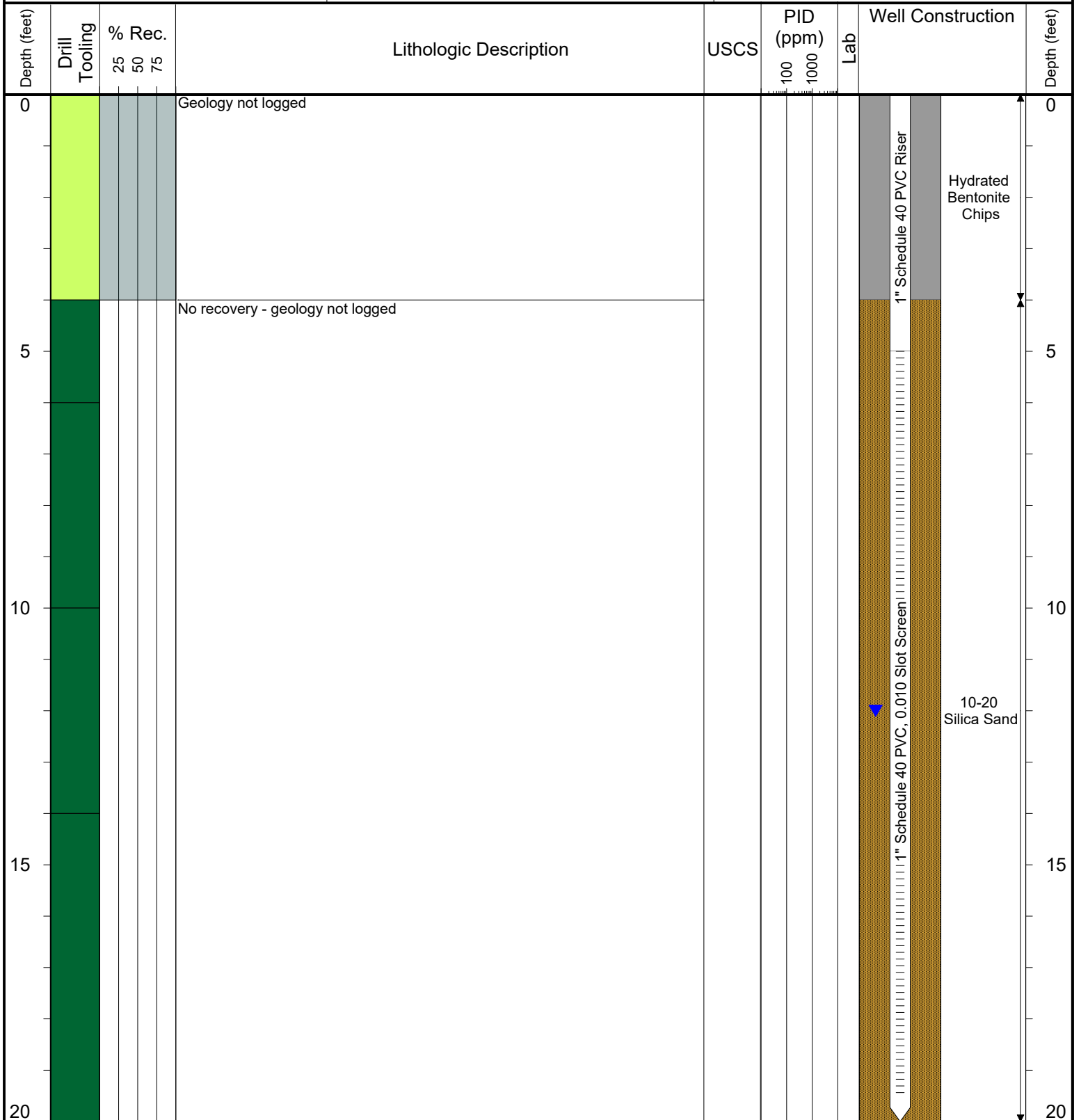
COMPLETION: Stick-up - 3.7'

NORTHING (CO STATE PLANE): 40.267317646

EASTING (CO STATE PLANE): -104.8254511

CASING ELEVATION (FT. AMSL): 4769.56

GROUND ELEVATION (FT. AMSL): 4765.84



**Drilling / Sample Method:**

- Macro-Core
- Hand Auger
- Expendable Well Tip
- Hydrovac

**Laboratory Sample Types:**

- Geotechnical Lab
- Analytical Chemistry Lab
- Geotechnical & Analytical Chemistry Lab



6899 Pecos Street, Unit C  
Denver, Colorado 80221

CLIENT: Kerr-McGee Oil & Gas Onshore, LP

LOGGED BY: Zach Mahaffey

PROJECT MANAGER: Robert Cornez

DRILLING CONTRACTOR: Tasman Geosciences, Inc.

DRILLING EQUIPMENT: AMS Powerprobe 9300-SK

DRILL BIT SIZE (INCHES): 2.375"

DATE STARTED - COMPLETED: 2/7/2017

TOTAL WELL DEPTH (FT. BGS): 20

DEPTH TO WATER (FT. BGS): 12

HSR-Hall 64N66W31NWSW

BORING / WELL ID: BH06

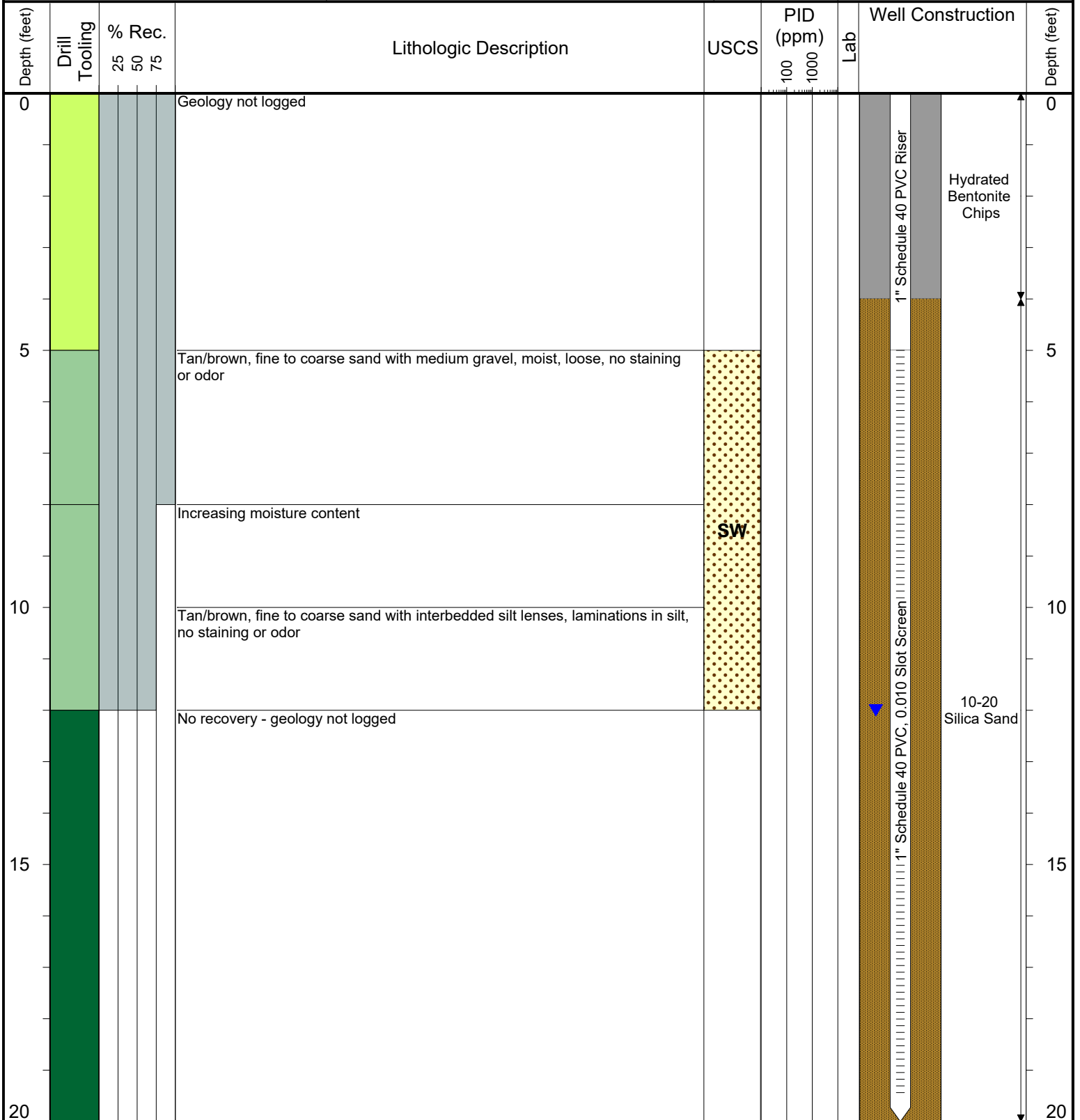
COMPLETION: Stick-up - 3.9'

NORTHING (CO STATE PLANE): 40.267399055

EASTING (CO STATE PLANE): -104.82545613

CASING ELEVATION (FT. AMSL): 4770.03

GROUND ELEVATION (FT. AMSL): 4766.11



Drilling / Sample Method:

- Macro-Core
- Hand Auger
- Expendable Well Tip
- Hydrovac

Laboratory Sample Types:

- Geotechnical Lab
- Analytical Chemistry Lab
- Geotechnical & Analytical Chemistry Lab



6899 Pecos Street, Unit C  
Denver, Colorado 80221

CLIENT: Kerr-McGee Oil & Gas Onshore, LP

LOGGED BY: Zach Mahaffey

PROJECT MANAGER: Robert Cornez

DRILLING CONTRACTOR: Tasman Geosciences, Inc.

DRILLING EQUIPMENT: AMS Powerprobe 9300-SK

DRILL BIT SIZE (INCHES): 2.375"

DATE STARTED - COMPLETED: 2/7/2017

TOTAL WELL DEPTH (FT. BGS): 20

DEPTH TO WATER (FT. BGS): 12

HSR-Hall 64N66W31NWSW

BORING / WELL ID: BH07

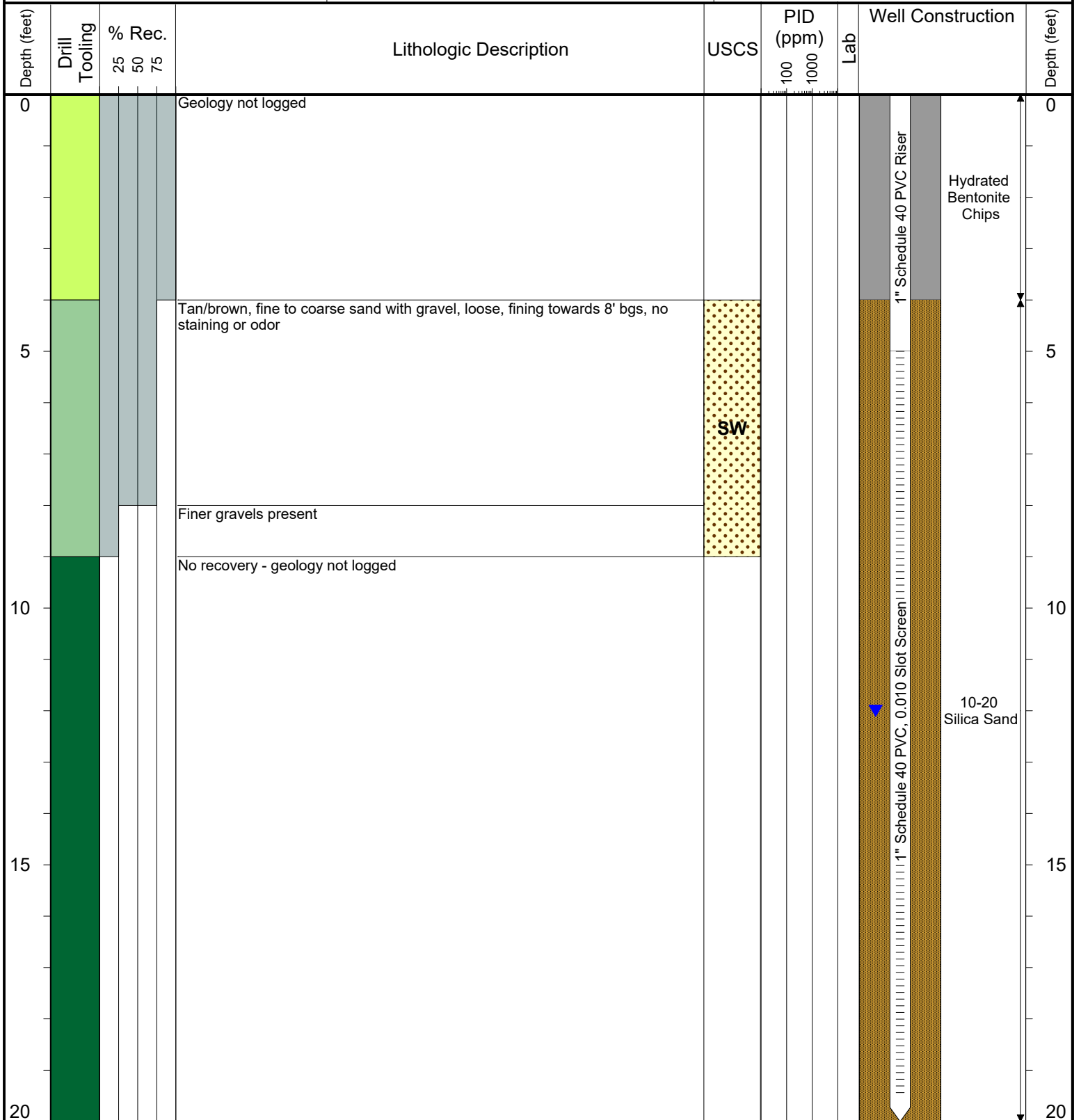
COMPLETION: Stick-up - 3.6'

NORTHING (CO STATE PLANE): 40.267501004

EASTING (CO STATE PLANE): -104.82546212

CASING ELEVATION (FT. AMSL): 4769.76

GROUND ELEVATION (FT. AMSL): 4766.14



Drilling / Sample Method:

- Macro-Core
- Hand Auger
- Expendable Well Tip
- Hydrovac

Laboratory Sample Types:

- Geotechnical Lab
- Analytical Chemistry Lab
- Geotechnical & Analytical Chemistry Lab



6899 Pecos Street, Unit C  
Denver, Colorado 80221

CLIENT: Kerr-McGee Oil & Gas Onshore, LP

LOGGED BY: Eric Siegel, P. G.

PROJECT MANAGER: Robert Cornez

DRILLING CONTRACTOR: Tasman Geosciences, Inc.

DRILLING EQUIPMENT: AMS Powerprobe 9300-SK

DRILL BIT SIZE (INCHES): 2.375"

DATE STARTED - COMPLETED: 2/7/2017

TOTAL WELL DEPTH (FT. BGS): 20

DEPTH TO WATER (FT. BGS): 12

HSR-Hall 64N66W31NWSW

BORING / WELL ID: BH08

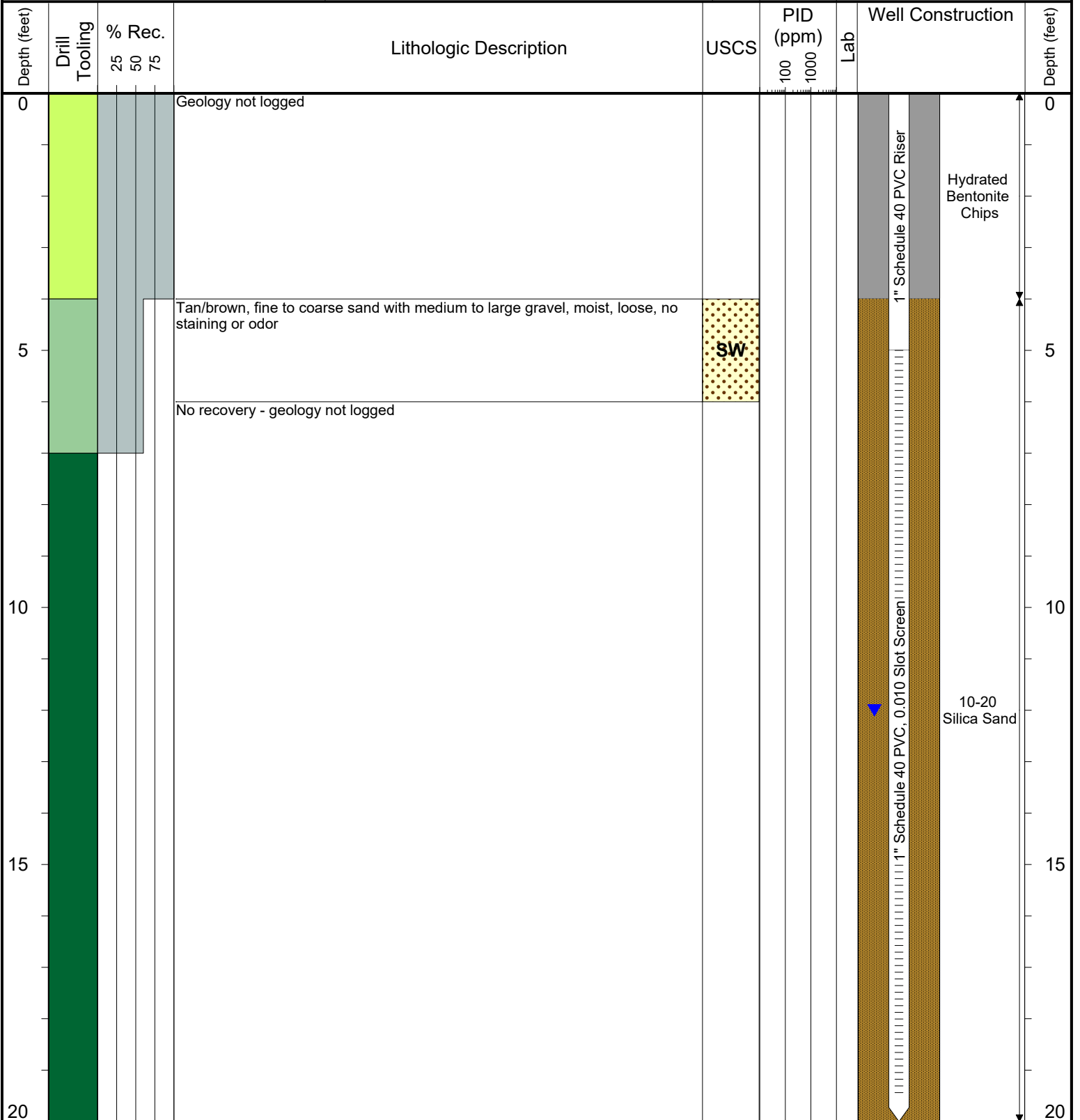
COMPLETION: Stick-up - 3.7'

NORTHING (CO STATE PLANE): 40.267563625

EASTING (CO STATE PLANE): -104.82557061

CASING ELEVATION (FT. AMSL): 4769.92

GROUND ELEVATION (FT. AMSL): 4766.19



**Drilling / Sample Method:**

- Macro-Core
- Hand Auger
- Expendable Well Tip
- Hydrovac

**Laboratory Sample Types:**

- Geotechnical Lab
- Analytical Chemistry Lab
- Geotechnical & Analytical Chemistry Lab



6899 Pecos Street, Unit C  
Denver, Colorado 80221

CLIENT: Kerr-McGee Oil & Gas Onshore, LP

LOGGED BY: Eric Siegel, P. G.

PROJECT MANAGER: Robert Cornez

DRILLING CONTRACTOR: Tasman Geosciences, Inc.

DRILLING EQUIPMENT: AMS Powerprobe 9300-SK

DRILL BIT SIZE (INCHES): 2.375"

DATE STARTED - COMPLETED: 4/26/2017

TOTAL WELL DEPTH (FT. BGS): 20

DEPTH TO WATER (FT. BGS): 12.5

HSR-Hall 64N66W31NWSW

BORING / WELL ID: BH09

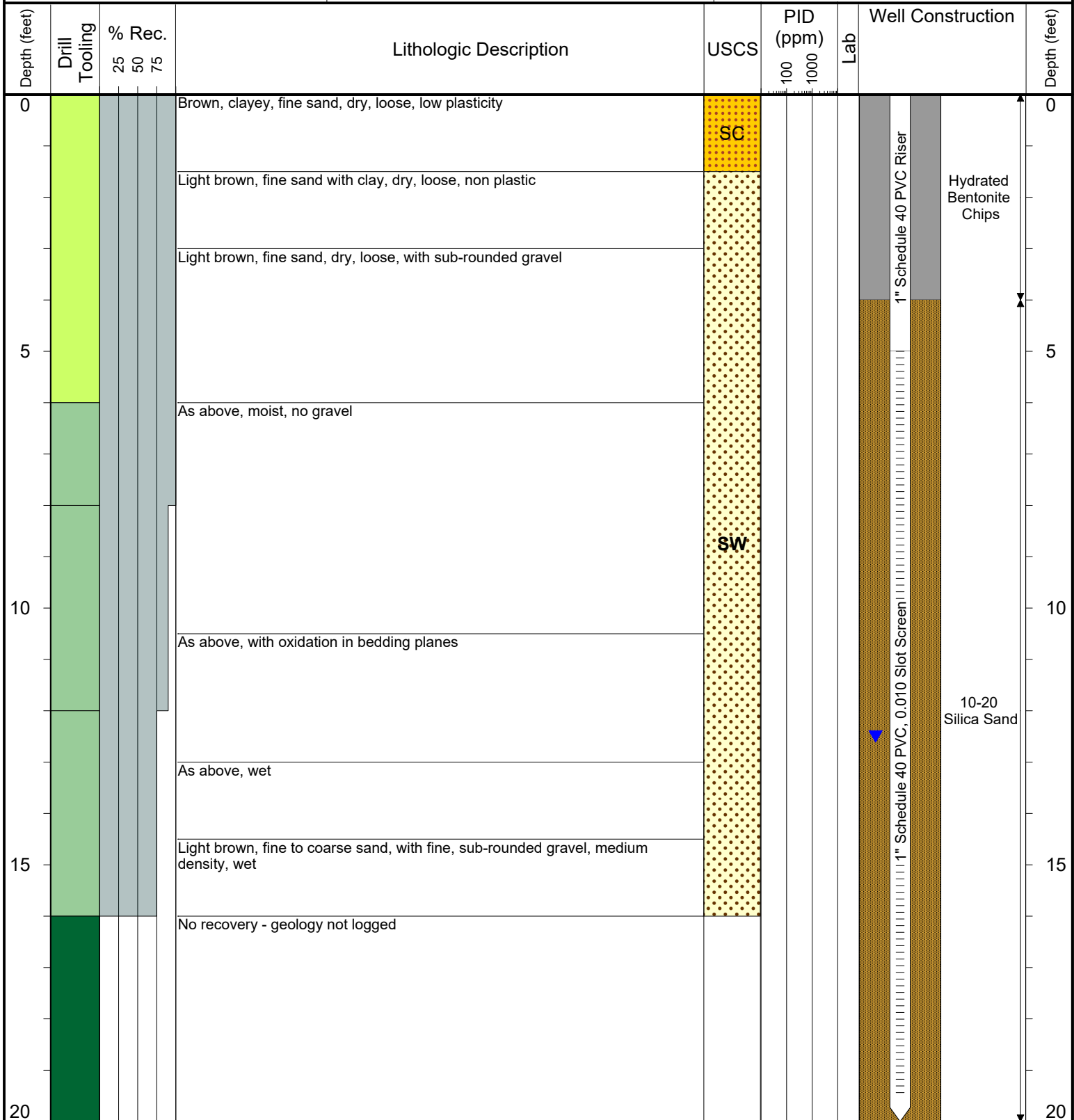
COMPLETION: Stick-up - 3.3'

NORTHING (CO STATE PLANE): 40.267597589

EASTING (CO STATE PLANE): -104.82546276

CASING ELEVATION (FT. AMSL): 4769.67

GROUND ELEVATION (FT. AMSL): 4766.27



**Drilling / Sample Method:**

- Macro-Core
- Hand Auger
- Expendable Well Tip
- Hydrovac

**Laboratory Sample Types:**

- Geotechnical Lab
- Analytical Chemistry Lab
- Geotechnical & Analytical Chemistry Lab



6899 Pecos Street, Unit C  
Denver, Colorado 80221

CLIENT: Kerr-McGee Oil & Gas Onshore, LP

LOGGED BY: Eric Siegel, P. G.

PROJECT MANAGER: Robert Cornez

DRILLING CONTRACTOR: Tasman Geosciences, Inc.

DRILLING EQUIPMENT: AMS Powerprobe 9300-SK

DRILL BIT SIZE (INCHES): 2.375"

DATE STARTED - COMPLETED: 4/26/2017

TOTAL WELL DEPTH (FT. BGS): 20

DEPTH TO WATER (FT. BGS): 13.5

HSR-Hall 64N66W31NWSW

BORING / WELL ID: BH10

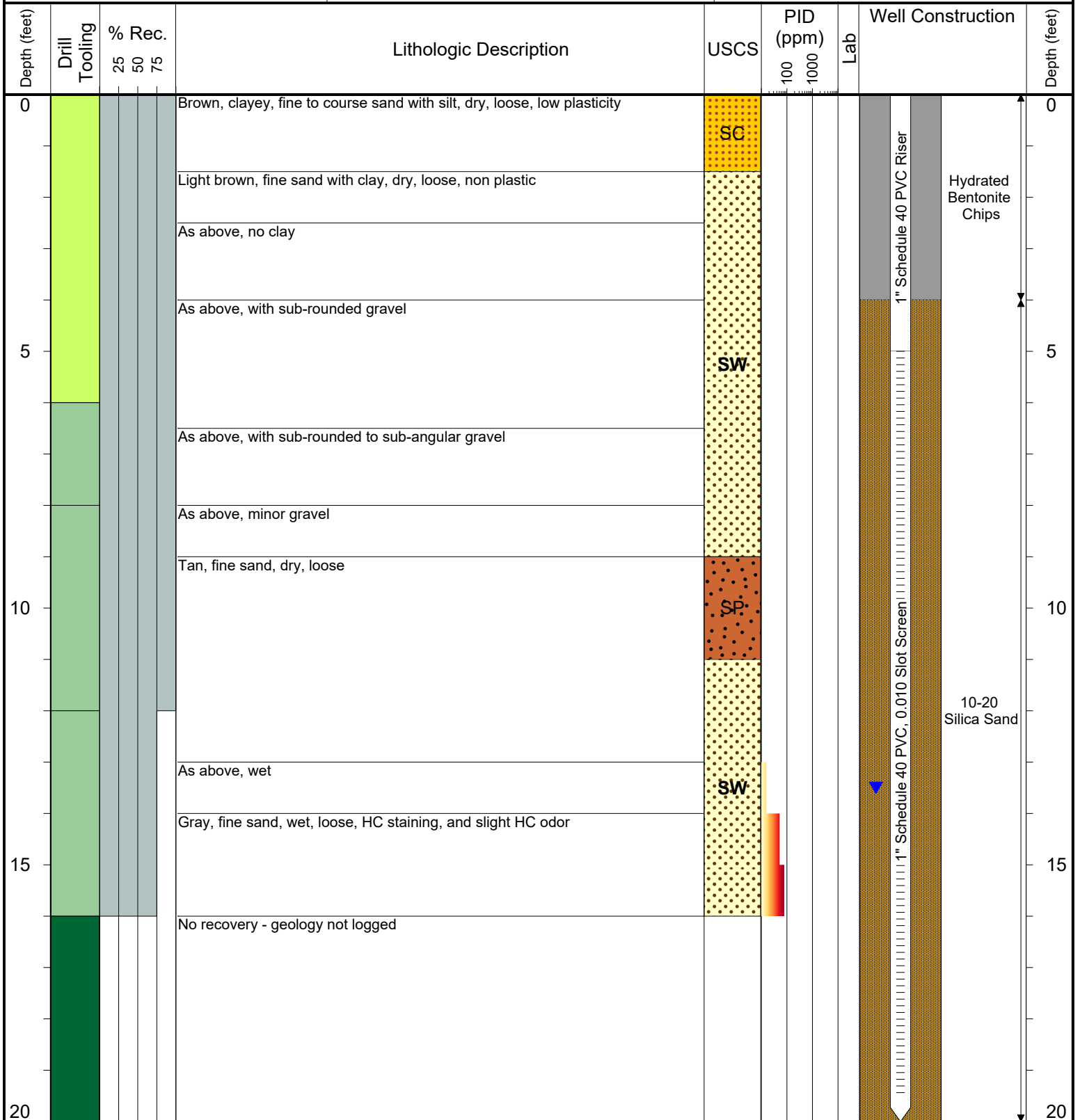
COMPLETION: Stick-up - 3.7'

NORTHING (CO STATE PLANE): 40.267610007

EASTING (CO STATE PLANE): -104.82559271

CASING ELEVATION (FT. AMSL): 4769.89

GROUND ELEVATION (FT. AMSL): 4766.18



Drilling / Sample Method:

- Macro-Core
- Hand Auger
- Expendable Well Tip
- Hydrovac

Laboratory Sample Types:

- Geotechnical Lab
- Analytical Chemistry Lab
- Geotechnical & Analytical Chemistry Lab



6899 Pecos Street, Unit C  
Denver, Colorado 80221

CLIENT: Kerr-McGee Oil & Gas Onshore, LP

LOGGED BY: Eric Siegel, P. G.

PROJECT MANAGER: Robert Cornez

DRILLING CONTRACTOR: Tasman Geosciences, Inc.

DRILLING EQUIPMENT: AMS Powerprobe 9300-SK

DRILL BIT SIZE (INCHES): 2.375"

DATE STARTED - COMPLETED: 4/26/2017

TOTAL WELL DEPTH (FT. BGS): 20

DEPTH TO WATER (FT. BGS): 12.5

HSR-Hall 64N66W31NWSW

BORING / WELL ID: BH11

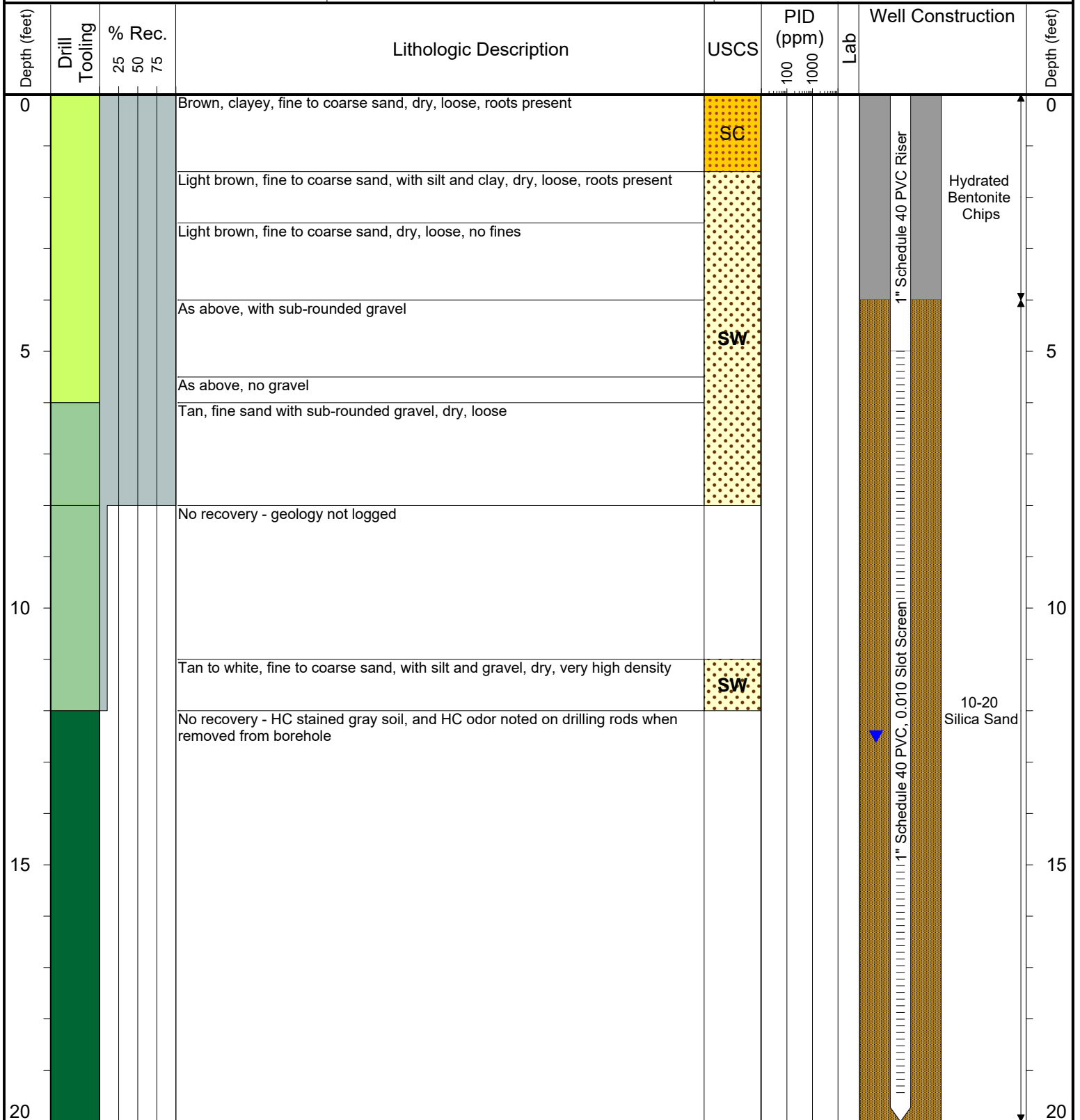
COMPLETION: Stick-up - 3.5'

NORTHING (CO STATE PLANE): 40.267536581

EASTING (CO STATE PLANE): -104.82567042

CASING ELEVATION (FT. AMSL): 4769.06

GROUND ELEVATION (FT. AMSL): 4765.52



Drilling / Sample Method:

- Macro-Core
- Hand Auger
- Expendable Well Tip
- Hydrovac

Laboratory Sample Types:

- Geotechnical Lab
- Analytical Chemistry Lab
- Geotechnical & Analytical Chemistry Lab