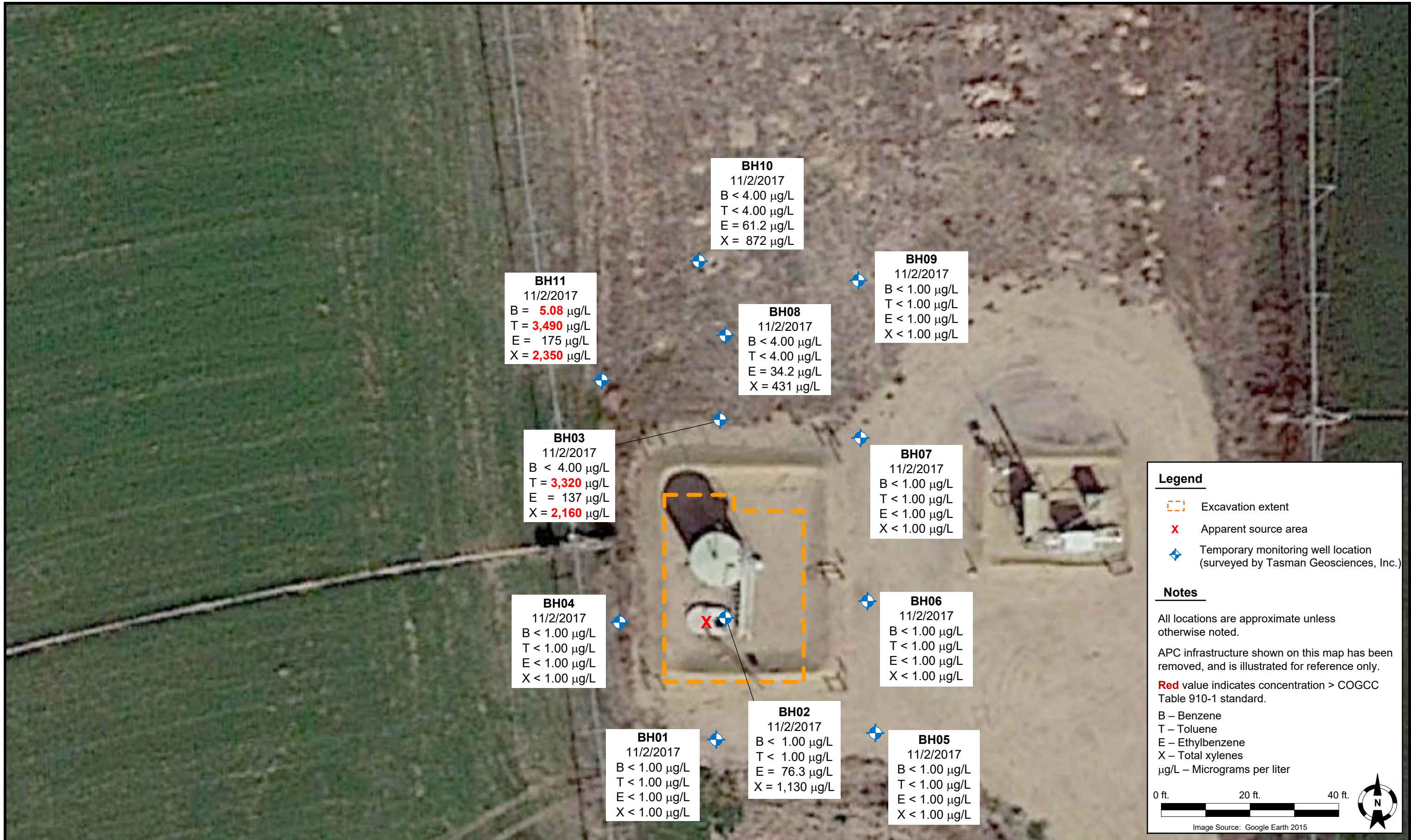


FIGURES



DATE: November 13, 2017

DESIGNED BY: M. Jahn

DRAWN BY: E. Bugarin



Kerr-McGee Oil and Gas Onshore, LP
HSR–Hall 64N66W31NWSW
 NWSW Sec. 31-T4N-R66W
 Weld County, Colorado

Groundwater Analytical
 Results Map
 (11/2/17)

FIGURE
 1