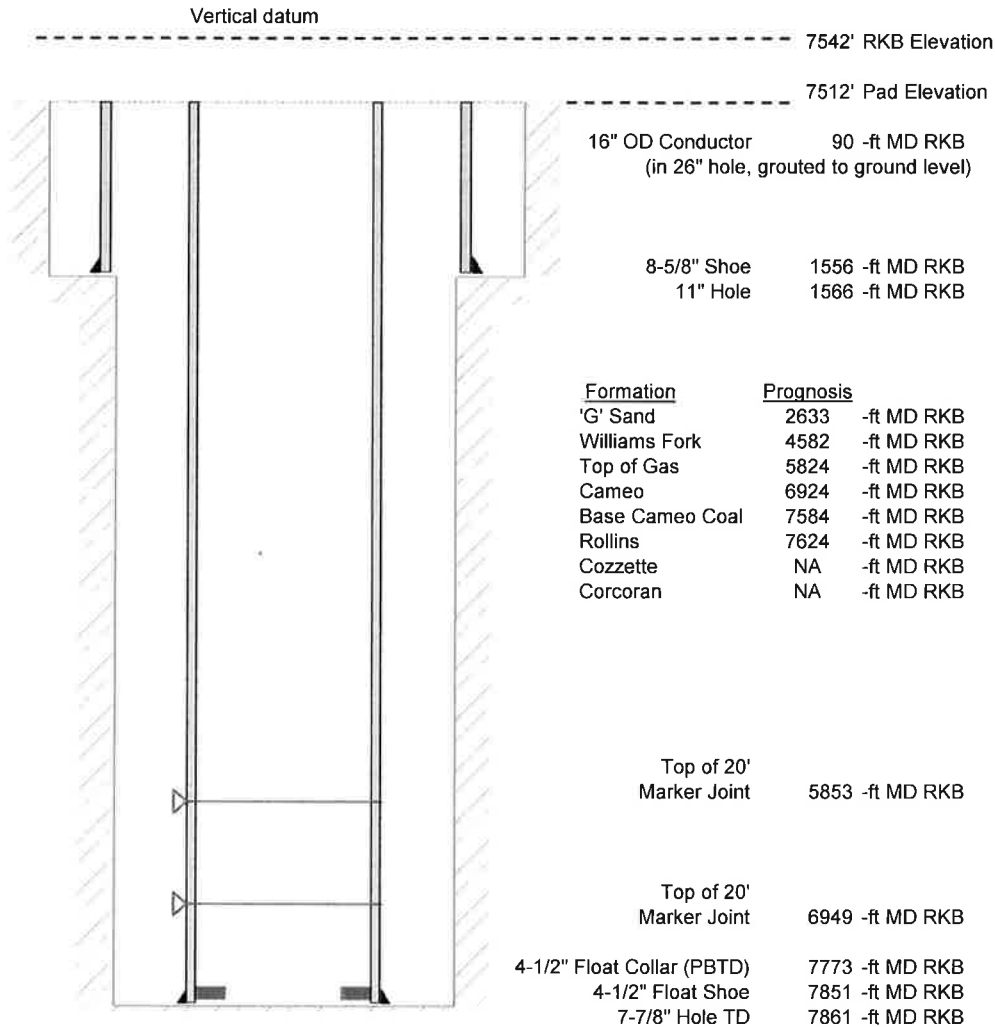


Laramie Energy, LLC
 Bruton 30-10W
 Slot A-4
 H&P 522 (30-ft KB)

API #: 05-077-10464-00
 NE/4 NW/4 S30/T9S/R93W/6th PM
 Mesa County, CO
 Date of diagram: 10/22/2017



Cementing details

8-5/8" 24# J55 STC Surface Csg	Lead	Tail
Density (ppg)	12.3	12.8
Volume (sx)	197	109
Yield (cf/sx)	2.45	2.18
Top (ft RKB)	0	785
Bottom (ft RKB)	785	1556
Returns (full or partial)	Full	Full

4-1/2" 11.6# Boly L-80 LTC Prod Csg	Lead	Tail
Density (ppg)	12.5	13.3
Volume (sx)	807	461
Yield (cf/sx)	1.94	1.73
Est Top (ft RKB)	0	4470
Est Bottom (ft RKB)	4470	7851
Returns (full or partial)	Full	Full

Displacement
8.3 ppg
120.5 bbls

Other Remarks: 36 bbls cement back on surface job. 40 bbls spacer back on production job.