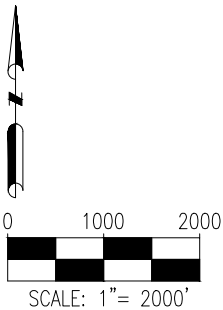
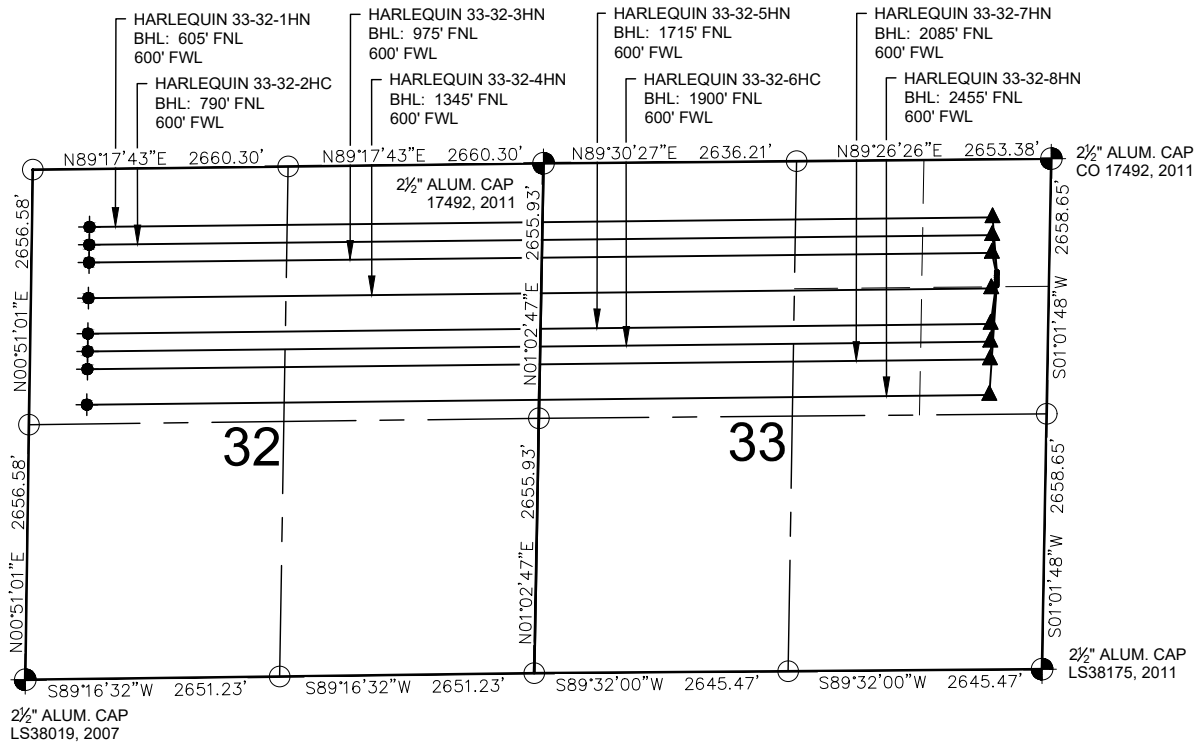


# HARLEQUIN NORTH PAD MULTI-WELL PLAN



## LEGEND

- = EXISTING MONUMENT
- = CALCULATED POSITION
- = PROPOSED WELL
- ◆ = EXISTING WELL
- ◆ = BOTTOM HOLE
- ▲ = LANDING POINT
- LP = LANDING POINT
- BHL = BOTTOM HOLE LOCATION

## NOTES:

- THIS FIELD SURVEY CONFORMS TO THE MINIMUM STANDARDS SET BY THE C.O.G.C.C., RULE NO. 215
- ALL DISTANCES AND BEARINGS SHOWN HEREON ARE GROUND VALUES AS GPS MEASURED IN THE FIELD, WITH TIES TO WELLS MEASURED PERPENDICULAR TO SECTION LINES. THIS LOW DISTORTION PROJECTION (LDP) IS BASED ON THE NORTH AMERICAN DATUM OF 1983, U.S. SURVEY FOOT WITH A LATITUDE ORIGIN OF 40.655085°N, A CENTRAL MERIDIAN LONGITUDE OF 104.086861°W, AND A SCALE FACTOR ON THE CENTRAL MERIDIAN OF 1.000232 (EXACT). THE LDP BASIS OF BEARINGS IS GEODETIC NORTH.
- FIELD VERIFICATION OF MONUMENTS COMPLETED WITHIN 1 YEAR OF SIGNATURE DATE.

## NOTES:

- HARLEQUIN 33-32-1HN TO BE AT 1172' FNL & 546' FEL. BOTTOM HOLE AT 605' FNL & 600' FWL, SEC. 32.
- HARLEQUIN 33-32-2HC TO BE AT 1192' FNL & 546' FEL. BOTTOM HOLE AT 790' FNL & 600' FWL, SEC. 32.
- HARLEQUIN 33-32-3HN TO BE AT 1212' FNL & 545' FEL. BOTTOM HOLE AT 975' FNL & 600' FWL, SEC. 32.
- HARLEQUIN 33-32-4HN TO BE AT 1232' FNL & 545' FEL. BOTTOM HOLE AT 1345' FNL & 600' FWL, SEC. 32.
- HARLEQUIN 33-32-5HN TO BE AT 1252' FNL & 545' FEL. BOTTOM HOLE AT 1715' FNL & 600' FWL, SEC. 32.
- HARLEQUIN 33-32-6HC TO BE AT 1272' FNL & 544' FEL. BOTTOM HOLE AT 1900' FNL & 600' FWL, SEC. 32.
- HARLEQUIN 33-32-7HN TO BE AT 1292' FNL & 544' FEL. BOTTOM HOLE AT 2085' FNL & 600' FWL, SEC. 32.
- HARLEQUIN 33-32-8HN TO BE AT 1312' FNL & 544' FEL. BOTTOM HOLE AT 2455' FNL & 600' FWL, SEC. 32.