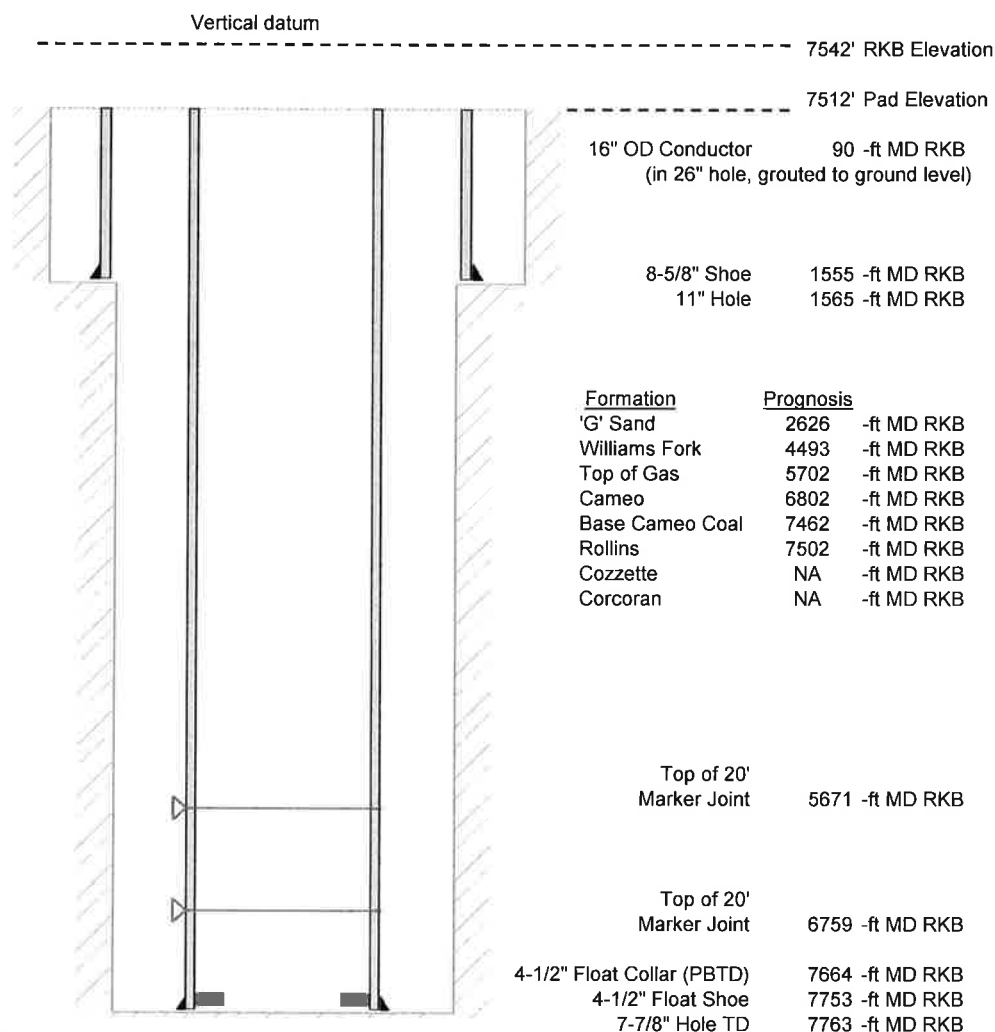


Laramie Energy, LLC
 Bruton 30-03W
 Slot B-9
 H&P 522 (30-ft KB)

API # : 05-077-10446-00
 NE/4 NW/4 S30/T9S/R93W/6th PM
 Mesa County, CO
 Date of diagram : 9/5/2017



Cementing details

8-5/8" 24# J55 STC Surface Csg	Lead	Tail
Density (ppg)	12.3	12.8
Volume (sx)	197	
Yield (cf/sx)	2.45	2.18
Top (ft RKB)	0	
Bottom (ft RKB)	1030	1555
Returns (full or partial)	Full	Full

4-1/2" 11.6# Nexteel-80 LTC Prod Csg	Lead	Tail
Density (ppg)	12.5	13.3
Volume (sx)	784	461
Yield (cf/sx)	1.94	1.73
Est Top (ft RKB)	0	
Est Bottom (ft RKB)	5710	7753
Returns (full or partial)	Full	Full

Displacement
8.3 ppg
bbls

Other Remarks : 30 bbls cement to surface on surface job, no spacer to surface on production job.