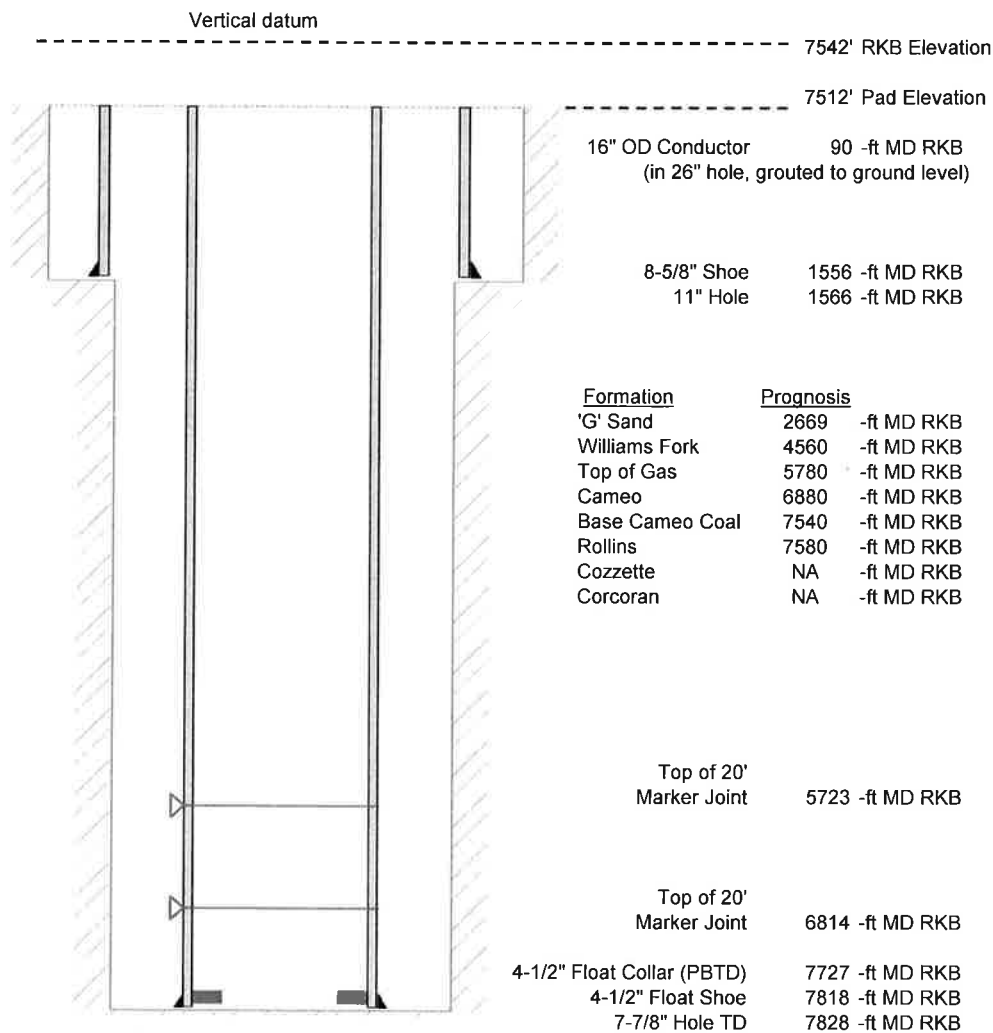


Laramie Energy, LLC  
 Bruton 30-01W  
 Slot B-10  
 H&P 522 (30-ft KB)

API # : 05-077-10454-00  
 NE/4 NW/4 S30/T9S/R93W/6th PM  
 Mesa County, CO  
 Date of diagram : 8/31/2017



#### Cementing details

8-5/8" 24# J55 STC Surface Csg	Lead	Tail
Density (ppg)	12.3	12.8
Volume (sx)	197	109
Yield (cf/sx)	2.45	2.18
Top (ft RKB)	0	585
Bottom (ft RKB)	585	1556
Returns (full or partial)	Full	Full

4-1/2" 11.6# Nexteel-80 LTC Prod Csg	Lead	Tail
Density (ppg)	12.5	13.3
Volume (sx)	799	461
Yield (cf/sx)	1.94	1.73
Est Top (ft RKB)	1030	
Est Bottom (ft RKB)	5518	7818
Returns (full or partial)	Full	Full

Displacement
8.3 ppg
bbls

Other Remarks : 30 bbls cement back on surface job. No spacer to surface on production job.