

Company SHAKESPEARE OIL COMPANY, INC.		Well H-C #1-7 "A"		Field WILDCAT		County BACA		State COLORADO	
Location: 2035 F&L 1591 P&L		APF # : 05-09-05890-0000		Other Services CDL/CL/PE		DIL			
Permanent Down SEC 7 TWP 33S RGE 11W		Log Measured From MELLY BUSHING 1" A.G.L		Elevation K 3713 D 3714 G.L 3732		Date 12/22/17			
From Number TWO		Log Number 4842		To Log Interval 4842		To Log Interval 3790			
Casing Driver 8.58 @ 1352'		Casing Log/Log 1352'		Casing Log/Log 1352'		Casing Log/Log 1352'			
To Log Interval 3790		To Log Interval 1352'		To Log Interval 1352'		To Log Interval 1352'			
Density / Viscosity 9.2/5.8		pH / Fluid Loss 9.2/5.8		Source of Sample FLUO LINE		Run @ Mass Temp 2.38 @ 60°F		Run @ Mass Temp 2.38 @ 60°F	
Source of Run / Run MELLY BUSHING		Run @ BHT 51 @ 124°F		Time Circulation Stopped 3:15 PM		Time Log/Log Stopped 3:15 PM			
Location HAYS, KANSAS		Equipment Number 922338		Recorded By JEFF LIEBBERG		Unvised By TOBY ECK			

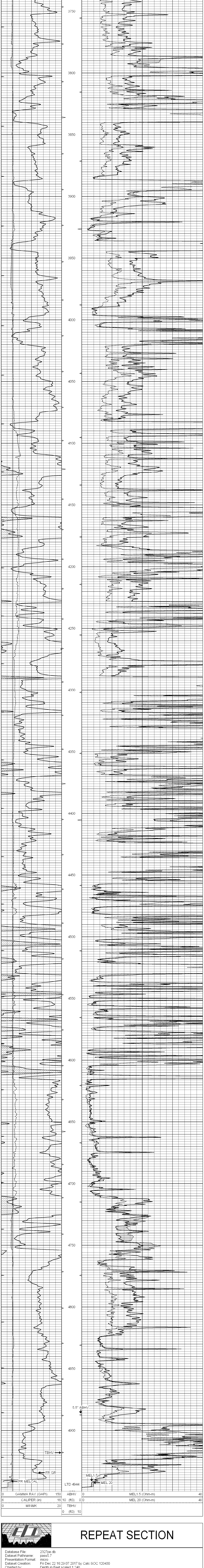
All interpretations are opinions based on inferences from electrical or other measurements and we cannot and do not guarantee the accuracy or correctness of any interpretation, and we shall not be liable or responsible for any loss, costs, damages, or expenses incurred or sustained by anyone resulting from any interpretation made by any of our officers, agents or employees. These interpretations are also subject to our general terms and conditions set out in our current Price Schedule.

Comments

THANK YOU FOR USING ELI WIRELINE HAYS, KANSAS (785) 628-6395  
DIRECTIONS  
ELKHARDT, KS., 9N. ON HWY 27 TO HWY 51, 9W., TO "RD. 56", 3N., 2W. ON TRAIL S & W INTO

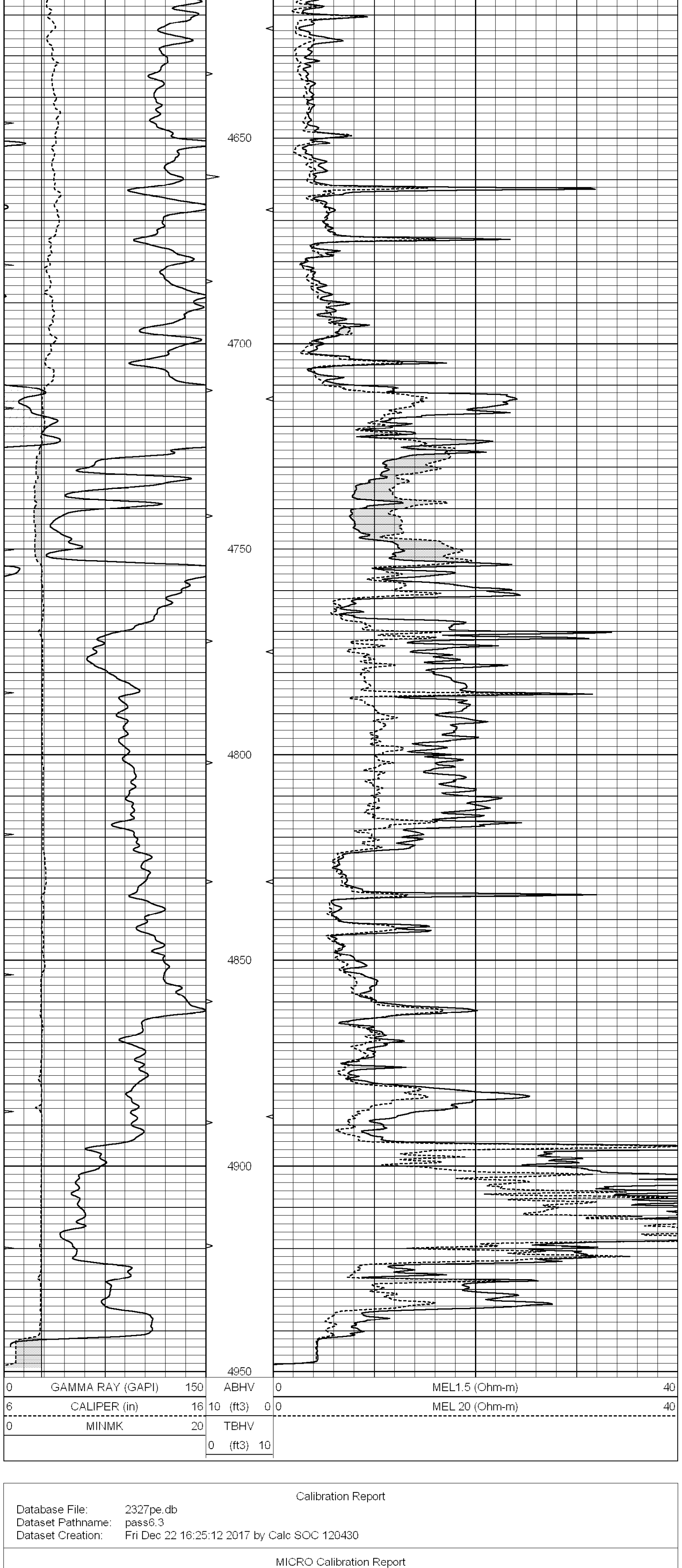
## MAIN SECTION

Database File: 2327pe.db  
Dataset Pathname: pass5.3  
Presentation Format: micro  
Dataset Creation: Fri Dec 22 16:25:12 2017 by Calc SOC 120430  
Charted by:



## REPEAT SECTION

Database File: 2327pe.db  
Dataset Pathname: pass5.7  
Presentation Format: micro  
Dataset Creation: Fri Dec 22 16:29:07 2017 by Calc SOC 120430  
Charted by:



Calibration Report

Database File: 2327pe.db  
Dataset Pathname: pass5.3  
Dataset Creation: Fri Dec 22 16:25:12 2017 by Calc SOC 120430

MICRO Calibration Report

Serial Number: 070512  
Tool Model: OPEN\_GR  
Performed: Tue Dec 12 05:17:36 2017

Caliper Calibration: Gain=2.826 Offset=5.718

References Readings Low Cal 7.100 High Cal 15.000  
0.469 3.265

1.5" Calibration: Gain=40.000 Offset=-2.300

References Readings Low Cal 0.000 High Cal 20.000  
0.002 1.239

2" Calibration: Gain=45.000 Offset=-2.000

References Readings Low Cal 0.000 High Cal 20.000  
0.003 1.075

Gamma Ray Calibration Report

Serial Number: 070559  
Tool Model: OPEN\_GR  
Performed: Tue Dec 12 22:56:40 2017

Calibrator Value: 1.0 GAPI

Background Reading: 0.0 cps

Calibrator Reading: 1.0 cps

Sensitivity: 0.2600 GAPI/cps